



**Dave Yost**  
Ohio Auditor of State

# SNAP Audit in brief

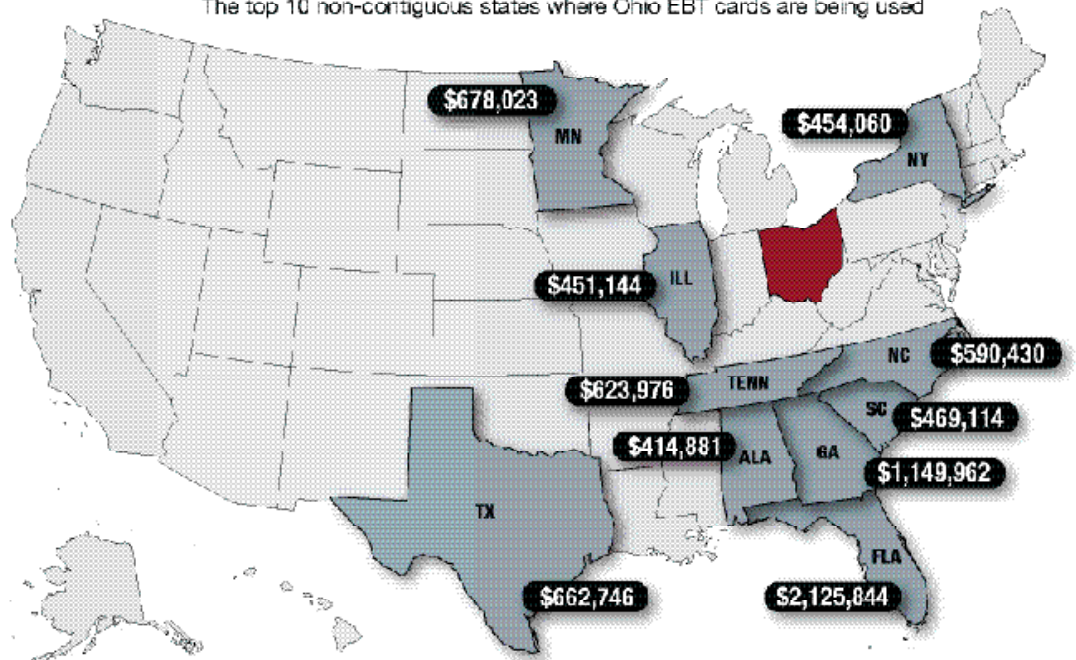
On June 28, 2016, Auditor Yost released the second audit of Ohio’s \$2.5 billion Supplemental Nutrition Assistance Program (SNAP), also known as the food stamp program. The audit examined spending during the first six months of 2015 to identify structural program weaknesses but also found some instances of potential fraud.

Among the findings:

- Cases where deceased individuals received benefits more than a year after their death, but data showed their cards were still in use.
- 173 recipients with card balances exceeding \$5,000, including one balance of \$20,610. Those recipients collectively had balances worth more than \$1.2 million.
- Unusual card activity at neighborhood corner stores where an entire month’s benefits were spent in a single transaction.
- More than \$28.5 million spent in “even dollar” transactions, amounts that are not typical and are indicators of fraud.
- Multiple transactions worth hundreds of dollars that occurred within minutes of each other.

## Where is Ohio money going?

The top 10 non-contiguous states where Ohio EBT cards are being used



To read the full press release go to [ohioauditor.gov/news/pressreleases](http://ohioauditor.gov/news/pressreleases)

- More than \$28.7 million in SNAP funds spent by Ohioans in states as far away as Texas, Florida and Minnesota.

Auditor Yost testified before Congress in July 2016, urging federal lawmakers to consid-

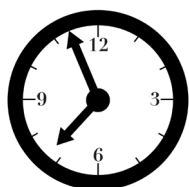
er an alternative approach to one-size-fits-all by giving states the ability to be innovative so the most efficient, fraud-resistant method to provide the needy with food assistance can be developed.

# Odd transactions

In one instance, a SNAP recipient's EBT card was used six times in an hour at two different retailers:



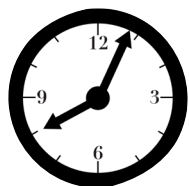
## One-hour transactions



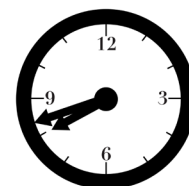
**7:57 p.m.**  
**\$201**



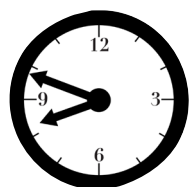
**8:01 p.m.**  
**\$189**



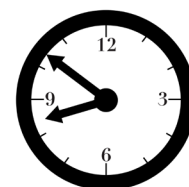
**8:04 p.m.**  
**\$269**



**8:42 p.m.**  
**\$262**



**8:49 p.m.**  
**\$262**



**8:52 p.m.**  
**\$372**

In another, a recipient's EBT card was used on the same day each month, at two times, for the same dollar amount:

## Unusual card activity



**12:00 a.m.**  
**\$575**  
**12:04 a.m.**  
**\$196**



**12:01 a.m.**  
**\$575**  
**12:03 a.m.**  
**\$196**



**12:01 a.m.**  
**\$575**  
**12:02 a.m.**  
**\$196**



**12:00 a.m.**  
**\$575**  
**12:02 a.m.**  
**\$196**



**12:00 a.m.**  
**\$575**  
**12:03 a.m.**  
**\$196**



**12:01 a.m.**  
**\$575**  
**12:04 a.m.**  
**\$196**

