

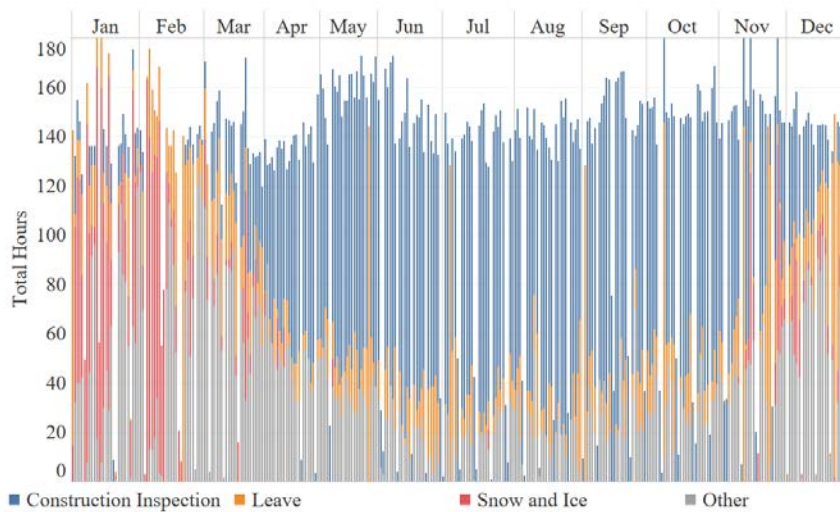
## Appendix B: Construction Inspection

Each District within ODOT was analyzed separately in order to identify potential cost savings related to the staffing of HT3C/Ms and the use of consultant inspectors. On the following pages are the charts showing what activities HT3C/Ms were assigned to in 2018 by District as well as the opportunity within each district to replace consultant hours with internal staff hours.

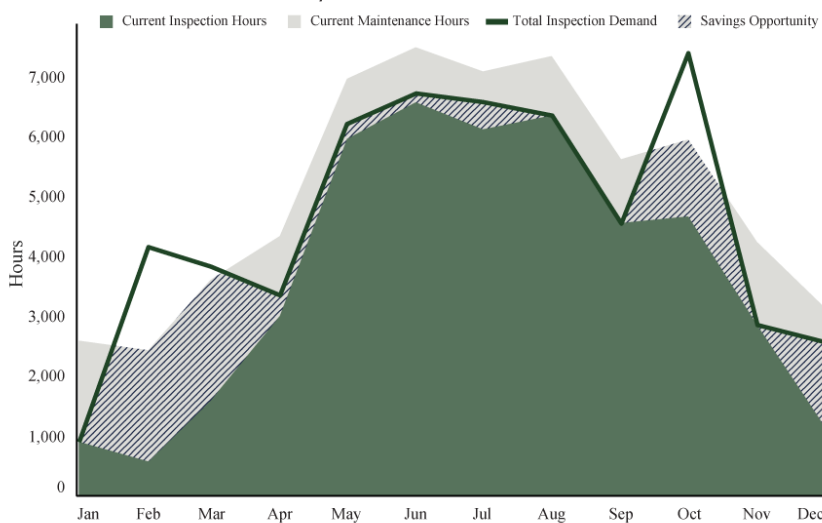
## District 1

District 1 is located in Northwest Ohio. It includes the following counties: Defiance, Paulding, Putnam, Van Wert, Allen Hancock, Hardin, and Wyandot counties. There is a sizable number of HT3C/M hours spent on snow and ice removal in the winter. ODOT HTC/M almost fully met the Total Inspection Demand in the summer months.

### District 1 HT3C/M ACTIVITY 2018



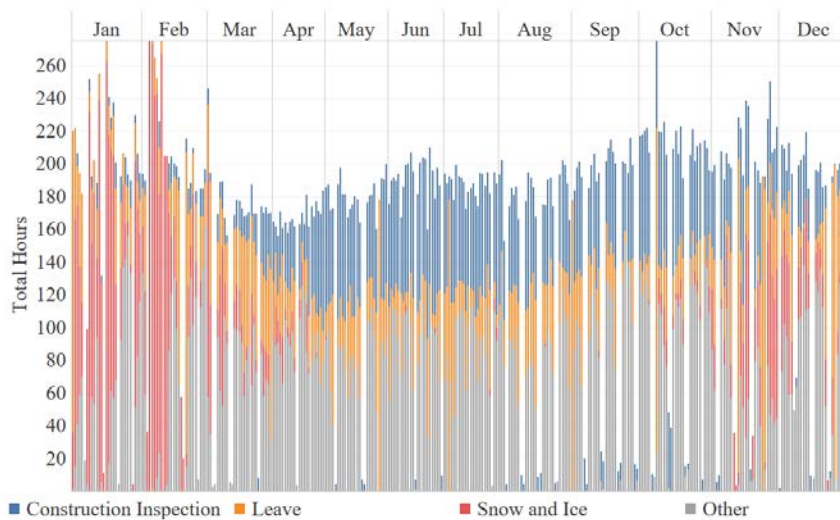
### District 1 HTC/M Activity



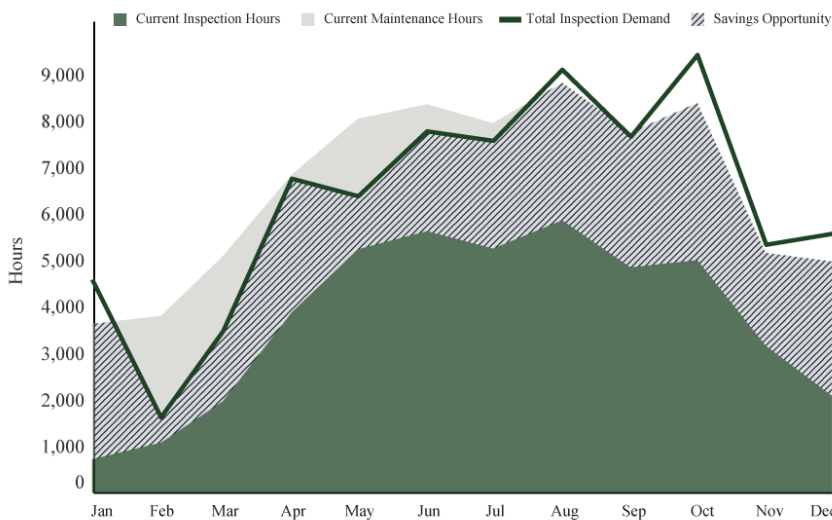
## District 2

District 2 is located in the Northwest corner of Ohio. It includes the following counties: Williams, Fulton, Henry, Lucas, Ottawa, Sandusky, and Seneca. There is a large number of HT3C/M hours spent on snow and ice removal due to the lake-effect weather. The district relied on consultants to meet the Total Inspection Demand throughout the year.

### District 2 HT3C/M ACTIVITY 2018



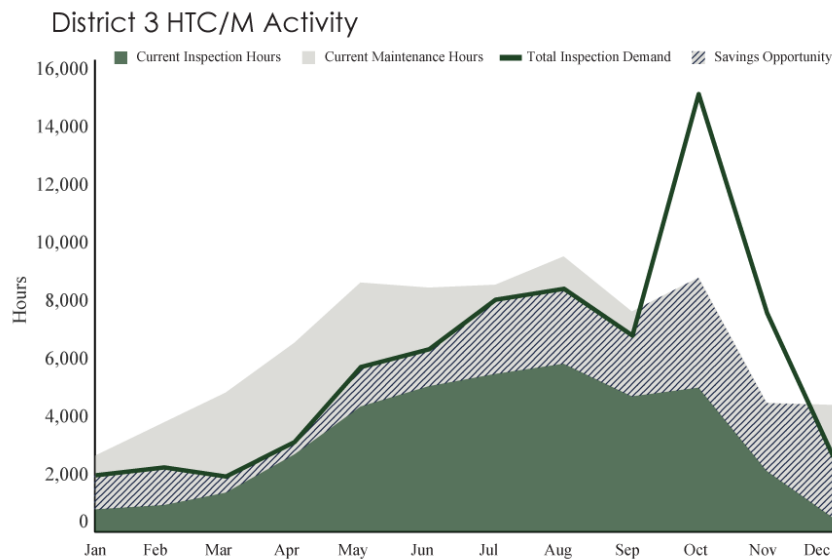
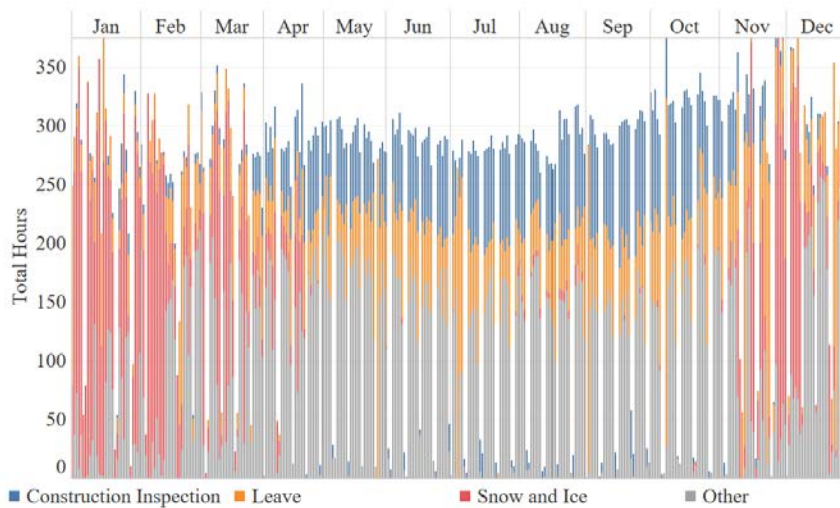
### District 2 HTC/M Activity



### District 3

District 3 is located in Northcentral Ohio. It includes the following counties: Erie, Lorain, Huron, Crawford, Richland, Ashland, Medina, and Wayne. Snow and ice removal is dominant in the winter months due to lake-effect weather. The district relied on consultants to meet the Total Inspection Demand throughout the year.

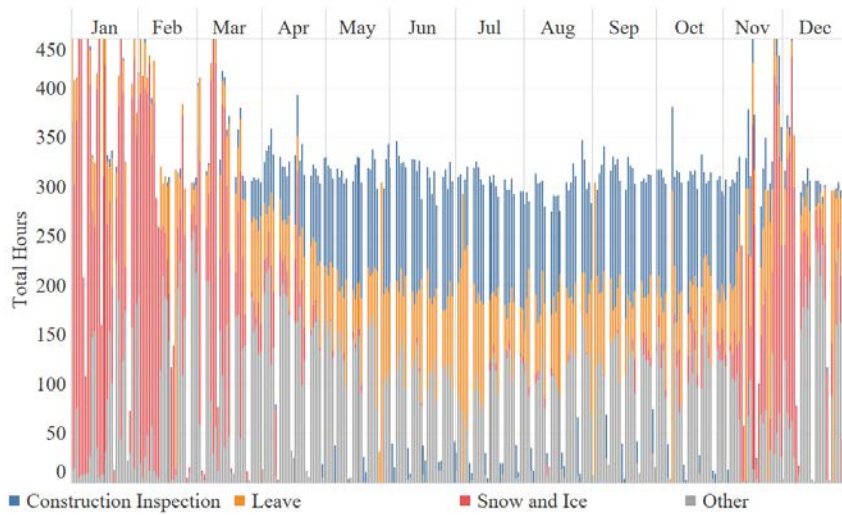
### District 3 HT3C/M ACTIVITY 2018



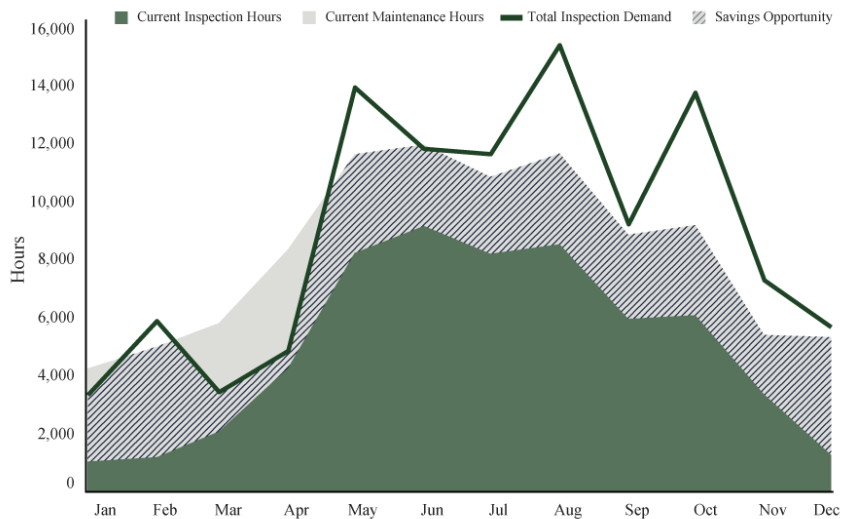
## District 4

District 4 is located in Northeast Ohio. It includes the following counties: Ashtabula, Trumbull, Portage, Summit, Mahoning, and Stark. There was a high number of HT3C/M hours spent on snow and ice removal in the winter months due to inclement weather. District 4 relied on consultants to meet the Total Inspection Demand throughout the year.

### District 4 HT3C/M ACTIVITY 2018



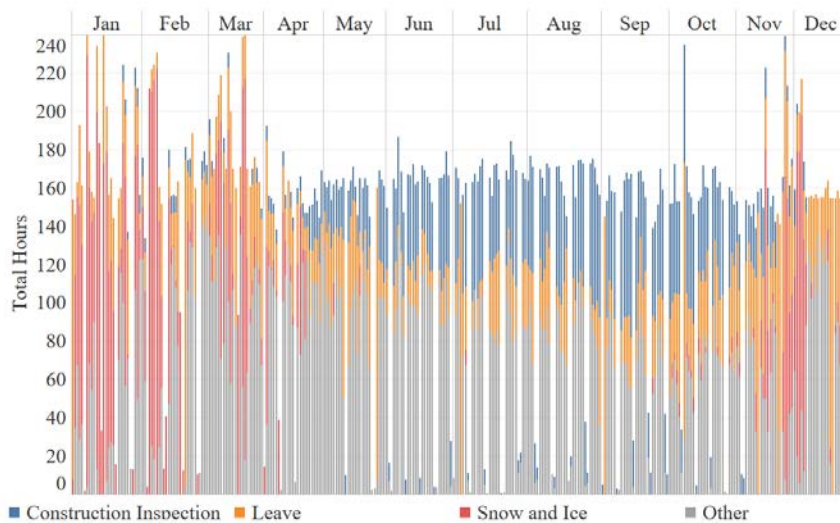
### District 4 HTC/M Activity



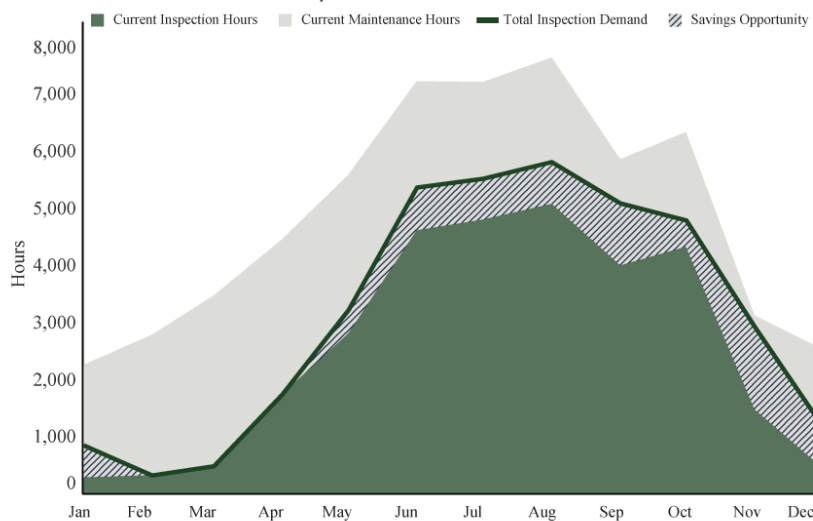
## District 5

District 5 is located in East Central Ohio. It includes the following Counties: Knox, Coshocton, Licking, Guernsey, Muskingum, Perry, and Fairfield. They experienced relatively moderate snowy weather based on the HT3C/M hours they spent in the winter months. District 5 almost fully met the Total Inspection Demand using HTC/Ms throughout the year.

### District 5 HT3C/M ACTIVITY 2018



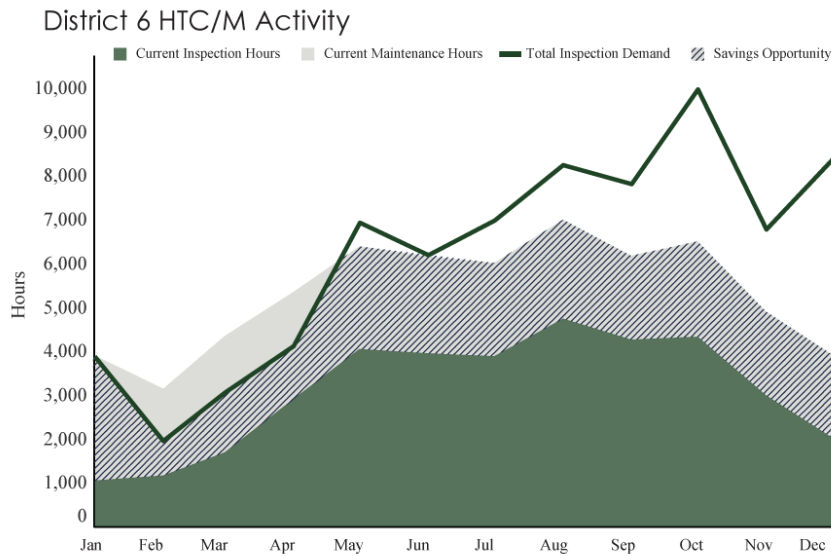
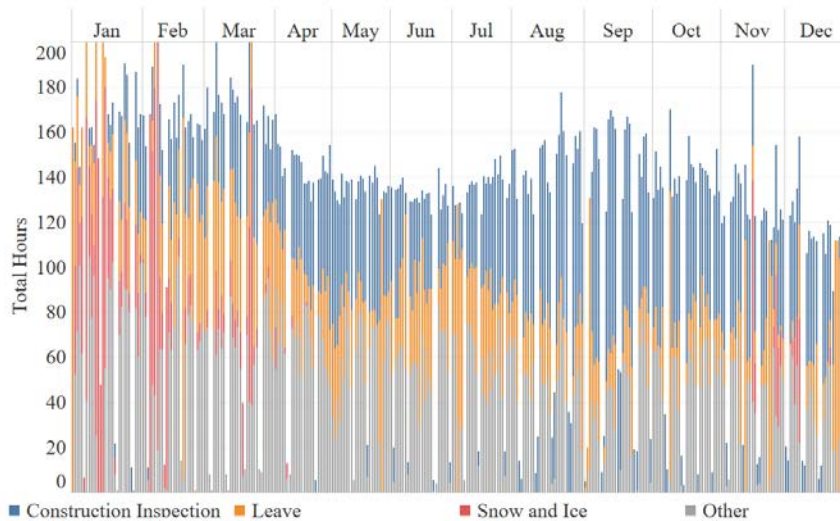
### District 5 HTC/M Activity



## District 6

District 6 is located in West Central Ohio. It includes the following counties: Marion, Morrow, Union, Delaware, Franklin, Madison, Fayette, and Pickaway. District 6 experienced moderate snow and ice during the winter months. They relied on consultants to meet the Total Inspection Demand throughout the year.

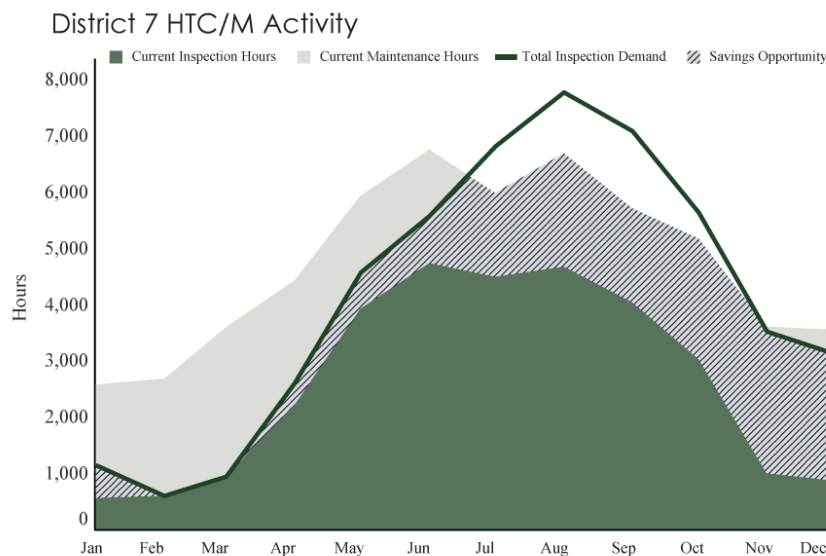
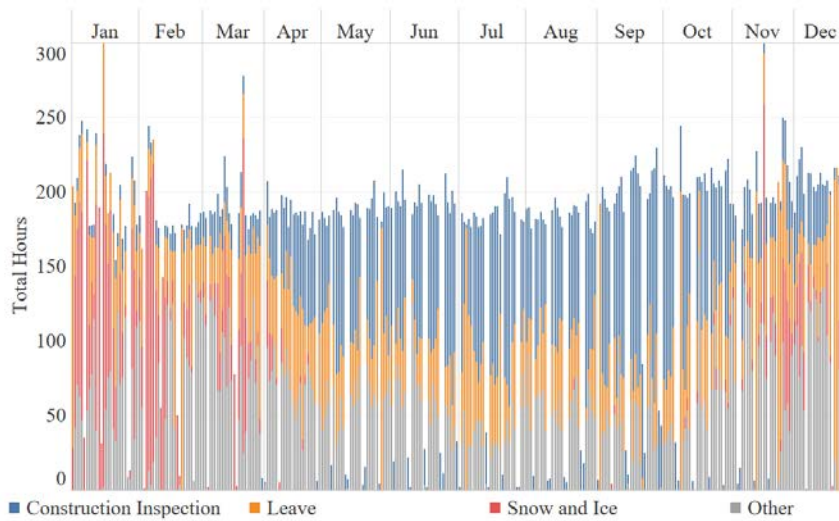
### District 6 HT3C/M ACTIVITY 2018



## District 7

District 7 is located in Western Ohio. It includes the following counties: Mercer, Auglaize, Logan, Shelby, Darke, Miami, Champaign, Clark, and Montgomery. The district experienced moderate snow and ice during the winter months. District 7 HTC/M met, or almost met the Total Inspection Demand during the first half of the year, and relied on consultants during the last half of the year.

### District 7 HT3C/M ACTIVITY 2018

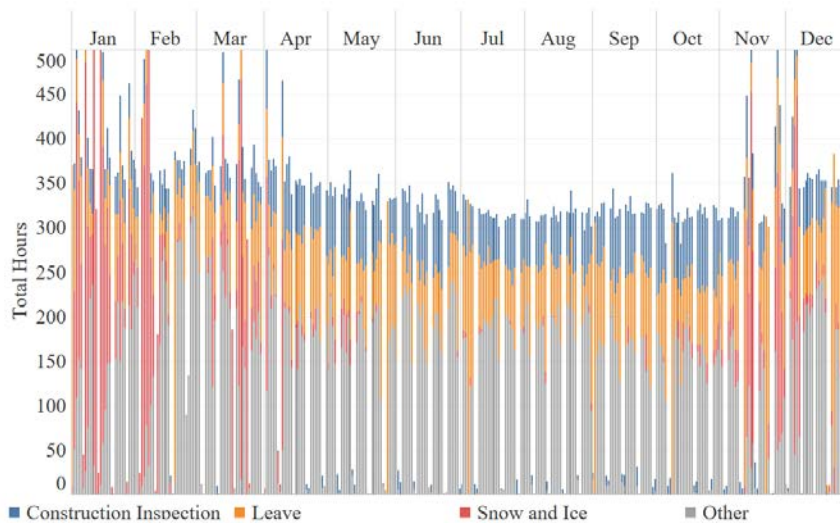




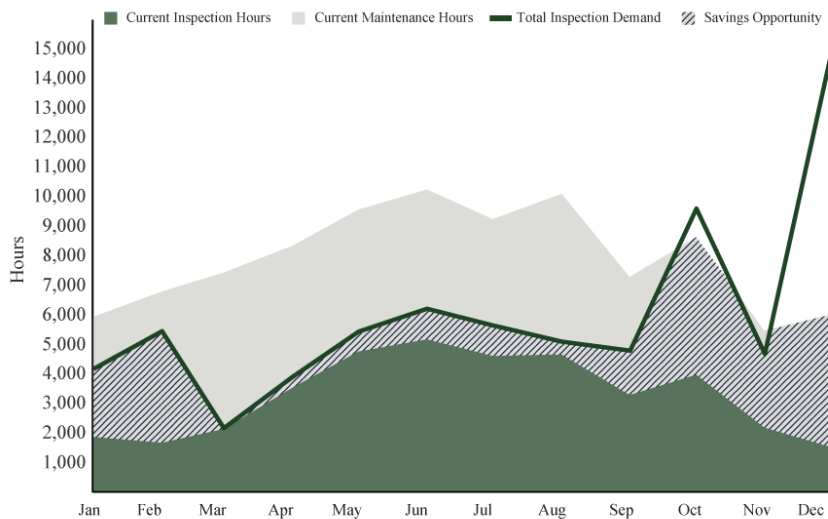
## District 8

District 8 is located in Southwestern Ohio. It includes the following counties: Preble, Green, Butler, Warren, Clinton, Hamilton, and Clermont. Based on the HT3C/M hours in the winter months, the district experienced moderate snow and ice. District 8 HTC/M almost fully met the Total Inspection demand during the spring and summer.

### District 8 HT3C/M ACTIVITY 2018



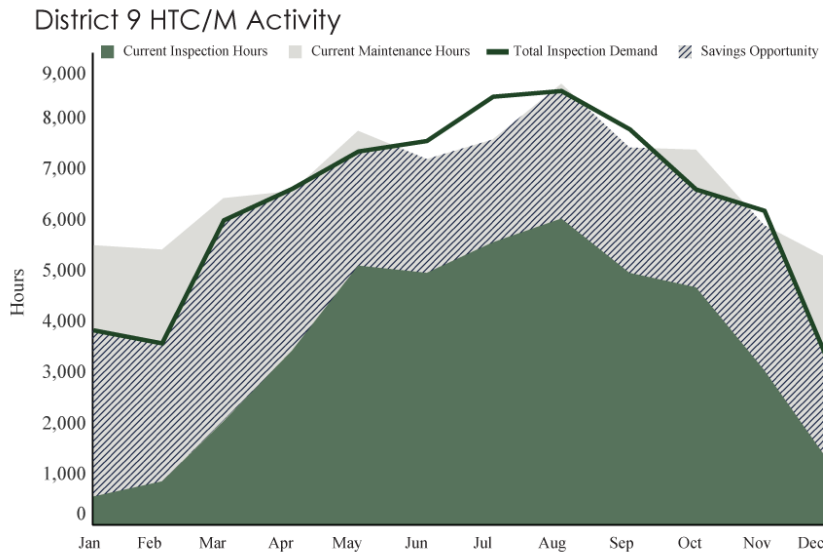
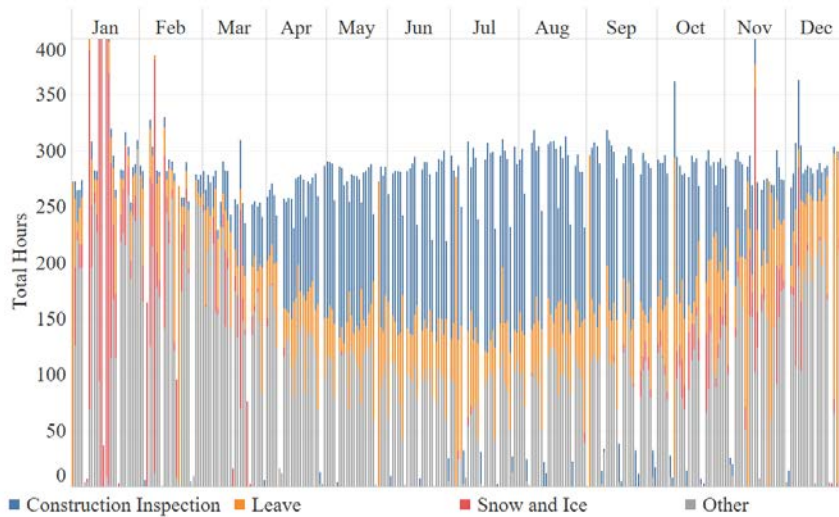
### District 8 HTC/M Activity



## District 9

District 9 is located in South Central Ohio. It includes the following counties: Ross, Highland, Pike, Jackson, Brown, Adams, Scioto, and Lawrence. The district's HT3C/M hours logged as snow and ice removal in the winter months was relatively low. District 9 relied on consultants to meet the Total Inspection Demand throughout the year.

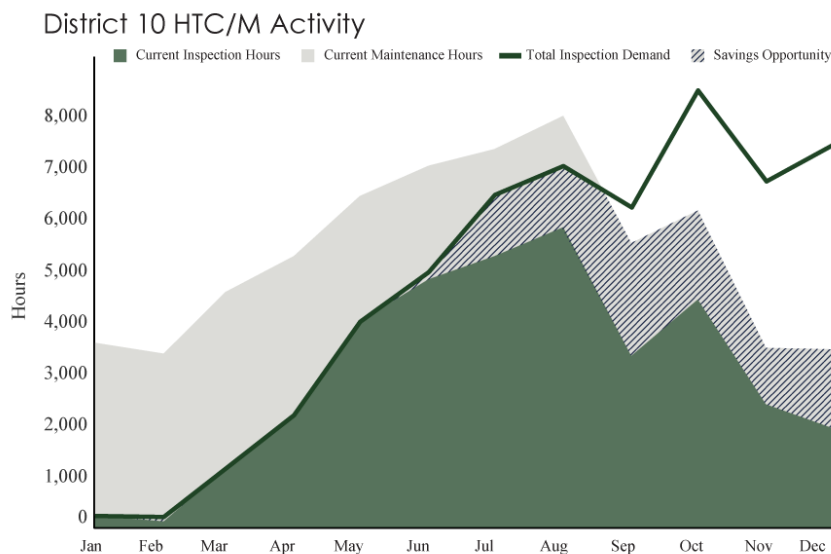
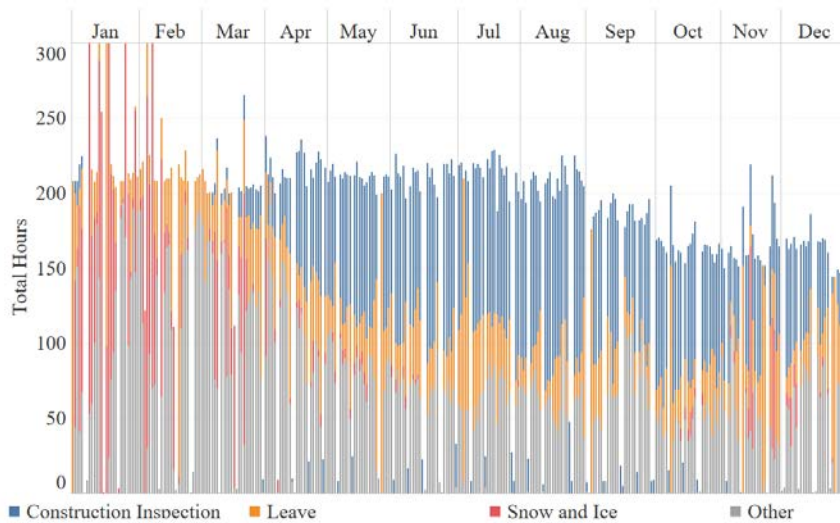
### District 9 HT3C/M ACTIVITY 2018



## District 10

District 10 is located in Southeastern Ohio. It includes the following counties: Monroe Noble, Washington, Morgan, Athens, Hocking, Vinton, Meigs, and Gallia. There was moderate snow and ice experienced in this district according to the HT3C/M snow and ice removal logged in this district. District 10 met or almost met the Total Inspection Demand using HTC/Ms during the first half of the year.

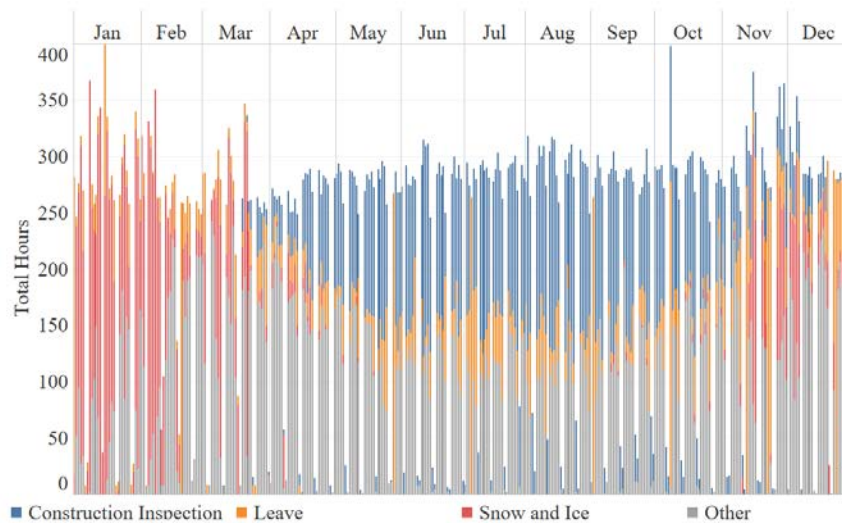
### District 10 HT3C/M ACTIVITY 2018



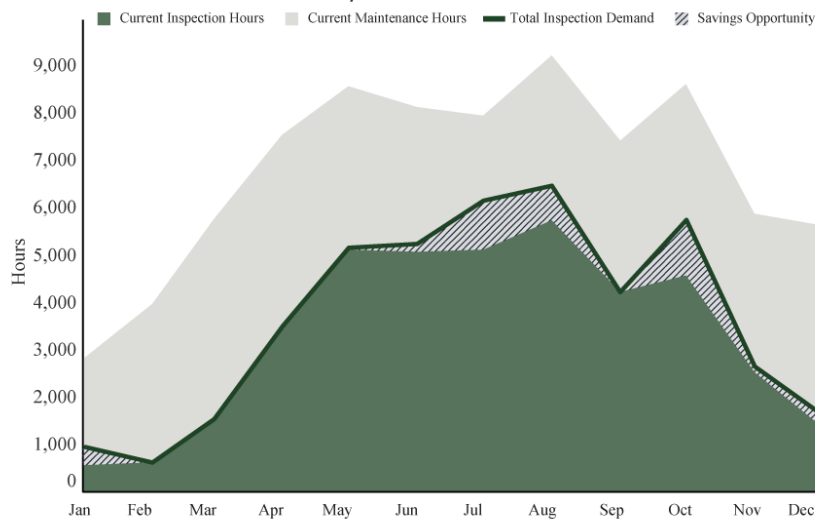
## District 11

District 11 is located in Eastern Ohio. It includes the following counties: Columbiana, Carroll, Holmes, Tuscarawas, Harrison, Jefferson, and Belmont. There were moderate HT3C/M hours logged as snow and ice removal during the winter season. District 11 met or almost fully met the Total Inspection Demand in each month using HTC/Ms.

### District 11 HT3C/M ACTIVITY 2018



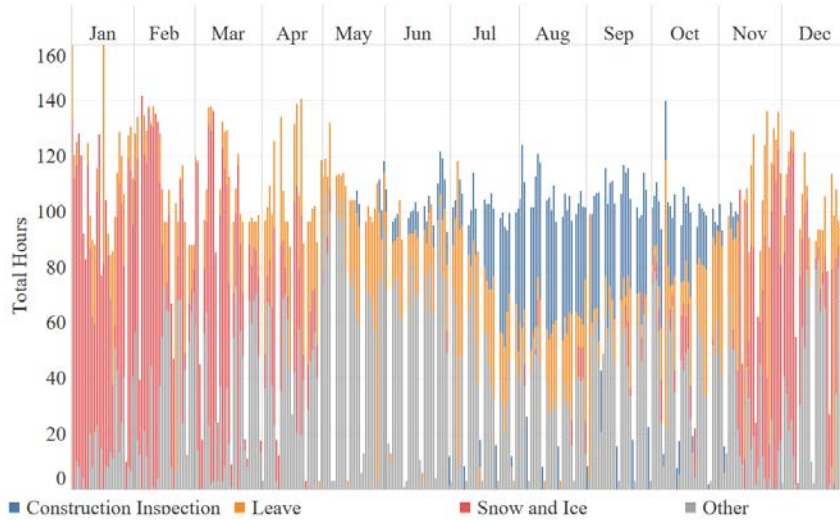
### District 11 HTC/M Activity



## District 12

District 12 is located in Northeastern Ohio. It includes the following counties: Lake, Geauga, and Cuyahoga. The district experienced a lot of snow and ice from November to March. District 12 relied on consultants throughout the year to meet the Total Inspection Demand.

### District 12 HT3C/M ACTIVITY 2018



### District 12 HTC/M Activity

