



Dave Yost • Auditor of State

WORTHINGTON LIBRARIES
FRANKLIN COUNTY

DECEMBER 31, 2017

TABLE OF CONTENTS

TITLE	PAGE
Independent Auditor's Report on Internal Control Over Financial Reporting and on Compliance and Other Matters Required by <i>Government Auditing Standards</i>	1

THIS PAGE INTENTIONALLY LEFT BLANK



Dave Yost • Auditor of State

INDEPENDENT AUDITOR'S REPORT ON INTERNAL CONTROL OVER FINANCIAL REPORTING AND ON COMPLIANCE AND OTHER MATTERS REQUIRED BY *GOVERNMENT AUDITING STANDARDS*

Worthington Libraries
Franklin County
820 High Street
Worthington, Ohio 43085

To the Board of Trustees:

We have audited, in accordance with auditing standards generally accepted in the United States and the Comptroller General of the United States' *Government Auditing Standards*, the financial statements of the governmental activities, the major fund, and the aggregate remaining fund information of the Worthington Libraries, Franklin County, (the Library) as of and for the year ended December 31, 2017, and the related notes to the financial statements, which collectively comprise the Library's basic financial statements and have issued our report thereon dated May 31, 2018.

Internal Control Over Financial Reporting

As part of our financial statement audit, we considered the Library's internal control over financial reporting (internal control) to determine the audit procedures appropriate in the circumstances to the extent necessary to support our opinions on the financial statements, but not to the extent necessary to opine on the effectiveness of the Library's internal control. Accordingly, we have not opined on it.

A *deficiency in internal control* exists when the design or operation of a control does not allow management or employees, when performing their assigned functions, to prevent, or detect and timely correct misstatements. A *material weakness* is a deficiency, or combination of internal control deficiencies resulting in a reasonable possibility that internal control will not prevent or detect and timely correct a material misstatement of the Library's financial statements. A *significant deficiency* is a deficiency, or a combination of deficiencies, in internal control that is less severe than a material weakness, yet important enough to merit attention by those charged with governance.

Our consideration of internal control was for the limited purpose described in the first paragraph of this section and was not designed to identify all internal control deficiencies that might be material weaknesses or significant deficiencies. Given these limitations, we did not identify any deficiencies in internal control that we consider material weaknesses. However, unidentified material weaknesses may exist.

Compliance and Other Matters

As part of reasonably assuring whether the Library's financial statements are free of material misstatement, we tested its compliance with certain provisions of laws, regulations, contracts, and grant agreements, noncompliance with which could directly and materially affect the determination of financial statement amounts. However, opining on compliance with those provisions was not an objective of our audit and accordingly, we do not express an opinion. The results of our tests disclosed no instances of noncompliance or other matters we must report under *Government Auditing Standards*.

Purpose of this Report

This report only describes the scope of our internal control and compliance testing and our testing results, and does not opine on the effectiveness of the Library's internal control or on compliance. This report is an integral part of an audit performed under *Government Auditing Standards* in considering the Library's internal control and compliance. Accordingly, this report is not suitable for any other purpose.

A handwritten signature in black ink that reads "Dave Yost". The signature is written in a cursive style with a large, looping "D" and "Y".

Dave Yost
Auditor of State
Columbus, Ohio

May 31, 2018



2017



Comprehensive Annual Financial Report FOR THE YEAR ENDED DECEMBER 31, 2017



FRANKLIN COUNTY, OHIO



This page intentionally left blank.

WORTHINGTON LIBRARIES
WORTHINGTON, OHIO

Comprehensive Annual Financial Report

For the Year Ended December 31, 2017

Issued by:
Worthington Libraries Finance Department

Chuck Gibson
Director/Deputy Fiscal Officer

Sam Kraly
Chief Fiscal Officer

WORTHINGTON LIBRARIES
WORTHINGTON, OHIO
COMPREHENSIVE ANNUAL FINANCIAL REPORT
FOR THE YEAR ENDED DECEMBER 31, 2017
TABLE OF CONTENTS

TITLE	PAGE
INTRODUCTORY SECTION	
Title Page	i
Table of Contents	ii
Letter of Transmittal	v
GFOA Certificate of Achievement	xii
List of Principal Officials.....	xiii
Organizational Chart	xiv
 FINANCIAL SECTION	
Independent Auditors' Report	3
Management’s Discussion and Analysis.....	7
Basic Financial Statements:	
Government-Wide Financial Statements:	
Statement of Net Position.....	13
Statement of Activities.....	14
Fund Financial Statements:	
Balance Sheet – Governmental Funds	15
Reconciliation of Total Governmental Fund Balances to Net Position of Governmental Activities	16
Statement of Revenues, Expenditures and Changes in Fund Balances – Governmental Funds.....	17
Reconciliation of the Statement of Revenues, Expenditures and Changes in Fund Balances to the Statement of Activities – Governmental Funds	18
Statement of Revenues, Expenditures and Changes in Fund Balance – Budget (Non-GAAP Basis) and Actual – General Fund	19
Notes to the Basic Financial Statements.....	21

WORTHINGTON LIBRARIES
WORTHINGTON, OHIO
COMPREHENSIVE ANNUAL FINANCIAL REPORT
FOR THE YEAR ENDED DECEMBER 31, 2017
TABLE OF CONTENTS

TITLE	PAGE
Required Supplementary Information:	
Schedule of Library’s Proportionate Share of the Net Pension (Asset)/Liability ...	49
Schedule of Library Contributions	50
Notes to Required Supplementary Information.....	51
Combining Financial Statements:	
Combining Financial Statements – Nonmajor Governmental Funds:	
Nonmajor Fund Descriptions	54
Combining Balance Sheet – Nonmajor Governmental Funds	55
Combining Statement of Revenues, Expenditures and Changes in Fund Balances – Nonmajor Governmental Funds	56
Combining Balance Sheet – Nonmajor Capital Projects Funds.....	57
Combining Statement of Revenues, Expenditures and Changes in Fund Balances – Nonmajor Capital Projects Funds	58
Individual Schedules of Revenues, Expenditures and Changes in Fund Balance - Budget (Non-GAAP Basis) and Actual – Nonmajor Funds:	
Major Funds:	
General Fund.....	59
Nonmajor Funds:	
Friend’s Foundation Fund.....	61
Termination Benefits Fund	62
Building Fund	63
Technology Fund	64

WORTHINGTON LIBRARIES
WORTHINGTON, OHIO
COMPREHENSIVE ANNUAL FINANCIAL REPORT
FOR THE YEAR ENDED DECEMBER 31, 2017
TABLE OF CONTENTS

TITLE	PAGE
STATISTICAL SECTION	
Section Overview	S3
Net Position by Component – Last Ten Years	S4-S5
Changes in Net Position – Last Ten Years	S6-S7
Fund Balances – Governmental Funds – Last Ten Years	S8-S9
Changes in Fund Balances – Governmental Funds – Last Ten Years	S10-S11
Assessed Value and Estimated Actual Value of Taxable Property – Last Ten Years	S12-S13
Property Tax Levies and Collections – Last Ten Years	S14
Principal Property Taxpayers – 2008 and 2017	S15
Direct and Overlapping Property Tax Rates – Last Ten Years	S16-S17
Computation of Direct and Overlapping Governmental Debt – December 31, 2017	S18
Ratio of Outstanding Debt by Type – Governmental Activities – Last Ten Years	S19
Demographic and Economic Statistics – Last Ten Years	S20
Principal Employers – 2008 and 2017	S21
Library Employees by Function/Program – Last Ten Years	S22-S23
Operating Indicators by Function/Program – Last Ten Years	S24-S25
Capital Assets Statistics by Function/Class – Last Ten Years	S26-S27



May 31, 2018

Citizens who reside in the Worthington City School District
Members of the Worthington Library Board of Trustees

We are very pleased to present the 2017 Comprehensive Annual Financial Report (CAFR) for Worthington Libraries. This report, for the calendar year ended December 31, 2017, has been prepared using generally accepted accounting principles for governments. It contains financial statements and other financial and statistical data that provide complete and full disclosure of all material financial aspects of Worthington Libraries (to be hereinafter referred to as "the Library," and also known as the Worthington Public Library and the Worthington City School District Public Library).

Ohio law requires that public offices reporting pursuant to Generally Accepted Accounting Principles shall file their reports with the Auditor of the State of Ohio and publish notice of the availability of the financial statements within 150 days of the close of each year. The General Purpose Financial Statements from this report were filed to fulfill that requirement for the year ended December 31, 2017.

Management assumes full responsibility for the completeness and reliability of the information contained in this report, based upon a comprehensive framework of internal control that it has established for this purpose. Because the cost of internal control should not exceed anticipated benefits, the objective is to provide reasonable, rather than absolute, assurance that the financial statements are free of any material misstatements.

The Library's financial statements have been audited under contract by the Library's independent auditor, Dave Yost, Auditor of State. The State Auditor's Office has issued an unmodified ("clean") opinion on the Library's financial statements for the year ended December 31, 2017. The Independent Auditor's Report is located at the front of the financial section of this report.

Management's discussion and analysis (MD&A) immediately follows the Independent Auditor's Report and provides a narrative introduction, overview, and analysis of the basic financial statements. The MD&A complements this letter of transmittal and should be read in conjunction with it.

LIBRARY OVERVIEW

The Library known as Worthington Libraries is located in the City of Worthington, Ohio, which is in central Ohio. It serves residents of the Worthington City School District. The Old Worthington Library is located downtown in the City of Worthington, the Northwest Library is located in northwest Columbus, Ohio, and the Worthington Park Library is located in northern Columbus, Ohio. All three locations are within the Worthington City School District.

Worthington Libraries is organized under Ohio State law as a school district public library. A seven-member board, one member appointed each year by the board of education for a seven-year term, governs the Library. Members belong to the community and typically have a history of avidly supporting the Library. Board members hold positions as educators, accountants, independent business owners, attorneys and a variety of other occupations. They come together to apply their knowledge and experience, and offer their insights to provide management guidance and oversight to the Library.

Under the provisions of Statement No. 14 of the Governmental Accounting Standards Board, “The Financial Reporting Entity,” the Library is considered to be a related organization of the Worthington City School District.

The Director is responsible for the administration of the Library, and the Fiscal Officer oversees the Library’s financial affairs. The Board of Trustees has appointed Chuck Gibson to serve as Director/CEO and Sam Kraly to serve as Fiscal Officer.

The taxing authority for the Library is the Board of Education, but the Library operates under a separate budget with funds derived primarily from the Public Library Fund and two local property tax levies totaling 4.8 mills. The Library is fiscally independent of the Worthington City School District Board of Education, although the Board of Education serves in a ministerial capacity as the taxing authority for the Library. The Library’s Board of Trustees independently determines whether to request approval of a tax levy and the role and purpose(s) of the levy. If a request is approved, the Board of Education must put the levy on the ballot. There is no potential for the Library to provide a financial benefit to or impose a financial burden on the Board of Education.

HISTORY OF THE LIBRARY

The roots of Worthington Libraries can be traced to the small New England town of Granby, Connecticut. It was from Granby in 1803 that a group of 100 men, women and children set out to begin a new life in Worthington, Ohio. Among the possessions they brought with them were the books for what they would call the Stanbery Library, a subscription library named for its principal benefactor. This Library was the first in Franklin County and only the third in the State.

Throughout the next 100 years, library service in Worthington took on many forms—books were kept at the school, the local post office, etc.—but it was inevitably kept alive by groups of local citizens. They knew that if a community was to survive and grow, its residents must have a library to provide opportunities for enhanced education and continued learning.

In 1925, the Library was placed in control of the school board, establishing it as a school district public library. This assured the Library of much-needed financial support, but did not provide an actual building to house the collection. This changed in 1927 when Mary Elizabeth Jones Deshler donated money for a library building on the northeast corner of the Village Green, the area set aside by Worthington’s founders for the public pursuit of learning and education. Mrs. Deshler dedicated the building to the memory of her grandfather, Worthington founder James Kilbourne.

In 1973, the Library proposed moving less than a mile north on land it had purchased for this possibility. The community was outraged at the prospect of the Library being located anywhere but the Village Green and defeated levy issues to build a new facility in 1973 and 1974. Library staff persevered in their cramped conditions until a final solution was found in 1976 when the school board agreed to a property swap with the Library. Groundbreaking for the new facility was held on July 4, 1978, and it was dedicated October 21, 1979. The new Library was within sight of the old Village Green location (put to use as a school administration office).

Although the community supported the Library through its patronage, it had thus far refused to pay for it with local tax support. This finally changed in 1992, when the community voted to support a 2.2 mill property tax levy to maintain service at Old Worthington Library and fund a new library to provide service to the growing northwest-area population.

The Northwest Library, which opened in 1996, was made possible through a unique partnership agreement with the Columbus Metropolitan Library. The Columbus Metropolitan Library Board of Trustees agreed to buy the land for a future library and hold it until the Worthington Libraries levy passed in 1992. Northwest Library is jointly operated by Worthington Libraries and the Columbus Metropolitan Library and is managed by Worthington Libraries.

In the early 2000s, the Library was once again faced with an increase in use coupled with a decline in revenue. Thanks to a grassroots campaign led by members of the Friends of Worthington Libraries and the Board of Trustees, the Library was successful in passing a permanent 2.6 mill property tax levy in November 2005.

In 2008, Worthington Libraries opened its third location, the Worthington Park Library, in the Worthington Park Shopping Centre and was expanded into two additional store front units in 2014.

In 2013, Worthington Libraries placed a 2.2 mill permanent replacement levy on the ballot in the Worthington School District. The issue passed with more than 70 percent of the vote, securing the library's financial future for many years.

Worthington Libraries is now one of the busiest library systems in Ohio, ranking eighth in terms of use (behind seven and ahead of one metropolitan library). It provides a wide array of information and services, including technology training, online access, a dynamic collection and programs for residents of the Worthington City School District, and maintains the pioneering spirit of the library's founders in looking for new and better ways to serve patrons.

COMMUNITY OUTLOOK

Worthington is located in the center of the state at Ohio's crossroads and affords easy access to all parts of Ohio and the nation. A suburb of Columbus, the state capital, Worthington offers all of the attractions and conveniences of a big city combined with the charm of small-town living.

Worthington was one of the Midwest's first planned communities, blending commerce, residential life, education and faith. Founded in 1803, Worthington reflects its dignified New England heritage with authentic brick sidewalks leading to the central Village Green where many of the City's original commercial buildings and churches still stand proudly. Today, as in ages past, people come to meet and greet on the Village Green and stroll the streets of downtown Worthington. Worthington's strong community spirit and excellent quality of life serve as the solid foundation for people of all ages, businesses, their employees and families.

Education, a founding tenet of the City, remains a hallmark of Worthington. Its school district serves over 9,000 students and consistently earns the highest ratings on the State's school district report cards. Its

student-focused educational programs are continually recognized as some of the best in the State. This provides a perfect environment for a progressive, forward-looking, service-oriented library to identify and meet emerging needs and to thrive.

Collaboration is also an integral part of the Worthington community brand, and the Library often plays a key role in the development of major community projects and initiatives.

ECONOMIC CONDITIONS AND OUTLOOK

The operational revenue for the Library is based on two major sources of funding, the Public Library Fund (PLF) and two local property tax levies. The PLF is an amount which the State of Ohio appropriates in their biennium budget to support libraries throughout Ohio. The biennium budget was passed during 2017 for the 2018-2019 biennium. The first six months of 2017 were based on 1.7% of the State's General Fund Revenues (GFR). As per the state's budget for the 2018-2019 biennium effective July 2017, the PLF appropriation is currently based on 1.68% of the State's General Fund Revenues (GFR). Each county receives a portion of this allocation, which is further allocated to the libraries in the county.

The second source of funding for the Library is through two property tax levies passed by the residents of the City of Worthington School District. The first continuing levy for 2.6 mills was passed in 2005 while a second continuing levy for 2.2 mills was passed in 2013, replacing an expiring levy of the same millage.

FINANCIAL TRENDS

During the state's biennium budget for 2016-2017, PLF will be distributed in an amount equal to 1.7% of the state's general revenues for the months of January through June. As per the state's budget for the 2018-2019 biennium effective July 2017, the PLF appropriation is currently based on 1.68% of the State's General Fund Revenues (GFR). However, for calendar year 2017, the PLF distributed to Ohio libraries was 17.07% below the amount distributed in calendar year 2008, when libraries were funded by 2.22% of the state's general revenues.

Real estate tax receipts had shown a declining trend since 2006. Both the 1992 and 2005 levies were collected through 2014, but the 1992 levy expired with 2014 being the final collection year. In November 2013, the Board of Trustees of the Worthington Public Library placed a 2.2 mill replacement levy on the ballot, which was passed by the voters of the Worthington School District to be collected starting in 2015. Since this replacement levy reset the collection rate to the levy rate, the effective rate of the two levies for residential and agricultural use increased from 3.54 to 4.33 mills.

Due to a change in the Ohio Revised Code, the Library can now deposit interim and inactive funds with a public depository to be redeposited with one or more federally insured banks, savings banks, or savings and loan associations located in the United States with the redeposited money insured by the Federal Deposit Insurance Corporation. A portion of the funds previously invested in STAROhio were transferred to be invested in insured Certificates of Deposit. This practice continued in 2013 with an increase in funds invested in this manner. Due to the number of Certificates of Deposit required for the amount of investment money available, in 2014 the Library also acquired permissible federal agency securities since the investments could be made in larger increments. This practice was continued in 2017.

FINANCIAL PLANNING AND POLICIES

All budgetary policies are established by Ohio law and/or the Library's Board of Trustees. All funds have annual appropriations approved by the Board. The budget process is as follows:

- A temporary appropriation budget is adopted and filed with the Franklin County Budget Commission by January 1.

- A permanent appropriation budget is adopted and filed with the Franklin County Budget Commission by March 31.
- For annual budgeting purposes, unused balances remain in the accounts where they were allocated.
- The level at which the Board of Trustees approves the budget becomes the legal level of control.
- Transfers of appropriations at this level require Board of Trustees' action.
- The permanent appropriations may be amended or supplemented, based on needs during the year.
- The Franklin County Budget Commission provides an annual certificate of estimated resources. The Library's maximum annual appropriations are controlled by this document. The certificate of estimated resources may be amended during the year if projected increases or decreases in revenue are identified by the Fiscal Officer.
- Fines, fees, and charges are established by the Board of Trustees.
- Library cash is pooled for investment.

The Library's long-range financial plan, which provides projections through 2030, is reviewed in conjunction with every major operating decision that is made.

The Director/CEO and Fiscal Officer regularly meet with the Administrative Team to discuss problems, new initiatives and potential opportunities. New initiatives or reactions to emerging needs and/or problems are discussed by the group. If disbursements are required, plans are developed to establish reasonable cost estimates. If an action appears to be viable, a presentation is prepared to share with the Finance/Operations Committee of the Board of Trustees. Once the Committee understands the proposal and its financial implications on the long-range financial picture, it determines if it should support taking the recommendation to the full Board of Trustees for approval. If the action is supported, the Committee Chair proposes the resolution at the Board meeting. This Committee meets three or four times per year, or as needed in special situations.

In addition to special situations, normal operating disbursements are continuously monitored. Annual budgets are developed based on projections in the long-range plan. Managers review actual monthly disbursements against budget allocations and recommend adjustments as needed. Funds not required for operating disbursements are invested to obtain the best return available with the least amount of risk. STAROhio, administered by the Treasurer of the State of Ohio, was used exclusively in recent years through 2011. The passage of Sub. H.B. 209 by the 129th General Assembly with an effective date of March 22, 2012, expanded state and political subdivision investment authority. The Library now has money deposited with Fifth Third Bank for the purpose of depositing the funds in Certificates of Deposit at federally-insured financial institutions. Beginning in 2015, the Library also has invested in Federal Agency Securities, which are approved by the Library's Investment Policy. STAROhio is still utilized for investment of a portion of interim funds due to its liquidity.

The Board of Trustees receives a monthly update from the Fiscal Officer and copies of financial statements so that they are aware of the financial condition of the Library in any given month.

MAJOR INITIATIVES FOR 2017

In 2017, Worthington Libraries was recognized as one of only 13 libraries in the country to have achieved a five-star rating in every edition of the Index of Public Library Service published by *Library Journal*. The rating is based on key service indicators such as circulation, program attendance, community engagement and computer use.

The Worthington Libraries Board of Trustees and staff continued implementation of the 2016-2018 Strategic Plan. The plan was the culmination of a year-long, staff-led process involving hundreds of patrons and community members in identifying where the library should place organizational emphasis in the next three years.

The Library introduced a redesigned website (worthingtonlibraries.org), which features a clean interface, responsive features and a streamlined design.

In March, the Friends Foundation of Worthington Libraries commissioned a piece of public art for the Library. Sculptor Mike Tizzano worked on the project in the lobby of Old Worthington Library for several months. This provided the public with the rare opportunity to watch an artist at work, to be involved in the process and ask questions as the sculpture developed.

The project garnered attention from local and national media. It was featured on the “Libraries as Incubators” website, and local PBS affiliate WOSU recorded the project for a future broadcast of its “Broad & High” series featuring local artists and public art projects. The sculpture will be placed outside at Old Worthington Library in May 2018.

The Library created its own summer reading program, “The Artful Summer,” which featured partnerships with Worthington Parks and Recreation, McConnell Arts Center, Columbus Museum of Art, and several other organizations and local businesses. Nearly 10,000 people participated in the program.

We partnered with the McConnell Arts Center in the presentation of several Hear & Now author visits that included Brit Bennett and Nancy Isenberg. Nancy Isenberg’s presentation was part of a month-long exhibit at Old Worthington Library on the life of Alexander Hamilton. The exhibit was viewed by more than 1,000 people and featured corresponding programs for all ages.

Worthington Libraries is fortunate to have a dedicated and sizable group of Volunteers and adult volunteers. Each summer, dozens of middle and high school students volunteer their time to staff the summer reading program registration table, and to assist with programs and other tasks. Over 100 adult volunteers support the staff at the Libraries, in Technical Services and in Outreach. Volunteers donated more than 9,000 hours of time in 2017.

Library programs and outreach activities were attended by more than 70,000 people in 2017.

Planning for the Future

Worthington Libraries worked with DesignGroup Architects to conduct a comprehensive facilities review. This included documentation of all library facilities, furnishings and physical plant. A staff survey was part of the analysis. The survey, together with meetings with every library department at each location, helped to further define areas for improvement throughout the system.

The resulting Worthington Libraries Comprehensive Facilities Plan includes a detailed analysis of each library and a roadmap for immediate, intermediate and long-term improvements. Implementing this plan, in stages and as funding allows, will ensure that we will continue to meet changing demands for library service now and in the future.

OTHER INFORMATION

Independent Audit

The Basic Financial Statements of the Library are audited by the Library’s independent auditor, Dave Yost, Auditor of State. The results of the audit are presented in the Independent Auditor’s Report.

Awards

In 2007, Worthington Libraries was selected as the national Library of the Year by *Library Journal* and Thomson-Gale.

In 2011, Worthington Libraries received the John Cotton Dana Award for outstanding public relations for its “Find **yourself** here.” promotional campaign.

In 2017, Worthington Libraries became one of only 13 libraries in the country to receive a five-star rating in each Index of Public Library Service published by *Library Journal*.

The Government Finance Officers Association of the United States and Canada (GFOA) awarded a Certificate of Achievement for Excellence in Financial Reporting to the Worthington Libraries for its Comprehensive Annual Financial Report (CAFR) for the year ended December 31, 2006. In order to be awarded a Certificate of Achievement, a government must publish an easily readable and efficiently organized CAFR. This report must satisfy both generally accepted accounting principles and applicable legal requirements. The Library was pleased to also receive the Certificate of Achievement for our CAFR for the years 2007 through 2016.

A Certificate of Achievement is valid for a period of one year only. The Library believes that the 2017 comprehensive annual financial report continues to meet the Certificate of Achievement Program’s requirements and it is being submitted to the GFOA to determine its eligibility for a 12th certificate.

In addition to the Certificate of Achievement, the Library also received the “Making Your Tax Dollars Count” Award from State Auditor Mary Taylor for fiscal years 2006 through 2009. It is presented for excellence in financial accounting and states, “You are a trustworthy guardian of taxpayer dollars and deserve the highest amount of recognition for your vigilance. You are truly a model for government entities throughout the state of Ohio.” Under State Auditor Dave Yost, the Library received the “Ohio Auditor of State Award with Distinction” for 2010 through 2016 which was awarded for excellence in financial reporting as evidenced by the award-winning CAFR and a clean audit. The award states, “Clean and accurate record-keeping is the foundation for good government, and the taxpayers can take pride in your commitment to accountability.”

Acknowledgements

Appreciation is extended to the Board of Trustees of Worthington Libraries and the employees responsible for contributing to the sound financial position of the Library, especially Finance Manager Sabra Lowe and Finance Specialist Barbara Burkholder. Contributions of information from Director of Community Engagement Lisa Fuller, Deputy Director Monica Baughman, Director of Technical Services Susan Allen and Human Resources Manager Phyllis Winfield were vital in preparing this transmittal letter. Special acknowledgment is extended to Kennedy Cottrell Richards for their guidance in the preparation of this report.



Chuck Gibson
Director/Deputy Fiscal Officer



Samuel Kraly
Chief Fiscal Officer



Government Finance Officers Association

Certificate of
Achievement
for Excellence
in Financial
Reporting

Presented to

**Worthington Libraries
Ohio**

For its Comprehensive Annual
Financial Report
for the Fiscal Year Ended

December 31, 2016

Christopher P. Morvill

Executive Director/CEO

Worthington Libraries
List of Principal Officials
December 31, 2017

Board of Trustees

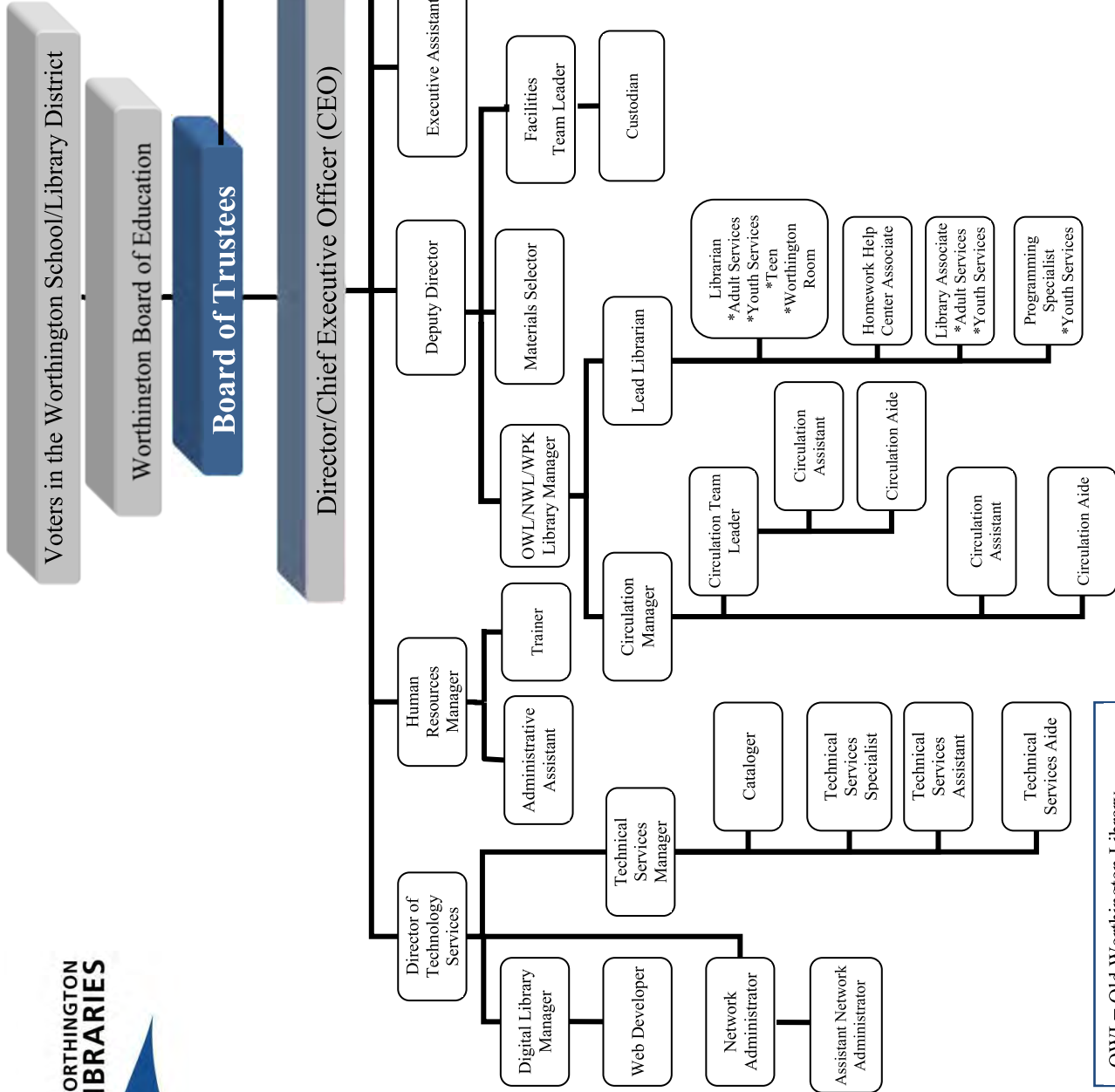
President	J. Craig Baker	2018
Vice President	Linda Mercadante	2019
Secretary	Adam Smith	2021
Member	John Butterfield	2017
Member	Rochelle Wilkerson	2020
Member	Lauren Fromme	2022
Member	Michele Bair	2023
Worthington City School Board Liaison	Jennifer Best	2017

Administration

Director/CEO/Deputy Fiscal Officer	Chuck Gibson
Deputy Director	Monica Baughman
Director of Community Engagement	Lisa Fuller
Human Resources Manager	Phyllis Winfield
Director of Technology Services	Susan Allen
Chief Fiscal Officer	Sam Kraly



**Worthington Libraries
Table of Organization
Effective 12/13/2017**



OWL= Old Worthington Library
 NWL= Northwest Library
 WPK= Worthington Park Library

*Denotes subject specialists within a position description.

FINANCIAL SECTION

This page intentionally left blank.



Dave Yost • Auditor of State

INDEPENDENT AUDITOR'S REPORT

Worthington Libraries
Franklin County
820 High Street
Worthington, Ohio 43085

To the Board of Trustees:

Report on the Financial Statements

We have audited the accompanying financial statements of the governmental activities, the major fund, and the aggregate remaining fund information of the Worthington Libraries, Franklin County, Ohio (the Library), as of and for the year ended December 31, 2017, and the related notes to the financial statements, which collectively comprise the Library's basic financial statements as listed in the table of contents.

Management's Responsibility for the Financial Statements

Management is responsible for preparing and fairly presenting these financial statements in accordance with accounting principles generally accepted in the United States of America; this includes designing, implementing, and maintaining internal control relevant to preparing and fairly presenting financial statements that are free from material misstatement, whether due to fraud or error.

Auditor's Responsibility

Our responsibility is to opine on these financial statements based on our audit. We audited in accordance with auditing standards generally accepted in the United States of America and the financial audit standards in the Comptroller General of the United States' *Government Auditing Standards*. Those standards require us to plan and perform the audit to reasonably assure the financial statements are free from material misstatement.

An audit requires obtaining evidence about financial statement amounts and disclosures. The procedures selected depend on our judgment, including assessing the risks of material financial statement misstatement, whether due to fraud or error. In assessing those risks, we consider internal control relevant to the Library's preparation and fair presentation of the financial statements in order to design audit procedures that are appropriate in the circumstances, but not to the extent needed to opine on the effectiveness of the Library's internal control. Accordingly, we express no such opinion. An audit also includes evaluating the appropriateness of management's accounting policies and the reasonableness of their significant accounting estimates, as well as our evaluation of the overall financial statement presentation.

We believe the audit evidence we obtained is sufficient and appropriate to support our audit opinions.

Opinion

In our opinion, the financial statements referred to above present fairly, in all material respects, the respective financial position of the governmental activities, the major fund, and the aggregate remaining fund information of the Worthington Libraries, Franklin County, Ohio, as of December 31, 2017, and the respective changes in financial position thereof and the budgetary comparison for the General fund thereof for the year then ended in accordance with the accounting principles generally accepted in the United States of America.

Other Matters

Required Supplementary Information

Accounting principles generally accepted in the United States of America require this presentation to include *management's discussion and analysis* and schedules of net pension liabilities and pension contributions listed in the table of contents, to supplement the basic financial statements. Although this information is not part of the basic financial statements, the Governmental Accounting Standards Board considers it essential for placing the basic financial statements in an appropriate operational, economic, or historical context. We applied certain limited procedures to the required supplementary information in accordance with auditing standards generally accepted in the United States of America, consisting of inquiries of management about the methods of preparing the information and comparing the information for consistency with management's responses to our inquiries, to the basic financial statements, and other knowledge we obtained during our audit of the basic financial statements. We do not opine or provide any assurance on the information because the limited procedures do not provide us with sufficient evidence to opine or provide any other assurance.

Supplementary and Other Information

Our audit was conducted to opine on the Library's basic financial statements taken as a whole.

The introductory section, the financial section's combining statements, individual fund statements and schedules and the statistical section information present additional analysis and are not a required part of the basic financial statements.

The statements and schedules are management's responsibility, and derive from and relate directly to the underlying accounting and other records used to prepare the basic financial statements. We subjected this information to the auditing procedures we applied to the basic financial statements. We also applied certain additional procedures, including comparing and reconciling this information directly to the underlying accounting and other records used to prepare the basic financial statements or to the basic financial statements themselves in accordance with auditing standards generally accepted in the United States of America. In our opinion, this information is fairly stated in all material respects in relation to the basic financial statements taken as a whole.

We did not subject the introductory section and statistical section information to the auditing procedures applied in the audit of the basic financial statements and, accordingly, we express no opinion or any other assurance on them.

Other Reporting Required by Government Auditing Standards

In accordance with *Government Auditing Standards*, we have also issued our report dated May 31, 2018, on our consideration of the Library's internal control over financial reporting and our tests of its compliance with certain provisions of laws, regulations, contracts and grant agreements and other matters. That report describes the scope of our internal control testing over financial reporting and compliance, and the results of that testing, and does not opine on internal control over financial reporting or on compliance. That report is an integral part of an audit performed in accordance with *Government Auditing Standards* in considering the Library's internal control over financial reporting and compliance.

A handwritten signature in black ink that reads "Dave Yost". The signature is written in a cursive style with a large, looping "D" and "Y".

Dave Yost
Auditor of State
Columbus, Ohio

May 31, 2018

This page intentionally left blank.

WORTHINGTON LIBRARIES
WORTHINGTON, OHIO
Management's Discussion and Analysis
For the Year Ended December 31, 2017
(Unaudited)

This discussion and analysis of the Worthington Libraries (Library) financial performance provides an overall review of the Library's financial activities for the year ended December 31, 2017. The intent of this discussion and analysis is to explain the Library's financial performance as a whole.

Financial Highlights

Key financial highlights for 2017 are as follows:

- The assets and deferred outflows of resources of the Library exceeded its liabilities and deferred inflows of resources at the close of the most recent fiscal year by \$29.1 million (net position). Of this amount, \$21.0 million represents unrestricted net position, which may be used to meet the Library's ongoing obligations to citizens.
- The Library's total net position increased by \$108,706 during the year.
- At the close of the current year, the Library's governmental funds reported combined fund balances of \$24.3 million, an increase of \$1.4 million in comparison with the prior year. Of this amount, \$21.6 million is available for spending at the Library's discretion (unassigned fund balance).
- The Library has no outstanding long-term debt.

Using the Basic Financial Statements

This annual report consists of a series of financial statements and notes to those statements. These statements are organized so the reader can understand the Library's financial position.

The Statement of Net Position and the Statement of Activities provide information about the activities of the whole Library, presenting both an aggregate view of the Library's finances and a longer-term view of those finances.

Fund financial statements provide the next level of detail. For governmental funds, these statements tell how services were financed in the short-term as well as what remains for future spending. The fund financial statements also look at the Library's most significant funds with all other nonmajor funds presented in total in one column. In the case of the Library, the only major fund is the General Fund.

Reporting the Library as a Whole

Statement of Net Position and the Statement of Activities

The Statement of Net Position and the Statement of Activities reflect how the Library did financially during 2017. These statements include all assets and deferred outflows of resources and all liabilities and deferred inflows of resources using the accrual basis of accounting similar to the accounting used by most private-sector companies. This basis of accounting considers all of the current year's revenues and expenses regardless of when cash is received or paid.

WORTHINGTON LIBRARIES
WORTHINGTON, OHIO
Management's Discussion and Analysis
For the Year Ended December 31, 2017
(Unaudited)

These two statements report the Library's net position and changes in net position. This change in net position is important because it tells the reader whether the financial position of the Library as a whole has increased or decreased from the prior year. Over time, these increases and/or decreases are one indicator of whether the financial position is improving or deteriorating. Causes for these changes may be the result of many factors, some financial, some not. Non-financial factors include the Library's property tax base, current property tax laws in Ohio restricting revenue growth, facility condition, and other factors.

In the Statement of Net Position and the Statement of Activities, the Library reports only governmental activities. Governmental activities are the activities where all of the Library's programs and services are reported. The Library does not have any business-type activities.

Reporting the Library's Most Significant Funds

Fund Financial Statements

Fund financial statements provide detailed information about the Library's major fund – not the Library as a whole. The Library establishes separate funds to better manage its many activities and to help demonstrate that money that is restricted as to how it may be used is being spent for the intended purpose. The funds of the Library are classified as governmental.

Governmental Funds

All of the Library's activities are reported in the governmental funds. The Library's governmental funds are used to account for essentially the same programs reported as governmental activities on the government-wide financial statements. Most of the Library's basic services are reported in these funds and focus on how money flows into and out of the funds, as well as the balances available for spending at year-end. These funds are reported on the modified accrual basis of accounting which measures cash and all other financial assets that can be readily converted to cash. The governmental fund statements provide a detailed short-term view of the Library's general government operations and the basic services being provided.

Because the focus of the governmental funds is narrower than that of the government-wide financial statements, it is useful to compare the information presented for governmental funds with similar information presented for governmental activities on the government-wide financial statements. By doing so, readers may better understand the short-term impact of the Library's financing decisions. Both the governmental fund Balance Sheet and the Statement of Revenues, Expenditures and Changes in Fund Balances provide a reconciliation to help make this comparison between governmental funds and governmental activities.

WORTHINGTON LIBRARIES
WORTHINGTON, OHIO
Management's Discussion and Analysis
For the Year Ended December 31, 2017
(Unaudited)

The Library as a Whole

Table 1 provides a summary of the Library's net position for 2017 compared to 2016:

Table 1
Net Position

	2017	2016	Change
Assets:			
Current Assets	\$33,505,244	\$31,983,946	\$1,521,298
Long-Term Assets			
Capital Assets, Net	8,098,465	8,331,372	(232,907)
Net Pension Asset	86,093	72,667	13,426
Total Assets	<u>41,689,802</u>	<u>40,387,985</u>	<u>1,301,817</u>
Deferred Outflows of Resources:			
Pension	<u>3,085,126</u>	<u>2,301,469</u>	<u>783,657</u>
Total Deferred Outflows of Resources	<u>3,085,126</u>	<u>2,301,469</u>	<u>783,657</u>
Liabilities:			
Current Liabilities	757,019	666,542	90,477
Long-Term Liabilities			
Net Pension Liability	7,302,535	5,402,675	1,899,860
Other Amounts	147,463	156,551	(9,088)
Total Liabilities	<u>8,207,017</u>	<u>6,225,768</u>	<u>1,981,249</u>
Deferred Inflows of Resources:			
Property Taxes	7,344,053	7,300,742	43,311
Pension	89,756	137,548	(47,792)
Total Deferred Inflows of Resources	<u>7,433,809</u>	<u>7,438,290</u>	<u>(4,481)</u>
Net Position:			
Net Investment in Capital Assets	8,098,465	8,258,812	(160,347)
Restricted	9,794	17,950	(8,156)
Unrestricted	21,025,843	20,748,634	277,209
Total Net Position	<u>\$29,134,102</u>	<u>\$29,025,396</u>	<u>\$108,706</u>

Current Assets increased significantly in comparison with the prior year. This increase is primarily the result of an increase in cash and investments. Deferred Outflows of Resources and Net Pension Liability increased significantly as well. These increases are primarily the result of changes in assumptions used in the pension fund actuarial valuation.

WORTHINGTON LIBRARIES
WORTHINGTON, OHIO
Management's Discussion and Analysis
For the Year Ended December 31, 2017
(Unaudited)

Table 2 shows the changes in net position for the year ended December 31, 2017 compared to 2016.

Table 2
Changes in Net Position

	2017	2016	Change
Revenues:			
Program Revenues:			
Charges for Services	\$1,126,298	\$1,193,779	(\$67,481)
Operating Grants, Interest and Contributions	47,882	56,244	(8,362)
Total Program Revenues	<u>1,174,180</u>	<u>1,250,023</u>	<u>(75,843)</u>
General Revenues:			
Property Taxes	7,742,737	7,882,190	(139,453)
Grants and Entitlements			
Not Restricted to Specific Programs	2,713,341	2,721,475	(8,134)
Unrestricted Gifts and Contributions	8,626	5,729	2,897
Earnings on Investments	244,900	109,036	135,864
Gain on Sale of Capital Assets	-	173,197	(173,197)
Miscellaneous	16,924	8,007	8,917
Total General Revenues	<u>10,726,528</u>	<u>10,899,634</u>	<u>(173,106)</u>
Total Revenues	<u>11,900,708</u>	<u>12,149,657</u>	<u>(248,949)</u>
Program Expenses			
Library Services:			
Public Services and Programs	5,013,412	4,309,204	704,208
Collection Development and Processing	2,340,821	2,265,023	75,798
Support Services:			
Facilities Operations and Maintenance	1,218,568	1,178,978	39,590
Information Services Support	1,088,613	1,010,847	77,766
Business Administration	2,130,588	1,825,217	305,371
Total Expenses	<u>11,792,002</u>	<u>10,589,269</u>	<u>\$1,202,733</u>
Increase in Net Position	108,706	1,560,388	
Net Position at Beginning of Year	29,025,396	27,465,008	
Net Position at End of Year	<u>\$29,134,102</u>	<u>\$29,025,396</u>	

WORTHINGTON LIBRARIES
WORTHINGTON, OHIO
Management's Discussion and Analysis
For the Year Ended December 31, 2017
(Unaudited)

Governmental Activities

The Library's general revenues are primarily property taxes and grants and entitlements not restricted to specific programs. These revenues represent 65 and 23 percent, respectively, of the total revenue received for the Library's activities during the year.

Overall, revenues decreased \$248,949, mostly in general revenues. This decrease was primarily the result of a gain on the sale of capital assets in 2016 that was not applicable in 2017.

Total expenses increased \$1,202,733 in comparison with the prior year. This increase is primarily the result of an increase in pension expense, as reported by the pension system.

If you look at the Statement of Activities on page 14, you will see that the first column lists the major services provided by the Library. The next column identifies the costs of providing these services. The major program expenses for governmental activities are for public services and programs. The next column of the statement entitled Program Revenues identifies amounts of revenues that are directly charged for the service provided by the Library. The Net (Expense) Revenue column compares the program revenues to the cost of the service. This "net cost" amount represents the cost of the service which ends up being paid from money primarily provided by local taxpayers. These net costs are paid from the general revenues which are presented at the bottom of the statement.

The Library's Funds

Information about the Library's major funds starts on page 15. These funds are accounted for using the modified accrual basis of accounting. The only major fund the Library has is the General Fund. Overall, fund balance in the General Fund increased \$636,223 in comparison with the prior year. Expenses remained fairly consistent with the prior year, increasing less than 3 percent. Revenues also remained fairly consistent with the prior year, decreasing less than 1 percent.

During 2005, the Library passed a 2.6 mill property tax levy which has stabilized the Library's budget as well as provided funding for renovation and remodeling projects. As part of the levy passage, the Library promised that fund balance would remain positive through 2018. This promise is subject to change due to decreased funding, such as reduced income from the Public Library Fund. In November 2013, the Library passed a 2.2 mill replacement property tax levy that has further assisted with the stabilization of the budget.

WORTHINGTON LIBRARIES
WORTHINGTON, OHIO
Management's Discussion and Analysis
For the Year Ended December 31, 2017
(Unaudited)

General Fund Budgeting Highlights

The Library's budget is prepared according to Ohio law and is based upon accounting for certain transactions on a basis of cash receipts, disbursements, and encumbrances. The most significant budgeted fund is the General Fund.

The variance between actual and final budgeted revenues and other financing sources was insignificant. Actual expenditures were \$1.1 million less than final budgeted expenditures. The variance between the actual and final budgeted revenues and expenditures was the result of conservative budgeting. The variance between original and final budgeted revenues and expenditures was insignificant.

Capital Assets

The Library's investment in capital assets at year-end was \$8.1 million, a decrease of \$232,907 in comparison with the prior year. This decrease represents the amount in which current year depreciation (\$346,000) and disposals (\$31,844) exceeded capital acquisitions (\$144,937).

Table 3 shows 2017 balances compared to 2016.

Table 3
Capital Assets
(Net of Depreciation)

	Governmental Activities		Change
	2017	2016	
Land	\$ 698,891	\$ 698,891	\$ -
Construction in Progress	-	114,480	(114,480)
Buildings and Improvements	6,632,948	6,865,147	(232,199)
Machinery and Equipment	766,626	652,854	113,772
Totals	\$ 8,098,465	\$ 8,331,372	\$ (232,907)

See Note 9 of the Notes to the Basic Financial Statements for more detailed information.

Contacting the Library's Financial Management

This financial report is designed to provide our citizens, taxpayers, and creditors with a general overview of the Library's finances and to reflect the Library's accountability for the monies it receives. Questions concerning any of the information in this report or requests for additional information should be directed to Sam Kraly, Chief Fiscal Officer, Worthington Libraries, 820 High Street, Worthington, OH 43085.

WORTHINGTON LIBRARIES

Worthington, Ohio
Statement of Net Position
December 31, 2017

	<u>Governmental Activities</u>
Assets	
Equity in Pooled Cash and Investments	\$ 23,906,927
Receivables:	
Property Taxes	7,990,270
Intergovernmental	1,385,060
Interest	29,961
Prepaid Items	193,026
Capital Assets:	
Nondepreciable	698,891
Depreciable, Net	7,399,574
Net Pension Asset	86,093
Total Assets	<u>41,689,802</u>
Deferred Outflows of Resources	
Pension	3,085,126
Total Deferred Outflows of Resources	<u>3,085,126</u>
Liabilities	
Accounts Payable	156,806
Accrued Wages and Benefits	213,958
Intergovernmental Payable	85,176
Vacation Leave Payable	301,079
Long-Term Liabilities:	
Due Within One Year	6,255
Due In More Than One Year:	
Net Pension Liability	7,302,535
Other Amounts Due in More Than One Year	141,208
Total Liabilities	<u>8,207,017</u>
Deferred Inflows of Resources:	
Property Taxes	7,344,053
Pension	89,756
Total Deferred Inflows of Resources	<u>7,433,809</u>
Net Position	
Net Investment in Capital Assets	8,098,465
Restricted for:	
Public Services and Programs	9,794
Unrestricted	21,025,843
Total Net Position	<u>\$ 29,134,102</u>

See accompanying notes to the basic financial statements.

WORTHINGTON LIBRARIES
Worthington, Ohio
Statement of Activities
For the Year Ended December 31, 2017

Functions/Programs	Expenses	Program Revenues		Net (Expense) Revenue and Changes in Net Position
		Charges for Services	Operating Grants and Contributions	Governmental Activities
Governmental Activities:				
Library Services:				
Public Services and Programs	\$ 5,013,412	\$ 1,126,298	\$ 47,882	\$ (3,839,232)
Collection Development and Processing	2,340,821	-	-	(2,340,821)
Support Services:				
Facilities Operation and Maintenance	1,218,568	-	-	(1,218,568)
Information Services Support	1,088,613	-	-	(1,088,613)
Business Administration	2,130,588	-	-	(2,130,588)
Total Governmental Activities	\$ 11,792,002	\$ 1,126,298	\$ 47,882	(10,617,822)
General Revenues:				
				7,742,737
				2,713,341
				8,626
				244,900
				16,924
				10,726,528
				108,706
				29,025,396
				\$ 29,134,102

See accompanying notes to the basic financial statements.

WORTHINGTON LIBRARIES

Worthington, Ohio
 Balance Sheet
 Governmental Funds
 December 31, 2017

	General Fund	Other Governmental Funds	Total Governmental Funds
Assets:			
Equity in Pooled Cash and Investments	\$ 22,515,441	\$ 1,391,486	\$ 23,906,927
Receivables:			
Property Taxes	7,990,270	-	7,990,270
Intergovernmental	1,385,060	-	1,385,060
Interest	29,961	-	29,961
Prepaid Items	133,171	59,855	193,026
Total Assets	<u>\$ 32,053,903</u>	<u>\$ 1,451,341</u>	<u>\$ 33,505,244</u>
Liabilities:			
Accounts Payable	\$ 153,766	\$ 3,040	\$ 156,806
Accrued Wages and Benefits	213,958	-	213,958
Intergovernmental Payable	85,176	-	85,176
Total Liabilities	<u>452,900</u>	<u>3,040</u>	<u>455,940</u>
Deferred Inflows of Resources:			
Property Taxes	7,344,053	-	7,344,053
Unavailable Revenue	1,415,080	-	1,415,080
Total Deferred Inflows of Resources	<u>8,759,133</u>	<u>-</u>	<u>8,759,133</u>
Fund Balances:			
Nonspendable:			
Prepaid Items	133,171	59,855	193,026
Restricted for:			
Public Services and Programs	-	9,794	9,794
Committed for:			
Compensated Absences	242,224	-	242,224
Future Facility Expansion	-	377,883	377,883
Assigned for:			
Capital Outlays	-	1,000,769	1,000,769
Library Services	176,037	-	176,037
Support Services	81,301	-	81,301
Future Appropriations	565,642	-	565,642
Unassigned	21,643,495	-	21,643,495
Total Fund Balances	<u>22,841,870</u>	<u>1,448,301</u>	<u>24,290,171</u>
Total Liabilities, Deferred Inflows of Resources and Fund Balances	<u>\$ 32,053,903</u>	<u>\$ 1,451,341</u>	<u>\$ 33,505,244</u>

See accompanying notes to the basic financial statements.

WORTHINGTON LIBRARIES
Worthington, Ohio
Reconciliation of Total Governmental Fund Balances
To Net Position of Governmental Activities
December 31, 2017

Total Governmental Fund Balances	\$ 24,290,171
<i>Amounts reported for governmental activities in the Statement of Net Position are different because:</i>	
Capital assets used in governmental activities are not financial resources and therefore are not reported in the funds.	8,098,465
The net pension asset is not a financial resource and therefore is not reported in the funds.	86,093
Other long-term assets are not available to pay for current period expenditures and therefore are reported as unavailable in the funds.	
Property Taxes Receivable	196,268
Intergovernmental Receivable	1,201,860
Interest Receivable	16,952
Long-Term liabilities are not due and payable in the current period and therefore are not reported in the funds:	
Compensated absences payable, including vacation leave payable	(448,542)
The net pension liability is not due and payable in the current period; therefore, the liability and related deferred inflows/outflows are not reported in governmental funds:	
Deferred Outflows - Pension	3,085,126
Deferred Inflows - Pension	(89,756)
Net Pension Liability	<u>(7,302,535)</u>
Net Position of Governmental Activities	<u>\$ 29,134,102</u>

See accompanying notes to the basic financial statements.

WORTHINGTON LIBRARIES
Worthington, Ohio
Statement of Revenues, Expenditures and Changes in Fund Balances
Governmental Funds
For the Year Ended December 31, 2017

	General Fund	Other Governmental Funds	Total Governmental Funds
Revenues:			
Property Taxes	\$ 7,755,427	\$ -	\$ 7,755,427
Intergovernmental	2,707,421	-	2,707,421
Patron Fines and Fees	113,103	-	113,103
Investment Earnings	239,366	-	239,366
Services Provided to Other Entities	1,013,195	-	1,013,195
Contributions, Gifts and Donations	8,626	47,882	56,508
Miscellaneous	16,924	-	16,924
Total Revenues	<u>11,854,062</u>	<u>47,882</u>	<u>11,901,944</u>
Expenditures:			
Current:			
Library Services:			
Public Services and Programs	4,104,023	56,038	4,160,061
Collection Development and Processing	2,251,634	-	2,251,634
Support Services:			
Facilities Operation and Maintenance	950,580	-	950,580
Information Services Support	863,413	33,462	896,875
Business Administration	1,903,481	-	1,903,481
Capital Outlay	24,565	310,655	335,220
Total Expenditures	<u>10,097,696</u>	<u>400,155</u>	<u>10,497,851</u>
Excess (Deficiency) of Revenues Over (Under) Expenditures	1,756,366	(352,273)	1,404,093
Other Financing Sources (Uses):			
Transfers In	-	1,120,143	1,120,143
Transfers Out	(1,120,143)	-	(1,120,143)
Total Other Financing Sources (Uses)	<u>(1,120,143)</u>	<u>1,120,143</u>	<u>-</u>
Net Change in Fund Balances	636,223	767,870	1,404,093
Fund Balance at Beginning of Year	22,205,647	680,431	22,886,078
Fund Balance at End of Year	<u>\$ 22,841,870</u>	<u>\$ 1,448,301</u>	<u>\$ 24,290,171</u>

See accompanying notes to the basic financial statements.

WORTHINGTON LIBRARIES
Worthington, Ohio
Reconciliation of the Statement of Revenues, Expenditures and Changes
in Fund Balances to the Statement of Activities
Governmental Funds
For the Year Ended December 31, 2017

Net Change in Fund Balances - Total Governmental Funds \$ 1,404,093

Amounts reported for governmental activities in the Statement of Activities are different because:

Governmental funds report capital outlays as expenditures.

However, in the Statement of Activities, the cost of those assets is allocated over their estimated useful lives as depreciation expense.

Capital Outlays	144,937
Depreciation Expense	(346,000)

The effect of various miscellaneous transactions involving capital assets (i.e. sales, trade-ins, and disposals) is to decrease net position. (31,844)

Revenues in the statement of activities that do not provide current financial resources are not reported as revenues in the funds. (1,236)

Contractually required contributions are reported as expenditures in governmental funds; however, the statement of net position reports these amounts as deferred outflows. 652,729

Except for amounts reported as deferred inflows/outflows, changes in the net pension asset and net pension liability are reported as pension expense in the statement of activities. (1,707,714)

Some expenses reported in the Statement of Activities do not require the use of current financial resources and therefore are not reported as expenditures in governmental funds.

Compensated Absences including Vacation Leave	<u>(6,259)</u>
---	----------------

Change in Net Position of Governmental Activities \$ 108,706

WORTHINGTON LIBRARIES
Worthington, Ohio
Statement of Revenues, Expenditures and Changes
in Fund Balances - Budget (Non-GAAP Basis) and Actual
General Fund
For the Year Ended December 31, 2017

	Original Budget	Final Budget	Actual	Variance (Over)/Under
Revenues				
Property Taxes	\$ 7,746,384	\$ 7,746,384	\$ 7,751,120	\$ 4,736
Intergovernmental	2,822,325	2,837,063	2,714,837	(122,226)
Patron Fines and Fees	108,000	108,000	113,103	5,103
Investment Earnings	100,000	160,000	278,464	118,464
Services Provided to Other Entities	1,027,000	1,011,597	1,013,195	1,598
Contributions, Gifts and Donations	-	-	8,626	8,626
Miscellaneous	-	-	16,924	16,924
Total Revenues	<u>11,803,709</u>	<u>11,863,044</u>	<u>11,896,269</u>	<u>33,225</u>
Expenditures				
Current:				
Library Services:				
Public Services and Programs	4,305,038	4,316,525	4,075,667	240,858
Collection Development and Processing	2,609,091	2,632,526	2,424,074	208,452
Support Services:				
Facilities Operation and Maintenance	1,226,102	1,232,175	1,040,794	191,381
Information Services Support	919,661	924,369	887,460	36,909
Business Administration	2,311,082	2,322,279	2,043,212	279,067
Capital Outlay	69,684	61,384	24,565	36,819
Contingency	150,000	150,000	-	150,000
Total Expenditures	<u>11,590,658</u>	<u>11,639,258</u>	<u>10,495,772</u>	<u>1,143,486</u>
Excess of Revenues Over Expenditures	213,051	223,786	1,400,497	1,176,711
Other Financing Sources				
Transfers Out	(1,746,630)	(1,293,468)	(1,293,467)	1
Total Other Financing Sources	<u>(1,746,630)</u>	<u>(1,293,468)</u>	<u>(1,293,467)</u>	<u>1</u>
Net Change in Fund Balance	(1,533,579)	(1,069,682)	107,030	1,176,712
Fund Balances at Beginning of Year	21,415,440	21,415,440	21,415,440	-
Prior Year Encumbrances Appropriated	379,795	379,795	379,795	-
Fund Balances at End of Year	<u>\$ 20,261,656</u>	<u>\$ 20,725,553</u>	<u>\$ 21,902,265</u>	<u>\$ 1,176,712</u>

See accompanying notes to the basic financial statements.

This page intentionally left blank.

WORTHINGTON LIBRARIES
Worthington, Ohio
Notes to the Basic Financial Statements
For the Year Ended December 31, 2017

NOTE 1 – DESCRIPTION OF THE LIBRARY AND REPORTING ENTITY

Worthington Libraries, Franklin County, Ohio (the Library) is a body corporate and politic established to exercise the rights and privileges conveyed to it by the constitution and laws of the State of Ohio. The Library is directed by a seven-member Board of Trustees appointed by the Worthington City School District Board of Education. The Library provides the community with various educational and literary resources. Currently Worthington Libraries consists of three branches, Old Worthington Library, Worthington Park Library, and the Northwest Library.

The Library is fiscally independent of the Worthington City School District Board of Education, although the Board of Education serves in a ministerial capacity as the taxing authority for the Library. The determination to request approval of a tax levy and the role and purpose(s) of the levy are discretionary decisions made solely by the Board of Library Trustees. Once those decisions are made, the Board of Education must put the levy on the ballot. There is no potential for the Library to provide a financial benefit to or impose a financial burden on the Board of Education.

Under the provisions of Governmental Accounting Standards Board (“GASB”) Statement No. 14, “The Financial Reporting Entity”, GASB Statement No. 39, “Determining Whether Certain Organizations are Component Units, an amendment of GASB Statement No. 14”, and Statement No. 61, “Omnibus-an amendment of GASB Statements No. 14 and No. 34”, the Library is considered to be a related organization of the Worthington City School District.

Component units are legally separate organizations for which the Library is financially accountable. The Library is financially accountable for an organization if the Library appoints a voting majority of the organization’s governing board and (1) the Library is able to significantly influence the programs or services performed or provided by the organization; or (2) the Library is legally entitled to or can otherwise access the organization’s resources; the Library is legally obligated or has otherwise assumed the responsibility to finance the deficits of, or provide financial support to, the organization; or the Library is obligated for the debt of the organization. The Library is also financially accountable for any organizations for which the Library approves the budget, the issuance of debt or the levying of taxes, and there is a potential for the organization to provide specific financial benefits to, or impose specific financial burdens on the Library. Component units also include legally separate, tax-exempt entities whose resources are for the direct benefit of the Library, are accessible to the Library and are significant in amount to the Library. The Library has no component units.

NOTE 2 – SUMMARY OF SIGNIFICANT ACCOUNTING POLICIES

The financial statements of Worthington Libraries have been prepared in conformity with accounting principles generally accepted in the United States of America (GAAP) as applied to governmental units. The Governmental Accounting Standards Board (GASB) is the accepted standard-setting body for establishing governmental accounting and financial reporting principles.

a. Basis of Presentation

The Library’s basic financial statements consist of government-wide statements, including a Statement of Net Position and a Statement of Activities, and fund financial statements which provide a more detailed level of financial information.

WORTHINGTON LIBRARIES
Worthington, Ohio
Notes to the Basic Financial Statements
For the Year Ended December 31, 2017

NOTE 2 – SUMMARY OF SIGNIFICANT ACCOUNTING POLICIES (continued)

Government-Wide Financial Statements - The Statement of Net Position and the Statement of Activities display information about the Library as a whole. The Statement of Net Position presents the financial condition of the governmental activities of the Library at year-end. The Statement of Activities presents a comparison between direct expenses and program revenues for each program or function of the Library's governmental activities. Direct expenses are those that are specifically associated with a service, program or department and are therefore clearly identifiable to a particular function. Program revenues include charges paid by the recipient of the goods or services offered by the program. Revenues which are not classified as program revenues are presented as general revenues of the Library, with certain limited exceptions. The comparison of direct expenses with program revenues identifies the extent to which each governmental function is self-financing or draws from the general revenues of the Library.

Fund Financial Statements - During the year, the Library segregates transactions related to certain Library functions or activities in separate funds in order to aid financial management and to demonstrate legal compliance. Fund financial statements are designed to present financial information of the Library at this more detailed level. The focus of governmental fund financial statements is on major funds. Each major fund is presented in a separate column. Nonmajor funds are aggregated and presented in a single column.

b. Fund Accounting

The Library uses funds to maintain its financial records during the year. A fund is defined as a fiscal and accounting entity with a self-balancing set of accounts. The Library's funds consist of governmental funds.

Governmental Funds

Governmental funds are those through which most governmental functions are financed. Governmental fund reporting focuses on the sources, uses and balances of current financial resources. Expendable assets are assigned to the various governmental funds according to the purposes for which they may or must be used. Current liabilities are assigned to the fund from which they will be paid. The difference between governmental fund assets and liabilities and deferred inflows of resources is reported as fund balance. The following is the Library's major fund:

General Fund: This fund accounts for all financial resources except those required to be accounted for in another fund. The General Fund balance is available to the Library for any purpose provided it is expended or transferred according to the general laws of Ohio.

The other governmental funds of the Library account for expenditures related to building projects and technology upgrades funded by transfers from the general fund and support to children, teen, and adult programming funded by the Friends Foundation Fund.

c. Measurement Focus

Government-Wide Financial Statements - The government-wide financial statements are prepared using the economic resources measurement focus. All assets, deferred outflows of resources, liabilities and deferred inflows of resources associated with the operation of the Library are included on the Statement of Net Position. The Statement of Activities presents increases (e.g., revenues) and decreases (e.g., expenses) in total net position.

WORTHINGTON LIBRARIES
Worthington, Ohio
Notes to the Basic Financial Statements
For the Year Ended December 31, 2017

NOTE 2 – SUMMARY OF SIGNIFICANT ACCOUNTING POLICIES (continued)

Fund Financial Statements - All governmental funds are accounted for using a flow of current financial resources measurement focus. With this measurement focus, only current assets, current liabilities and deferred inflows of resources generally are included on the Balance Sheet. The Statement of Revenues, Expenditures and Changes in Fund Balances reports on the sources (i.e., revenues and other financing sources) and uses (i.e., expenditures and other financing uses) of current financial resources. This approach differs from the manner in which the governmental activities of the government-wide financial statements are prepared. Governmental fund financial statements therefore include a reconciliation with brief explanations to better identify the relationship between the government-wide statements and the statements for governmental funds.

d. Basis of Accounting

The basis of accounting determines when transactions are recorded in the financial records and reported on the financial statements. The government-wide financial statements are prepared using the accrual basis of accounting. Governmental funds use the modified accrual basis of accounting. Differences in the accrual and the modified accrual basis of accounting arise in the recognition of revenue, the recording of deferred inflows of resources, and in the presentation of expenses versus expenditures.

Revenues - Exchange and Non-Exchange Transactions

Revenue resulting from exchange transactions, in which each party gives and receives essentially equal value, is recorded on the accrual basis when the exchange takes place. On a modified accrual basis, revenue is recorded in the year in which the resources are measurable and become available. “Measurable” means that the amount of the transaction can be determined and “available” means that the resources are collectible within the current year, or are expected to be collected soon enough thereafter to be used to pay liabilities of the current year. For the Library, available means expected to be received within 31 days of year-end.

Non-exchange transactions, in which the Library receives value without directly giving equal value in return, include property taxes, grants, entitlements and donations. On an accrual basis, revenue from property taxes is recognized in the year for which the taxes are levied (See Note 5). Revenue from grants, entitlements and donations is recognized in the year in which all eligibility requirements have been satisfied. Eligibility requirements include timing requirements, which specify the year when the resources are required to be used or the year when use is first permitted; matching requirements, in which the Library must provide local resources to be used for a specified purpose; and expenditure requirements, in which the resources are provided to the Library on a reimbursement basis. On a modified accrual basis, revenue from non-exchange transactions must also be available before it can be recognized. Under the modified accrual basis, entitlements and earnings on investments are considered to be both measurable and available at year end.

WORTHINGTON LIBRARIES
Worthington, Ohio
Notes to the Basic Financial Statements
For the Year Ended December 31, 2017

NOTE 2 – SUMMARY OF SIGNIFICANT ACCOUNTING POLICIES (continued)

Deferred Outflows/Inflows of Resources

In addition to assets, the statement of financial position will sometimes report a separate section for deferred outflows of resources. Deferred outflows of resources represent a consumption of net position that applies to a future period and will not be recognized as an outflow of resources (expense/expenditure) until then. For the Library, deferred outflows of resources are reported on the government-wide Statement of Net Position for pension. The deferred outflows of resources related to pension are explained in Note 11.

In addition to liabilities, the statement of financial position reports a separate section for deferred inflows of resources. Deferred inflows of resources represent an acquisition of net position that applies to a future period and will not be recognized as an inflow of resources (revenue) until that time. For the Library, deferred inflows of resources include property taxes, unavailable revenue, and pension. Property taxes represent amounts for which there is an enforceable legal claim as of December 31, 2017, but which were levied to finance 2018 operations. These amounts have been recorded as a deferred inflow on both the government-wide statement of net position and the governmental fund financial statements. Unavailable revenue is reported only on the governmental funds balance sheet, and represents receivables which will not be collected within the available period. For the Library, unavailable revenue includes delinquent property taxes, homestead and rollback reimbursements, public library funding, and investment earnings. These amounts are deferred and recognized as an inflow of resources in the period the amounts become available. Deferred inflows of resources related to pension are reported on the government-wide Statement of Net Position. (See Note 11).

Expenses/Expenditures

On the accrual basis of accounting, expenses are recognized at the time they are incurred.

The measurement focus of governmental fund accounting is on decreases in net financial resources (expenditures) rather than expenses. Expenditures are generally recognized in the accounting period in which the related fund liability is incurred, if measurable. Allocations of costs, such as depreciation and amortization, are not recognized in governmental funds.

e. Cash and Investments

To improve cash management, cash received by the Library is pooled. Individual fund integrity is maintained through the Library's records. Interest in the pool is presented as "Equity in Pooled Cash and Investments" on the financial statements. Investments with an original maturity of three months or less at the time of purchase and investments of the cash management pool are presented on the financial statements as cash equivalents.

During 2017, the Library invested in negotiable certificates of deposits, federal agency securities, a U.S. government money market account and the State Treasury Asset Reserve of Ohio (STAROhio). STAR Ohio is an investment pool managed by the State Treasurer's Office which allows governments within the State to pool their funds for investment purposes. STAR Ohio is not registered with the SEC as an investment company, but has adopted Governmental Accounting Standards Board (GASB), Statement No. 79, "Certain External Investment Pools and Pool Participants." The Library measures their investment in

WORTHINGTON LIBRARIES
Worthington, Ohio
Notes to the Basic Financial Statements
For the Year Ended December 31, 2017

NOTE 2 – SUMMARY OF SIGNIFICANT ACCOUNTING POLICIES (continued)

STAR Ohio at the net asset value (NAV) per share provided by STAR Ohio. The NAV per share is calculated on an amortized cost basis that provides a NAV per share that approximates fair value.

For the fiscal year 2017, there were no limitations or restrictions on STAR Ohio participant withdrawals due to redemption notice periods, liquidity fees, or redemption gates. However, notice must be given 24 hours in advance of all deposits and withdrawals exceeding \$25 million. STAR Ohio reserves the right to limit the transaction to \$50 million, requiring the excess amount to be transacted the following business day(s), but only to the \$50 million limit. All accounts of the participant will be combined for these purposes.

Following Ohio statutes, the Board of Trustees specified the funds to receive an allocation of interest earnings. Interest receipts credited to the General Fund during 2017 were \$239,366, including \$8,410 assigned from other Library funds.

f. Prepaid Items

Payments made to vendors for services that will benefit periods beyond December 31, 2017, are recorded as prepaid items using the consumption method. A current asset for the prepaid amount is recorded at the time of the purchase and an expenditure/expense is reported in the year in which services are consumed.

g. Capital Assets

The Library’s only capital assets are general capital assets. General capital assets are those assets specifically related to governmental activities. General capital assets usually result from expenditures in the governmental funds. These assets are reported in the governmental activities column of the government-wide Statement of Net Position but are not reported in the fund financial statements.

All capital assets are capitalized at cost (or estimated historical cost, which is determined by indexing the current replacement costs back to the year of acquisition) and updated for additions and retirements during the year. Donated capital assets are recorded at their acquisition values as of the date received. The Library maintains a capitalization threshold of \$5,000. The Library does not possess any infrastructure. Improvements are capitalized; the costs of normal maintenance and repairs that do not add to the value of the asset or materially extend an asset’s life are not capitalized. In addition, library books are reflected as expenses when purchased and are not capitalized as assets of the Library.

All reported capital assets, except land and construction in progress, are depreciated. Improvements are depreciated over the remaining useful lives of the related capital assets. Depreciation is computed using the straight-line method over the following useful lives:

Description	Estimated Lives
Buildings and Improvements	30-100 years
Machinery and Equipment	5-20 years
Vehicles	8 years

WORTHINGTON LIBRARIES
Worthington, Ohio
Notes to the Basic Financial Statements
For the Year Ended December 31, 2017

NOTE 2 – SUMMARY OF SIGNIFICANT ACCOUNTING POLICIES (continued)

h. Compensated Absences

Vacation benefits are accrued as a liability as the benefits are earned if the employees' rights to receive compensation are attributable to services already rendered and it is probable that the Library will compensate the employees for the benefits through paid time off or some other means. The Library records a liability for accumulated unused vacation time when earned for all employees with more than one year of service.

Sick leave benefits are accrued as a liability using the termination payment method. An accrual for earned sick leave is made to the extent it is probable that the benefits will result in termination payments. The liability is an estimate based on the Library's past experience of making termination payments.

The entire compensated absences liability is reported on the government-wide financial statements.

i. Fund Balance

Fund balance is divided into five classifications based primarily on the extent to which the Library is bound to observe constraints imposed upon the use of the resources in governmental funds. The classifications are as follows:

Nonspendable – The nonspendable fund balance category includes amounts that cannot be spent because they are not in spendable form, or are legally or contractually required to be maintained intact. The "not in spendable form" includes items that are not expected to be converted to cash.

Restricted – Fund balance is reported as restricted when constraints placed on the use of resources are either externally imposed by creditors (such as through debt covenants), grantors, contributors, or laws or regulations of other governments, or is imposed by law through constitutional provisions or enabling legislation.

Committed – The committed classification includes amounts that can be used for the specific purposes imposed by a formal action (resolution) of the Board of Trustees. The committed amounts cannot be used for any other purpose unless the Board of Trustees removes or changes the specified use by taking the same type of action (resolution) it employed to previously commit those amounts. In contrast to fund balance that is restricted by enabling legislation, committed fund balance may be redeployed for other purposes with appropriate due process. Constraints imposed on the use of underlying revenue; therefore, compliance with these constraints is not considered to be legally enforceable. Committed fund balance also incorporates contractual obligations to the extent that existing resources in the fund have been specifically committed for use in satisfying those contractual requirements.

Assigned – Amounts in the assigned fund balance classification are intended to be used by the Library for specific purposes but do not meet the criteria to be classified as restricted or committed. In governmental funds other than the General Fund, assigned fund balance represents the remaining amount that is not restricted or committed. These amounts are assigned by the Board of Trustees. In the General Fund, assigned amounts represent intended uses established by the Board of Trustees, or a library official delegated that authority by State statute. State statute authorizes the Chief Fiscal Officer to assign fund balance for purchases on order provided such amounts have been lawfully appropriated.

WORTHINGTON LIBRARIES
Worthington, Ohio
Notes to the Basic Financial Statements
For the Year Ended December 31, 2017

NOTE 2 – SUMMARY OF SIGNIFICANT ACCOUNTING POLICIES (continued)

Unassigned – Unassigned fund balance is the residual classification for the General Fund and includes all spendable amounts not contained in the other classifications. In other governmental funds, the unassigned classification is used only to report a deficit balance resulting from overspending for specific purposes for which amounts had been restricted, committed, or assigned.

The Library applies restricted resources first when an expense is incurred for purposes which both restricted and unrestricted fund balance/net position are available. The Library considers committed, assigned and unassigned fund balances, respectively, to be spent when expenditures are incurred for purposes for which any of the unrestricted fund balance classifications could be used.

j. Net Position

Net position represents the difference between all other elements in a statement of financial position. Net Investment in Capital Assets consists of capital assets, net of accumulated depreciation, reduced by the outstanding balances of any borrowings used for the acquisition, construction or improvement of those assets; however, the Library has no debt. The Library applies restricted resources when an expense is incurred for purposes for which both restricted and unrestricted net position is available.

k. Internal Activity

Transfers within governmental activities are eliminated on the government-wide financial statements. Internal allocations of overhead expenses from one function to another or within the same function are eliminated on the Statement of Activities. Payments for interfund services provided and used are not eliminated.

Exchange transactions between funds are reported as revenues in the seller funds and as expenditures/expenses in the purchaser funds. Flows of cash or goods from one fund to another without a requirement for repayment are reported as interfund transfers. Interfund transfers are reported as other financing sources/uses in governmental funds. Repayments from funds responsible for particular expenditures/expenses to the funds that initially paid for them are not presented on the financial statements.

l. Budgetary Process

All funds, except agency funds, are legally required to be budgeted and appropriated. The budget documents prepared by the Library are the tax budget, the certificate of estimated resources, and the appropriations resolution, all of which are prepared on the budgetary basis of accounting. The tax budget demonstrates a need for existing or increased tax rates. The certificate of estimated resources establishes a limit on the amount the Board of Trustees may appropriate. The appropriations resolution is the Board of Trustees' authorization to spend resources and sets annual limits on expenditures plus encumbrances at the level of control selected by the Board of Trustees. The legal level of control for the Friend's Foundation Fund is at the fund level. The legal level of control has been established at the fund, program, and object code level for all other Library funds. Budgetary modifications at the legal level of control may only be made by resolution of the Board of Trustees.

WORTHINGTON LIBRARIES
Worthington, Ohio
Notes to the Basic Financial Statements
For the Year Ended December 31, 2017

NOTE 2 – SUMMARY OF SIGNIFICANT ACCOUNTING POLICIES (continued)

The certificate of estimated resources may be amended during the year if projected increases or decreases in revenue are identified by the Chief Fiscal Officer. The amounts reported as the original budgeted amounts on the budgetary statements reflect the amounts on the certificate of estimated resources when the original appropriations were adopted. The amounts set forth in the budgetary statements and schedules as final budgeted amounts represent amounts from the amended certificate in force at the time final appropriations were passed by the Board of Trustees.

m. Pensions

For purposes of measuring the net pension asset, net pension liability, deferred outflows of resources and deferred inflows of resources related to pensions, and pension expense, information about the fiduciary net position of the pension plans and additions to/deductions from their fiduciary net position have been determined on the same basis as they are reported by the pension system. For this purpose, benefits payments (including refunds of employee contributions) are recognized when due and payable in accordance with benefit terms. The pension system reports investments at fair value.

n. Accrued Liabilities and Long-term Obligations

All payables, accrued liabilities and long-term obligations are reported in the government-wide financial statements.

In general, payables and accrued liabilities that, once incurred, are paid in a timely manner and in full from current financial resources, are reported as obligations of the funds. However, compensated absences, claims and judgments, including vacation leave payable, and net pension liability that will be paid from the governmental funds are reported as a liability in the fund financial statements only to the extent that they are due for payment during the current year.

o. Estimates

The preparation of the financial statements in conformity with GAAP requires management to make estimates and assumptions that affect the amounts reported in the financial statements and accompanying notes. Actual results may differ from those estimates.

NOTE 3 – BUDGETARY BASIS OF ACCOUNTING

While reporting financial position, results of operations and changes in fund balance on the basis of accounting principles generally accepted in the United States of America (GAAP), the budgetary basis, as provided by law, is based upon accounting for certain transactions on a basis of cash receipts, disbursements and encumbrances. The Statements of Revenues, Expenditures and Changes in Fund Balance - Budget and Actual (Non-GAAP Basis) is presented for the General Fund to provide a meaningful comparison of actual results with the budget.

WORTHINGTON LIBRARIES
 Worthington, Ohio
 Notes to the Basic Financial Statements
 For the Year Ended December 31, 2017

NOTE 3 – BUDGETARY BASIS OF ACCOUNTING (continued)

The major differences between the budget basis and the GAAP basis are that:

- Revenues are recorded when received in cash (budget basis) as opposed to when susceptible to accrual (GAAP basis).
- Expenditures are recorded when paid in cash (budget basis) as opposed to when the liability is incurred (GAAP basis).
- Outstanding year-end encumbrances are treated as expenditures (budget basis) rather than restricted, committed, or assigned fund balance (GAAP basis).
- Investments are reported at fair value (GAAP basis) rather than at cost (budget basis).
- Some funds are included in the general fund (GAAP basis), but have legally adopted budgets, (budget basis).

The adjustments necessary to convert the results of operations for the year on the GAAP basis to the budget basis are as follows:

Net Change in Fund Balance	
	General Fund
GAAP Basis	\$636,223
Revenue Accruals	(131,117)
Expenditure Accruals	220,607
Adjustment for Encumbrances	(496,135)
Funds Budgeted Elsewhere	(122,548)
Budget Basis	\$107,030

Certain funds that are legally budgeted in separate special revenue funds are considered part of the general fund on a GAAP basis. This includes the termination benefits fund.

NOTE 4 – DEPOSITS AND INVESTMENTS

State statutes classify monies held by the Library into three categories.

Active deposits are public deposits necessary to meet current demands on the treasury. Such monies must be maintained either as cash in the Library Treasury, in commercial accounts payable or withdrawable on demand, including negotiable order of withdrawal (NOW) accounts, or in money market deposit accounts.

Inactive deposits are public deposits that the Board of Trustees has identified as not required for use within the current five-year period of designation of depositories. Inactive deposits must either be evidenced by certificates of deposit maturing not later than the end of the current period of designation of depositories, or by savings or deposit accounts including, but not limited to, passbook accounts.

Interim deposits are deposits of interim monies. Interim monies are those monies which are not needed for immediate use but which will be needed before the end of the current period of designation of depositories.

WORTHINGTON LIBRARIES
Worthington, Ohio
Notes to the Basic Financial Statements
For the Year Ended December 31, 2017

NOTE 4 – DEPOSITS AND INVESTMENTS (continued)

Interim deposits must be evidenced by time certificates of deposit maturing not more than one year from the date of deposit, or by savings or deposit accounts, including passbook accounts.

Interim monies held by the Library may be deposited or invested in the following securities:

1. United States Treasury Notes, bills, bonds, or any other obligation or security issued by the United States Treasury or any other obligation guaranteed as to principal and interest by the United States;
2. Bonds, notes, debentures, or any other obligations or securities issued by any federal government agency or instrumentality including, but not limited to, the Federal National Mortgage Association, Federal Home Loan Bank, Federal Farm Credit Bank, Federal Home Loan Mortgage Corporation, Government National Mortgage Association, and Student Loan Marketing Association. All federal agency securities shall be direct issuances of federal government agencies or instrumentalities;
3. Written repurchase agreements in the securities listed above;
4. Commercial paper and bankers' acceptances if trading requirements have been met;
5. Bonds and other obligations of the State of Ohio;
6. No-load money market mutual funds consisting exclusively of obligations describe in division (1) or (2) above; and
7. The State Treasurer's investment pool (STAROhio).

Investments in stripped principal or interest obligations, reverse repurchase agreements and derivatives are prohibited. The issuance of taxable notes for the purpose of arbitrage, the use of leverage and short selling are also prohibited. Investments may only be made through specified dealers and institutions.

Deposits:

At December 31, 2017, the carrying amount of the Library's deposits was \$136,737 and the bank balance was \$439,505. \$310,228 of the Library's bank balance was covered by Federal Deposit Insurance. In addition, the Library had petty cash/change funds totaling \$3,576 at year-end.

Custodial credit risk is the risk that, in the event of bank failure, the Library's deposits may not be returned. Public depositories must give security for all public funds on deposit. These institutions may either specifically collateralize individual accounts in addition to amounts insured by the FDIC, or may pledge a single pool of collateral for the benefit of every depositor via the Ohio Pooled Collateral Program administered by the Treasurer of State (TOS). Specific collateral must equal or exceed 105% of the carrying value of assets, whereas pooled collateral must equal or exceed 102% or lesser amount as determined by the TOS. The Library has no deposit policy for custodial credit risk beyond the requirements of State statute. Although the securities were held by the pledging institutions' trust department or TOS and all statutory requirements for the deposit of money had been followed, noncompliance with federal requirements could potentially subject the Library to a successful claim by the FDIC.

WORTHINGTON LIBRARIES
Worthington, Ohio
Notes to the Basic Financial Statements
For the Year Ended December 31, 2017

NOTE 4 – DEPOSITS AND INVESTMENTS (continued)

Investments

As of December 31, 2017, the Library’s had the following investments:

	Amount	Credit Rating	Maturity in Years		
			less than 1	1-3	3-5
FHLM	3,427,899	AA+	-	1,801,437	1,626,462
FHLB	1,080,844	AA+	-	585,384	495,460
Negotiable Certificates of Deposit	5,742,929	NR	1,238,018	4,260,023	244,888
Money Market Fund	37,801	NR	37,801	-	-
STAR Ohio	13,477,141	AAAm	13,477,141	-	-
Total	<u>\$ 23,766,614</u>		<u>\$ 14,752,960</u>	<u>\$ 6,646,844</u>	<u>\$ 2,366,810</u>

The Library measures their investment in STAR Ohio at the net asset value (NAV) per share provided by STAR Ohio. The NAV per share is calculated on an amortized cost basis that provides a NAV per share that approximates fair value. The Library measures all other investments at fair value. The Library categorizes its fair value measurements within the fair value hierarchy established by generally accepted accounting principles. The hierarchy is based on the valuation inputs used to measure the fair value of the asset. Level 1 inputs are quoted prices in active markets for identical assets; Level 2 inputs are significant other observable inputs; Level 3 inputs are significant unobservable inputs. All of the Library’s investments reported at fair value are valued using Level 2 inputs, except for the money market fund, which was valued using Level 1 inputs.

Interest Rate Risk - The Library’s investment policy does not address interest rate risk. State statute requires that an investment mature within five years from the date of purchase, unless matched to a specific obligation or debt of the Library and that an investment must be purchased with the expectation that it will be held to maturity. The Library’s policy also states that, to the extent possible and prudent, the Library will attempt to match its investment maturities with anticipated cash flow requirements.

Credit Risk - Ohio law requires that STAR Ohio maintain the highest rating provided by at least one nationally recognized standard rating service. The negotiable certificates of deposit are in denominations of under \$250,000 each, in separate banks, and are insured by the Federal Deposit Insurance Corporation (FDIC). The negotiable certificates of deposit are, therefore, not subject to credit risk. The Library’s investment policy states that credit risk will be minimized by diversifying assets and ensuring that the minimum credit quality ratings required by Ohio Law exist.

Custodial Credit Risk - Custodial Credit Risk is the risk that in the event of the failure of the counterparty, the Library will not be able to recover the value of its investments or collateral securities that are in the possession of an outside party. All of the Library’s securities are either insured and registered in the name of the Library or at least registered in the name of the Library. The Library has no investment policy dealing with investment custodial risk beyond the requirement in State statute the prohibits the payments for investment prior to the delivery of the securities representing such investments to the Fiscal Officer/CEO or qualified trustee.

WORTHINGTON LIBRARIES
Worthington, Ohio
Notes to the Basic Financial Statements
For the Year Ended December 31, 2017

NOTE 5 – PROPERTY TAXES

Property taxes include amounts levied against all real and public utility property located in the Library district. Property tax revenues received during 2017 for real and public utility property taxes represents collections of the 2016 taxes.

2017 real property taxes are levied after October 1, 2017, on the assessed value as of January 1, 2017, the lien date. Assessed values are established by State law at 35 percent of appraised market value. 2017 real property taxes are collected in and intended to finance 2018 operations.

Real property taxes are payable annually or semi-annually. If paid annually, payment is due December 31; if paid semi-annually, the first payment is due December 31, with the remainder payable by June 20. Under certain circumstances, State statute permits alternate payment dates to be established.

Public utility tangible personal property currently is assessed at varying percentages of true value; public utility real property is assessed at 35 percent of true value. 2017 public utility property taxes became a lien December 31, 2016, are levied after October 1, 2017, and are collected in 2018 with real property taxes.

The full tax rate for all Library operations for the year ended December 31, 2017, was \$4.80 per \$1,000 of assessed value. The assessed values of real property and public utility property, upon which 2017 property tax receipts were based are as follows:

Assessed Value
<u>\$1,810,436,010</u>
44,365,290
<u><u>\$1,854,801,300</u></u>

The County Treasurer collects property taxes on behalf of all taxing districts in the county, including the Library. The County Auditor periodically remits to the Library its portion of the taxes collected. Property taxes receivable represents real and public utility property taxes and outstanding delinquencies which were measurable as of December 31, 2017, and for which there was an enforceable legal claim. In governmental funds, the portion of the receivable not levied to finance 2017 operations is offset to deferred inflows of resources – property taxes. On the accrual basis, collectible delinquent property taxes have been recorded as a receivable and revenue while on the modified accrual basis the revenue has been reported as deferred inflows of resources – unavailable revenue.

NOTE 6 – GRANTS-IN-AID

A major source of revenue for Ohio public libraries is the Public Library Fund (PLF). The source of money for this fund comes from a percentage of the State taxes collected in Ohio including State income tax and sales tax. During 2017, the PLF distribution was based on 1.7 percent of the State’s General Revenue Fund tax revenue for the first and 1.68 percent for the second half of the year. The Franklin County Budget Commission allocates these funds to the Library based on a formula that was negotiated and agreed to by the seven public libraries located in the county. The County Budget Commission cannot reduce its allocation of these funds to the Library based on any additional revenues the Library receives.

WORTHINGTON LIBRARIES
Worthington, Ohio
Notes to the Basic Financial Statements
For the Year Ended December 31, 2017

NOTE 7 – RECEIVABLES

Receivables at December 31, 2017, consisted of property taxes, intergovernmental, and interest receivables. All receivables are considered collectible in full due to the ability to foreclose for the nonpayment of taxes and the stable condition of State programs. All receivables, except property taxes, are expected to be received within one year. Property taxes, although ultimately collectible, include some portion of delinquents that will not be collected within one year.

A summary of the principal items of intergovernmental receivables follows:

<u>Governmental Activities:</u>	<u>Amounts</u>
Public Library Fund	\$1,142,775
Homestead and Rollback	242,285
Total	<u><u>\$1,385,060</u></u>

NOTE 8 – TAX ABATEMENTS

Under tax abatement agreements entered into by other governments, the Library’s property tax revenues were reduced as follows:

<u>Government with Tax Abatement Agreement</u>	<u>Amount of Property Taxes Abated</u>
City of Columbus	\$ 43,001
City of Worthington	139,601
Total	<u><u>\$ 182,602</u></u>

WORTHINGTON LIBRARIES
Worthington, Ohio
Notes to the Basic Financial Statements
For the Year Ended December 31, 2017

NOTE 9 – CAPITAL ASSETS

Capital assets activity for the fiscal year ended December 31, 2017, was as follows:

	Balance at 12/31/2016	Additions	Deletions	Transfers	Balance At 12/31/2017
Governmental Activities:					
Capital Assets, Not Being Depreciated:					
Land	\$ 698,891	\$ -	\$ -	\$ -	\$ 698,891
Construction in Progress	114,480	44,780	(21,540)	(137,720)	-
Total Capital Assets, Not Being Depreciated	<u>813,371</u>	<u>44,780</u>	<u>(21,540)</u>	<u>(137,720)</u>	<u>698,891</u>
Capital Assets, Being Depreciated					
Buildings and Improvements	10,817,030	12,360	-	-	10,829,390
Machinery and Equipment	1,260,089	87,797	(184,814)	137,720	1,300,792
Vehicles	18,300	-	-	-	18,300
Total Capital Assets, Being Depreciated	<u>12,095,419</u>	<u>100,157</u>	<u>(184,814)</u>	<u>137,720</u>	<u>12,148,482</u>
Less Accumulated Depreciation:					
Buildings and Improvements	(3,951,883)	(244,559)	-	-	(4,196,442)
Machinery and Equipment	(607,235)	(101,441)	174,510	-	(534,166)
Vehicles	(18,300)	-	-	-	(18,300)
Total Accumulated Depreciation	<u>(4,577,418)</u>	<u>(346,000)</u>	<u>174,510</u>	<u>-</u>	<u>(4,748,908)</u>
Capital Assets, Being Depreciated, Net	<u>7,518,001</u>	<u>(245,843)</u>	<u>(10,304)</u>	<u>137,720</u>	<u>7,399,574</u>
Governmental Activities Capital Assets, Net	<u>\$ 8,331,372</u>	<u>\$ (201,063)</u>	<u>\$ (31,844)</u>	<u>\$ -</u>	<u>\$ 8,098,465</u>

Depreciation expense was charged to governmental programs as follows:

Library Services:	
Public Services and Programs	\$169,039
Collection Development and Processing	3,037
Support Services:	
Facilities Operations and Maintenance	64,259
Information Services Support	86,622
Business Administration	23,043
Total Depreciation Expense	<u>\$346,000</u>

NOTE 10 – RISK MANAGEMENT

Property and Liability - The Library is exposed to various risks of loss related to torts; theft of, damage to, and destruction of assets; errors and omissions; injuries to employees and natural disasters. During 2017, the Library contracted with the Lauterbach & Eilber Company. The commercial package policy includes coverage for commercial property, commercial inland marine, commercial general liability, commercial crime, commercial automobile, and a commercial umbrella through Liberty Mutual.

WORTHINGTON LIBRARIES
Worthington, Ohio
Notes to the Basic Financial Statements
For the Year Ended December 31, 2017

NOTE 10 – RISK MANAGEMENT (continued)

Commercial property consists of a \$16,357,500 blanket policy that covers buildings, business personal property, property of others, and equipment breakdown. It includes earthquake damage with sublimits of \$4,000,000 at Old Worthington Library and \$5,000,000 at Northwest Library and is a replacement cost valuation. Water backup from sewers and drains is covered with a \$100,000 limit at Old Worthington Library and a \$25,000 limit at Northwest Library, with a \$2,500 deductible per occurrence.

A commercial inland marine policy covers valuable papers and records. It has a \$5,000,000 limit on books, \$2,500,000 limit on audio/visual equipment with a \$250 deductible, and \$250,000 limit on fine arts with a \$1,000 deductible. It covers all risk of direct physical loss at a cash value valuation.

Commercial general liability coverage provides \$2,000,000 general aggregate coverage for bodily injury and property damage, with a \$1,000,000 limit for each occurrence. Claims coverage for products and completed operations aggregate is in place for \$2,000,000, \$1,000,000 for personal and advertising injury, \$300,000 fire damage limit, and \$15,000 medical expense limit for any one person. A \$2,000,000 policy is in place for aggregate Employer Liability (Ohio Stop Gap) with Intentional Tort coverage, with a \$500,000 limit for each accident, each employee and aggregate limit. There is also a \$2,000,000 commercial umbrella policy.

The commercial automobile policy has a \$100 comprehensive deductible and a \$250 collision deductible. This insurance includes a bodily injury and property damage combined single limit of \$1,000,000 bodily injury and property damage limit, with a \$1,000,000 non-owned and hired auto liability, a \$50,000 hired car physical damage, \$1,000,000 uninsured/underinsured motorist, \$5,000 medical payments, and a \$1,000 rental reimbursement.

Settled claims have not exceeded this commercial coverage in any of the past three years. There have been no significant reductions in insurance coverage from the prior year.

Directors and Officers - A directors' and officers' insurance policy through the Philadelphia Insurance Company is in place providing a \$1,000,000 limit per loss, \$1,000,000 employment practices liability limit, \$1,000,000 aggregate for each policy period, and a \$5,000 deductible.

Cyber Security - Cyber Security is written through Philadelphia Insurance. The limits are \$500,000 security events costs; \$1,000,000 each for network security and privacy liability; employer privacy liability; electronic media liability. There is an annual aggregate of \$1,000,000 and a \$10,000 deductible for each coverage.

Public Official Bonds - The fiscal officer and two deputy fiscal officers have public official bonds written through Cincinnati Insurance in the amount of \$100,000 each.

WORTHINGTON LIBRARIES
Worthington, Ohio
Notes to the Basic Financial Statements
For the Year Ended December 31, 2017

NOTE 11 – DEFINED BENEFIT PENSION PLANS

Net Pension Asset/Liability

The net pension asset and net pension liability reported on the Statement of Net Position represent an asset/liability to employees for pensions. Pensions are a component of exchange transactions—between an employer and its employees—of salaries and benefits for employee services. Pensions are provided to an employee—on a deferred-payment basis—as part of the total compensation package offered by an employer for employee services each financial period. The obligation to sacrifice resources for pensions is a present obligation because it was created as a result of employment exchanges that already have occurred.

The net pension asset and net pension liability represents the Library’s proportionate share of each pension plan’s collective actuarial present value of projected benefit payments attributable to past periods of service, net of each pension plan’s fiduciary net position. The net pension asset and net pension liability calculations are dependent on critical long-term variables, including estimated average life expectancies, earnings on investments, cost of living adjustments and others. While these estimates use the best information available, unknowable future events require adjusting this estimate annually.

Ohio Revised Code limits the Library’s obligation for this liability to annually required payments. The Library cannot control benefit terms or the manner in which pensions are financed; however, the Library does receive the benefit of employees’ services in exchange for compensation including pension.

GASB 68 assumes the net pension liability is solely the obligation of the employer, because (1) they benefit from employee services; and (2) State statute requires all funding to come from these employers. All contributions to date have come solely from these employers (which also includes costs paid in the form of withholdings from employees). State statute requires the pension plans to amortize unfunded liabilities within 30 years. If the amortization period exceeds 30 years, each pension plan’s board must propose corrective action to the State legislature. Any resulting legislative change to benefits or funding could significantly affect the net pension liability. Resulting adjustments to the net pension liability would be effective when the changes are legally enforceable.

The proportionate share of each plan’s unfunded benefits is presented as a long-term *net pension asset/liability* on the accrual basis of accounting. Any liability for the contractually-required pension contribution outstanding at the end of the year is included in *intergovernmental payable* on both the accrual and modified bases of accounting.

Plan Description – Ohio Public Employees Retirement System (OPERS)

Plan Description – Library employees participate in the Ohio Public Employees Retirement System (OPERS). OPERS administers three separate pension plans. The traditional pension plan is a cost-sharing, multiple-employer defined benefit pension plan. The member-direct plan is a defined contribution plan and the combined plan is a cost-sharing, multiple-employer defined benefit pension plan with defined contribution features.

WORTHINGTON LIBRARIES
Worthington, Ohio
Notes to the Basic Financial Statements
For the Year Ended December 31, 2017

NOTE 11 – DEFINED BENEFIT PENSION PLANS (continued)

OPERS provides retirement, disability, survivor and death benefits, and annual cost of living adjustments to members of the traditional and combined plans. Authority to establish and amend benefits is provided by Chapter 145 of the Ohio Revised Code. OPERS issues a stand-alone financial report that includes financial statements, required supplementary information and detailed information about OPERS' fiduciary net position that may be obtained by visiting <http://www.opers.org/financial/reports.shtml>, by writing to the Ohio Public Employees Retirement System, 277 East Town Street, Columbus, Ohio 43215-4642, or by calling 800-222-7377.

Senate Bill (SB) 343 was enacted into law with an effective date of January 7, 2013. In the legislation, members were categorized into three groups with varying provisions of the law applicable to each group. The following table provides age and service requirements for retirement and the retirement formula applied to final average salary (FAS) for the three member groups as per the reduced benefits adopted by SB 343 (see OPERS CAFR referenced above the additional information):

Group A Eligible to retire prior to January 7, 2013 or five years after January 7, 2013	Group B 20 years of service credit prior to January 7, 2013 or eligible to retire ten years after January 7, 2013	Group C Members not in other Groups and members hired on or after January 7, 2013
State and Local	State and Local	State and Local
Age and Service Requirements: Age 60 with 60 months of service credit or Age 55 with 25 years of service credit	Age and Service Requirements: Age 60 with 60 months of service credit or Age 55 with 25 years of service credit	Age and Service Requirements: Age 57 with 25 years of service credit or Age 62 with 5 years of service credit
Traditional Plan Formula: 2.2% of FAS multiplied by years of service for the first 30 years and 2.5% for service years in excess of 30	Traditional Plan Formula: 2.2% of FAS multiplied by years of service for the first 30 years and 2.5% for service years in excess of 30	Traditional Plan Formula: 2.2% of FAS multiplied by years of service for the first 35 years and 2.5% for service years in excess of 35
Combined Plan Formula: 1.0% of FAS multiplied by years of service for the first 30 years and 1.25% for service years in excess of 30	Combined Plan Formula: 1.0% of FAS multiplied by years of service for the first 30 years and 1.25% for service years in excess of 30	Combined Plan Formula: 1.0% of FAS multiplied by years of service for the first 35 years and 1.25% for service years in excess of 35

Final average Salary (FAS) represents the average of the three highest years of earnings over a member's career for Groups A and B. Group C is based on the average of the five highest years of earnings over a member's career.

Members who retire before meeting the age and years of service credit requirement for unreduced benefits receive a percentage reduction in the benefit amount.

When a benefit recipient has received benefits for 12 months, an annual cost of living adjustment (COLA) is provided. For members retiring under the Combined Plan, an annual COLA will be provided on the defined benefit portion of their benefit. This COLA is calculated on the base retirement benefit at the date of retirement and is not compounded. For those retiring prior to January 7, 2013, the COLA will continue to be a 3 percent simple annual COLA. For those retiring subsequent to January 7, 2013, beginning in calendar year 2019, the COLA will be based on the average percentage increase in the Consumer Price Index, capped at 3 percent.

WORTHINGTON LIBRARIES
Worthington, Ohio
Notes to the Basic Financial Statements
For the Year Ended December 31, 2017

NOTE 11 – DEFINED BENEFIT PENSION PLANS (continued)

Funding Policy – The Ohio Revised Code (ORC) provides statutory authority for member and employer contributions as follows:

	<u>State and Local</u>
2017 Statutory Maximum Contribution Rates	
Employer	14.0 %
Employee	10.0 %
2017 Actual Contribution Rates	
Employer:	
Pension	13.0 %
Post-employment Health Care Benefits	<u>1.0</u>
Total Employer	<u>14.0 %</u>
Employee	<u>10.0 %</u>

Employer contribution rates are actuarially determined and are expressed as a percentage of covered payroll. The Library’s contractually required contribution was \$652,729 for 2017. Of this amount, \$27,815 is reported as an intergovernmental payable.

Pension Assets, Pension Liabilities, Pension Expense, and Deferred Outflows of Resources and Deferred Inflows of Resources Related to Pensions

The net pension asset and net pension liability for OPERS was measured as of December 31, 2016, and the total pension liability used to calculate the net pension asset/liability was determined by an actuarial valuation as of that date. The Library’s proportion of the net pension asset/liability was based on the Library’s share of contributions to the pension plan relative to the contributions of all participating entities. Following is information related to the proportionate share and pension expense:

	<u>OPERS Traditional Plan</u>	<u>OPERS Combined Plan</u>	<u>Total</u>
Proportionate Share of the Net Pension Liability/(Asset)	\$7,302,535	(\$86,093)	\$7,216,442
Proportion of the Net Pension Liability/(Asset)	0.032158%	0.15469%	
Pension Expense	\$1,498,004	\$209,710	\$1,707,714

WORTHINGTON LIBRARIES
Worthington, Ohio
Notes to the Basic Financial Statements
For the Year Ended December 31, 2017

NOTE 11 – DEFINED BENEFIT PENSION PLANS (continued)

As of December 31, 2017, the Library reported deferred outflows of resources and deferred inflows of resources related to pensions from the following sources:

	OPERS Traditional Plan	OPERS Combined Plan	Total
Deferred Outflows of Resources			
Differences between expected and actual experience	\$9,898	\$0	\$9,898
Changes of assumptions	1,158,272	20,982	1,179,254
Net difference between projected and actual earnings on pension plan investments	1,087,516	21,006	1,108,522
Change in proportionate share	133,003	1,720	134,723
Library contributions subsequent to the measurement date	570,147	82,582	652,729
Total Deferred Outflows of Resources	<u>\$2,958,836</u>	<u>\$126,290</u>	<u>\$3,085,126</u>
Deferred Inflows of Resources			
Differences between expected and actual experience	\$43,460	\$44,032	\$87,492
Change in proportionate share	-	2,264	2,264
Total Deferred Inflows of Resources	<u>\$43,460</u>	<u>\$46,296</u>	<u>\$89,756</u>

A total of \$652,729 reported as deferred outflows of resources related to pension resulting from the Library's contributions subsequent to the measurement date will be recognized as pension expense and a reduction of the net pension liability in the year ending December 31, 2018. Other amounts reported as deferred outflows of resources and deferred inflows of resources related to pension will be recognized in pension expense as follows:

	OPERS Traditional Plan	OPERS Combined Plan	Total
Year Ending December 31:			
2018	\$995,467	\$4,034	\$999,501
2019	991,682	\$4,033	995,715
2020	389,957	\$3,127	393,084
2021	(31,877)	(\$5,468)	(37,345)
2022	-	(3,254)	(3,254)
Thereafter	-	(5,060)	(5,060)
Total	<u>\$2,345,229</u>	<u>(\$2,588)</u>	<u>\$2,342,641</u>

WORTHINGTON LIBRARIES
Worthington, Ohio
Notes to the Basic Financial Statements
For the Year Ended December 31, 2017

NOTE 11 – DEFINED BENEFIT PENSION PLANS (continued)

Actuarial Assumptions – OPERS

Actuarial valuations of an ongoing plan involve estimates of the values of reported amounts and assumptions about the probability of occurrence of events far into the future. Examples include assumptions about future employment, mortality, and cost trends. Actuarially determined amounts are subject to continual review or modification as actual results are compared with past expectations and new estimates are made about the future.

Projections of benefits for financial reporting purposes are based on the substantive plan (the plan as understood by the employers and plan members) and include the types of benefits provided at the time of each valuation. In 2016, the OPERS Board’s actuarial consultants conducted an experience study for the period 2011 through 2015, comparing assumptions to actual results. The experience study incorporated both a historical review and forward-looking projections to determine the appropriate set of assumptions to keep the plan on a path toward full funding. Information from this study led to changes in both demographic and economic assumptions, with the most notable being a reduction in the actuarially assumed rate of return from 8 percent down to 7.5 percent for the defined benefit investments. Key methods and assumptions used in the December 31, 2016 actuarial valuation, reflecting experience study results, are presented below.

	Traditional Plan	Combined Plan
Wage Inflation	3.25 percent	3.25 percent
Future Salary Increases, including inflation	3.25 to 10.75 percent including wage inflation	3.25 to 8.25 percent including wage inflation
COLA or Ad Hoc COLA	Pre-1/7/13 Retirees: 3 percent, simple Post-1/7/13 Retirees: 3 percent simple through 2018, then 2.15 percent simple	Pre-1/7/13 Retirees: 3 percent, simple Post-1/7/13 Retirees: 3 percent simple through 2018, then 2.15 percent simple
Investment Rate of Return	7.5 percent	7.5 percent

Mortality rates were based on the RP-2014 Healthy Annuitant mortality table. For males, the tables were adjusted for mortality improvement back to the observation period base of 2006 and then established the base year as 2015. For females, the tables were adjusted for mortality improvement back to the observation period base year of 2006 and then established the base year as 2010. The mortality rates used in evaluating disability allowances were based on the RP-2014 Disabled mortality tables, adjusted for mortality improvement back to the observation base year of 2006 and then established the base year as 2015 for males and 2010 for females. Mortality rates for a particular calendar year, for both healthy and disabled retiree mortality tables, were determined by applying the MP-2015 mortality improvement scale to the above described tables.

The allocation of investment assets with the Defined Benefit portfolio is approved by the OPERS Board of Trustees as outlined in the annual investment plan. Plan assets are managed on a total return basis with a long-term objective of achieving and maintaining a fully funded status for the benefits provided through the defined benefit pension plans.

WORTHINGTON LIBRARIES
Worthington, Ohio
Notes to the Basic Financial Statements
For the Year Ended December 31, 2017

NOTE 11 – DEFINED BENEFIT PENSION PLANS (continued)

The following table displays the OPERS Board-approved asset allocation policy for 2016 and the long-term expected real rates of return:

Asset Class	Target Allocation	Weighted Average Long-Term Expected Real Rate of Return (Arithmetic)
Fixed Income	23.00 %	2.75 %
Domestic Equities	20.70	6.34
Real Estate	10.00	4.75
Private Equity	10.00	8.97
International Equities	18.30	7.95
Other investments	18.00	4.92
Total	100.00 %	5.66 %

The long-term rate of return on defined benefit investment assets was determined using a building-block method in which best-estimate ranges of expected future real rates of return are developed for each major asset class. These ranges are combined to produce the long-term expected real rate of return by weighting the expected future real rates of return by the target asset allocation percentage, adjusted for inflation.

During 2016, OPERS managed investments in four investment portfolios: the Defined Benefit portfolio, the 401(h) Health Care Trust portfolio, the 115 Health Care Trust portfolio and the Defined Contribution portfolio. The 401(h) Health Care Trust portfolio was closed as of June 30, 2016 and the net position transferred to the 115 Health Care Trust portfolio on July 1, 2016. The Defined Benefit portfolio contains the investment assets of the Traditional Pension Plan, the defined benefit component of the Combined Plan, the annuitized accounts of the Member-Directed Plan. The Defined Benefit portfolio historically included the assets of the Member-Directed retiree medical accounts funded through the VEBA Trust. However, the VEBA Trust was closed as of June 30, 2016 and the net position transferred to the 115 Health Care Trust portfolio on July 1, 2016. Within the Defined Benefit portfolio, contributions into the plans are all recorded at the same time, and benefit payments all occur on the first of the month. Accordingly, the money-weighted rate of return is considered to be the same for all plans within the portfolio. The annual money-weighted rate of return expressing investment performance for the Defined Benefit portfolio is 8.3 percent for 2016.

Discount Rate The discount rate used to measure the total pension liability was 7.5 percent. The projection of cash flows used to determine the discount rate assumed that contributions from plan members and those of the contributing employers are made at the statutorily required rates. Based on those assumptions, the pension plan’s fiduciary net position was projected to be available to make all projected future benefits payments of current plan members. Therefore, the long-term expected rate of return on pension plan investments was applied to all periods of projected benefit payments to determine the total pension liability.

WORTHINGTON LIBRARIES
Worthington, Ohio
Notes to the Basic Financial Statements
For the Year Ended December 31, 2017

NOTE 11 – DEFINED BENEFIT PENSION PLANS (continued)

Sensitivity of the Library’s Proportionate Share of the Net Pension (Asset)/Liability to Changes in the Discount Rate The following table presents the Library’s proportionate share of the net pension liability/(asset) calculated using the current period discount rate assumption of 7.5 percent, as well as what the Library’s proportionate share of the net pension liability/(asset) would be if it were calculated using a discount rate that is one-percentage-point lower (6.5 percent) or one-percentage-point higher (8.5 percent) than the current rate:

	1% Decrease (6.50%)	Discount Rate (7.50%)	1% Increase (8.50%)
Library's proportionate share of the net pension liability/(asset)			
Traditional Plan	\$11,156,253	\$7,302,535	\$4,091,141
Combined Plan	\$6,187	(\$86,093)	(\$157,779)

NOTE 12 – POST-EMPLOYMENT BENEFITS

Plan Description – Ohio Public Employees Retirement System (OPERS) administers three separate pension plans: The Traditional Pension Plan—a cost-sharing, multiple-employer defined benefit pension plan; the Member-Directed Plan—a defined contribution plan; and the Combined Plan—a cost-sharing, multiple-employer defined benefit pension plan that has elements of both a defined benefit and defined contribution plan.

OPERS maintains a cost-sharing, multiple-employer defined benefit post-employment health care trust, which funds multiple healthcare plans including medical coverage, prescription drug coverage and deposits to a Health Reimbursement Arrangement to qualifying benefit recipients of both the Traditional Pension and the Combined plans. Members of the Member-Directed Plan do not qualify for ancillary benefits, including OPERS sponsored health care coverage. OPERS funds a Retiree Medical Account (RMA) so participants can be reimbursed for qualified medical expenses from their vested RMA balance.

In order to qualify for healthcare coverage, age-and-service retirees under the Traditional Pension and Combined plans must have 20 or more years of qualifying Ohio service credit. Healthcare coverage for disability benefit recipients and qualified survivor benefit recipients is available. The healthcare coverage provided by OPERS meets the definition of an other postemployment benefit (OPEB) as described in GASB Statement 45. Please see the Plan Statement in the OPERS 2016 CAFR for details.

The Ohio Revised Code permits, but does not require, OPERS to provide health care to its eligible benefit recipients. Authority to establish and amend health care coverage is provided to the OPERS Board in Chapter 145 of the Ohio Revised Code.

OPERS issues a stand-alone financial report. Interested parties may obtain a copy by visiting <https://www.opers.org/financial/reports.shtml#CAFR>, by writing to OPERS, 277 East Town Street, Columbus, OH 43215-4642, or by calling 614-222-5601 or 800-222-7377.

WORTHINGTON LIBRARIES
Worthington, Ohio
Notes to the Basic Financial Statements
For the Year Ended December 31, 2017

NOTE 12 – POST-EMPLOYMENT BENEFITS (continued)

Funding Policy – The Ohio Revised Code provides the statutory authority requiring public employers to fund health care through their contributions to OPERS. A portion of each employer’s contribution to OPERS is set aside to fund OPERS health care plans.

Employer contribution rates are expressed as a percentage of the earnable salary of active members. In 2017, the Library contributed at a rate of 14.0 percent of earnable salary. This is the maximum employer contribution rate permitted by the Ohio Revised Code. Active member contributions do not fund health care.

Each year, the OPERS Board of Trustees determines the portion of the employer contribution rate that will be set aside to fund healthcare plans. The portion of employer contributions allocated to health care for members of the Traditional Pension Plan and Combined Plan was 2.0% during calendar year 2016. As recommended by OPERS’ actuary, the portion of employer contributions allocated to health care beginning January 1, 2017 decreased to 1.0% for both plans. The board is also authorized to establish rules for the retiree or their surviving beneficiaries to pay a portion of the health care provided. Payment amounts vary depending on the number of covered dependents and the coverage selected. The employer contribution as a percentage of covered payroll deposited to the VEBA for participants in the Member-Directed Plan for 2017 was 4.0%.

The Library’s contributions allocated to fund post-employment health care benefits for the years ended December 31, 2017, 2016, and 2015 were \$50,210, \$97,604, and \$94,507, respectively. For 2017, 96 percent has been contributed with the balance being reported as an intergovernmental payable. The full amount has been contributed for 2016 and 2015.

NOTE 13 – OTHER EMPLOYEE BENEFITS

Insurance Benefits

The Library provides health and vision coverage to all employees with designated position hours of at least 20 hours per week through Anthem and Vision Service Plan, respectively. The Library provides dental coverage to all employees with designated position hours of at least 20 hours per week through Delta Dental. An Employee Assistance Program through MATRIX is also available.

Compensated Absences

Accumulated Unpaid Vacation

Library employees earn vacation leave at varying rates based upon length of service and position hours. Vacation can accumulate to a maximum of one and one-half times the employee’s current annual accrual calculated on the designated position hours. Vacation hours earned in excess of that amount are forfeited. If an employee with at least one year of service terminates employment, 100 percent of unused vacation leave is paid. Employees who leave with less than one year of service forfeit any accumulated unused vacation time. Any vacation time used in the first year must be repaid if an employee resigns with less than one year of service.

WORTHINGTON LIBRARIES
 Worthington, Ohio
 Notes to the Basic Financial Statements
 For the Year Ended December 31, 2017

NOTE 13 – OTHER EMPLOYEE BENEFITS (continued)

Accumulated Unpaid Sick Leave

Library employees earn sick leave at the rate of four and six tenths hours per 74 hours of service. Sick leave is cumulative up to 25.9 times the designated position’s number of hours worked per week (i.e., 37 hours times 25.9 = 960). Hours earned in excess of the maximum are forfeited. Employees who voluntarily terminate employment after 10 years of service with the Library will be paid 25 percent of their accumulated sick leave balance, up to a maximum payment of 240 hours. In the case of death, an employee’s estate is paid 50 percent of accumulated available sick leave hours if the employee had 10 years of service with the Library.

Accumulated Unpaid Floating Holidays

Library employees earn floating holiday pay based on position hours for Martin Luther King, Jr. Day, Presidents’ Day and Veterans’ Day, holidays in which the Library is open. These hours can be scheduled as time off with pay much like vacation and must be used before vacation time is used.

An employee may accumulate no more than three floating holidays. If an employee terminates employment, 100 percent of unused floating holiday leave is paid.

Deferred Compensation

Library employees may participate in the Ohio Public Employees Deferred Compensation Plan. This plan was created in accordance with Internal Revenue Code Section 457. Participation is on a voluntary payroll deduction basis. The plan permits deferral of compensation until future years. According to the plan, the deferred compensation is not available until termination, retirement, death, or an unforeseeable emergency.

NOTE 14 – LONG-TERM OBLIGATIONS

The changes in the Library’s long-term obligations during 2017 were as follows:

	Amount Outstanding 12/31/2016	Additions	Deletions	Amount Outstanding 12/31/2017	Amounts Due in One Year
Net Pension Liability	5,402,675	1,899,860	-	7,302,535	-
Compensated Absences	156,551	28,883	(37,971)	147,463	6,255
	<u>5,559,226</u>	<u>1,928,743</u>	<u>(37,971)</u>	<u>7,449,998</u>	<u>6,255</u>

The net pension liability and compensated absences will be paid from General Fund.

WORTHINGTON LIBRARIES
Worthington, Ohio
Notes to the Basic Financial Statements
For the Year Ended December 31, 2017

NOTE 15 – INTERFUND TRANSFERS

Interfund transfers at December 31, 2017 were as follows:

	<u>Transfers-In</u>	<u>Transfers-Out</u>
General Fund	\$ -	\$ 1,120,143
Nonmajor Governmental Funds	1,120,143	-
Total Transfers	<u>\$ 1,120,143</u>	<u>\$ 1,120,143</u>

The Library transferred cash from the General Fund to Nonmajor Governmental Funds to cover miscellaneous capital projects, maintenance and repairs. All transfers were made in accordance with Ohio Revised Code Sections 5705.14, 5705.15 and 5705.16.

NOTE 16 – CONTINGENCIES

Grants

The Library receives financial assistance from State agencies in the form of grants. Disbursing grant funds generally requires compliance with terms and conditions specified in the grant agreements and are subject to audit. Any disallowed claims resulting from such audits could become a liability. However, in the opinion of management, any such disallowed claims through December 31, 2017 will not have a material adverse effect on the Library.

Litigation

The Library may be a defendant in several lawsuits, the outcome of which cannot be determined. Any judgment against the Library would not have a material adverse effect on the Library’s financial position.

NOTE 17 – OPERATING LEASES

On December 12, 2007, the Library entered into an agreement with Worthington Park LLC to lease a storefront unit in the Worthington Park Shopping Center for the purpose of the operation of the Library. The original term of the lease was a five-year term with an option to extend for an additional five-year term. The annual rent for the original and operational renewal terms was \$42,240 and \$47,520, respectively. In accordance with terms of the lease agreement, the Library also had to share in common area maintenance, real estate taxes and insurance expenses of the Worthington Park Shopping Center.

During 2013, the lease was amended in order to expand the leased facilities to add two more units, with amended lease payments beginning in 2014. The amended lease is for a ten-year term with an option to extend for an additional five-year term. The annual rent for the initial ten-year is \$88,320 for first five years and \$104,160 for the remaining five years. The annual rent for the renewal term is \$117,180. In accordance with terms of the amended lease agreement, the Library will continue to share in common area maintenance, real estate taxes and insurance expenses of the Worthington Park Shopping Center.

WORTHINGTON LIBRARIES
Worthington, Ohio
Notes to the Basic Financial Statements
For the Year Ended December 31, 2017

NOTE 17 – OPERATING LEASES (continued)

During 2017, lease payments, excluding the share in common area maintenance, real estate taxes, and insurance expenses totaled \$88,320 and future minimum lease payments, excluding the optional renewal term, are as follows:

<u>Year Ending</u>	<u>Amount</u>
2018	88,320
2019	104,160
2020	104,160
2021	104,160
2022	104,160
2023	<u>104,160</u>
Total	<u>\$ 609,120</u>

NOTE 18 – SIGNIFICANT COMMITMENTS

Encumbrances

Encumbrances are commitments related to unperformed contracts for goods or services. Encumbrance accounting is utilized to the extent necessary to assure effective budgetary control and accountability and to facilitate effective cash planning and control. At year-end, the amount of encumbrances expected to be honored upon performance by the vendor in the next fiscal year were as follows:

General Fund	\$ 496,135
Other Governmental Funds	<u>77,149</u>
Total	<u>\$ 573,284</u>

WORTHINGTON LIBRARIES
Worthington, Ohio
Notes to the Basic Financial Statements
For the Year Ended December 31, 2017

NOTE 19 – CHANGES IN ACCOUNTING PRINCIPLES

For 2017, the Library implemented the following accounting standards:

GASB Statement No. 73 *Accounting and Financial Reporting for Pensions and Related Assets that are not within the Scope of GASB Statement 68, and Amendments to Certain Provisions of GASB Statements 67 and 68*, which improves the usefulness of information about pensions included in the general purpose external financial reports of state and local governments for making decisions and assessing accountability. The implementation of this statement did not have a significant effect on the financial statements of the Library.

GASB Statement No. 74 *Financial Reporting for Postemployment Benefit Plans other than Pension Plans* which improves the usefulness of information about postemployment benefits other than pensions included in the general purpose external financial reports of state and local governments for making decisions and assessing accountability. The implementation of this statement did not have a significant effect on the financial statements of the Library.

GASB Statement No. 78 *Pensions Provided Through Certain Multiple-Employer Defined Benefit Pension Plans*, which amends the scope and applicability of GASB Statement No. 68 to exclude pensions provided to employees of state or local governmental employers through a cost-sharing multiple-employer defined benefit pension plan that (1) is not a state or local governmental pension plan, (2) is used to provide defined benefit pensions both to employees of state or local governmental employers and to employees of employers that are not state or local governmental employers, and (3) has no predominant state or local governmental employer. The implementation of this statement did not have a significant effect on the financial statements of the Library.

GASB Statement No. 80 *Blending Requirements for Certain Component Units – an Amendment of GASB Statement No. 14*, which improves financial reporting by clarifying the financial statement presentation requirements for certain component units. The implementation of this statement did not have an effect on the financial statements of the Library.

GASB Statement No. 81 *Irrevocable Split-Interest Agreements*, which improves financial reporting for irrevocable split-interest agreements by providing recognition and measurement guidance for situations in which a government is a beneficiary of the agreement. The implementation of this statement did not have an effect on the financial statements of the Library.

GASB Statement No. 82 *Pension Issues – An Amendment of GASB Statements No. 67, No. 68, and No. 73*, which addresses issues regarding (1) the presentation of payroll-related measures in required supplementary information, (2) the selection of assumptions and the treatment of deviations from the guidance in an Actuarial Standard of Practice for financial reporting purposes, and (3) the classification of payments made by employers to satisfy employee (plan member) contribution requirements. The implementation of this statement did not have an effect on the financial statements of the Library.

This page intentionally left blank.

Worthington Libraries
Required Supplementary Information
Schedule of Library's Proportionate Share of the Net Pension (Asset)/Liability
Ohio Public Employees Retirement System

Last Four Years (1)

	<u>2017</u>	<u>2016</u>	<u>2015</u>	<u>2014</u>
Library's Proportion of the Net Pension (Asset)/Liability				
Traditional Plan	0.032158%	0.031191%	0.0300039%	0.0300039%
Combined Plan	0.154685%	0.14933%	0.1568350%	0.1568350%
Library's Proportionate Share of the Net Pension (Asset)/Liability				
Traditional Plan	\$ 7,302,535	\$ 5,402,675	\$ 3,618,806	\$ 3,537,069
Combined Plan	\$ (86,093)	\$ (72,667)	\$ (60,385)	\$ (16,457)
Library's Covered-Employee Payroll	\$ 4,880,214	\$ 4,725,332	\$ 4,268,292	\$ 4,263,223
Library's Proportionate Share of the Net Pension (Asset)/Liability as a Percentage of its Covered-Employee Payroll	147.87%	112.80%	83.37%	82.58%
Plan Fiduciary Net Position as a Percentage of the Total Pension (Asset)/Liability				
Traditional Plan	77.25%	81.08%	86.45%	86.36%
Combined Plan	116.55%	116.90%	114.83%	104.56%

(1) Information prior to 2014 is not available. Schedule is intended to show information for 10 years. Additional years will be displayed as they become available.

Amounts presented as of the Library's measurement date, which is the prior year-end.

Worthington Libraries
Required Supplementary Information
Schedule of Library Contributions
Ohio Public Employees Retirement System

Last Five Years (1)

	<u>2017</u>	<u>2016</u>	<u>2015</u>	<u>2014</u>	<u>2013</u>
Contractually Required Contribution	\$ 652,729	\$ 585,626	\$ 567,040	\$ 512,195	\$ 554,219
Contributions in relation to the contractually required contribution	<u>\$ 652,729</u>	<u>\$ 585,626</u>	<u>\$ 567,040</u>	<u>\$ 512,195</u>	<u>\$ 554,219</u>
Contribution deficiency (excess)	<u>\$ -</u>	<u>\$ -</u>	<u>\$ -</u>	<u>\$ -</u>	<u>\$ -</u>
Covered-employee payroll	\$ 5,020,995	\$ 4,880,214	\$ 4,725,332	\$ 4,268,292	\$ 4,263,223
Contributions as a percentage of covered-employee payroll	13.00%	12.00%	12.00%	12.00%	13.00%

(1) Information prior to 2013 is not available. Schedule is intended to show information for 10 years. Additional years will be displayed as they become available.

WORTHINGTON LIBRARIES
Worthington, Ohio
Notes to the Required Supplementary Information
For the Year Ended December 31, 2017

Ohio Public Employees Retirement System

Changes of benefit terms. There were no significant changes of benefit terms in 2017.

Changes of assumptions. Amounts reported in 2017 reflect changes in both demographic and economic assumptions, with the most notable being a reduction in the actuarially assumed rate of return from 8.0% down to 7.5%, for the defined benefit investments.

COMBINING FINANCIAL STATEMENTS
AND
INDIVIDUAL FUND SCHEDULES

This page intentionally left blank.

WORTHINGTON LIBRARIES
WORTHINGTON, OHIO
Nonmajor Fund Descriptions

Special Revenue Funds

Special revenue funds are used to account for and report the proceeds of specific revenue sources that are restricted or committed to expenditure for specific purposes other than debt service or capital projects.

Nonmajor Special Revenue Fund

Friends Foundation Fund

This fund is used to account for monies that are restricted and received from the Friends Foundation of Worthington Libraries to support children, teen, and adult programming, along with staff support.

The following fund is included in the General Fund (GAAP basis), but has a separate legally adopted budget (budget basis):

Termination Benefits Fund

This fund used to account for monies that are set aside for 27th payroll and payments to employees upon separation from employment.

Capital Projects Funds

Capital projects funds are used to account for and report financial resources that are restricted, committed, or assigned to expenditure for capital outlays including the acquisition or construction of major capital facilities and other capital assets.

Nonmajor Capital Projects Funds

Building Fund

To account for and report expenditures related to building projects, including improvements to the Library and construction of new facilities which are financed by transfers from the General Fund.

Technology Fund

To account for and report expenditures related to purchases of computing and network technology as well as other office equipment which are financed by transfers from the General Fund.

WORTHINGTON LIBRARIES
Worthington, Ohio
Combining Balance Sheet
Nonmajor Governmental Funds
December 31, 2017

	Nonmajor Special Revenue Fund	Nonmajor Capital Projects Funds	Total Nonmajor Governmental Totals
Assets:			
Equity in Pooled Cash and Investments	\$ 9,794	\$ 1,381,692	\$ 1,391,486
Prepaid Items	-	59,855	59,855
Total Assets	<u>\$ 9,794</u>	<u>\$ 1,441,547</u>	<u>\$ 1,451,341</u>
Liabilities:			
Accounts Payable	\$ -	\$ 3,040	\$ 3,040
Total Liabilities	<u>-</u>	<u>3,040</u>	<u>3,040</u>
Fund Balances:			
Nonspendable:			
Prepaid Items	-	59,855	59,855
Restricted for:			
Public Services and Programs	9,794	-	9,794
Committed for:			
Future Facility Expansion	-	377,883	377,883
Assigned for:			
Capital Outlays	-	1,000,769	1,000,769
Total Fund Balances	<u>9,794</u>	<u>1,438,507</u>	<u>1,448,301</u>
Total Liabilities and Fund Balance	<u>\$ 9,794</u>	<u>\$ 1,441,547</u>	<u>\$ 1,451,341</u>

WORTHINGTON LIBRARIES
Worthington, Ohio
Combining Statement of Revenues, Expenditures and Changes in Fund Balances
Nonmajor Governmental Funds
For the Year Ended December 31, 2017

	Nonmajor Special Revenue Fund	Nonmajor Capital Projects Funds	Total Nonmajor Governmental Totals
Revenues:			
Contributions, Gifts and Donations	\$ 47,882	\$ -	\$ 47,882
Total Revenues	<u>47,882</u>	<u>-</u>	<u>47,882</u>
Expenditures:			
Current:			
Library Services:			
Public Services and Programs	56,038	-	56,038
Support Services:			
Information Services Support	-	33,462	33,462
Capital Outlay	-	310,655	310,655
Total Expenditures	<u>56,038</u>	<u>344,117</u>	<u>400,155</u>
Excess (Deficiency) of Revenues Over (Under) Expenditures	(8,156)	(344,117)	(352,273)
Other Financing Sources:			
Transfers In	-	1,120,143	1,120,143
Total Other Financing Sources	<u>-</u>	<u>1,120,143</u>	<u>1,120,143</u>
Net Change in Fund Balances	(8,156)	776,026	767,870
Fund Balance at Beginning of Year	17,950	662,481	680,431
Fund Balance at End of Year	<u>\$ 9,794</u>	<u>\$ 1,438,507</u>	<u>\$ 1,448,301</u>

WORTHINGTON LIBRARIES
Worthington, Ohio
Combining Balance Sheet
Nonmajor Capital Projects Funds
December 31, 2017

	Building Fund	Technology Fund	Total Nonmajor Capital Projects Funds
Assets:			
Equity in Pooled Cash and Investments	\$ 1,262,321	\$ 119,371	\$ 1,381,692
Prepaid Items	-	59,855	59,855
Total Assets	<u>\$ 1,262,321</u>	<u>\$ 179,226</u>	<u>\$ 1,441,547</u>
Liabilities:			
Accounts Payable	\$ -	\$ 3,040	\$ 3,040
Total Liabilities	<u>-</u>	<u>3,040</u>	<u>3,040</u>
Fund Balances:			
Nonspendable:			
Prepaid Items	-	59,855	59,855
Committed for:			
Future Facility Expansion	377,883	-	377,883
Assigned for:			
Capital Outlays	884,438	116,331	1,000,769
Total Fund Balances	<u>1,262,321</u>	<u>176,186</u>	<u>1,438,507</u>
Total Liabilities, Deferred Inflows, and Fund Balances	<u>\$ 1,262,321</u>	<u>\$ 179,226</u>	<u>\$ 1,441,547</u>

WORTHINGTON LIBRARIES

Worthington, Ohio

Combining Statement of Revenues, Expenditures and Changes in Fund Balances

Nonmajor Capital Projects Funds

For the Year Ended December 31, 2017

	Building Fund	Technology Fund	Total Nonmajor Capital Projects Funds
Expenditures:			
Current:			
Support Services:			
Information Services Support	-	33,462	33,462
Capital Outlay	96,951	213,704	310,655
Total Expenditures	<u>96,951</u>	<u>247,166</u>	<u>344,117</u>
Deficiency of Revenues			
Under Expenditures	(96,951)	(247,166)	(344,117)
Other Financing Sources:			
Transfers In	870,972	249,171	1,120,143
Total Other Financing Sources	<u>870,972</u>	<u>249,171</u>	<u>1,120,143</u>
Net Change in Fund Balances	774,021	2,005	776,026
Fund Balance at Beginning of Year	488,300	174,181	662,481
Fund Balance at End of Year	<u>\$ 1,262,321</u>	<u>\$ 176,186</u>	<u>\$ 1,438,507</u>

WORTHINGTON LIBRARIES
Worthington, Ohio
Statement of Revenues, Expenditures and Changes
in Fund Balances - Budget (Non-GAAP Basis) and Actual
General Fund
For the Year Ended December 31, 2017

	Original Budget	Final Budget	Actual	Variance (Over)/Under
Revenues				
Property Taxes	\$ 7,746,384	\$ 7,746,384	\$ 7,751,120	\$ 4,736
Intergovernmental	2,822,325	2,837,063	2,714,837	(122,226)
Patron Fines and Fees	108,000	108,000	113,103	5,103
Investment Earnings	100,000	160,000	278,464	118,464
Services Provided to Other Entities	1,027,000	1,011,597	1,013,195	1,598
Contributions, Gifts, and Donations	-	-	8,626	8,626
Miscellaneous	-	-	16,924	16,924
Total Revenues	<u>11,803,709</u>	<u>11,863,044</u>	<u>11,896,269</u>	<u>33,225</u>
Expenditures				
Library Services:				
Public Services and Programs				
Personal Services	4,249,212	4,271,013	4,046,285	224,728
Materials and Supplies	9,849	9,900	6,746	3,154
Contractual Services	34,738	34,917	22,572	12,345
Purchased Library Services	10,549	-	-	-
Other	690	695	64	631
Total Public Services and Programs	<u>4,305,038</u>	<u>4,316,525</u>	<u>4,075,667</u>	<u>240,858</u>
Collection Development and Processing				
Personal Services	464,440	466,821	462,963	3,858
Materials and Supplies	27,436	27,570	20,095	7,475
Contractual Services	174,903	175,746	152,518	23,228
Purchased Library Services	1,942,312	1,962,389	1,788,498	173,891
Total Collection Development and Processing	<u>2,609,091</u>	<u>2,632,526</u>	<u>2,424,074</u>	<u>208,452</u>
Support Services:				
Facilities Operation and Maintenance				
Personal Services	76,315	76,706	75,979	727
Materials and Supplies	81,147	81,552	57,069	24,483
Contractual Services	1,068,640	1,073,917	907,746	166,171
Total Facilities Operation and Maintenance	<u>1,226,102</u>	<u>1,232,175</u>	<u>1,040,794</u>	<u>191,381</u>
Information Services Support				
Personal Services	583,540	586,533	584,602	1,931
Materials and Supplies	15,724	15,801	8,100	7,701
Contractual Services	115,687	116,276	110,183	6,093
Purchased Library Services	204,710	205,759	184,575	21,184
Total Information Services Support	<u>919,661</u>	<u>924,369</u>	<u>887,460</u>	<u>36,909</u>
Business Administration				
Personal Services	1,359,133	1,366,106	1,302,672	63,434
Materials and Supplies	44,892	45,088	34,077	11,011
Contractual Services	751,508	750,848	620,294	130,554
Purchased Library Services	139,028	139,630	68,291	71,339
Other	16,521	20,607	17,878	2,729
Total Business Administration	<u>2,311,082</u>	<u>2,322,279</u>	<u>2,043,212</u>	<u>279,067</u>

WORTHINGTON LIBRARIES
Worthington, Ohio
Statement of Revenues, Expenditures and Changes
in Fund Balances - Budget (Non-GAAP Basis) and Actual
General Fund
For the Year Ended December 31, 2017

	Original Budget	Final Budget	Actual	Variance (Over)/Under
Capital Outlay	69,684	61,384	24,565	36,819
Contingency	150,000	150,000	-	150,000
Total Expenditures	<u>11,590,658</u>	<u>11,639,258</u>	<u>10,495,772</u>	<u>1,143,486</u>
Excess of Revenues Over Expenditures	213,051	223,786	1,400,497	1,176,711
Other Financing Sources				
Transfers Out	<u>(1,746,630)</u>	<u>(1,293,468)</u>	<u>(1,293,467)</u>	<u>1</u>
Total Other Financing Sources	<u>(1,746,630)</u>	<u>(1,293,468)</u>	<u>(1,293,467)</u>	<u>1</u>
Net Change in Fund Balance	(1,533,579)	(1,069,682)	107,030	1,176,712
Fund Balances at Beginning of Year	21,415,440	21,415,440	21,415,440	-
Prior Year Encumbrances Appropriated	379,795	379,795	379,795	-
Fund Balances at End of Year	<u>\$ 20,261,656</u>	<u>\$ 20,725,553</u>	<u>\$ 21,902,265</u>	<u>\$ 1,176,712</u>

WORTHINGTON LIBRARIES
Worthington, Ohio
Schedule of Revenues, Expenditures and Changes
in Fund Balance - Budget (Non-GAAP Basis) and Actual
Friend's Foundation Fund
For the Year Ended December 31, 2017

	Original Budget	Final Budget	Actual	Variance (Over)/Under
Revenues				
Contributions, Gifts, and Donations	\$ 59,285	\$ 47,882	\$ 47,882	\$ -
Total Revenues	<u>59,285</u>	<u>47,882</u>	<u>47,882</u>	<u>-</u>
Expenditures				
Library Services:				
Public Services and Programs				
Materials and Supplies	28,758	28,758	23,924	4,834
Contractual Services	31,899	31,899	27,139	4,760
Other	1,175	1,175	1,165	10
Total Public Services and Programs	<u>61,832</u>	<u>61,832</u>	<u>52,228</u>	<u>9,604</u>
Net Change in Fund Balance	(2,547)	(13,950)	(4,346)	9,604
Fund Balances at Beginning of Year	11,403	11,403	11,403	-
Prior Year Encumbrances Appropriated	2,547	2,547	2,547	-
Fund Balances at End of Year	<u>\$ 11,403</u>	<u>\$ -</u>	<u>\$ 9,604</u>	<u>\$ 9,604</u>

WORTHINGTON LIBRARIES
Worthington, Ohio
Schedule of Revenues, Expenditures and Changes
in Fund Balance - Budget (Non-GAAP Basis) and Actual
Termination Benefits Fund
For the Year Ended December 31, 2017

	Original Budget	Final Budget	Actual	Variance (Over)/Under
Revenues				
Total Revenues	\$ -	\$ -	\$ -	\$ -
Expenditures				
Library Services:				
Public Services and Programs				
Personal Services	293,000	293,000	50,631	242,369
Total Public Services and Programs	293,000	293,000	50,631	242,369
Excess of Revenues Over (Under) Expenditures	(293,000)	(293,000)	(50,631)	242,369
Other Financing Sources				
Transfers In	293,000	173,324	173,324	-
Total Other Financing Sources	293,000	173,324	173,324	-
Net Change in Fund Balance	-	(119,676)	122,693	242,369
Fund Balances at Beginning of Year	119,676	119,676	119,676	-
Prior Year Encumbrances Appropriated	-	-	-	-
Fund Balances at End of Year	\$ 119,676	\$ -	\$ 242,369	\$ 242,369

WORTHINGTON LIBRARIES
Worthington, Ohio
Schedule of Revenues, Expenditures and Changes
in Fund Balance - Budget (Non-GAAP Basis) and Actual
Building Fund
For the Year Ended December 31, 2017

	Original Budget	Final Budget	Actual	Variance (Over)/Under
Revenues				
Total Revenues	\$ -	\$ -	\$ -	\$ -
Expenditures				
Capital Outlay	1,238,701	1,359,271	140,669	1,218,602
Total Expenditures	1,238,701	1,359,271	140,669	1,218,602
Excess of Revenues Over (Under) Expenditures	(1,238,701)	(1,359,271)	(140,669)	1,218,602
Other Financing Sources				
Transfers In	1,148,730	870,972	870,972	-
Total Other Financing Sources	1,148,730	870,972	870,972	-
Net Change in Fund Balance	(89,971)	(488,299)	730,303	1,218,602
Fund Balances at Beginning of Year	488,300	488,300	488,300	-
Prior Year Encumbrances Appropriated	-	-	-	-
Fund Balances at End of Year	<u>\$ 398,329</u>	<u>\$ 1</u>	<u>\$ 1,218,603</u>	<u>\$ 1,218,602</u>

WORTHINGTON LIBRARIES
Worthington, Ohio
Schedule of Revenues, Expenditures and Changes
in Fund Balance - Budget (Non-GAAP Basis) and Actual
Technology Fund
For the Year Ended December 31, 2017

	Original Budget	Final Budget	Actual	Variance (Over)/Under
Revenues				
Total Revenues	\$ -	\$ -	\$ -	\$ -
Expenditures				
Information Services Support				
Contractual Services	156,468	105,302	74,368	30,934
Total Information Services Support	156,468	105,302	74,368	30,934
Capital Outlay	206,900	315,606	260,411	55,195
Total Expenditures	363,368	420,908	334,779	86,129
Excess of Revenues Over (Under) Expenditures	(363,368)	(420,908)	(334,779)	86,129
Other Financing Sources				
Transfers In	304,900	249,171	249,171	-
Total Other Financing Sources	304,900	249,171	249,171	-
Net Change in Fund Balance	(58,468)	(171,737)	(85,608)	86,129
Fund Balances at Beginning of Year	113,270	113,270	113,270	-
Prior Year Encumbrances Appropriated	58,468	58,468	58,468	-
Fund Balances at End of Year	\$ 113,270	\$ 1	\$ 86,130	\$ 86,129

STATISTICAL SECTION

This page intentionally left blank.

WORTHINGTON LIBRARIES
WORTHINGTON, OHIO
Statistical Section

This part of Worthington Libraries’ comprehensive annual financial report presents detailed information as a context for understanding what the information in the financial statements, note disclosures, and required supplementary information says about the Library’s overall financial health.

<u>CONTENTS</u>	<u>PAGES</u>
Financial Trends	S4-S11
These schedules contain trend information to help the reader understand how the Library’s financial performance and well-being have changed over time.	
Revenue Capacity	S12-S17
These schedules contain information to help the reader assess the Library’s most significant local revenue source, property taxes.	
Debt Capacity	S18-S19
These schedules present information to help the reader assess the affordability of the Library’s current levels of outstanding debt and the Library’s ability to issue additional debt in the future.	
Demographic and Economic Information	S20-S23
These schedules offer demographic and economic indicators to help the reader understand the environment within which the Library’s financial activities take place.	
Operating information	S24-S27
These schedules contain service and infrastructure data to help the reader understand how the information in the Library’s financial report relates to the services the Library provides and the activities it performs.	

Sources: Unless otherwise noted, the information in these schedules is derived from the comprehensive annual financial reports for the relevant year.

Worthington Libraries
Worthington, Ohio
Net Position by Component
Last Ten Years
(accrual basis of accounting)

	<u>2008</u>	<u>2009</u>	<u>2010</u>	<u>2011</u>
Governmental Activities:				
Investment in Capital Assets	\$8,984,473	\$8,970,855	\$8,774,284	\$8,572,236
Restricted	0	0	6,882	9,380
Unrestricted	<u>11,421,601</u>	<u>12,923,458</u>	<u>15,956,351</u>	<u>17,692,236</u>
<i>Total Governmental</i> <i>Activities Net Position</i>	<u><u>\$20,406,074</u></u>	<u><u>\$21,894,313</u></u>	<u><u>\$24,737,517</u></u>	<u><u>\$26,273,852</u></u>

2012	2013	2014	2015	2016	2017
\$8,417,136	\$8,724,364	\$8,691,518	\$8,444,400	\$8,258,812	\$8,098,465
9,775	15,096	10,827	5,740	17,950	9,794
<u>19,211,984</u>	<u>19,667,762</u>	<u>19,919,057</u>	<u>19,014,868</u>	<u>20,748,634</u>	<u>21,025,843</u>
<u>\$27,638,895</u>	<u>\$28,407,222</u>	<u>\$28,621,402</u>	<u>\$27,465,008</u>	<u>\$29,025,396</u>	<u>\$29,134,102</u>

Worthington Libraries
Worthington, Ohio
Changes in Net Position
Last Ten Years
(accrual basis of accounting)

	2008	2009	2010	2011
Expenses:				
Library Services:				
Public Services and Programs	\$4,781,710	\$3,736,517	\$3,564,762	\$3,703,955
Collection Development and Processing	2,157,159	1,894,589	2,033,738	1,925,179
Support Services:				
Facilities Operations and Maintenance	737,269	723,911	762,761	1,049,211
Information Services Support	806,923	874,146	970,701	802,472
Business Administration	1,366,640	1,380,683	1,385,264	1,307,710
<i>Total Expenses</i>	9,849,701	8,609,846	8,717,226	8,788,527
Program Revenues:				
Charges for Services:				
Library Services:				
Public Services and Programs	1,101,263	1,074,701	1,011,213	1,277,288
Operating Grants, Contributions, and Interest	0	0	26,965	32,079
<i>Total Program Revenues</i>	1,101,263	1,074,701	1,038,178	1,309,367
<i>Net Expenses</i>	(8,748,438)	(7,535,145)	(7,679,048)	(7,479,160)
General Revenues:				
Governmental Activities:				
Property Taxes	6,286,953	6,005,216	6,149,886	6,071,068
Grants and Entitlements not				
Restricted to Specific Programs	3,405,030	2,961,045	4,276,501	2,916,271
Unrestricted Gifts and Donations	3,661	5,222	2,582	8,062
Earnings on Investments	276,844	33,384	15,674	9,405
Gain on Sale of Capital Assets	0	0	0	0
Miscellaneous	18,338	18,517	77,609	10,689
<i>Total General Revenues</i>	9,990,826	9,023,384	10,522,252	9,015,495
<i>Change in Net Position</i>	\$1,242,388	\$1,488,239	\$2,843,204	\$1,536,335

2012	2013	2014	2015	2016	2017
\$3,750,218	\$3,836,827	\$3,910,711	\$3,989,685	\$4,309,204	\$5,013,412
1,943,464	1,910,823	2,300,663	2,270,992	2,265,023	2,340,821
977,008	1,068,275	1,242,306	1,190,404	1,178,978	1,218,568
931,896	1,071,654	895,868	854,888	1,010,847	1,088,613
1,372,469	1,416,663	1,532,428	1,683,163	1,825,217	2,130,588
8,975,055	9,304,242	9,881,976	9,989,132	10,589,269	11,792,002
1,282,481	1,215,716	1,256,972	1,237,886	1,193,779	1,126,298
43,552	53,509	42,300	35,245	56,244	47,882
1,326,033	1,269,225	1,299,272	1,273,131	1,250,023	1,174,180
(7,649,022)	(8,035,017)	(8,582,704)	(8,716,001)	(9,339,246)	(10,617,822)
6,134,283	6,039,306	5,988,639	7,647,050	7,882,190	7,742,737
2,817,570	2,685,043	2,655,969	2,799,018	2,721,475	2,713,341
30,588	32,197	6,645	7,086	5,729	8,626
23,717	24,795	68,908	93,863	109,036	244,900
0	0	0	0	173,197	0
7,907	22,003	76,723	21,007	8,007	16,924
9,014,065	8,803,344	8,796,884	10,568,024	10,899,634	10,726,528
\$1,365,043	\$768,327	\$214,180	\$1,852,023	\$1,560,388	\$108,706

Worthington Libraries
Worthington, Ohio
Fund Balances - Governmental Funds
Last Ten Years
(modified accrual basis of accounting)

	2008	2009 (1)	2010	2011
General Fund				
Nonspendable	\$0	\$76,541	\$75,903	\$60,723
Committed	0	84,394	36,047	30,422
Assigned	0	202,535	151,805	211,559
Unassigned	0	10,710,135	13,884,037	15,790,758
Reserved	259,972	0	0	0
Unreserved	8,819,085	0	0	0
<i>Total General Fund</i>	<u>9,079,057</u>	<u>11,073,605</u>	<u>14,147,792</u>	<u>16,093,462</u>
All Other Governmental Funds				
Nonspendable	0	0	0	18,475
Restricted	0	56,053	6,882	9,380
Committed	0	0	0	0
Assigned	0	687,004	565,043	502,510
Reserved	120,405	0	0	0
Unreserved, Undesignated				
Reported in:				
Special Revenue Fund	103,610	0	0	0
Capital Projects Funds	843,998	0	0	0
<i>Total All Other Governmental Funds</i>	<u>1,068,013</u>	<u>743,057</u>	<u>571,925</u>	<u>530,365</u>
<i>Total Governmental Funds</i>	<u>\$10,147,070</u>	<u>\$11,816,662</u>	<u>\$14,719,717</u>	<u>\$16,623,827</u>

(1) Fund Balances were classified in accordance with GASB Statement No. 54

2012	2013	2014	2015	2016	2017
\$74,236	\$84,066	\$78,990	\$67,151	\$86,482	\$133,171
28,222	38,598	87,436	126,489	119,676	242,224
207,060	289,860	229,171	227,394	217,279	822,980
17,328,046	18,013,767	18,386,091	20,295,478	21,782,210	21,643,495
0	0	0	0	0	0
0	0	0	0	0	0
17,637,564	18,426,291	18,781,688	20,716,512	22,205,647	22,841,870
19,024	10,864	18,870	24,230	28,470	59,855
9,775	15,096	10,827	5,740	13,950	9,794
0	0	0	0	377,883	377,883
431,978	204,213	222,705	253,821	260,128	1,000,769
0	0	0	0	0	0
0	0	0	0	0	0
0	0	0	0	0	0
460,777	230,173	252,402	283,791	680,431	1,448,301
\$18,098,341	\$18,656,464	\$19,034,090	\$21,000,303	\$22,886,078	\$24,290,171

Worthington Libraries
Worthington, Ohio
Changes in Fund Balances - Governmental Funds
Last Ten Years
(modified accrual basis of accounting)

	2008	2009	2010	2011
Revenues:				
Property Taxes	\$6,278,922	\$5,949,645	\$6,183,063	\$6,113,964
Intergovernmental	3,515,269	3,142,356	4,110,971	3,025,083
Patron Fines and Fees	297,960	292,687	311,105	295,878
Services Provided to Other Entities	803,303	782,014	700,108	981,410
Contributions, Gifts, and Donations	3,661	5,222	29,547	40,141
Earnings on Investments	276,844	33,384	15,674	9,405
Miscellaneous	18,338	18,517	77,609	10,689
<i>Total Revenues</i>	<u>11,194,297</u>	<u>10,223,825</u>	<u>11,428,077</u>	<u>10,476,570</u>
Expenditures:				
Current:				
Library Services:				
Public Services and Programs	4,645,550	3,568,028	3,428,167	3,578,784
Collection Development and Processing	2,159,378	1,891,188	2,030,005	1,920,779
Support Services:				
Facilities Operations and Maintenance	711,032	686,709	718,718	709,612
Information Services Support	778,463	858,650	902,607	740,572
Business Administration	1,351,301	1,343,441	1,381,822	1,271,048
Capital Outlay	1,543,382	206,217	63,703	351,665
<i>Total Expenditures</i>	<u>11,189,106</u>	<u>8,554,233</u>	<u>8,525,022</u>	<u>8,572,460</u>
<i>Excess of Revenues Over Expenditures</i>	<u>5,191</u>	<u>1,669,592</u>	<u>2,903,055</u>	<u>1,904,110</u>
Other Financing Sources (Uses):				
Proceeds from Sale of Fixed Assets	0	0	0	0
Transfers - In	601,800	358,770	31,483	330,912
Transfers - Out	(601,800)	(358,770)	(31,483)	(330,912)
<i>Total Other Financing Sources (Uses)</i>	<u>0</u>	<u>0</u>	<u>0</u>	<u>0</u>
<i>Net Change in Fund Balances</i>	<u>\$5,191</u>	<u>\$1,669,592</u>	<u>\$2,903,055</u>	<u>\$1,904,110</u>

2012	2013	2014	2015	2016	2017
\$6,114,780	\$6,088,379	\$6,063,442	\$7,679,165	\$7,831,784	\$7,755,427
2,782,995	2,703,995	2,692,035	2,741,190	2,709,140	2,707,421
262,858	223,001	224,929	185,450	153,672	113,103
1,019,623	992,715	1,032,043	1,052,436	1,040,107	1,013,195
74,140	85,706	48,945	42,331	61,973	56,508
23,717	24,795	59,124	95,084	106,181	239,366
7,907	22,003	33,382	19,007	8,007	16,924
10,286,020	10,140,594	10,153,900	11,814,663	11,910,864	11,901,944
3,618,414	3,671,463	3,747,951	3,883,496	3,936,281	4,160,061
1,941,337	1,907,258	2,286,637	2,261,148	2,253,948	2,251,634
722,816	1,021,383	820,597	895,192	956,310	950,580
868,779	1,012,244	825,556	774,190	936,408	896,875
1,348,101	1,399,449	1,504,000	1,689,898	1,813,322	1,903,481
312,059	570,674	643,994	346,526	509,120	335,220
8,811,506	9,582,471	9,828,735	9,850,450	10,405,389	10,497,851
1,474,514	558,123	325,165	1,964,213	1,505,475	1,404,093
0	0	52,461	2,000	380,300	0
237,915	695,516	668,219	391,695	932,630	1,120,143
(237,915)	(695,516)	(668,219)	(391,695)	(932,630)	(1,120,143)
0	0	52,461	2,000	380,300	0
\$1,474,514	\$558,123	\$377,626	\$1,966,213	\$1,885,775	\$1,404,093

Worthington Libraries
Worthington, Ohio
Assessed Value and Estimated Actual Value of Taxable Property
Last Ten Years

Year	Real Property			Tangible Personal Property			
	Assessed Value			Public Utility		General Business	
	Residential/ Agricultural	Commercial/ Industrial/PU	Estimated Actual Value	Assessed Value	Estimated Actual Value	Assessed Value	Estimated Actual Value
2008	1,341,080,840	442,283,210	5,095,325,857	29,157,310	33,133,307	49,073,694	196,294,776
2009	1,356,112,130	444,618,780	5,144,945,457	29,914,350	33,993,580	8,593,327	34,373,308
2010	1,365,780,710	439,688,670	5,158,483,943	30,224,580	34,346,114	4,296,663	17,186,652
2011	1,372,120,560	433,783,410	5,159,725,629	34,228,570	38,896,102	0	0
2012	1,325,524,970	415,586,560	4,974,604,371	37,985,760	43,165,636	0	0
2013	1,333,230,330	414,567,350	4,993,707,657	37,884,090	43,050,102	0	0
2014	1,336,091,930	408,558,320	4,984,715,000	35,896,610	40,791,602	0	0
2015	1,390,188,880	397,473,620	5,107,607,143	38,964,780	44,278,159	0	0
2016	1,396,134,530	403,130,660	5,140,757,686	42,594,160	48,402,455	0	0
2017	1,399,228,110	411,207,900	5,172,674,314	44,365,290	50,415,102	0	0

The assessed value of real property (including public utility real property) is 35 percent of estimated true value. The assessed value of public utility personal property ranges from 25 percent of true value for railroad property to 88 percent for electric transmission and distribution property. General business tangible personal property tax was phased out beginning in 2006. Both types of general business tangible personal property were assessed at, 6.25 percent for 2008, and zero for 2009. Beginning in 2007, House Bill 66 switched telephone companies from being public utilities to general business taxpayers and began a four year phase out of the tangible personal property tax on local and inter-exchange telephone companies. No tangible personal property taxes were levied or collected in 2009 from general business taxpayers (except telephone companies whose last year to pay tangible personal property tax was 2010.)

The tangible personal property values associated with each year are the values that, when multiplied by the applicable rates, generated the property tax revenue billed in that year. For real property, the amounts generated by multiplying the assessed values by the applicable rates would be reduced by the 10 percent and 2 1/2 percent rollbacks and homestead exemptions before being billed.

Source: Ohio Department of Taxation, Franklin County Auditor

Totals			Weighted Average Total Direct Tax Rate
Assessed Value	Estimated Actual Value	Ratio	
1,861,595,054	5,324,753,940	34.96%	3.71
1,839,238,587	5,213,312,345	35.28%	3.68
1,839,990,623	5,210,016,709	35.32%	3.68
1,840,132,540	5,198,621,731	35.40%	3.81
1,779,097,290	5,017,770,007	35.46%	3.81
1,785,681,770	5,036,757,759	35.45%	3.82
1,780,546,860	5,025,506,602	35.43%	4.43
1,826,627,280	5,151,885,302	35.46%	4.44
1,841,859,350	5,189,160,141	35.49%	3.64
1,854,801,300	5,223,089,416	35.51%	4.34

Worthington Libraries
Worthington, Ohio
Property Tax Levies and Collections (1)
Last Ten Years

Collection Year	Current Tax Levy	Current Tax Collections (1)	Percent of Current Tax Collections to Current Tax Levy	Delinquent Tax Collections (2)	Total Tax Collections	Percent of Total Tax Collections to Current Tax Levy
2008	7,048,734	6,278,922	89.08%	144,930	6,423,852	91.13%
2009	6,757,747	6,255,053	92.56%	149,765	6,404,818	94.78%
2010	6,803,660	6,596,945	96.96%	202,942	6,799,887	99.94%
2011	6,799,383	6,581,360	96.79%	171,390	6,752,750	99.31%
2012	6,841,073	6,621,483	96.79%	148,906	6,770,389	98.97%
2013	6,840,662	6,588,689	96.32%	157,802	6,746,491	98.62%
2014	6,833,017	6,511,978	95.30%	133,330	6,645,308	97.25%
2015	8,119,979	7,890,529	97.17%	141,959	8,032,488	98.92%
2016	8,192,677	8,002,496	97.68%	128,177	8,130,673	99.24%
2017	8,252,459	8,088,758	98.02%	154,821	8,243,579	99.89%

Source: Franklin County Auditor

- (1) Includes Homestead/Rollback exemptions assessed locally, but distributed through the State and reported as intergovernmental revenue.
- (2) The Franklin County Auditor's Office confirmed the Percent of Total Collections to Tax Levy column includes percentages in excess of 100% due to timing issues with the collection of property taxes. The Auditor's Office is unable to track delinquent taxes collected by year levied. Therefore, Worthington Libraries has elected to show delinquent taxes by collection year. This presentation will be updated as new information becomes available.

Worthington Libraries
Worthington, Ohio
Principal Property Taxpayers
2008 and 2017

2008			2017		
Name of Taxpayer	Assessed Value	Percent of Total Assessed Value	Name of Taxpayer	Assessed Value	Percent of Total Assessed Value
Public Utilities			Public Utilities		
1 Columbus Southern Power Company	\$24,159,800	1.30%	1 Ohio Power Company	\$35,896,630	1.94%
Real Estate			Real Estate		
1 Anheuser-Busch Inc	18,706,350	1.00%	1 Anheuser-Busch Inc	18,290,420	0.99%
2 EOP-Community Corporate	8,610,000	0.46%	2 District Two LLC	10,156,170	0.55%
3 Eastrich No 167 Corp	8,141,660	0.44%	3 Worthington Meadows	9,190,750	0.50%
4 Fieldstone Trace Partnership	7,805,010	0.42%	4 Worthington Industries Inc	8,620,960	0.46%
5 Worthington Meadows	7,665,040	0.41%	5 Fieldstone Trace Partnership	6,918,140	0.37%
6 Worthington Industries	6,664,540	0.36%	6 445 Hutchinson LP	6,755,010	0.36%
7 Crosswoods Central Park	6,568,180	0.35%	7 Stratford Chase	6,136,970	0.33%
8 Columbus Retail Inc	6,328,010	0.34%	8 BRG Liberty Crossing LLC	5,687,510	0.31%
9 Corporate Hill LLC	6,006,040	0.32%	9 Alexander Square LLC	5,509,000	0.30%
10 Busch Properties	5,800,880	0.31%	10 Is-Can Ohio X LLP	5,241,260	0.28%
All Others	<u>1,755,139,544</u>	<u>94.28%</u>	All Others	<u>1,736,398,480</u>	<u>93.62%</u>
Total Assessed Valuation	<u>\$1,861,595,054</u>	<u>100.00%</u>	Total Assessed Valuation	<u>\$1,854,801,300</u>	<u>100.00%</u>

Source: Office of the Auditor, Franklin County, Ohio

Worthington Libraries
Worthington, Ohio
Direct and Overlapping Property Tax Rates
 (Per \$1,000 of Assessed Value)
Last Ten Years

	2008	2009	2010	2011
Voted Millage - By Levy				
1992 Current Expense				
Residential/Agricultural Real	\$1.20	\$1.20	\$1.20	\$1.25
Commercial/Industrial and Public Utility Real	1.87	1.86	1.88	2.00
General Business and Public Utility Personal	2.20	2.20	2.20	2.20
2005 Current Expense				
Residential/Agricultural Real	2.19	2.19	2.19	2.28
Commercial/Industrial and Public Utility Real	2.60	2.59	2.60	2.60
General Business and Public Utility Personal	2.60	2.60	2.60	2.60
Total Voted Millage By Type of Property				
Residential/Agricultural Real	3.39	3.39	3.39	3.53
Commercial/Industrial and Public Utility Real	4.47	4.45	4.48	4.60
General Business and Public Utility Personal	4.80	4.80	4.80	4.80
Overlapping Rates By Taxing District				
Franklin County				
General Fund	1.47	1.47	1.47	1.47
Children Services	5.05	5.05	5.00	5.00
ADAMH Board	2.20	2.20	2.20	2.20
MRDD	7.47	7.00	7.00	7.00
Metro Park	0.65	0.65	0.75	0.75
Zoological Park	0.75	0.75	0.75	0.75
Office on Aging	0.90	0.90	0.90	0.90
Total Franklin County	18.49	18.02	18.07	18.07
School District				
Worthington City School District	83.23	83.14	87.04	88.54
Townships				
Sharon Township	23.50	23.50	23.50	23.50
Perry Township	21.20	18.10	17.60	18.10
Cities				
City of Worthington	5.00	5.00	5.00	5.00
City of Columbus	3.14	3.14	1.57	3.14

Source: Ohio Department of Taxation, County Auditor, Franklin County

The rates presented for a particular calendar year are the rates that, when applied to the assessed values presented in the Assessed Value Table, generated the property tax revenue for that year.

Rates may only be raised by obtaining the approval of a majority of the voters at a public election.

Real property tax rates are reduced so that inflationary increases in value do not generate additional taxes. Real property is reappraised every six years and property values are updated in the third year following each reappraisal.

2012	2013	2014	2015	2016	2017
\$1.25	\$1.25	\$2.13	\$2.12	\$2.12	\$2.12
2.00	2.06	2.20	2.20	2.20	2.20
2.20	2.20	2.20	2.20	2.20	2.20
2.28	2.28	2.21	2.21	2.21	2.21
2.60	2.60	2.60	2.60	2.60	2.60
2.60	2.60	2.60	2.60	2.60	2.60
3.53	3.53	4.34	4.33	4.33	4.33
4.60	4.66	4.80	4.80	4.80	4.80
4.80	4.80	4.80	4.80	4.80	4.80
1.47	1.47	1.47	1.47	1.47	1.47
5.00	5.00	5.00	5.00	5.00	5.00
2.20	2.20	2.20	2.20	2.20	2.20
7.00	7.00	7.00	7.00	7.00	7.00
0.75	0.75	0.75	0.75	0.75	0.75
0.75	0.75	0.75	0.75	0.75	0.75
1.30	1.30	1.30	1.30	1.30	1.75
18.47	18.47	18.47	18.47	18.47	18.92
94.94	95.94	96.94	96.94	96.94	96.94
23.50	23.50	1.57	1.57	23.50	27.50
21.60	21.60	21.60	21.60	23.10	25.10
5.00	5.00	5.00	5.00	5.00	5.00
3.14	3.14	3.14	3.14	3.14	3.14

Worthington Libraries
Worthington, Ohio
Computation of Direct and Overlapping Governmental Debt
December 31, 2017

	Net Long-term Debt Outstanding	Estimated Percentage Applicable	Amount Applicable to Library
Direct:			
Worthington Libraries	\$0	100.00%	\$0
Overlapping:			
Worthington City School District			
Certificates of Participation	2,246,830	100.00%	2,246,830
General Obligation Bonds and Notes	65,082,035	100.00%	65,082,035
Energy Conservation Notes	3,077,974	100.00%	3,077,974
City of Worthington			
General Obligation Bonds and Notes	3,780,000	100.00%	3,780,000
Franklin County (2)			
General Obligation Bonds	250,857,000	7.19%	18,048,712
Special Obligation Bonds & Notes	22,730,000	7.19%	1,635,383
Ohio Public Works Commission Loans	3,615,000	7.19%	260,093
City of Columbus (3)			
Revenue Obligations	1,433,184,000	8.59%	123,125,188
General Obligation Bonds	1,261,349,000	8.59%	108,362,801
RiverSouth Lease Revenue Bonds (Component Unit)	76,440,000	8.59%	6,566,979
Total Overlapping Debt	<u>3,122,361,839</u>		<u>332,185,993</u>
Total Direct and Overlapping Debt	<u>\$3,122,361,839</u>		<u>\$332,185,993</u>

Source: Office of the Auditor, Franklin County, Ohio, and Financial Statements for the respective subdivision.

- (1) Percentages were determined by dividing the assessed valuation of the political subdivision located within the boundaries of the District by the total assessed valuation of the subdivision. The valuations used were for the 2016 collection year.
- (2) The debt outstanding for Franklin County is at December 30, 2016
- (3) The debt outstanding for City of Columbus is at December 30, 2016

Overlapping governments are those that coincide, at least in part, with the geographic boundaries of the Library. This schedule estimates the portion of the outstanding debt of those overlapping governments that is borne by the residents and businesses of the Library. This process recognizes that, when considering the Library's ability to issue and repay long-term debt, the entire debt burden borne by the residents and businesses should be taken into account.

Worthington Libraries
Worthington, Ohio
Ratio of Outstanding Debt by Type
Governmental Activities
Last Ten Years

Year	Capital Lease Payable	Percentage of Personal Income (1)	Per Capita (1)
2008	0	0.00%	0.00
2009	0	0.00%	0.00
2010	0	0.00%	0.00
2011	0	0.00%	0.00
2012	0	0.00%	0.00
2013	0	0.00%	0.00
2014	0	0.00%	0.00
2015	0	0.00%	0.00
2016	0	0.00%	0.00
2017	0	0.00%	0.00

Details regarding the Library's outstanding debt can be found in the notes to the financial statements

The Library does not have any outstanding debt.

(1) See Demographic and Economic Statistics table for personal income and population data.

Worthington Libraries
Worthington, Ohio
Demographic and Economic Statistics
Last Ten Years

Year	Population (1)	Personal Income (2)	Per Capita Personal Income (4)	Unemployment Rate (3)
2008	61,153	2,120,786,040	34,680	5.7%
2009	61,492	2,246,610,220	36,535	9.0%
2010	59,374	2,169,229,090	36,535	9.2%
2011	59,501	2,197,193,427	36,927	7.6%
2012	59,529	2,335,560,786	39,234	6.1%
2013	59,689	2,456,560,484	41,156	6.2%
2014	59,978	2,609,402,868	43,506	4.8%
2015	60,012	2,845,769,040	47,420	4.0%
2016	60,725	2,956,578,800	48,688	4.0%
2017	64,886	3,178,051,394	48,979	4.4%

- Sources:** (1) Mid Ohio Regional Planning Commission
(2) Calculated based on per capita income and population
(3) Ohio Bureau of Employment Services, not available for Worthington
Public Libraries. Figures presented are for Franklin County.
(4) MORPC through 2013, Ohio Department of Education 2014 - 2017

Worthington Libraries
Worthington, Ohio
Principal Employers
2008 and 2017

Employer	Nature of Business	2008		2017	
		Number of Employees	Rank	Number of Employees	Rank
Worthington Industries Inc	Steel Industry	1,100	2	1,350	1
Worthington School District	Education	1,154	1	1,199	2
Emerson Network Power (formerly Liebert Corporation)	Energy/Power	1,000	3	1,000	3
Anthem Blue Cross	Insurance	920	4	825	4
Anheuser-Busch Inc	Production Plant	869	5	621	5
Huntington Bank	Mortgage/Banking	535	6	510	6
Sandvik Hyperion (formerly Diamond Innovations)	Diamond Products	435	7	400	7
Medvet Medical Center	Animal Care	245	9	365	8
The Laurels Healthcare	Healthcare	270	8	240	9
American Automobile Association	Automotive	200	10	240	10

Source: Chamber of Commerce and Individual employer records

Note: Above figures are estimates based on Chamber of Commerce information and employer data provided to the Library. Actual information was not available. Percentage of total employment is not available.

Worthington Libraries
Worthington, Ohio
Library Employees by Function/Program
Last Ten Years

Function/Program	2008	2009	2010	2011
Governmental Activities:				
Library Services:				
Public Services and Programs	118	116	117	117
Collection Development and Processing	9	9	9	9
Support Services:				
Facilities Operations and Maintenance	1	1	1	1
Information Services Support	5	5	5	5
Business Administration	14	14	14	13
<i>Total Number of Employees</i>	147	145	146	145

Note: Figures include both full and part time employees.

Source: Worthington Public Library Records

2012	2013	2014	2015	2016	2017
119	123	120	121	121	116
9	9	9	9	9	9
1	1	1	1	1	1
5	5	5	5	7	6
14	14	15	16	16	15
148	152	150	152	154	147

Worthington Libraries
Worthington, Ohio
Operating Indicators By Function/Program
Last Ten Years

Function/Program	2008	2009	2010	2011
Library Services:				
Public Services and Programs				
Number of Materials Circulated	3,237,654	3,561,742	3,554,451	3,417,074
Number of Registered Borrowers	62,571	70,202	83,784	89,368
Collection Development and Processing				
Number of Materials Owned	409,060	498,773	502,685	491,733
Support Services:				
Facilities Operations and Maintenance				
Square footage of Facility Maintained:				
Old Worthington Library	42,446	42,446	42,446	42,446
Northwest Library	25,481	25,481	25,481	25,481
Worthington Park Library	5,280	5,280	5,280	5,280
Information Services Support				
Number of Computers	347	348	356	359
Number of Web Site Visits	1,858,073	1,348,505	1,451,305	1,071,611

Source: Worthington Public Libraries Information and Public Library Data Service (PLDS)

2012	2013	2014	2015	2016	2017
3,308,392	3,397,947	3,657,979	4,024,184	3,963,942	4,060,329
89,247	93,047	97,839	79,522	75,794	78,081
468,667	548,598	556,636	808,739	808,122	1,203,198
42,446	42,446	42,446	42,446	42,446	42,446
25,481	25,481	25,481	25,481	25,481	25,481
5,280	8,680	8,680	8,680	8,680	8,680
368	410	408	443	456	478
1,049,421	1,055,779	1,047,878	1,136,306	1,016,310	1,052,929

Worthington Libraries
Worthington, Ohio
Capital Assets Statistics by Function/Class
Last Ten Years

Function/Class	2008	2009	2010	2011
Library Services:				
Public Services and Programs				
Land	\$697,350	\$697,350	\$697,350	\$697,350
Construction in Progress	2,233,909	0	0	0
Buildings and Improvements	5,150,819	7,533,449	7,533,449	7,564,905
Machinery and Equipment	471,025	471,025	471,025	492,346
Collection Development and Processing				
Land	17,206	17,206	17,206	17,206
Construction in Progress	55,119	0	0	0
Buildings and Improvements	126,966	185,754	185,754	185,754
Support Services:				
Facilities Operations and Maintenance				
Land	120,443	120,443	120,443	120,443
Construction in Progress	385,830	0	21,674	0
Buildings and Improvements	1,184,115	1,595,632	1,604,209	1,604,209
Machinery and Equipment	12,800	18,367	24,847	24,847
Information Services Support				
Land	8,558	8,558	8,558	8,558
Construction in Progress	27,414	0	0	0
Buildings and Improvements	63,147	92,386	92,386	92,386
Machinery and Equipment	143,834	143,834	149,088	174,085
Business Administration				
Land	66,822	66,822	66,822	66,822
Construction in Progress	214,058	0	0	0
Buildings and Improvements	493,085	721,394	721,394	721,394
Machinery and Equipment	197,965	204,462	204,462	204,462
Vehicles	18,300	18,300	18,300	18,300
<i>Total Governmental Activities</i>	<u>\$11,688,765</u>	<u>\$11,894,982</u>	<u>\$11,936,967</u>	<u>\$11,993,067</u>

Source: Library capital assets records.

Amounts presented are actual costs of assets.

2012	2013	2014	2015	2016	2017
\$697,350	\$697,350	\$693,992	\$693,992	\$535,372	\$535,372
66,655	23,771	0	30,800	52,480	0
7,564,905	7,942,335	8,228,692	8,228,692	8,228,692	8,228,691
492,346	492,346	505,499	533,156	592,817	641,827
17,206	17,206	17,123	17,123	13,164	13,164
0	0	0	0	0	0
185,754	185,754	135,314	135,314	135,314	135,314
120,443	120,443	119,863	119,863	92,440	92,440
0	0	0	21,149	0	0
1,620,250	1,620,250	1,436,958	1,436,958	1,524,729	1,537,089
31,609	31,609	243,277	243,277	313,926	330,139
8,558	8,558	8,516	8,516	6,582	6,582
0	138,874	0	0	0	0
92,386	115,672	400,617	400,617	400,617	400,617
187,274	250,986	251,508	251,508	266,601	158,392
66,822	66,822	66,500	66,500	51,333	51,333
0	0	0	0	62,000	0
721,394	721,394	527,679	527,679	527,679	527,679
204,462	214,718	215,199	66,041	86,744	170,434
18,300	18,300	18,300	18,300	18,300	18,300
<u>\$12,095,714</u>	<u>\$12,666,388</u>	<u>\$12,869,037</u>	<u>\$12,799,485</u>	<u>\$12,908,790</u>	<u>\$12,847,373</u>

This page intentionally left blank.



Dave Yost • Auditor of State

WORTHINGTON LIBRARIES

FRANKLIN COUNTY

CLERK'S CERTIFICATION

This is a true and correct copy of the report which is required to be filed in the Office of the Auditor of State pursuant to Section 117.26, Revised Code, and which is filed in Columbus, Ohio.

Susan Babbitt

CLERK OF THE BUREAU

**CERTIFIED
JULY 3, 2018**