



OHIO AUDITOR OF STATE  
**KEITH FABER**





**MADEIRA CITY SCHOOL DISTRICT  
HAMILTON COUNTY  
JUNE 30, 2020**

**TABLE OF CONTENTS**

<b>TITLE</b>	<b>PAGE</b>
Independent Auditor's Report .....	1
Prepared by Management:	
Management's Discussion and Analysis .....	3
Basic Financial Statements:	
Government-wide Financial Statements:	
Statement of Net Position .....	13
Statement of Activities.....	14
Fund Financial Statements:	
Balance Sheet	
Governmental Funds.....	15
Reconciliation of Total Governmental Fund Balance to Net Position of Governmental Activities .....	16
Statement of Revenues, Expenditures and Changes in Fund Balance Governmental Funds .....	17
Reconciliation of the Statement of Revenues, Expenditures and Changes in Fund Balance of Governmental Funds to the Statement of Activities.....	18
Statement of Fiduciary Assets and Liabilities .....	19
Notes to the Basic Financial Statements .....	20
Required Supplementary Information:	
Schedule of the District's Proportionate Share of the Net Pension Liability School Employees Retirement System of Ohio – Last Seven Fiscal Years.....	56
Schedule of the District's Contributions for Net Pension Liability School Employees Retirement System of Ohio – Last Ten Fiscal Years.....	57
Schedule of the District's Proportionate Share of the Net Pension Liability State Teachers Retirement System of Ohio – Last Seven Fiscal Years .....	58
Schedule of the District's Contributions for Net Pension Liability State Teachers Retirement System of Ohio – Last Ten Fiscal Years .....	59
Schedule of the District's Proportionate Share of the Net OPEB Liability School Employees Retirement System of Ohio - Last Four Fiscal Years .....	60
Schedule of District's Contributions for Net OPEB Liability School Employees Retirement System of Ohio - Last Five Fiscal Years .....	61

MADEIRA CITY SCHOOL DISTRICT  
HAMILTON COUNTY  
JUNE 30, 2020

TABLE OF CONTENTS  
(Continued)

<b>TITLE</b>	<b>PAGE</b>
Schedule of the District's Proportionate Share of the Net OPEB (Asset)/Liability State Teachers Retirement System of Ohio - Last Four Fiscal Years.....	62
Schedule of District's Contributions for Net OPEB (Asset)/Liability State Teachers Retirement System of Ohio – Last Five Fiscal Years.....	63
Schedule of Revenues, Expenditures and Changes in Fund Balance - Budget and Actual (Non-GAAP Budgetary Basis) – General Fund .....	64
Notes to the Required Supplementary Information .....	65
Independent Auditor's Report on Internal Control Over Financial Reporting and on Compliance and Other Matters Required by <i>Government Auditing Standards</i> .....	71

# OHIO AUDITOR OF STATE KEITH FABER



Corporate Centre of Blue Ash  
11117 Kenwood Road  
Blue Ash, Ohio 45242-1817  
(513) 361-8550 or (800) 368-7419  
SouthwestRegion@ohioauditor.gov

## INDEPENDENT AUDITOR'S REPORT

Madeira City School District  
Hamilton County  
7465 Loannes Drive  
Cincinnati, Ohio 45243

To the Board of Education:

### ***Report on the Financial Statements***

We have audited the accompanying financial statements of the governmental activities, each major fund, and the aggregate remaining fund information of Madeira City School District, Hamilton County, Ohio (the District), as of and for the year ended June 30, 2020, and the related notes to the financial statements, which collectively comprise the District's basic financial statements as listed in the table of contents.

### ***Management's Responsibility for the Financial Statements***

Management is responsible for preparing and fairly presenting these financial statements in accordance with accounting principles generally accepted in the United States of America; this includes designing, implementing, and maintaining internal control relevant to preparing and fairly presenting financial statements that are free from material misstatement, whether due to fraud or error.

### ***Auditor's Responsibility***

Our responsibility is to opine on these financial statements based on our audit. We audited in accordance with auditing standards generally accepted in the United States of America and the financial audit standards in the Comptroller General of the United States' *Government Auditing Standards*. Those standards require us to plan and perform the audit to reasonably assure the financial statements are free from material misstatement.

An audit requires obtaining evidence about financial statement amounts and disclosures. The procedures selected depend on our judgment, including assessing the risks of material financial statement misstatement, whether due to fraud or error. In assessing those risks, we consider internal control relevant to the District's preparation and fair presentation of the financial statements in order to design audit procedures that are appropriate in the circumstances, but not to the extent needed to opine on the effectiveness of the District's internal control. Accordingly, we express no such opinion. An audit also includes evaluating the appropriateness of management's accounting policies and the reasonableness of their significant accounting estimates, as well as our evaluation of the overall financial statement presentation.

We believe the audit evidence we obtained is sufficient and appropriate to support our audit opinions.

**Opinion**

In our opinion, the financial statements referred to above present fairly, in all material respects, the respective financial position of the governmental activities, each major fund, and the aggregate remaining fund information of the District, as of June 30, 2020, and the respective changes in financial position thereof for the year then ended in accordance with the accounting principles generally accepted in the United States of America.

**Emphasis of Matter**

As discussed in Note 21 to the financial statements, the financial impact of COVID-19 and the continuing emergency measures may impact subsequent periods of the District. We did not modify our opinion regarding this matter.

**Other Matters**

*Required Supplementary Information*

Accounting principles generally accepted in the United States of America require this presentation to include *management's discussion and analysis, required budgetary comparison schedule* and schedules of net pension and other post-employment benefit liabilities and pension and other post-employment benefit contributions listed in the table of contents, to supplement the basic financial statements. Although this information is not part of the basic financial statements, the Governmental Accounting Standards Board considers it essential for placing the basic financial statements in an appropriate operational, economic, or historical context. We applied certain limited procedures to the required supplementary information in accordance with auditing standards generally accepted in the United States of America, consisting of inquiries of management about the methods of preparing the information and comparing the information for consistency with management's responses to our inquiries, to the basic financial statements, and other knowledge we obtained during our audit of the basic financial statements. We do not opine or provide any assurance on the information because the limited procedures do not provide us with sufficient evidence to opine or provide any other assurance.

**Other Reporting Required by Government Auditing Standards**

In accordance with *Government Auditing Standards*, we have also issued our report dated January 7, 2021, on our consideration of the District's internal control over financial reporting and our tests of its compliance with certain provisions of laws, regulations, contracts and grant agreements and other matters. That report describes the scope of our internal control testing over financial reporting and compliance, and the results of that testing, and does not opine on internal control over financial reporting or on compliance. That report is an integral part of an audit performed in accordance with *Government Auditing Standards* in considering the District's internal control over financial reporting and compliance.



Keith Faber  
Auditor of State  
Columbus, Ohio  
January 7, 2021

**Madeira City School District  
Management's Discussion and Analysis  
For the Fiscal Year Ended June 30, 2020  
(Unaudited)**

---

The discussion and analysis of Madeira City School District's financial performance provides an overall review of the District's financial activities for the fiscal year ended June 30, 2020. The intent of this discussion and analysis is to look at the District's financial performance as a whole; readers should also review the notes to the basic financial statements and financial statements to enhance their understanding of the District's performance.

**Financial Highlights**

Key financial highlights for 2020 are as follows:

- Net position of governmental activities decreased \$5,309,380 from 2019.
- General revenues accounted for \$18,735,187 in revenue or 90% of all revenues. Program specific revenues in the form of charges for services and sales, grants and contributions accounted for \$2,177,785 or 10% of total revenues of \$20,912,972.
- The District had \$26,222,352 in expenses related to governmental activities; \$2,177,785 of these expenses were offset by program specific charges for services, grants or contributions. General revenues of \$18,735,187 were also used to provide for these programs.

**Overview of the Financial Statements**

This annual report consists of a series of financial statements and notes to those statements. These statements are organized so the reader can understand the District as a financial whole, an entire operating entity. The statements then proceed to provide an increasingly detailed look at specific financial activities.

The *Statement of Net Position* and *Statement of Activities* provide information about the activities of the whole District, presenting both an aggregate view of the District's finances and a longer-term view of those finances. Fund financial statements provide the next level of detail. For governmental funds, these statements tell how services were financed in the short-term as well as what remains for future spending. The fund financial statements also look at the District's most significant funds with all other nonmajor funds presented in total in one column. The General, Debt Service and Permanent Improvement funds, are the major funds of the District.

**Government-wide Financial Statements**

While this document contains the large number of funds used by the District to provide programs and activities, the view of the District as a whole looks at all financial transactions and asks the question, "How did we do financially during 2020?" The Government-wide Financial Statements answer this question. These statements include *all assets and deferred outflows*, and *liabilities and deferred inflows* using the accrual basis of accounting similar to the accounting used by most private-sector companies. This basis of accounting takes into account all of the current year's revenues and expenses regardless of when cash is received or paid.

These two statements report the District's *net position* and changes in those assets. This change in net position is important because it tells the reader that, for the District as a whole, the financial position has improved or diminished. The causes of this change may be the result of many factors, both financial

**Madeira City School District  
Management's Discussion and Analysis  
For the Fiscal Year Ended June 30, 2020  
(Unaudited)**

---

and non-financial. Non-financial factors include the District's property tax base, current property tax laws in Ohio restricting revenue growth, facility conditions, required educational programs and other factors.

In the Government-wide Financial Statements, overall financial position of the District is presented in the following manner:

- **Governmental Activities** – Most of the District's programs and services are reported here including instruction, support services, operation of non-instructional services and extracurricular activities and interest and fiscal charges.

**Fund Financial Statements**

The analysis of the District's major funds is presented in the Fund Financial Statements (see Table of Contents). Fund financial reports provide detailed information about the District's major funds. The District uses many funds to account for a multitude of financial transactions. However, these fund financial statements focus on the District's most significant funds.

**Governmental Funds** Most of the District's activities are reported in governmental funds, which focus on how money flows into and out of those funds and the balances left at year-end available for spending in future periods. These funds are reported using an accounting method called *modified accrual* accounting, which measures cash and all other *financial assets* that can readily be converted to cash. The governmental fund statements provide a detailed *short-term view* of the District's general government operations and the basic services it provides. Governmental fund information helps you determine whether there are more or fewer financial resources that can be spent in the near future to finance educational programs. The relationship (or differences) between governmental *activities* (reported in the Statement of Net Position and the Statement of Activities) and governmental *funds* is reconciled in the financial statements.

**Fiduciary Funds** Fiduciary Funds are used to account for resources held for the benefits of parties outside the government. Fiduciary Funds are not reflected in the government-wide financial statements because the resources of those funds are not available to support the District's own programs.

**The District as a Whole**

As stated previously, the Statement of Net Position looks at the District as a whole. Table 1 provides a summary of the District's net position for 2020 compared to 2019:

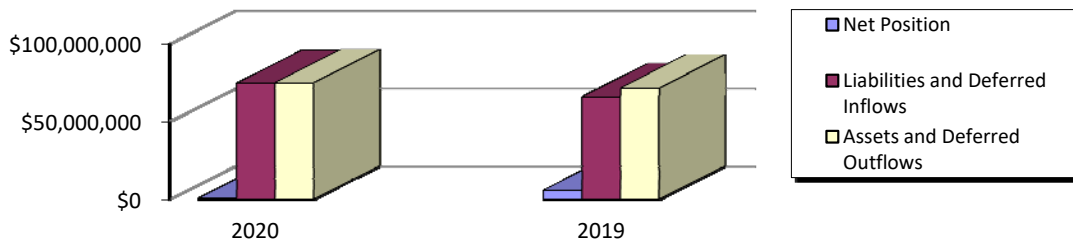
***This Space Intentionally Left Blank***



**Madeira City School District  
Management’s Discussion and Analysis  
For the Fiscal Year Ended June 30, 2020  
(Unaudited)**

**Table 1  
Net Position**

	Governmental Activities	
	2020	2019
<b>Assets:</b>		
Current and Other Assets	\$42,485,065	\$37,435,135
Net OPEB Asset	1,406,144	1,361,939
Capital Assets	25,747,714	25,992,902
<b>Total Assets</b>	<b>69,638,923</b>	<b>64,789,976</b>
<b>Deferred Outflows of Resources:</b>		
Deferred Charge on Refunding	75,596	85,046
OPEB	491,931	305,262
Pension	4,669,217	6,367,013
<b>Total Deferred Outflows of Resources</b>	<b>5,236,744</b>	<b>6,757,321</b>
<b>Liabilities:</b>		
Other Liabilities	3,139,193	2,614,895
Long-Term Liabilities	50,392,531	47,681,420
<b>Total Liabilities</b>	<b>53,531,724</b>	<b>50,296,315</b>
<b>Deferred Inflows of Resources:</b>		
Property Tax	16,961,141	11,288,747
Revenue in Lieu of Taxes	524,895	268,353
OPEB	2,286,261	1,605,213
Pension	1,138,745	2,346,388
<b>Total Deferred Inflows of Resources</b>	<b>20,911,042</b>	<b>15,508,701</b>
<b>Net Position:</b>		
Net Investment in Capital Assets	2,763,364	5,498,002
Restricted	2,912,226	3,373,726
Unrestricted	(5,242,689)	(3,129,447)
<b>Total Net Position</b>	<b>\$432,901</b>	<b>\$5,742,281</b>



Over time, net position can serve as a useful indicator of a government’s financial position. At June 30, 2020, the District’s assets and deferred outflows exceeded liabilities and deferred inflows by \$432,901.

At year-end, capital assets represented 34% of total assets and deferred outflows. Capital assets include

**Madeira City School District  
Management's Discussion and Analysis  
For the Fiscal Year Ended June 30, 2020  
(Unaudited)**

---

land, construction in progress, buildings and improvements, and equipment. Net investment in capital assets at June 30, 2020, totaled \$2,763,364. These capital assets are used to provide services to the students and are not available for future spending. Although the District's investment in capital assets is reported net of related debt, it should be noted that the resources to repay the debt must be provided from other sources, since capital assets may not be used to liquidate these liabilities.

A portion of the District's net position, \$2,912,226 represents resources that are subject to external restriction on how they must be used. The external restriction will not affect the availability of fund resources for future use.

Current assets increased due to an increase in pooled cash and investments. Capital assets decreased due to depreciation expense being greater than current year additions. Other liabilities increased from 2019 to 2020. Long term liabilities increased mainly due to the issuance of new long-term debt during the fiscal year. Deferred outflows of resources related to pension decreased and deferred inflows of resources related to pension decreased mainly due to a change in the net difference between projected and actual earnings on pension plan investments.

Table 2 shows the changes in net position for fiscal years 2020 and 2019.

***This Space Intentionally Left Blank***

**Madeira City School District**  
**Management's Discussion and Analysis**  
**For the Fiscal Year Ended June 30, 2020**  
(Unaudited)

**Table 2**  
**Changes in Net Position**

	Governmental Activities	
	2020	2019
Revenues:		
Program Revenues:		
Charges for Services and Sales	\$1,068,326	\$1,107,545
Operating Grants and Contributions	1,109,459	1,015,615
Total Program Revenues	2,177,785	2,123,160
General Revenues:		
Property Taxes	13,346,621	18,227,330
Grants and Entitlements	4,555,632	4,830,520
Other	832,934	1,051,760
Total General Revenues	18,735,187	24,109,610
Total Revenues	20,912,972	26,232,770
Program Expenses:		
Instruction	15,341,606	12,447,250
Support Services:		
Pupil and Instructional Staff	2,488,804	1,990,685
School and General Administration, Fiscal and Business	2,769,159	2,019,542
Operations and Maintenance	1,516,726	1,526,924
Pupil Transportation	1,030,775	984,952
Central	13,979	16,576
Operation of Non-Instructional Services	1,142,929	791,206
Extracurricular Activities	708,893	581,271
Interest and Fiscal Charges	1,209,481	1,207,192
Total Program Expenses	26,222,352	21,565,598
Changes in Net Position	(5,309,380)	4,667,172
Net Position - Beginning of Year	5,742,281	1,075,109
Net Position - End of Year	\$432,901	\$5,742,281

The District revenues came from mainly two sources. Property taxes levied for general and debt service purposes, as well as grants and entitlements comprised 86% of the District's revenues for governmental activities.

The District depends greatly on property taxes as a revenue source. The unique nature of property taxes in Ohio creates the need to routinely seek voter approval for operating funds. The overall revenues generated by a levy will not increase solely as a result of inflation. As an example, a homeowner with a home valued at \$100,000 and taxed at 1.0 mill would pay \$35.00 annually in taxes. If three years later the home were reappraised and increased to \$200,000 (and this inflationary increase in value is comparable to other property owners) the effective tax rate would become 0.5 mills and the owner

**Madeira City School District  
 Management’s Discussion and Analysis  
 For the Fiscal Year Ended June 30, 2020  
 (Unaudited)**

---

would still pay \$35.00.

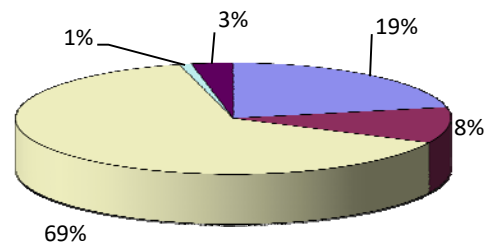
Thus Ohio districts dependent upon property taxes are hampered by a lack of revenue growth and must regularly return to the voters to maintain a constant level of service.

Property taxes made up 64% of governmental activities for the District in fiscal year 2020. The District’s reliance upon tax revenues is demonstrated in the following graph:

**Governmental Activities  
 Revenue Sources**

---

Revenue Sources	2020	Percent of Total
General Grants	\$4,555,632	22%
Program Revenues	2,177,785	10%
General Tax Revenues	13,346,621	64%
Investment Earnings	192,453	1%
Other Revenues	640,481	3%
	<u>\$20,912,972</u>	<u>100%</u>



Instruction comprises 58% of governmental program expenses. Support services expenses were 30% of governmental program expenses. All other expenses including interest expense were 12%. Interest expense was attributable to the outstanding bond and borrowing for capital projects.

Property tax revenues decreased from the prior year mainly due to a decrease in property tax advances available. Total Expenses increased in 2020 as compared to 2019 primarily due to changes related to net pension liability and other post employment benefits liability.

**Governmental Activities**

The Statement of Activities shows the cost of program services and the charges for services and grants offsetting those services. Table 3 shows, for governmental activities, the total cost of services and the net cost of services. That is, it identifies the cost of these services supported by tax revenue and unrestricted State entitlements.

***This Space Intentionally Left Blank***

**Madeira City School District**  
**Management's Discussion and Analysis**  
**For the Fiscal Year Ended June 30, 2020**  
(Unaudited)

**Table 3**  
**Governmental Activities**

	Total Cost of Services		Net Cost of Services	
	2020	2019	2020	2019
Instruction	\$15,341,606	\$12,447,250	(\$14,449,541)	(\$11,677,115)
Support Services:				
Pupil and Instructional Staff	2,488,804	1,990,685	(2,391,956)	(1,914,010)
School and General Administration,				
Fiscal and Business	2,769,159	2,019,542	(2,769,159)	(2,019,542)
Operations and Maintenance	1,516,726	1,526,924	(1,456,214)	(1,509,901)
Pupil Transportation	1,030,775	984,952	(1,028,318)	(982,416)
Central	13,979	16,576	(13,979)	(16,576)
Operation of Non-Instructional Services	1,142,929	791,206	(252,585)	161,220
Extracurricular Activities	708,893	581,271	(473,334)	(276,906)
Interest and Fiscal Charges	1,209,481	1,207,192	(1,209,481)	(1,207,192)
Total Expenses	<u>\$26,222,352</u>	<u>\$21,565,598</u>	<u>(\$24,044,567)</u>	<u>(\$19,442,438)</u>

**The District's Funds**

The District has three major governmental funds: the General Fund, the Debt Service Fund and the Permanent Improvement Fund. Assets of these funds comprised \$42,183,077 (99%) of the total \$42,485,065 governmental fund assets.

**General Fund:** Fund balance at June 30, 2020 was \$12,554,246. Fund balance decreased \$6,214,787 from the prior year. The primary reason for the decrease in fund balance was due to a decrease in property tax revenues received along with a large transfer made out of the fund during the year.

**Debt Service Fund:** Fund balance at June 30, 2020 was \$2,719,331. Fund balance decreased \$429,199 from 2019. The primary reason for the decrease in fund balance is due to a decrease in property tax revenues received when compared to the prior year.

**Permanent Improvement Fund:** Fund balance at June 30, 2020 was \$5,775,582. Fund balance increased \$5,264,098 from 2019. The primary reason for the increase in fund balance is due to the issuance of new debt along with a large transfer in received from the General Fund.

**General Fund Budgeting Highlights**

The District's budget is prepared according to Ohio law and is based on accounting for certain transactions on a basis of cash receipts, disbursements and encumbrances. The most significant budgeted fund is the General Fund.

During the course of fiscal year 2020, the District amended its general fund budget, however none were significant. The District uses site-based budgeting and the budgeting systems are designed to tightly control total site budgets but provide flexibility for site management. During the course of the year, the District revised the Budget in an attempt to deal with unexpected changes in revenues and expenditures.

For the General Fund, final budget basis estimated revenue was \$21,823,925, compared to original budget estimates of \$21,916,261. Of the \$92,336 difference, most was due to overestimates made for

**Madeira City School District  
Management’s Discussion and Analysis  
For the Fiscal Year Ended June 30, 2020  
(Unaudited)**

---

taxes and intergovernmental revenue.

The District’s ending unobligated actual fund balance for the General Fund was \$11,791,642.

**Capital Assets and Debt Administration**

**Capital Assets**

At fiscal year end, the District had \$25,747,714 invested in land, construction in progress, buildings and improvements, and equipment. Table 4 shows fiscal year 2020 balances compared to fiscal year 2019:

**Table 4  
Capital Assets at Year End  
(Net of Depreciation)**

---

	Governmental Activities	
	2020	2019
Land	\$1,233,381	\$1,233,381
Construction in Progress	806,830	152,957
Buildings and Improvements	23,627,319	24,497,125
Equipment	80,184	109,439
Total Net Capital Assets	<u>\$25,747,714</u>	<u>\$25,992,902</u>

The District continues its ongoing commitment to maintaining and improving its capital assets. See Note 6 to the basic financial statements for further details on the District’s capital assets.

**Debt**

At fiscal year end, the District had \$23,821,301 in bonds and capital leases payable, \$852,502 due within one year. Table 5 summarizes bonds and capital leases outstanding at year end.

**Table 5  
Outstanding Debt at Year End**

---

	Governmental Activities	
	2020	2019
General Obligation Bonds:		
2020 Auditorium Renovation Bonds:		
Current Interest	\$3,000,000	\$0
2006 School Improvement Refunding Bonds:		
Current Interest	9,605,000	9,605,000
Capital Appreciation	464,946	959,946
Accretion of Interest	410,126	641,852
2017 Refunding Bonds:		
Current Interest	9,990,000	10,015,000
Capital Leases	<u>351,229</u>	<u>341,155</u>
Total Bonds and Capital Leases	<u>\$23,821,301</u>	<u>\$21,562,953</u>

**Madeira City School District  
Management's Discussion and Analysis  
For the Fiscal Year Ended June 30, 2020  
(Unaudited)**

---

See Note 7-10 to the basic financial statements for further details on the District's long-term obligations.

**For the Future**

In June 2017, Ohio's Governor signed HB49, the state biennium budget bill for 2019 and 2018. No new funding model was introduced. Madeira continued to be on the guarantee for funding equal to previous years. The biennium budget bill for 2020 and 2021 froze basic state aid at fiscal year 2019 levels. At the end of fiscal year 2020 the district received a cut in state funding due to the COVID-19 pandemic. That same cut is expected in fiscal year 2021.

Due to the uncertain and ever changing State budget allocation to public schools, the district will be required to manage carefully and prudently the resources currently available. With careful planning the monitoring of the District's finances, the District's management is confident that the District can continue to provide a quality education for our students and provide a secure financial future.

**Contacting the District's Financial Management**

This financial report is designed to provide our citizens, taxpayers, and investors and creditors with a general overview of the District's finances and to show the District's accountability for the money it receives. If you have questions about this report or need additional financial information, contact the Treasurer at Madeira City School District, 7465 Loannes Drive, Cincinnati, Ohio 45243.

**This page intentionally left blank.**



Madeira City School District  
Statement of Net Position  
June 30, 2020

	Governmental Activities
Assets:	
Equity in Pooled Cash and Investments	\$21,746,157
Restricted Cash and Investments	37,172
Equity in Pooled Cash and Investments with Fiscal Agent	235,521
Receivables (Net):	
Taxes	19,807,492
Accounts	12,732
Interest	21,552
Intergovernmental	599,191
Prepaid Items	25,248
Nondepreciable Capital Assets	2,040,211
Depreciable Capital Assets, Net	23,707,503
Net OPEB Asset	1,406,144
<b>Total Assets</b>	<b>69,638,923</b>
Deferred Outflows of Resources:	
Deferred Charge on Refunding	75,596
Pension	4,669,217
OPEB	491,931
<b>Total Deferred Outflows of Resources</b>	<b>5,236,744</b>
Liabilities:	
Accounts Payable	53,757
Accrued Wages and Benefits	2,646,900
Contracts Payable	342,339
Retainage Payable	37,172
Accrued Interest Payable	59,025
Long-Term Liabilities:	
Due Within One Year	998,115
Due In More Than One Year	
Net Pension Liability	23,470,866
Net OPEB Liability	2,015,994
Other Amounts	23,907,556
<b>Total Liabilities</b>	<b>53,531,724</b>
Deferred Inflows of Resources:	
Property Taxes	16,961,141
Revenue in Lieu of Taxes	524,895
Pension	1,138,745
OPEB	2,286,261
<b>Total Deferred Inflows of Resources</b>	<b>20,911,042</b>
Net Position:	
Net Investment in Capital Assets	2,763,364
Restricted for:	
Debt Service	2,725,500
Federal Grants	11,007
District Managed Activities	53,560
Auxiliary Services	1,326
Other Purposes	120,833
Unrestricted	(5,242,689)
<b>Total Net Position</b>	<b>\$432,901</b>

See accompanying notes to the basic financial statements.

Madeira City School District  
Statement of Activities  
For the Fiscal Year Ended June 30, 2020

	Expenses	Program Revenues		Net (Expense) Revenue
		Charges for Services and Sales	Operating Grants and Contributions	and Changes in Net Position Governmental Activities
<b>Governmental Activities:</b>				
<b>Instruction:</b>				
Regular	\$11,609,217	\$193,728	\$75,997	(\$11,339,492)
Special	3,350,150	87,712	534,362	(2,728,076)
Vocational	0	0	266	266
Other	382,239	0	0	(382,239)
<b>Support Services:</b>				
Pupil	1,892,614	0	41,609	(1,851,005)
Instructional Staff	596,190	0	55,239	(540,951)
General Administration	58,176	0	0	(58,176)
School Administration	1,791,990	0	0	(1,791,990)
Fiscal	776,935	0	0	(776,935)
Business	142,058	0	0	(142,058)
Operations and Maintenance	1,516,726	15,370	45,142	(1,456,214)
Pupil Transportation	1,030,775	0	2,457	(1,028,318)
Central	13,979	0	0	(13,979)
Operation of Non-Instructional Services	1,142,929	538,931	351,413	(252,585)
Extracurricular Activities	708,893	232,585	2,974	(473,334)
Interest and Fiscal Charges	1,209,481	0	0	(1,209,481)
<b>Totals</b>	<b>\$26,222,352</b>	<b>\$1,068,326</b>	<b>\$1,109,459</b>	<b>(24,044,567)</b>

**General Revenues:**

Property Taxes Levied for:

General Purposes	12,091,038
Debt Service Purposes	1,255,583
Grants and Entitlements, Not Restricted	4,555,632
Revenue in Lieu of Taxes	398,575
Unrestricted Contributions	143,343
Investment Earnings	192,453
Other Revenues	98,563

Total General Revenues 18,735,187

Change in Net Position (5,309,380)

Net Position - Beginning of Year 5,742,281

Net Position - End of Year \$432,901

See accompanying notes to the basic financial statements.

Madeira City School District  
Balance Sheet  
Governmental Funds  
June 30, 2020

	General	Debt Service	Permanent Improvement	Other Governmental Funds	Total Governmental Funds
<b>Assets:</b>					
Equity in Pooled Cash and Investments	\$12,902,220	\$2,504,331	\$6,112,921	\$226,685	\$21,746,157
Restricted Cash and Investments	0	0	37,172	0	37,172
Equity in Pooled Cash and Investments with Fiscal Agent	235,521	0	0	0	235,521
<b>Receivables (Net):</b>					
Taxes	17,661,424	2,146,068	0	0	19,807,492
Accounts	7,732	0	5,000	0	12,732
Interest	21,552	0	0	0	21,552
Intergovernmental	505,073	19,822	0	74,296	599,191
Prepaid Items	24,241	0	0	1,007	25,248
<b>Total Assets</b>	<b>31,357,763</b>	<b>4,670,221</b>	<b>6,155,093</b>	<b>301,988</b>	<b>42,485,065</b>
<b>Liabilities:</b>					
Accounts Payable	42,343	0	0	11,414	53,757
Accrued Wages and Benefits	2,540,893	0	0	106,007	2,646,900
Compensated Absences	12,922	0	0	0	12,922
Contracts Payable	0	0	342,339	0	342,339
Retainage Payable	0	0	37,172	0	37,172
<b>Total Liabilities</b>	<b>2,596,158</b>	<b>0</b>	<b>379,511</b>	<b>117,421</b>	<b>3,093,090</b>
<b>Deferred Inflows of Resources:</b>					
Property Taxes	15,696,424	1,931,068	0	0	17,627,492
Investment Earnings	5,862	0	0	0	5,862
Grants	0	0	0	46,404	46,404
Revenue in Lieu of Taxes	505,073	19,822	0	0	524,895
<b>Total Deferred Inflows of Resources</b>	<b>16,207,359</b>	<b>1,950,890</b>	<b>0</b>	<b>46,404</b>	<b>18,204,653</b>
<b>Fund Balances:</b>					
Nonspendable	24,241	0	0	1,007	25,248
Restricted	0	2,719,331	0	175,908	2,895,239
Assigned	576,465	0	5,775,582	0	6,352,047
Unassigned	11,953,540	0	0	(38,752)	11,914,788
<b>Total Fund Balances</b>	<b>12,554,246</b>	<b>2,719,331</b>	<b>5,775,582</b>	<b>138,163</b>	<b>21,187,322</b>
<b>Total Liabilities, Deferred Inflows and Fund Balances</b>	<b>\$31,357,763</b>	<b>\$4,670,221</b>	<b>\$6,155,093</b>	<b>\$301,988</b>	<b>\$42,485,065</b>

See accompanying notes to the basic financial statements.

Madeira City School District  
 Reconciliation of Total Governmental Fund Balance to  
 Net Position of Governmental Activities  
 June 30, 2020

---

Total Governmental Fund Balance \$21,187,322

Amounts reported for governmental activities in the  
 statement of net position are different because:

Capital assets used in governmental activities are not financial  
 resources and, therefore, are not reported in the funds.

Capital assets used in the operation of Governmental Funds 25,747,714

Other long-term assets are not available to pay for current-  
 period expenditures and, therefore, are deferred in the funds.

Delinquent Property Taxes	666,351	
Interest	5,862	
Intergovernmental	46,404	
		718,617

In the statement of net position interest payable is accrued when  
 incurred; whereas, in the governmental funds interest is  
 reported as a liability only when it will require the use of  
 current financial resources.

(59,025)

Some liabilities reported in the statement of net position do not  
 require the use of current financial resources and, therefore,  
 are not reported as liabilities in governmental funds.

Compensated Absences (1,071,448)

Deferred charge on refunding associated with long-term liabilities  
 that are not reported in the funds.

75,596

Deferred outflows and inflows or resources related to pensions and OPEB  
 are applicable to future periods and, therefore, are not  
 reported in the funds.

Deferred outflows of resources related to pensions	4,669,217	
Deferred inflows of resources related to pensions	(1,138,745)	
Deferred outflows of resources related to OPEB	491,931	
Deferred outflows of resources related to OPEB	(2,286,261)	
		1,736,142

Long-term liabilities and net OPEB assets are not available to pay for  
 current period expenditures and are not due and payable in the  
 current period and, therefore, are not reported in the funds.

Net OPEB Asset	1,406,144	
Net Pension Liability	(23,470,866)	
Net OPEB Liability	(2,015,994)	
Other Amounts	(23,821,301)	
		(47,902,017)

Net Position of Governmental Activities \$432,901

See accompanying notes to the basic financial statements.

Madeira City School District  
Statement of Revenues, Expenditures  
and Changes in Fund Balance  
Governmental Funds  
For the Fiscal Year Ended June 30, 2020

	General	Debt Service	Permanent Improvement	Other Governmental Funds	Total Governmental Funds
<b>Revenues:</b>					
Property and Other Taxes	\$12,035,389	\$1,255,832	\$0	\$0	\$13,291,221
Tuition and Fees	272,216	0	0	0	272,216
Investment Earnings	161,350	0	19,852	395	181,597
Intergovernmental	4,509,984	252,642	0	864,257	5,626,883
Extracurricular Activities	128,616	0	0	103,969	232,585
Charges for Services	548,154	0	0	0	548,154
Revenue in Lieu of Taxes	388,664	9,911	0	0	398,575
Other Revenues	155,311	15,202	15,000	86,966	272,479
<b>Total Revenues</b>	<b>18,199,684</b>	<b>1,533,587</b>	<b>34,852</b>	<b>1,055,587</b>	<b>20,823,710</b>
<b>Expenditures:</b>					
<b>Current:</b>					
<b>Instruction:</b>					
Regular	9,848,342	0	0	55,421	9,903,763
Special	2,702,129	0	0	324,815	3,026,944
Other	326,843	0	0	0	326,843
<b>Support Services:</b>					
Pupil	1,663,763	0	0	44,893	1,708,656
Instructional Staff	536,294	0	0	46,632	582,926
General Administration	58,176	0	0	0	58,176
School Administration	1,565,587	0	0	0	1,565,587
Fiscal	681,570	23,477	0	26,000	731,047
Business	70,793	0	0	0	70,793
Operations and Maintenance	1,367,960	0	37,947	48,843	1,454,750
Pupil Transportation	1,029,093	0	0	0	1,029,093
Central	13,979	0	0	0	13,979
Operation of Non-Instructional Services	724,079	0	0	336,699	1,060,778
Extracurricular Activities	458,886	0	0	202,327	661,213
Capital Outlay	16,467	0	1,082,807	0	1,099,274
<b>Debt Service:</b>					
Principal Retirement	225,445	520,000	0	0	745,445
Interest and Fiscal Charges	10,584	1,419,309	0	0	1,429,893
<b>Total Expenditures</b>	<b>21,299,990</b>	<b>1,962,786</b>	<b>1,120,754</b>	<b>1,085,630</b>	<b>25,469,160</b>
<b>Excess of Revenues Over (Under) Expenditures</b>	<b>(3,100,306)</b>	<b>(429,199)</b>	<b>(1,085,902)</b>	<b>(30,043)</b>	<b>(4,645,450)</b>
<b>Other Financing Sources (Uses):</b>					
Proceeds of Capital Leases	235,519	0	0	0	235,519
Issuance of Long-Term Capital-Related Debt	0	0	3,000,000	0	3,000,000
Transfers In	0	0	3,350,000	0	3,350,000
Transfers (Out)	(3,350,000)	0	0	0	(3,350,000)
<b>Total Other Financing Sources (Uses)</b>	<b>(3,114,481)</b>	<b>0</b>	<b>6,350,000</b>	<b>0</b>	<b>3,235,519</b>
<b>Net Change in Fund Balance</b>	<b>(6,214,787)</b>	<b>(429,199)</b>	<b>5,264,098</b>	<b>(30,043)</b>	<b>(1,409,931)</b>
<b>Fund Balance - Beginning of Year</b>	<b>18,769,033</b>	<b>3,148,530</b>	<b>511,484</b>	<b>168,206</b>	<b>22,597,253</b>
<b>Fund Balance - End of Year</b>	<b>\$12,554,246</b>	<b>\$2,719,331</b>	<b>\$5,775,582</b>	<b>\$138,163</b>	<b>\$21,187,322</b>

See accompanying notes to the basic financial statements.

Madeira City School District  
 Reconciliation of the Statement of Revenues, Expenditures, and Changes  
 in Fund Balance of Governmental Funds to the Statement of Activities  
 For the Fiscal Year Ended June 30, 2020

---

Net Change in Fund Balance - Total Governmental Funds (\$1,409,931)

Amounts reported for governmental activities in the statement of activities are different because:

Governmental funds report capital asset additions as expenditures.

However, in the statement of activities, the cost of those assets is allocated over their estimated useful lives as depreciation expense. This is the amount of the difference between capital asset additions and depreciation in the current period.

Capital assets used in governmental activities	993,642	
Depreciation Expense	(1,222,885)	
		(229,243)

Governmental funds only report the disposal of assets to the extent proceeds are received from the sale. In the statement of activities, a gain or loss is reported for each disposal. The amount of the proceeds must be removed and the gain or loss on the disposal of capital assets must be recognized. This is the amount of the difference between the proceeds and the gain or loss.

(15,945)

Governmental funds report district pension and OPEB contributions as expenditures. However in the Statement of Activities, the cost of pension and OPEB benefits earned net of employee contributions is reported as pension and OPEB expense.

District Pension Contributions	1,859,865	
Pension Expense	(3,510,291)	
District OPEB Contributions	53,156	
OPEB Expense	382,021	
		(1,215,249)

Revenues in the statement of activities that do not provide current financial resources are not reported as revenues in the funds.

Delinquent Property Taxes	55,400	
Interest	(4,346)	
Intergovernmental	38,208	
		89,262

Repayment of bond principal, capital appreciation bonds principal and interest are expenditures in the governmental funds, but the repayment reduces long-term liabilities in the statement of net position.

1,475,445

In the statement of activities interest expense is accrued when incurred; whereas, in governmental funds an interest expenditure is reported when due.

(1,864)

Some expenses reported in the statement of activities do not require the use of current financial resources and, therefore, are not reported as expenditures in governmental funds.

Compensated Absences	(258,612)	
Amortization of Deferred Charge on Refunding	(9,450)	
Bond Accretion	(498,274)	
		(766,336)

Proceeds from debt issues are an other financing source in the funds, but a debt issue increases long-term liabilities in the statement of net position.

(3,235,519)

Change in Net Position of Governmental Activities

(\$5,309,380)

See accompanying notes to the basic financial statements.

Madeira City School District  
Statement of Fiduciary Assets and Liabilities  
Fiduciary Fund  
June 30, 2020

---

	<u>Agency</u>
Assets:	
Equity in Pooled Cash and Investments	<u>\$111,966</u>
Total Assets	<u>111,966</u>
Liabilities:	
Accounts Payable	31
Other Liabilities	<u>111,935</u>
Total Liabilities	<u>\$111,966</u>

See accompanying notes to the basic financial statements.

**Madeira City School District**  
**Notes to the Basic Financial Statements**  
**For The Fiscal Year Ended June 30, 2020**

---

**Note 1 - Description of the District**

---

The District was chartered by the Ohio State Legislature. In 1949 state laws were enacted to create local Boards of Education. Today, the District operates under current standards prescribed by the Ohio State Board of Education as provided in division (D) of Section 3301.07 and Section 119.01 of the Ohio Revised Code.

The District operates under a locally elected five member Board form of government and provides educational services as authorized by its charter or further mandated by state and/or federal agencies. This Board controls the District's instructional and support facilities staffed by 66 non-certificated personnel and 119 certificated teaching and 9 administrative personnel to provide services to students and other community members.

The District currently operates 1 elementary school (grades K-4), 1 middle school (grades 5-8), and 1 senior high school (grades 9-12).

**Reporting Entity**

In accordance with Governmental Accounting Standards Board [GASB] Statement 14, as amended by GASB Statement 39 and GASB Statement 61, the financial reporting entity consists of a primary government. The District is a primary government because it is a special-purpose government that has a separately elected governing body, is legally separate, and is fiscally independent of other state and local governments.

There are no component units combined with the District for financial statement presentation purposes, and it is not included in any other governmental reporting entity. Consequently, the District's financial statements include only the funds of those organizational entities for which its elected governing body is financially accountable. The District's major operations include education, pupil transportation, food service, and maintenance of District facilities. The District contracts with outside organizations for pupil transportation and food service.

The following activities are included within the reporting entity:

Within the District boundaries, St. Gertrude Elementary School is operated as a private school. Current State legislation provides funding to this parochial school. These monies are received and disbursed on behalf of the parochial schools by the Treasurer of the District, as directed by the parochial schools. The activity of this State money by the District is reflected in a special revenue fund for financial reporting purposes.

The District is associated with five organizations, of which four are defined as jointly governed organizations and the fifth is a group insurance consortium. These organizations include the Unified Purchasing Cooperative of Ohio River Valley, Great Oaks Institute of Technology and Career Development, Hamilton/Clermont Cooperative Association/Computer Consortium, the Greater Cincinnati Insurance Consortium and the Southwestern Ohio Educational Purchases Council (Workers' Compensation Group Rating Program).



**Madeira City School District**  
**Notes to the Basic Financial Statements**  
**For The Fiscal Year Ended June 30, 2020**

---

**Note 2 - Summary of Significant Accounting Policies**

---

The financial statements of the District have been prepared in conformity with generally accepted accounting principles (GAAP) as applied to governmental units. The Governmental Accounting Standards Board (GASB) is the accepted standard-setting body for establishing governmental accounting and financial reporting principles. The most significant of the District's accounting policies are described below.

**Measurement Focus**

**Government-wide Financial Statements**

The District's basic financial statements consist of government-wide statements, including a statement of net position and a statement of activities and fund financial statements which provide a more detailed level of financial information.

The government-wide statements are prepared using the economic resources measurement focus. All assets and liabilities associated with the operation of the District are included on the statement of net position. Fiduciary Funds are not included in entity-wide statements.

The government-wide statement of activities presents a comparison between direct expenses and program revenues for each function or program of the District's governmental activities. Direct expenses are those that are specifically associated with a service, program or department and therefore clearly identifiable to a particular function. Program revenues include charges paid by the recipient of the goods or services offered by the program and contributions that are restricted to meeting the operational or capital requirements of a particular program. Revenues which are not classified as program revenues are presented as general revenues of the District, with certain limited exceptions. The comparison of direct expenses with program revenues identifies the extent to which each governmental function is self-financing or draws from the general revenues of the District.

**Fund Financial Statements**

All governmental funds are accounted for using a flow of current financial resources measurement focus. With this measurement focus, only current assets and current liabilities generally are included on the balance sheet. The statement of revenues, expenditures and changes in fund balances reports on the sources (i.e., revenues and other financing sources) and uses (i.e., expenditures and other financing uses) of current financial resources. This approach differs from the manner in which the governmental activities of the government-wide financial statements are prepared. Governmental fund financial statements therefore include reconciliation with brief explanations to better identify the relationship between the government-wide statements and the statements for governmental funds.

**Fund Accounting**

The District uses funds to maintain its financial records during the fiscal year. Fund accounting is designed to demonstrate legal compliance and to aid management by segregating transactions related to certain District functions or activities. A fund is defined as a fiscal and accounting entity with a self-balancing set of accounts. The various funds of the District are grouped into the categories governmental and fiduciary.

## **Governmental Funds**

Governmental funds focus on the sources, uses and balances of current financial resources. Expendable assets are assigned to the various governmental funds according to the purposes for which they may or must be used. Current liabilities are assigned to the fund from which they will be paid. The difference between governmental fund assets and deferred outflows, and liabilities and deferred inflows is reported as fund balance. The following are the District's major governmental funds:

General Fund - The general fund is used to account for all financial resources except those required to be accounted for in another fund. The general fund balance is available for any purpose provided it is expended or transferred according to the general laws of Ohio.

Debt Service Fund – The debt service fund is used to account for the accumulation of resources for the payment of general obligation bond principal and interest and certain other long-term obligations from governmental resources when the District is obligated in some manner for the payment.

Permanent Improvement Fund – The permanent fund is used to account for financial resources, to be used to maintain the District's facilities as well as provide for major equipment and instructional material purchases.

## **Fiduciary Funds**

Fiduciary fund reporting focuses on net position and changes in net position. The fiduciary fund category is split into four classifications: pension trust funds, investment trust funds, private purpose trust funds and agency funds. Trust funds are used to account for assets held by the District under a trust agreement for individuals, private organizations, or other governments and are therefore not available to support the District's own programs. Agency funds are custodial in nature (assets equal liabilities) and do not involve measurement of results of operations. The District has a Student Activity agency fund which accounts for assets and liabilities generated by student managed activities. The District also has an OHSAA Tournament agency fund which accounts for assets and liabilities generated by high school athletic programs.

## **Basis of Accounting**

Basis of accounting determines when transactions are recorded in the financial records and reported on the financial statements. Government-wide financial statements are prepared using the accrual basis of accounting. Governmental funds use the modified accrual basis of accounting. Fiduciary funds also use the accrual basis of accounting. Differences in the actual and the modified accrual basis of accounting arise in the recognition of revenue, the recording of deferred inflows, and in the presentation of expenses versus expenditures.

### Revenues – Exchange and Non-exchange Transactions

Revenue resulting from exchange transactions, in which each party gives and receives essentially equal value, is recorded on the accrual basis when the exchange takes place. On a modified accrual basis, revenue is recorded in the fiscal year in which the resources are measurable and become available. Available means that the resources will be collected within the current fiscal year or are expected to be collected soon enough thereafter to be used to pay liabilities of the current fiscal year. For the District, available means expected to be received within sixty days of fiscal year end.

**Madeira City School District**  
**Notes to the Basic Financial Statements**  
**For The Fiscal Year Ended June 30, 2020**

---

Nonexchange transactions, in which the District receives value without directly giving equal value in return, included property taxes, grants, entitlements and donations. On an accrual basis, revenue from property taxes is recognized in the fiscal year for which the taxes are levied. Revenue from grants, entitlements and donations is recognized in the fiscal year in which all eligibility requirements have been satisfied. Eligibility requirements include timing requirements, which specify the year when the resources are required to be used or the year when use is first permitted, matching requirements, in which the District must provide local resources to be used for a specified purpose, and expenditure requirements, in which the resources are provided to the District on a reimbursement basis. On a modified accrual basis, revenue from nonexchange transactions must also be available before it can be recognized.

Under the modified accrual basis, the following revenue sources are considered to be both measurable and available at year end: property taxes available for advance, grants and interest.

Deferred Outflows/Inflows of Resources

In addition to assets, the statements of financial position will sometimes report a separate section for deferred outflows of resources. Deferred outflows of resources, represents a consumption of net position that applies to a future period and will not be recognized as an outflow of resources (expense/expenditure) until then. For the District, deferred outflows of resources include pension, a deferred charge on refunding, and other post employment benefits. These amounts are reported on the government-wide statement of net position. The deferred outflows of resources related to pension and OPEB are explained in Notes 9 and 10.

In addition to liabilities, the statements of financial position report a separate section for deferred inflows of resources. Deferred inflows of resources represent an acquisition of net position that applies to a future period and will not be recognized as an inflow of resources (revenue) until that time. For the District, deferred inflows of resources include property taxes, grants and other taxes, pension and OPEB, investment earnings and unavailable revenues. Property taxes represent amounts for which there is an enforceable legal claim as of June 30, 2020, but which were levied to finance year 2021 operations. These amounts have been recorded as deferred inflows on both the government-wide statement of net position and the governmental fund financial statements. Unavailable revenue is reported only on the governmental funds balance sheet, and represents receivables which will not be collected within the available period. For the District, unavailable revenue includes tax incremental financing (TIF). These amounts are deferred and recognized as inflows of resources in the period the amounts become available. TIF's have been recorded as deferred inflows on both the government-wide statement of net position and the governmental fund financial statements. Investment earnings have been recorded as deferred inflows on the governmental fund financial statements. Deferred inflows related to pension and OPEB are reported on the government-wide statement of net position. See Notes 9 and 10 for further explanation.

Unearned Revenue

Unearned revenue represents amounts under the accrual basis of accounting for which asset recognition criteria have been met, but for which revenue recognition criteria have not yet been met because such amounts have not yet been earned.

**Madeira City School District**  
**Notes to the Basic Financial Statements**  
**For The Fiscal Year Ended June 30, 2020**

---

Expenses/Expenditures

On the accrual basis of accounting, expenses are recognized at the time they are incurred. The fair value of donated commodities used during the year is reported in the operating statement as an expense with a like amount reported as donated commodities revenue.

The measurement focus of governmental fund accounting is on decreases in net financial resources (expenditures) rather than expenses. Expenditures are generally recognized in the accounting period in which the related fund liability is incurred, if measurable. Allocations of cost, such as depreciation and amortization, are not recognized in the governmental funds.

**Equity in Pooled Cash and Investments**

Cash received by the District is pooled for investment purposes. Interest in the pool is presented as "Equity in Pooled Cash and Investments" on the financial statements.

STAR Ohio (the State Treasury Asset Reserve of Ohio), is an investment pool managed by the State Treasurer's Office which allows governments within the State to pool their funds for investment purposes. STAR Ohio is not registered with the SEC as an investment company, but has adopted Governmental Accounting Standards Board (GASB), Statement No. 79, "Certain External Investment Pools and Pool Participants." The District measures their investment in STAR Ohio at the net asset value (NAV) per share provided by STAR Ohio. The NAV per share is calculated on an amortized cost basis that provides an NAV per share that approximates fair value.

There were no limitations or restrictions on any participant withdrawals due to redemption notice periods, liquidity fees, or redemption gates. However, 24 hours advance notice is appreciated for deposits and withdrawals of \$25 million or more. STAR Ohio reserves the right to limit the transaction to \$100 million per day, requiring the excess amount to be transacted the following business day(s), but only to the \$100 million limit. All accounts of the participant will be combined for these purposes.

Except for nonparticipating investment contracts, investments are reported at fair value which is based on quoted market prices. Nonparticipating investment contracts such as nonnegotiable certificates of deposits and repurchase agreements are reported at cost.

Following Ohio statutes, the Board has, by resolution, specified the funds to receive an allocation of interest earnings. Interest revenue credited to the permanent improvement fund during fiscal year 2020 amounted to \$19,852, \$161,350 for the general fund and \$395 for other governmental funds.

**Prepaid Items**

Payments made to vendors for services that will benefit periods beyond June 30, 2020 are recorded as prepaid items using the consumption method. A current asset for the prepaid amount is recorded at the time of purchase and expenditure/expense is reported in the year in which services are consumed.

**Capital Assets**

All capital assets are capitalized at cost (or estimated historical cost) and updated for additions and retirements during the year. Donated capital assets are recorded at their acquisition values as of the date received. The District maintains a capitalization threshold of five thousand dollars (\$5,000). The District does not possess any infrastructure. Improvements are capitalized; the costs of normal maintenance and repairs that do not add to the value of the asset or materially extend an asset's life are not.

**Madeira City School District**  
**Notes to the Basic Financial Statements**  
**For The Fiscal Year Ended June 30, 2020**

---

All reported capital assets are depreciated, except land and construction in progress. Improvements are depreciated over the remaining useful lives of the related capital assets. Depreciation is allocated using the straight-line method over the following useful lives:

<u>Description</u>	<u>Estimated Lives</u>
Buildings and Improvements	10 - 50 years
Equipment	5 - 20 years

**Compensated Absences**

The District reports compensated absences in accordance with the provisions of GASB Statement No. 16, "Accounting for Compensated Absences." Vacation benefits are accrued as a liability as the benefits are earned if the employees' rights to receive compensation are attributable to services already rendered and it is probable that the District will compensate the employees for the benefits through paid time off or some other means. The District records a liability for accumulated unused vacation time, when earned, for all eligible employees with more than one year of service.

Sick leave benefits are accrued as a liability using the vesting method. The entire compensated absence liability is reported on the government-wide financial statements.

For governmental fund financial statements, the current portion of unpaid compensated absences are recognized when due. The related liabilities are recorded in the account "compensated absences payable" in the fund from which the employees who have accumulated unpaid leave are paid. Compensated absences are reported in governmental funds only if they have matured.

The District's policies regarding compensated absences are determined by the state laws and/or policies. In summary, the policies are as follows:

<u>Vacation</u>	<u>Certified</u>	<u>Administrators</u>	<u>Non-Certificated Year Round Employees</u>
How earned	Not Eligible	15-20 days for each service year depending on length of service.	10-20 days for each service year depending on length of service.
Maximum Accumulation	Not Applicable	15-20 days	10-20 days
Vested	Not Applicable	As Earned	As Earned
Termination Entitlement	Not Applicable	Paid upon Termination	Paid upon Termination

**Madeira City School District**  
**Notes to the Basic Financial Statements**  
**For The Fiscal Year Ended June 30, 2020**

---

Sick Leave

How Earned	1 1/4 days per month of employment (15 days per year)	1 1/4 days per month of employment (15 days per year)	1 1/4 days per month of employment (15 days per year)
Regular Full Time			
Regular Part Time	4.6 hrs paid sick leave for 80 hrs of service	4.6 hrs paid sick leave for 80 hrs of service	4.6 hrs paid sick leave for 80 hrs of service

<u>Sick Leave</u>	<u>Certified</u>	<u>Administrators</u>	<u>Non-Certificated</u>
Maximum Accumulation	260	260	260
Vested	As Earned	As Earned	As Earned
Termination Entitlement	30% up to a max of 66 days	30% up to a max of 66 days	30% up to a max of 66 days

**Pensions/Other Postemployment Benefits (OPEB)**

For purposes of measuring the net pension/OPEB liability, deferred outflows of resources and deferred inflows of resources related to pensions/OPEB, and pension/OPEB expense, information about the fiduciary net position of the pension/OPEB plans and additions to/deductions from their fiduciary net position have been determined on the same basis as they are reported by the pension/OPEB plan. For this purpose, benefit payments (including refunds of employee contributions) are recognized when due and payable in accordance with the benefit terms. The pension/OPEB plans report investments at fair value.

**Net Position**

Net position represents the difference between assets and deferred outflows of resources, and liabilities and deferred inflows of resources. Net investment in capital assets consists of capital assets, net of accumulated depreciation, reduced by the outstanding balances of any borrowings used for the acquisition, construction or improvement of those assets. Net position is reported as restricted when there are limitations imposed on their use either through the enabling legislation adopted by the District or through external restrictions imposed by creditors, grantors or laws or regulations of other governments.

The District applies restricted resources when an expense is incurred for purposes for which both restricted and unrestricted net position are available. Of the District's \$2,912,226 in restricted net position, none were restricted by enabling legislation.

**Interfund Activity**

Exchange transactions between funds are reported as revenues in the seller funds and as expenditures/expenses in the purchaser funds. Flows of cash or goods from one fund to another without a requirement for repayment are reported as interfund transfers. Interfund transfers are

**Madeira City School District**  
**Notes to the Basic Financial Statements**  
**For The Fiscal Year Ended June 30, 2020**

---

reported as other financing sources/uses in governmental funds. Repayments from funds responsible for particular expenditures/expenses to the funds that initially paid for them are not presented on the financial statements.

On fund financial statements, receivables and payables resulting from short-term interfund loans are classified as "interfund receivables/payables". These amounts are eliminated in the governmental activities column on the Statement of Net Position.

As a general rule the effect of interfund (internal) activity has been eliminated from the government-wide statement of activities. The interfund services provided and used are not eliminated in the process of consolidation.

**Fund Balance**

In accordance with Governmental Accounting Standards Board Statement No. 54, *Fund Balance Reporting*, the District classifies its fund balance based on the purpose for which the resources were received and the level of constraint placed on the resources. The following categories are used:

Nonspendable – resources that are not in spendable form (inventory) or have legal or contractual requirements to maintain the balance intact.

Restricted – resources that have external purpose restraints imposed on them by providers, such as creditors, grantors, or other regulators.

Committed – resources that are constrained for specific purposes that are internally imposed by the government at its highest level of decision making authority, the Board of Education.

Assigned – resources that are intended to be used for specific purposes as approved through the District's formal purchasing procedure by the Treasurer.

Unassigned – residual fund balance within the General Fund that is not restricted, committed, or assigned. In other governmental funds, the unassigned classification is used only to report a deficit balance resulting from incurred expenses for specific purposes exceeding amounts which had been restricted, committed or assigned for said purposes.

The District applies restricted resources first when expenditures are incurred for purposes for which either restricted or unrestricted (committed, assigned, and unassigned) amounts are available. Similarly, within unrestricted fund balance, committed amounts are reduced first followed by assigned, and then unassigned amounts when expenditures are incurred for purposes for which amounts in any of the unrestricted fund balance classifications could be used.

**Estimates**

The preparation of financial statements in conformity with generally accepted accounting principles requires management to make estimates and assumptions that affect the amounts reported in the financial statements and accompanying notes. Actual results may differ from those estimates.

**Note 3 - Equity in Pooled Cash and Investments**

---

The District maintains a cash and investment pool used by all funds. Each fund type's portion of this pool is displayed on the combined balance sheet as "Equity in Pooled Cash and Investments."

**Madeira City School District**  
**Notes to the Basic Financial Statements**  
**For The Fiscal Year Ended June 30, 2020**

---

State statute requires the classification of monies held by the District into three categories:

Active Monies - Those monies required to be kept in a "cash" or "near cash" status for immediate use by the District. Such monies must by law be maintained either as cash in the District treasury, in depository accounts payable or withdrawable on demand.

Inactive Monies – Those monies not required for use within the current two year period of designated depositories. Ohio law permits inactive monies to be deposited or invested as certificates of deposit maturing not later than the end of the current period of designated depositories, or as savings or deposit accounts, including, but not limited to passbook accounts.

Interim Monies – Those monies held by the District can be deposited or invested in the following securities:

1. United States Treasury bills, bonds, notes, or any other obligation or security issued by the United States Treasury, or any other obligation guaranteed as to principal and interest by the United States.
2. Bonds, notes, debentures, or any other obligation or security issued by any federal government agency or instrumentality including, but not limited to, the Federal National Mortgage Association, Federal Home Loan Bank, Federal Farm Credit Bank, Federal Home Loan Mortgage Corporation, and Government National Mortgage Association. All federal agency securities shall be direct issuances of federal government agencies or instrumentalities.
3. Written repurchase agreements in the securities listed above provided the market value of the securities subject to the repurchase agreement must exceed the principal value of the agreement by at least two percent and be marked to market daily, and the term of the agreement must not exceed thirty days.
4. Bonds and other obligations of the State of Ohio, and with certain limitations including a requirement for maturity within ten years from the date of settlement, bonds and other obligations of political subdivisions of the State of Ohio, if training requirements have been met.
5. Time certificates of deposit or savings or deposit accounts including, but not limited to, passbook accounts.
6. No-load money market mutual funds consisting exclusively of obligations described in division (1) or (2) and repurchase agreements secured by such obligations, provided that investments in securities described in this division are made only through eligible institutions.
7. The State Treasurer's investment pool (STAR Ohio).
8. Certain bankers' acceptances for a period not to exceed one hundred eighty days) and commercial paper notes (for a period not to exceed two hundred seventy days) in an amount not to exceed 40 percent of the interim monies available for investment at any one time if training requirements have been met.



**Madeira City School District**  
**Notes to the Basic Financial Statements**  
**For The Fiscal Year Ended June 30, 2020**

---

Protection of the School District's deposits is provided by the Federal Deposit Insurance Corporation (FDIC), by eligible securities pledged by the financial institution as security for repayment, or by the financial institutions participation in the Ohio Pooled Collateral System (OPCS), a collateral pool of eligible securities deposited with a qualified trustee and pledged to the Treasurer of State to secure the repayment of all public monies deposited in the financial institution.

Investments in stripped principal or interest obligations, reverse repurchase agreements, and derivatives are prohibited. The issuance of taxable notes for the purpose of arbitrage, the use of leverage, and short selling are also prohibited. Except as noted above, an investment must mature within five years from the date of purchase, unless matched to a specific obligation or debt of the School District, and must be purchased with the expectation that it will be held to maturity.

**Deposits**

Custodial credit risk for deposits is the risk that in the event of bank failure, the District will not be able to recover deposits or collateral securities that are in the possession of an outside party. As of June 30, 2020, \$11,903,939 of the District's bank balance of \$12,153,944 was exposed to custodial credit risk because it was uninsured and collateralized.

The District has no deposit policy for custodial risk beyond the requirements of State statute. Ohio law requires that deposits either be insured or be protected by:

Eligible securities pledged to the District and deposited with a qualified trustee by the financial institution as security for repayment whose market value at all times shall be at least 105% of the deposits being secured; or

Participation in the Ohio Pooled Collateral System (OPCS), a collateral pool of eligible securities deposited with a qualified trustee and pledged to the Treasurer of State to secure the repayment of all public monies deposited in the financial institution. OPCS requires the total market value of the securities pledged to be 102% of the deposits being secured or a rate set by the Treasurer of State.

**Investments**

As of June 30, 2020, the District had the following investments:

Investment Type	Fair Value	Fair Value Hierarchy	Weighted Average Maturity (Years)
Federal Home Loan Bank	\$201,660	Level 2	3.15
Federal National Mortgage Association	455,956	Level 2	0.93
Federal Farm Credit Bank	451,964	Level 2	3.33
Negotiable CDs	3,195,566	Level 2	1.73
Commercial Paper	93,312	Level 2	0.00
Money Market Funds	464,725	N/A	0.00
U.S. Treasury Notes	100,151	Level 1	0.08
STAR Ohio	5,115,557	N/A	0.13
Total Fair Value	<u>\$10,078,891</u>		

Portfolio Weighted Average Maturity 0.86

The District categorizes its fair value measurements within the fair value hierarchy established by generally accepted accounting principles. The hierarchy is based on the valuation inputs used to measure the fair value of the asset. Level 1 inputs are quoted prices in active markets for identical

**Madeira City School District**  
**Notes to the Basic Financial Statements**  
**For The Fiscal Year Ended June 30, 2020**

---

assets. Level 2 inputs are significant other observable inputs. Inputs to the valuation techniques used in fair the measurement for Level 2 include quoted prices for similar assets or liabilities in active markets, quoted prices for identical or similar assets or liabilities in inactive markets, inputs other than quoted prices that are observable for the asset or liability, or inputs that are derived principally from or corroborated by observable market data by correlation or other means. Level 3 inputs are significant unobservable inputs. The above table identifies the District's recurring fair value measurements as of June 30, 2020. STAR Ohio is reported at its share price (Net Asset value per share).

Interest Rate Risk - In accordance with the investment policy, the District manages its exposure to declines in fair values by limiting the weighted average maturity of its investment portfolio to three years.

Credit Risk – It is the District's policy to limit its investments that are not obligations of the U.S. Government or obligations explicitly guaranteed by the U.S. Government to investments which have the highest credit quality rating issued by nationally recognized statistical rating organizations. The District's investments in Federal Home Loan Bank, Federal Farm Credit Bank, Federal National Mortgage Association, and Treasury Notes were rated AAA by Standard & Poor's and Fitch ratings and Aaa by Moody's Investment Service. The District's investments in Commercial Paper was rated A-1+ by Standard & Poor's ratings and P-1 by Moody's Investment Service. The District's investments in STAR Ohio were rated AAAM by Standard & Poor's. Money Market Funds and Negotiable CDs were not rated.

Concentration of Credit Risk – The District's investment policy allows investments in Federal Agencies or Instrumentalities. The District has invested 2% in Federal Home Loan Bank, 32% in Negotiable CDs, 4% in Federal National Mortgage Association, 4% in Federal Farm Credit Bank, 1% in Commercial Paper, 5% in Money Market Funds, 51% in STAR Ohio, and 1% in U.S. Treasury Notes.

Custodial Credit Risk is the risk that in the event of the failure of the counterparty, the District will not be able to recover the value of its investments or collateral securities that are in the possession of an outside party. All of the District's securities are either insured and registered in the name of the District or at least registered in the name of the District.

**Note 4 - Property Taxes**

---

Property taxes are levied and assessed on a calendar year basis. Second half distributions occur in a new fiscal year. Property taxes include amounts levied against all real, public utility, and tangible personal (used in business) property located in the District. Real property taxes are levied after April 1 on the assessed value listed as of the prior January 1, the lien date. Public utility property taxes attached as a lien on December 31 of the prior year, were levied April 1 and are collected with real property taxes. Assessed values for real property taxes are established by State law at 35 percent of appraised market value. All property is required to be revalued every six years. Public utility property taxes are assessed on tangible personal property at 88 percent of true value (with certain exceptions) and on real property at 35 percent of true value.

Tangible personal property tax revenue received during calendar year 2020 (other than public utility property tax) represents the collection of 2020 taxes levied against local and interexchange telephone companies. Tangible personal property tax on business inventory, manufacturing machinery and equipment, and furniture and fixtures is no longer levied and collected. Payments by multi-county taxpayers are due September 20. Single county taxpayers may pay annually or semi-annually. If paid

**Madeira City School District**  
**Notes to the Basic Financial Statements**  
**For The Fiscal Year Ended June 30, 2020**

---

annually, payment is due April 30; if paid semi-annually, the first payment is due April 30, with the remainder payable by September 20. Tangible personal property taxes paid by April 30 are usually received by the School District prior to June 30.

Real property taxes are payable annually or semi-annually. If paid annually, payment is due December 31; if paid semi-annually, the first payment is due December 31 with the remainder payable by June 20. Under certain circumstances, State statute permits alternate payment dates to be established. Tangible personal property taxes paid by multi-county taxpayers are due September 20. Single county taxpayers may pay annually or semi-annually. If paid annually, payment is due April 30; if paid semi-annually, the first payment is due April 30, with the remainder payable by September 20. The District receives property taxes from Hamilton County. The County Auditor periodically advances to the District its portion of the taxes collected. Second-half real property tax payments collected by the County by June 30, 2020, are available to finance fiscal year 2021 operations. The amount available for advance can vary based on the date the tax bills are sent.

Accrued property taxes receivable represents delinquent taxes outstanding and real property, tangible personal property, and public utility taxes that became measurable as of June 30, 2020. Although total property tax collections for the next fiscal year are measurable, only the amount available as an advance at June 30 is intended to finance current fiscal year operations. The receivable is therefore offset by a credit to deferred inflows for that portion not intended to finance \$1,965,000 in the General Fund and \$215,000 in the Debt Service Fund.

The assessed value, by property classification, upon which taxes collected in 2020 were based as follows:

	<u>Amount</u>
Agricultural/Residential and Other Real Estate	\$376,681,280
Public Utility Personal	<u>8,843,420</u>
Total	<u><u>\$385,524,700</u></u>

**Note 5 – Receivables**

---

Receivables at June 30, 2020, consisted of taxes, accounts, interest, and intergovernmental grants. All receivables are considered collectible in full due to the ability to foreclose for the nonpayment of taxes, the stable condition of State programs, and the current year guarantee of federal funds.

***This Space Intentionally Left Blank***

**Madeira City School District**  
**Notes to the Basic Financial Statements**  
**For The Fiscal Year Ended June 30, 2020**

**Note 6 - Capital Assets**

Capital asset activity for the fiscal year ended June 30, 2020 was as follows:

	<u>Beginning Balance</u>	<u>Additions</u>	<u>Deletions</u>	<u>Ending Balance</u>
Governmental Activities				
<i>Capital Assets, not being depreciated:</i>				
Land	\$1,233,381	\$0	\$0	\$1,233,381
Construction in Progress	<u>152,957</u>	<u>806,830</u>	<u>152,957</u>	<u>806,830</u>
Total Capital Assets, not being depreciated	1,386,338	806,830	152,957	2,040,211
<i>Capital Assets, being depreciated:</i>				
Buildings and Improvements	37,147,439	339,769	37,175	37,450,033
Equipment	<u>1,235,012</u>	<u>0</u>	<u>159,601</u>	<u>1,075,411</u>
<i>Total Capital Assets, being depreciated:</i>	<u>38,382,451</u>	<u>339,769</u>	<u>196,776</u>	<u>38,525,444</u>
Totals at Historical Cost	<u>39,768,789</u>	<u>1,146,599</u>	<u>349,733</u>	<u>40,565,655</u>
Less Accumulated Depreciation:				
Buildings and Improvements	12,650,314	1,198,424	26,024	13,822,714
Equipment	<u>1,125,573</u>	<u>24,461</u>	<u>154,807</u>	<u>995,227</u>
Total Accumulated Depreciation	<u>13,775,887</u>	<u>1,222,885</u>	<u>180,831</u>	<u>14,817,941</u>
Governmental Activities Capital Assets, Net	<u>\$25,992,902</u>	<u>(\$76,286)</u>	<u>\$168,902</u>	<u>\$25,747,714</u>

Depreciation expense was charged to governmental functions as follows:

Instruction:	
Regular	\$1,023,653
Special	45,034
Other Instruction	55,396
Support Services:	
Business	67,036
Operations and Maintenance	26,185
Extracurricular Activities	<u>5,581</u>
Total Depreciation Expense	<u>\$1,222,885</u>

**Madeira City School District**  
**Notes to the Basic Financial Statements**  
**For The Fiscal Year Ended June 30, 2020**

**Note 7 - Long-Term Liabilities**

The change in the District's long-term obligations during the year consists of the following:

	Rate	Maturity Dates	Beginning Balance	Additions	Deletions	Ending Balance	Due In One Year
<b>Governmental Activities:</b>							
General Obligation Bonds:							
2006 School Improvement Refunding Bonds -							
Current Interest	4.10%	12/1/32	\$9,605,000	\$0	\$0	\$9,605,000	\$0
Capital Appreciation	4.00%	12/1/20	959,946	0	(495,000)	464,946	464,946
Accretion of Interest		12/1/20	641,852	498,274	(730,000)	410,126	0
2017 Refunding -							
Current Interest	1.85%	12/1/27	10,015,000	0	(25,000)	9,990,000	25,000
2020 Bonds - Auditorium Reno	2.08%		0	3,000,000	0	3,000,000	186,000
Total General Obligation Bonds			<u>21,221,798</u>	<u>3,498,274</u>	<u>(1,250,000)</u>	<u>23,470,072</u>	<u>675,946</u>
Capital Leases:							
2017 Technology Lease/Purchase	2.38%	3/1/20	49,870	0	(49,870)	0	0
2018 Technology Lease/Purchase	1.69%	3/1/17	125,497	0	(61,679)	63,818	63,818
2019 New Lease	3.07%	3/15/22	165,788	0	(53,614)	112,174	55,246
2020 Technology Lease/Purchase	1.59%		0	235,519	(60,282)	175,237	57,492
Total Capital Leases			<u>341,155</u>	<u>235,519</u>	<u>(225,445)</u>	<u>351,229</u>	<u>176,556</u>
Net Pension Liabilities							
STRS			18,635,897	139,188	0	18,775,085	0
SERS			4,415,872	279,909	0	4,695,781	0
Total Net Pension Liability			<u>23,051,769</u>	<u>419,097</u>	<u>0</u>	<u>23,470,866</u>	<u>0</u>
Net OPEB Liabilities							
STRS			0	0	0	0 (a)	0
SERS			2,160,169	0	(144,175)	2,015,994	0
Total Net OPEB Liability			<u>2,160,169</u>	<u>0</u>	<u>(144,175)</u>	<u>2,015,994</u>	<u>0</u>
Total Long-Term Liabilities			<u>46,774,891</u>	<u>4,152,890</u>	<u>(1,619,620)</u>	<u>49,308,161</u>	<u>852,502</u>
Compensated Absences			<u>906,529</u>	<u>350,519</u>	<u>(172,678)</u>	<u>1,084,370</u>	<u>145,613</u>
Total Governmental Activities			<u>\$47,681,420</u>	<u>\$4,503,409</u>	<u>(\$1,792,298)</u>	<u>\$50,392,531</u>	<u>\$998,115</u>

(a) OPEB for STRS has a Net OPEB asset in the amount of \$1,406,144 as of June 30, 2020.

General obligation bonds will be paid from the debt service fund. Capital leases will be paid from the general fund. Compensated absences will be paid from the fund from which the person is paid.

There is no repayment schedule for the net pension liability and net OPEB liability; however, employer pension and OPEB contributions are made from the fund benefitting from their service.

Principal and interest requirements to retire general obligation debt outstanding at year end are as follows:

*This Space Intentionally Left Blank*

**Madeira City School District**  
**Notes to the Basic Financial Statements**  
**For The Fiscal Year Ended June 30, 2020**

Fiscal Year Ending June 30	General Obligation Bonds			Capital Appreciation Bonds		
	Principal	Interest	Total	Principal	Interest	Total
2021	\$211,000	\$736,513	\$947,513	\$464,946	\$775,000	\$1,239,946
2022	1,455,000	735,305	2,190,305	0	0	0
2023	1,504,000	707,569	2,211,569	0	0	0
2024	1,553,000	678,918	2,231,918	0	0	0
2025	1,607,000	649,305	2,256,305	0	0	0
2026-2030	9,081,000	2,644,905	11,725,905	0	0	0
2031-2035	7,184,000	560,782	7,744,782	0	0	0
Total	<u>\$22,595,000</u>	<u>\$6,713,297</u>	<u>\$29,308,297</u>	<u>\$464,946</u>	<u>\$775,000</u>	<u>\$1,239,946</u>

**Note 8 - Capital Leases**

The District has capital leases for various technology equipment and computers.

The leases meet the criteria of capital lease, which defines a capital lease generally as one that transfers benefits and risks of ownership to the lessee. Capital lease payments will be made from the General Fund.

The following is a schedule of the future minimum lease payments required under the capital lease and the present value of the minimum lease payments as of fiscal year end.

Fiscal Year Ending June 30,	Long-Term Debt
2021	\$182,183
2022	117,069
2023	60,282
Total Minimum Lease Payments	359,534
Less: Amount Representing Interest	(8,305)
Present Value of Minimum Lease Payments	<u>\$351,229</u>

Capital assets acquired under the capital leases are as follows:

Equipment	\$711,349
-----------	-----------

**Note 9 - Defined Benefit Pension Plans**

The Statewide retirement systems provide both pension benefits and other postemployment benefits (OPEB).

**Net Pension Liability/Net OPEB Liability (Asset)**

Pensions and OPEB are a component of exchange transactions between an employer and its employees of salaries and benefits for employee services. Pensions/OPEB are provided to an employee on a deferred payment basis as part of the total compensation package offered by an employer for employee services each financial period.

**Madeira City School District**  
**Notes to the Basic Financial Statements**  
**For The Fiscal Year Ended June 30, 2020**

---

The net pension/OPEB liability (asset) represent the employer’s proportionate share of each pension/OPEB plan’s collective actuarial present value of projected benefit payments attributable to past periods of service, net of each pension/OPEB plan’s fiduciary net position. The net pension/OPEB liability (asset) calculation is dependent on critical long-term variables, including estimated average life expectancies, earnings on investments, cost of living adjustments and others. While these estimates use the best information available, unknowable future events require adjusting these estimates annually.

Ohio Revised Code limits the employer’s obligation for this liability to annually required payments. The employer cannot control benefit terms or the manner in which pensions/OPEB are financed; however, the employer does receive the benefit of employees’ services in exchange for compensation including pension and OPEB.

GASB 68/75 assumes the liability is solely the obligation of the employer, because (1) they benefit from employee services; and (2) State statute requires funding to come from these employers. All pension contributions to date have come solely from these employers (which also includes pension costs paid in the form of withholdings from employees). The retirement systems may allocate a portion of the employer contributions to provide for these OPEB benefits. In addition, health care plan enrollees pay a portion of the health care costs in the form of a monthly premium. State statute requires the retirement systems to amortize unfunded pension liabilities within 30 years. If the pension amortization period exceeds 30 years, each retirement system’s board must propose corrective action to the State legislature. Any resulting legislative change to benefits or funding could significantly affect the net pension/OPEB liability (asset). Resulting adjustments to the net pension/OPEB liability (asset) would be effective when the changes are legally enforceable. The Ohio Revised Code permits, but does not require the retirement systems to provide healthcare to eligible benefit recipients.

The remainder of this note includes the required pension disclosures. See Note 10 for the required OPEB disclosures.

**Plan Description - School Employees Retirement System (SERS)**

**Plan Description**

Non-teaching employees participate in SERS, a cost-sharing multiple-employer defined benefit pension plan administered by SERS. SERS provides retirement, disability and survivor benefits, annual cost-of-living adjustments, and death benefits to plan members and beneficiaries. Authority to establish and amend benefits is provided by Ohio Revised Code Chapter 3309. SERS issues a publicly available, stand-alone financial report that includes financial statements, required supplementary information and detailed information about SERS’ fiduciary net position. That report can be obtained by visiting the SERS website at [www.ohsers.org](http://www.ohsers.org) under Employers/Audit Resources.

Age and service requirements for retirement are as follows:

	Eligible to Retire on or before August 1, 2017 *	Eligible to Retire on or after August 1, 2017
Full Benefits	Any age with 30 years of service credit	Age 67 with 10 years of service credit; or Age 57 with 30 years of service credit
Actuarially Reduced Benefits	Age 60 with 5 years of service credit Age 55 with 25 years of service credit	Age 62 with 10 years of service credit; or Age 60 with 25 years of service credit

\* Members with 25 years of service credit as of August 1, 2017, will be included in this plan.

**Madeira City School District**  
**Notes to the Basic Financial Statements**  
**For The Fiscal Year Ended June 30, 2020**

---

Annual retirement benefits are calculated based on final average salary multiplied by a percentage that varies based on years of service; 2.2 percent for the first thirty years of service and 2.5 percent for years of service credit over 30. Final average salary is the average of the highest three years of salary.

An individual whose benefit effective date is before April 1, 2018, is eligible for a cost of living adjustment (COLA) on the first anniversary date of the benefit. Beginning April 1, 2018, new benefit recipients must wait until the fourth anniversary of their benefit for COLA eligibility. The COLA is added each year to the base benefit amount on the anniversary date of the benefit. A three-year COLA suspension is in effect for all benefit recipients for the years 2018, 2019, and 2020. Upon resumption of the COLA, it will be indexed to the percentage increase in the CPI-W, not to exceed 2.5 percent and with a floor of 0 percent.

**Funding Policy**

Plan members are required to contribute 10 percent of their annual covered salary and the employer is required to contribute 14 percent of annual covered payroll. The contribution requirements of plan members and employers are established and may be amended by the SERS' Retirement Board up to statutory maximum amounts of 10 percent for plan members and 14 percent for employers. The Retirement Board, acting with the advice of the actuary, allocates the employer contribution rate among four of the System's funds (Pension Trust Fund, Death Benefit Fund, Medicare B Fund, and Health Care Fund). For the fiscal year ended June 30, 2020, the allocation to pension, death benefits, and Medicare B was 14.0 percent. For fiscal year 2020, the Retirement Board did not allocate any employer contribution to the Health Care Fund.

The contractually required contribution to SERS was \$393,849 for fiscal year 2020. Of this amount \$52,031 is reported as accrued wages and benefits.

**Plan Description - State Teachers Retirement System (STRS)**

**Plan Description**

Licensed teachers and other faculty members participate in STRS Ohio, a cost-sharing multiple employer public employee system administered by STRS. STRS provides retirement and disability benefits to members and death and survivor benefits to beneficiaries. STRS issues a stand-alone financial report that includes financial statements, required supplementary information, and detailed information about STRS' fiduciary net position. That report can be obtained by writing to STRS, 275 E. Broad St., Columbus, OH 43215-3771, by calling (888) 227-7877, or by visiting the STRS Web site at [www.strsoh.org](http://www.strsoh.org).

New members have a choice of three retirement plans; a Defined Benefit (DB) Plan, a Defined Contribution (DC) Plan, and a Combined Plan. Benefits are established by Ohio Revised Code Chapter 3307.

The DB plan offers an annual retirement allowance based on final average salary multiplied by a percentage that varies based on years of service. Effective August 1, 2015, the calculation is 2.2 percent of final average salary for the five highest years of earnings multiplied by all years of service. In April 2017, the Retirement Board made the decision to reduce COLA granted on or after July 1, 2017, to 0 percent to preserve the fiscal integrity of the retirement system. Benefit recipients' base benefit and past cost-of-living increases are not affected by this change. Effective Aug. 1, 2017 through July 1, 2019, any member could retire with reduced benefits who had (1) five years of service credit and age 60; (2) 27 years of service credit and age 55; or (3) 30 years of service credit regardless of age. Effective Aug. 1, 2019–July 1, 2021, any member may retire with reduced benefits who has (1) five years of service credit and age 60; (2) 28 years of service credit and age 55; or (3) 30 years of service credit regardless of age.



**Madeira City School District**  
**Notes to the Basic Financial Statements**  
**For The Fiscal Year Ended June 30, 2020**

---

Eligibility changes will be phased in until August 1, 2026, when retirement eligibility for unreduced benefits will be five years of service credit and age 65, or 35 years of service credit and at least age 60.

Eligibility changes for DB Plan members who retire with actuarially reduced benefits will be phased in until August 1, 2023, when retirement eligibility will be five years of qualifying service credit and age 60, or 30 years of service credit at any age.

The DC Plan allows members to place all their member contributions and 9.53 percent of the 14 percent employer contributions into an investment account. The member determines how to allocate the member and employer money among various investment choices offered by STRS. The remaining 4.47 percent of the 14 percent employer rate is allocated to the defined benefit unfunded liability. A member is eligible to receive a retirement benefit at age 50 and termination of employment. The member may elect to receive a lifetime monthly annuity or a lump sum withdrawal.

The Combined Plan offers features of both the DB Plan and the DC Plan. In the Combined Plan, 12 percent of the 14 percent member rate is deposited into the member's DC account and the remaining 2 percent is applied to the DB Plan. Member contributions to the DC Plan are allocated among investment choices by the member, and contributions to the DB Plan from the employer and the member are used to fund the defined benefit payment at a reduced level from the regular DB Plan. The defined benefit portion of the Combined Plan payment is payable to a member on or after age 60 with five years of service. The defined contribution portion of the account may be taken as a lump sum payment or converted to a lifetime monthly annuity at age fifty and after termination of employment.

New members who choose the DC plan or Combined Plan will have another opportunity to reselect a permanent plan during their fifth year of membership. Members may remain in the same plan or transfer to another STRS plan. The optional annuitization of a member's defined contribution account or the defined contribution portion of a member's Combined Plan account to a lifetime benefit results in STRS bearing the risk of investment gain or loss on the account. STRS has therefore included all three plan options as one defined benefit plan for GASB 68 reporting purposes.

A DB or Combined Plan member with five or more years of credited service who is determined to be disabled may qualify for a disability benefit. New members must have at least ten years of qualifying service credit that apply for disability benefits. Members in the DC Plan who become disabled are entitled only to their account balance. Eligible survivors of members who die before service retirement may qualify for monthly benefits. If a member of the DC Plan dies before retirement benefits begin, the member's designated beneficiary is entitled to receive the member's account balance.

**Funding Policy**

Employer and member contribution rates are established by the State Teachers Retirement Board and limited by Chapter 3307 of the Ohio Revised Code. The fiscal year 2020 employer and employee contribution rate of 14 percent was equal to the statutory maximum rates. For fiscal year 2020, the full employer contribution was allocated to pension.

The contractually required contribution to STRS was \$1,466,016 for fiscal year 2020. Of this amount \$254,912 is reported as accrued wages and benefits.

**Madeira City School District**  
**Notes to the Basic Financial Statements**  
**For The Fiscal Year Ended June 30, 2020**

**Net Pension Liabilities, Pension Expense, and Deferred Outflows of Resources and Deferred Inflows of Resources Related to Pensions**

The net pension liability was measured as of June 30, 2019, and the total pension liability used to calculate the net pension liability was determined by an actuarial valuation as of that date. The employer's proportion of the net pension liability was based on the employer's share of contributions to the pension plan relative to the contributions of all participating entities. Following is information related to the proportionate share and pension expense:

	<u>SERS</u>	<u>STRS</u>	<u>Total</u>
Proportionate Share of the Net Pension Liability	\$4,695,781	\$18,775,085	\$23,470,866
Proportion of the Net Pension Liability:			
Current Measurement Date	0.07848310%	0.08489982%	
Prior Measurement Date	<u>0.07710370%</u>	<u>0.08475580%</u>	
Change in Proportionate Share	0.00137940%	0.00014402%	
Pension Expense	\$758,235	\$2,752,056	\$3,510,291

At June 30 2020, reported deferred outflows of resources and deferred inflows of resources related to pensions from the following sources:

	<u>SERS</u>	<u>STRS</u>	<u>Total</u>
<u>Deferred Outflows of Resources</u>			
Differences between expected and actual experience	\$119,075	\$152,860	\$271,935
Changes of assumptions	0	2,205,496	2,205,496
Changes in employer proportionate share of net pension liability	60,846	271,075	331,921
Contributions subsequent to the measurement date	<u>393,849</u>	<u>1,466,016</u>	<u>1,859,865</u>
Total Deferred Outflows of Resources	<u>\$573,770</u>	<u>\$4,095,447</u>	<u>\$4,669,217</u>
<u>Deferred Inflows of Resources</u>			
Differences between expected and actual experience	\$0	\$81,274	\$81,274
Net difference between projected and actual earnings on pension plan investments	60,276	917,624	977,900
Changes in employer proportionate share of net pension liability	<u>49,096</u>	<u>30,475</u>	<u>79,571</u>
Total Deferred Inflows of Resources	<u>\$109,372</u>	<u>\$1,029,373</u>	<u>\$1,138,745</u>

\$1,859,865 reported as deferred outflows of resources related to pension resulting from contributions subsequent to the measurement date will be recognized as a reduction of the net pension liability in the year ending June 30, 2021. Other amounts reported as deferred outflows of resources and deferred inflows of resources related to pension will be recognized in pension expense as follows:

**Madeira City School District**  
**Notes to the Basic Financial Statements**  
**For The Fiscal Year Ended June 30, 2020**

---

Fiscal Year Ending June 30:	SERS	STRS	Total
2021	\$129,598	\$1,327,542	\$1,457,140
2022	(89,222)	246,415	157,193
2023	(4,011)	(90,674)	(94,685)
2024	34,184	116,775	150,959
Total	<u>\$70,549</u>	<u>\$1,600,058</u>	<u>\$1,670,607</u>

**Actuarial Assumptions - SERS**

SERS' total pension liability was determined by their actuaries in accordance with GASB Statement No. 67, as part of their annual actuarial valuation for each defined benefit retirement plan. Actuarial valuations of an ongoing plan involve estimates of the value of reported amounts (e.g., salaries, credited service) and assumptions about the probability of occurrence of events far into the future (e.g., mortality, disabilities, retirements, employment termination). Actuarially determined amounts are subject to continual review and potential modifications, as actual results are compared with past expectations and new estimates are made about the future.

Projections of benefits for financial reporting purposes are based on the substantive plan (the plan as understood by the employers and plan members) and include the types of benefits provided at the time of each valuation and the historical pattern of sharing benefit costs between the employers and plan members to that point. The projection of benefits for financial reporting purposes does not explicitly incorporate the potential effects of legal or contractual funding limitations.

Actuarial calculations reflect a long-term perspective. For a newly hired employee, actuarial calculations will take into account the employee's entire career with the employer and also take into consideration the benefits, if any, paid to the employee after termination of employment until the death of the employee and any applicable contingent annuitant. In many cases actuarial calculations reflect several decades of service with the employer and the payment of benefits after termination.

Key methods and assumptions used in calculating the total pension liability in the latest actuarial valuation, prepared as of June 30, 2019, are presented below:

Inflation	3.00%
Future Salary Increases, including inflation	3.50% - 18.20%
COLA or Ad Hoc COLA	2.50%
Investment Rate of Return	7.50% net of investments expense, including inflation
Actuarial Cost Method	Entry Age Normal (Level Percent of Payroll)

Mortality rates were based on the RP-2014 Blue Collar Mortality Table with fully generational projection and a five year age set-back for both males and females. Mortality among service retired members, and beneficiaries were based upon the RP-2014 Blue Collar Mortality Table with fully generational projection with Scale BB, 120 percent of male rates, and 110 percent of female rates. Mortality among disabled members were based upon the RP-2000 Disabled Mortality Table, 90 percent for male rates and 100 percent for female rates, set back five years is used for the period after disability retirement. The most recent experience study was completed for the five year period ended June 30, 2015.

**Madeira City School District**  
**Notes to the Basic Financial Statements**  
**For The Fiscal Year Ended June 30, 2020**

---

The long-term return expectation for the Pension Plan Investments has been determined by using a building-block approach and assumes a time horizon, as defined in SERS' Statement of Investment Policy. A forecasted rate of inflation serves as the baseline for the return expectation. Various real return premiums over the baseline inflation rate have been established for each asset class. The long-term expected nominal rate of return has been determined by calculating an arithmetic weighted average of the expected real return premiums for each asset class, adding the projected inflation rate, and adding the expected return from rebalanced uncorrelated asset classes.

Asset Class	Target Allocation	Long-Term Expected Real Rate of Return
Cash	1.00%	0.50%
US Equity	22.50%	4.75%
International Equity	22.50%	7.00%
Fixed Income	19.00%	1.50%
Private Equity	10.00%	8.00%
Real Assets	15.00%	5.00%
Multi-Asset Strategies	10.00%	3.00%
Total	100.00%	

**Discount Rate**

The total pension liability was calculated using the discount rate of 7.50 percent. The projection of cash flows used to determine the discount rate assumed the contributions from employers and from the members would be computed based on contribution requirements as stipulated by State statute. Projected inflows from investment earning were calculated using the long-term assumed investment rate of return (7.50 percent). Based on those assumptions, the plan's fiduciary net position was projected to be available to make all future benefit payments of current plan members. Therefore, the long-term expected rate of return on pension plan investments was applied to all periods of projected benefits to determine the total pension liability.

**Sensitivity of the Proportionate Share of the Net Pension Liability to Changes in the Discount Rate**

Net pension liability is sensitive to changes in the discount rate, and to illustrate the potential impact the following table presents the net pension liability calculated using the discount rate of 7.50 percent, as well as what each plan's net pension liability would be if it were calculated using a discount rate that is one percentage point lower (6.50 percent), or one percentage point higher (8.50 percent) than the current rate.

	1% Decrease 6.50%	Current Discount Rate 7.50%	1% Increase 8.50%
Proportionate share of the net pension liability	\$6,580,469	\$4,695,781	\$3,115,235

**Actuarial Assumptions - STRS**

Key methods and assumptions used in the latest actuarial valuation, reflecting experience study results used in the July 1, 2019, actuarial valuation, are presented below:

**Madeira City School District**  
**Notes to the Basic Financial Statements**  
**For The Fiscal Year Ended June 30, 2020**

---

Inflation	2.50%
Projected salary increases	12.50% at age 20 to 2.50% at age 65
Investment Rate of Return	7.45%, net of investment expenses, including inflation
Discount Rate of Return	7.45%
Payroll Increases	3.00%
Cost-of-Living Adjustments (COLA)	0%

Post-retirement mortality rates for healthy retirees are based on the RP-2014 Annuitant Mortality Table with 50 percent of rates through age 69, 70 percent of rates between ages 70 and 79, 90 percent of rates between ages 80 and 84, and 100 percent of rates thereafter, projected forward generationally using mortality improvement scale MP-2016. Pre-retirement mortality rates are based on RP-2014 Employee Mortality Table, projected forward generationally using mortality improvement scale MP-2016. Post-retirement disabled mortality rates are based on the RP-2014 Disabled Mortality Table with 90 percent of rates for males and 100 percent of rates for females, projected forward generationally using mortality improvement scale MP-2016.

Actuarial assumptions used in the July 1, 2019, valuation are based on the results of an actuarial experience study for the period July 1, 2011 through June 30, 2016.

STRS' investment consultant develops an estimate range for the investment return assumption based on the target allocation adopted by the Retirement Board. The target allocation and long-term expected rate of return for each major asset class are summarized as follows:

Asset Class	Target Allocation*	Long-Term Expected Rate of Return **
Domestic Equity	28.00%	7.35%
International Equity	23.00%	7.55%
Alternatives	17.00%	7.09%
Fixed Income	21.00%	3.00%
Real Estate	10.00%	6.00%
Liquidity Reserves	1.00%	2.25%
Total	100.00%	

\* Target weights will be phased in over a 24-month period concluding on July 1, 2019.

\*\*10 Year annualized geometric nominal returns, which include the real rate of return and inflation of 2.25% and does not include investment expenses. Over a 30-year period, STRS' investment consultant indicates that the above target allocations should generate a return above the actuarial rate of return, without net value added by management.

**Discount Rate**

The discount rate used to measure the total pension liability was 7.45 percent as of June 30, 2019. The projection of cash flows used to determine the discount rate assumes that member and employer contributions will be made at the statutory contribution rates in accordance with rate increases described above. For this purpose, only employer contributions that are intended to fund benefits of current plan members and their beneficiaries are included. Based on those assumptions, STRS' fiduciary net position was projected to be available to make all projected future benefit payments to current plan

**Madeira City School District**  
**Notes to the Basic Financial Statements**  
**For The Fiscal Year Ended June 30, 2020**

---

members as of June 30, 2019. Therefore, the long-term expected rate of return on pension plan investments of 7.45 percent was applied to all periods of projected benefit payment to determine the total pension liability as of June 30, 2019.

**Sensitivity of the Proportionate Share of the Net Pension Liability to Changes in the Discount Rate**

The following table presents the proportionate share of the net pension liability calculated using the current period discount rate assumption of 7.45 percent, as well as what the proportionate share of the net pension liability would be if it were calculated using a discount rate that is one-percentage-point lower (6.45 percent) or one-percentage-point higher (8.45 percent) than the current rate:

	1% Decrease 6.45%	Current Discount Rate 7.45%	1% Increase 8.45%
Proportionate share of the net pension liability	\$27,437,695	\$18,775,085	\$11,441,742

**Note 10 - Defined Benefit OPEB Plans**

---

See Note 9 for a description of the net OPEB liability (asset).

**Plan Description - School Employees Retirement System (SERS)**

**Health Care Plan Description**

The employer contributes to the SERS Health Care Fund, administered by SERS for non-certificated retirees and their beneficiaries. For GASB 75 purposes, this plan is considered a cost-sharing other postemployment benefit (OPEB) plan. SERS' Health Care Plan provides healthcare benefits to eligible individuals receiving retirement, disability, and survivor benefits, and to their eligible dependents. Members who retire after June 1, 1986, need 10 years of service credit, exclusive of most types of purchased credit, to qualify to participate in SERS' health care coverage. In addition to age and service retirees, disability benefit recipients and beneficiaries who are receiving monthly benefits due to the death of a member or retiree, are eligible for SERS' health care coverage. Most retirees and dependents choosing SERS' health care coverage are over the age of 65 and therefore enrolled in a fully insured Medicare Advantage plan; however, SERS maintains a traditional, self-insured preferred provider organization for its non-Medicare retiree population. For both groups, SERS offers a self-insured prescription drug program. Health care is a benefit that is permitted, not mandated, by statute. The financial report of the Plan is included in the SERS Comprehensive Annual Financial Report which can be obtained on SERS' website at [www.ohsers.org](http://www.ohsers.org) under Employers/Audit Resources.

Access to health care for retirees and beneficiaries is permitted in accordance with Section 3309 of the Ohio Revised Code. The Health Care Fund was established and is administered in accordance with Internal Revenue Code Section 105(e). SERS' Retirement Board reserves the right to change or discontinue any health plan or program. Active employee members do not contribute to the Health Care Plan. The SERS Retirement Board established the rules for the premiums paid by the retirees for health care coverage for themselves and their dependents or for their surviving beneficiaries. Premiums vary depending on the plan selected, qualified years of service, Medicare eligibility, and retirement status.

**Funding Policy**

State statute permits SERS to fund the health care benefits through employer contributions. Each year, after the allocation for statutorily required pensions and benefits, the Retirement Board may allocate the remainder of the employer contribution of 14 percent of covered payroll to the Health Care Fund in accordance with the funding policy. For fiscal year 2020, no allocation was made to health care. An

**Madeira City School District**  
**Notes to the Basic Financial Statements**  
**For The Fiscal Year Ended June 30, 2020**

---

additional health care surcharge on employers is collected for employees earning less than an actuarially determined minimum compensation amount, pro-rated if less than a full year of service credit was earned. For fiscal year 2020, this amount was \$19,600. Statutes provide that no employer shall pay a health care surcharge greater than 2 percent of that employer’s SERS-covered payroll; nor may SERS collect in aggregate more than 1.5 percent of the total statewide SERS-covered payroll for the health care surcharge. For fiscal year 2020, the employer’s surcharge obligation was \$53,156.

The surcharge, added to any allocated portion of the 14 percent employer contribution rate is the total amount assigned to the Health Care Fund. The contractually required contribution to SERS was \$53,156 for fiscal year 2020. Of this amount \$52,031 is reported as accrued wages and benefits.

**Plan Description - State Teachers Retirement System (STRS)**

**Plan Description**

The State Teachers Retirement System of Ohio (STRS) administers a cost-sharing Health Plan administered for eligible retirees who participated in the defined benefit or combined pension plans offered by STRS. Ohio law authorizes STRS to offer this plan. Benefits include hospitalization, physicians’ fees, prescription drugs and partial reimbursement of monthly Medicare Part B premiums. Medicare Part B premium reimbursements will be discontinued effective January 1, 2021. The Plan is included in the report of STRS which can be obtained by visiting [www.strsoh.org](http://www.strsoh.org) or by calling (888) 227-7877.

**Funding Policy**

Ohio Revised Code Chapter 3307 authorizes STRS to offer the Plan and gives the Retirement Board discretionary authority over how much, if any, of the health care costs will be absorbed by STRS. Active employee members do not contribute to the Health Care Plan. All benefit recipients pay a portion of the health care costs in the form of a monthly premium. Under Ohio law, funding for post-employment health care may be deducted from employer contributions, currently 14 percent of covered payroll. For fiscal year ended June 30, 2020, STRS did not allocate any employer contributions to post-employment health care.

**Net OPEB Liabilities (Assets), OPEB Expense (Income), and Deferred Outflows of Resources and Deferred Inflows of Resources Related to OPEB**

The net OPEB liability (asset) was measured as of June 30, 2019, and the total OPEB liability used to calculate the net OPEB liability (asset) was determined by an actuarial valuation as of that date. The employer’s proportion of the net OPEB liability (asset) was based on the employer’s share of contributions to the respective retirement systems relative to the contributions of all participating entities. Following is information related to the proportionate share:

	<u>SERS</u>	<u>STRS</u>	<u>Total</u>
Proportionate Share of the Net OPEB Liability	\$2,015,994	\$0	\$2,015,994
Proportionate Share of the Net OPEB (Asset)	0	1,406,144	1,406,144
Proportion of the Net OPEB Liability/Asset:			
Current Measurement Date	0.08016550%	0.08489982%	
Prior Measurement Date	<u>0.07786440%</u>	<u>0.08475580%</u>	
Change in Proportionate Share	0.00230110%	0.00014402%	
OPEB Expense	\$46,579	(\$428,600)	(\$382,021)

**Madeira City School District**  
**Notes to the Basic Financial Statements**  
**For The Fiscal Year Ended June 30, 2020**

At June 30 2020, reported deferred outflows of resources and deferred inflows of resources related to OPEB from the following sources:

	SERS	STRS	Total
<u>Deferred Outflows of Resources</u>			
Differences between expected and actual experience	\$29,593	\$127,478	\$157,071
Changes of assumptions	147,245	29,557	176,802
Net difference between projected and actual earnings on OPEB plan investments	4,839	0	4,839
Changes in employer proportionate share of net OPEB liability	71,538	28,525	100,063
Contributions subsequent to the measurement date	53,156	0	53,156
<b>Total Deferred Outflows of Resources</b>	<b>\$306,371</b>	<b>\$185,560</b>	<b>\$491,931</b>
<u>Deferred Inflows of Resources</u>			
Differences between expected and actual experience	\$442,900	\$71,540	\$514,440
Changes of assumptions	112,970	1,541,674	1,654,644
Net difference between projected and actual earnings on OPEB plan investments	0	88,315	88,315
Changes in employer proportionate share of net OPEB liability	20,927	7,935	28,862
<b>Total Deferred Inflows of Resources</b>	<b>\$576,797</b>	<b>\$1,709,464</b>	<b>\$2,286,261</b>

\$53,156 reported as deferred outflows of resources related to OPEB resulting from contributions subsequent to the measurement date will be recognized as a reduction of the net OPEB liability (adjustment to net OPEB asset) in the year ending June 30, 2021. Other amounts reported as deferred outflows of resources and deferred inflows of resources related to OPEB will be recognized in OPEB expense as follows:

Fiscal Year			
Ending June 30:	SERS	STRS	Total
2021	(\$123,045)	(\$333,752)	(\$456,797)
2022	(45,901)	(333,752)	(379,653)
2023	(44,481)	(298,356)	(342,837)
2024	(44,711)	(285,940)	(330,651)
2025	(44,631)	(276,285)	(320,916)
Thereafter	(20,813)	4,181	(16,632)
<b>Total</b>	<b>(\$323,582)</b>	<b>(\$1,523,904)</b>	<b>(\$1,847,486)</b>

**Actuarial Assumptions - SERS**

The total OPEB liability is determined by SERS' actuaries in accordance with GASB Statement No. 74, as part of their annual actuarial valuation for each retirement plan. Actuarial valuations of an ongoing plan involve estimates of the value of reported amounts (e.g., salaries, credited service) and assumptions about the probability of occurrence of events far into the future (e.g., mortality, disabilities, retirements, employment terminations). Actuarially determined amounts are subject to continual review and potential modifications, as actual results are compared with past expectations and new estimates are made about the future.



**Madeira City School District**  
**Notes to the Basic Financial Statements**  
**For The Fiscal Year Ended June 30, 2020**

---

Projections of benefits for financial reporting purposes are based on the substantive plan (the plan as understood by the employers and plan members) and include the types of benefits provided at the time of each valuation and the historical pattern of sharing benefit costs between the employers and plan members to that point. The projection of benefits for financial reporting purposes does not explicitly incorporate the potential effects of legal or contractual funding limitations.

Actuarial calculations reflect a long-term perspective. For a newly hired employee, actuarial calculations will take into account the employee's entire career with the employer and also take into consideration the benefits, if any, paid to the employee after termination of employment until the death of the employee and any applicable contingent annuitant. In many cases, actuarial calculations reflect several decades of service with the employer and the payment of benefits after termination.

Key methods and assumptions used in calculating the total OPEB liability in the latest actuarial valuation date of June 30, 2019, are presented below:

Inflation	3.00%
Future Salary Increases, including inflation	3.50% to 18.20%
Investment Rate of Return	7.50% net of investment expense, including inflation
Municipal Bond Index Rate:	
Measurement Date	3.13%
Prior Measurement Date	3.62%
Single Equivalent Interest Rate, net of plan investment expense, including price inflation:	
Measurement Date	3.22%
Prior Measurement Date	3.70%
Medical Trend Assumption:	
Medicare	5.25% to 4.75%
Pre-Medicare	7.00% to 4.75%

Mortality rates among active members were based on the RP-2014 Blue Collar Mortality Table with fully generational projection and Scale BB, 120 percent of male rates and 110 percent of female rates. RP-2000 Disabled Mortality Table with 90 percent for male rates and 100 percent for female rates set back five years. The most recent experience study was completed for the five year period ended June 30, 2015.

The long-term expected rate of return on plan assets is reviewed as part of the actuarial five-year experience study. The most recent study covers fiscal years 2010 through 2015, and was adopted by the Board on April 21, 2016. Several factors are considered in evaluating the long-term rate of return assumption including long-term historical data, estimates inherent in current market data, and a log-normal distribution analysis in which best-estimate ranges of expected future real rates of return were developed by the investment consultant for each major asset class. These ranges were combined to produce the long-term expected rate of return, 7.50 percent, by weighting the expected future real rates of return by the target asset allocation percentage and then adding expected inflation. The capital market assumptions developed by the investment consultant are intended for use over a 10-year horizon and may not be useful in setting the long-term rate of return for funding pension plans which covers a longer timeframe. The assumption is intended to be a long-term assumption and is not expected to change absent a significant change in the asset allocation, a change in the inflation assumption, or a fundamental change in the market that alters expected returns in future years.

**Madeira City School District**  
**Notes to the Basic Financial Statements**  
**For The Fiscal Year Ended June 30, 2020**

---

The target asset allocation and best estimates of arithmetic real rates of return for each major asset class, as used in the June 30, 2015 five-year experience study, are summarized as follows:

<u>Asset Class</u>	Target Allocation	Long-Term Expected Real Rate of Return
Cash	1.00%	0.50%
US Equity	22.50%	4.75%
International Equity	22.50%	7.00%
Fixed Income	19.00%	1.50%
Private Equity	10.00%	8.00%
Real Assets	15.00%	5.00%
Multi-Asset Strategies	<u>10.00%</u>	3.00%
Total	<u><u>100.00%</u></u>	

**Discount Rate**

The discount rate used to measure the total OPEB liability at June 30, 2019 was 3.22 percent. The discount rate used to measure total OPEB liability prior to June 30, 2019, was 3.70 percent. The projection of cash flows used to determine the discount rate assumed that contributions will be made from members and the System at the state statute contribution rate of 2.00 percent of projected covered employee payroll each year, which includes a 1.50 percent payroll surcharge and 0.50 percent of contributions from the basic benefits plan. Based on these assumptions, the OPEB plan's fiduciary net position was projected to become insufficient to make future benefit payments during the fiscal year ending June 30, 2025. Therefore, the long-term expected rate of return on OPEB plan assets was used to present value the projected benefit payments through the fiscal year ending June 30, 2024 and the Fidelity General Obligation 20-year Municipal Bond Index rate of 3.13 percent, as of June 30, 2019 (i.e. municipal bond rate), was used to present value the projected benefit payments for the remaining years in the projection. The total present value of projected benefit payments from all years was then used to determine the single rate of return that was used as the discount rate. The projection of future benefit payments for all current plan members was until the benefit payments ran out.

**Sensitivity of the Proportionate Share of the Net OPEB Liability to Changes in the Discount Rate and Changes in the Health Care Cost Trend Rates**

The net OPEB liability is sensitive to changes in the discount rate and the health care cost trend rate. The following table presents the net OPEB liability of SERS, what SERS' net OPEB liability would be if it were calculated using a discount rate that is 1 percentage point lower (2.22%) and higher (4.22%) than the current discount rate (3.22%). Also shown is what SERS' net OPEB liability would be based on health care cost trend rates that are 1 percentage point lower (6.00% decreasing to 3.75%) and higher (8.00% decreasing to 5.75%) than the current rate.

*This Space Intentionally Left Blank*

**Madeira City School District**  
**Notes to the Basic Financial Statements**  
**For The Fiscal Year Ended June 30, 2020**

	1% Decrease (2.22%)	Current Discount Rate (3.22%)	1% Increase (4.22%)
Proportionate share of the net OPEB liability	\$2,447,034	\$2,015,994	\$1,673,266
	1% Decrease (6.00% decreasing to 3.75%)	Current Trend Rate (7.00% decreasing to 4.75%)	1% Increase (8.00% decreasing to 5.75%)
Proportionate share of the net OPEB liability	\$1,615,219	\$2,015,994	\$2,547,724

**Assumption and Benefit Changes since the Prior Measurement Date**

Amounts reported for the fiscal year incorporate changes in key methods and assumptions used in calculating the total OPEB liability as presented below:

(1) Discount Rate:

Prior Measurement Date	3.70%
Measurement Date	3.22%

(2) Municipal Bond Index Rate:

Prior Measurement Date	3.62%
Measurement Date	3.13%

(3) Single Equivalent Interest Rate, net of plan investment expense, including price inflation:

Prior Measurement Date	3.70%
Measurement Date	3.22%

**Actuarial Assumptions - STRS**

Key methods and assumptions used in the latest actuarial valuation, reflecting experience study results used in the June 30, 2019, actuarial valuation are presented below:

Inflation	2.50%
Projected salary increases	12.50% at age 20 to 2.50% at age 65
Investment Rate of Return	7.45%, net of investment expenses, including inflation
Payroll Increases	3.00%
Discount Rate of Return	7.45%
Health Care Cost Trends:	
Medical	
Pre-Medicare	5.87% initial, 4% ultimate
Medicare	4.93% initial, 4% ultimate
Prescription Drug	
Pre-Medicare	7.73% initial, 4% ultimate
Medicare	9.62% initial, 4% ultimate

Projections of benefits include the historical pattern of sharing benefit costs between the employers and retired plan members.

**Madeira City School District**  
**Notes to the Basic Financial Statements**  
**For The Fiscal Year Ended June 30, 2020**

---

For healthy retirees the mortality rates are based on the RP-2014 Annuitant Mortality Table with 50 percent of rates through age 69, 70 percent of rates between ages 70 and 79, 90 percent of rates between ages 80 and 84, and 100 percent of rates thereafter, projected forward generationally using mortality improvement scale MP-2016. For disabled retirees, mortality rates are based on the RP-2014 Disabled Mortality Table with 90 percent of rates for males and 100 percent of rates for females, projected forward generationally using mortality improvement scale MP-2016.

Actuarial assumptions used in the June 30, 2019, valuation are based on the results of an actuarial experience study for the period July 1, 2011 through June 30, 2016.

STRS' investment consultant develops an estimate range for the investment return assumption based on the target allocation adopted by the Retirement Board. The target allocation and long-term expected rate of return for each major asset class are summarized as follows:

Asset Class	Target Allocation*	Long-Term Expected Rate of Return**
Domestic Equity	28.00%	7.35%
International Equity	23.00%	7.55%
Alternatives	17.00%	7.09%
Fixed Income	21.00%	3.00%
Real Estate	10.00%	6.00%
Liquidity Reserves	1.00%	2.25%
Total	100.00%	

\* Target weights will be phased in over a 24-month period concluding on July 1, 2019.

\*\*10 Year annualized geometric nominal returns, which include the real rate of return and inflation of 2.25% and does not include investment expenses. Over a 30-year period, STRS' investment consultant indicates that the above target allocations should generate a return above the actuarial rate of return, without net value added by management.

**Discount Rate**

The discount rate used to measure the total OPEB liability was 7.45 percent as of June 30, 2019 and June 30, 2018. The projection of cash flows used to determine the discount rate assumed STRS continues to allocate no employer contributions to the health care fund. Based on these assumptions, the OPEB plan's fiduciary net position was projected to be available to make all projected future benefit payments to current plan members as of June 30, 2019. Therefore, the long-term expected rate of return on health care plan investments of 7.45 percent was used to measure the total OPEB liability as of June 30, 2019 and June 30, 2018.

**Sensitivity of the Proportionate Share of the Net OPEB (Asset) to Changes in the Discount and Health Care Cost Trend Rate**

The following table represents the net OPEB asset as of June 30, 2019, calculated using the current period discount rate assumption of 7.45 percent, as well as what the net OPEB asset would be if it were calculated using a discount rate that is one percentage point lower (6.45 percent) or one percentage point higher (8.45 percent) than the current assumption. Also shown is the net OPEB asset as if it were calculated using health care cost trend rates that are one percentage point lower or one percentage point higher than the current health care cost trend rates.

**Madeira City School District**  
**Notes to the Basic Financial Statements**  
**For The Fiscal Year Ended June 30, 2020**

---

	1% Decrease (6.45%)	Current Discount Rate (7.45%)	1% Increase (8.45%)
Proportionate share of the net OPEB (asset)	(\$1,199,865)	(\$1,406,144)	(\$1,579,578)

	1% Decrease	Current Trend Rate	1% Increase
Proportionate share of the net OPEB (asset)	(\$1,594,504)	(\$1,406,144)	(\$1,175,451)

**Assumption and Benefit Changes since the Prior Measurement Date**

There was no change to the claims costs process. Claim curves were trended to the fiscal year ending June 30, 2020 to reflect the current price renewals. The non-Medicare subsidy percentage was increased effective January 1, 2020 from 1.944 percent to 1.984 percent per year of service. The non-Medicare frozen subsidy base premium was increased effective January 1, 2020. The Medicare subsidy percentages were adjusted effective January 1, 2021 to 2.1 percent for the Medicare plan. The Medicare Part B monthly reimbursement elimination date was postponed to January 1, 2021.

There were changes in assumptions, which increased the total OPEB liability by approximately \$0.04 billion. The assumption changes included changes in healthcare costs and trends.

**Note 11 - Contingent Liabilities**

---

**School Foundation**

District foundation funding is based on the annualized full-time equivalent (FTE) enrollment of each student. The Ohio Department of Education (ODE) is legislatively required to adjust/reconcile funding as enrollment information is updated by schools throughout the State, which can extend past the fiscal year end. As of the date of this report, additional ODE adjustments for fiscal year 2020 are not finalized. As a result, the impact of future FTE adjustments on the fiscal year 2020 financial statements is not determinable, at this time. Management believes this may result in either an additional receivable to, or a liability of, the District.

**Grants**

The District received financial assistance from federal and State agencies in the form of grants. The expenditure of funds received under these programs generally requires compliance with terms and conditions specified in the grant agreements and is subject to audit by the grantor agencies. Any disallowed claims resulting from such audits could become a liability of the General Fund or other applicable funds. However, the effect of any such disallowed claims on the overall financial position of the School District at June 30, 2020, if applicable, cannot be determined at this time.

**Litigation**

The District's attorney estimates that all other potential claims against the District not covered by insurance resulting from all other litigation would not materially affect the financial statements of the District.

**Madeira City School District**  
**Notes to the Basic Financial Statements**  
**For The Fiscal Year Ended June 30, 2020**

---

**Note 12 - Jointly Governed Organizations**

---

*Unified Purchasing Cooperative of Ohio River Valley* - The Unified Purchasing Cooperative of Ohio River Valley is a jointly governed organization among a two county consortium of school districts. The Unified Purchasing Cooperative was organized under the Hamilton Clermont Cooperative Association to benefit member districts with a more economically sound purchasing mechanism for general school, office, and cafeteria supplies. The Unified Purchasing Cooperative organization is governed by representatives from each of the governments that create the organization, but there is no ongoing financial interest or responsibility by the participating governments.

*Great Oaks Career Campuses* - The Great Oaks Career Campuses is a distinct political subdivision of the State of Ohio operated under the direction of a Board consisting of one representative each of the participating school districts' elected board. The Institute possesses its own budgeting and taxing authority. To obtain financial information write to the Great Oaks Career Campuses, Treasurer, at 3254 East Kemper Road, Cincinnati, Ohio 45241.

*Hamilton/Clermont Cooperative* – The District is a participant in the Hamilton/Clermont Cooperative (HCC) which is a computer consortium. HCC is an association of 24 public school districts within the boundaries of Hamilton and Clermont Counties. The organization was formed for the purpose of applying modern technology with the aid of computers and other electronic equipment to administrative and instructional functions among member school districts. The governing board of HCC consists of the superintendents and/or treasurers of the participating members. HCC is not accumulating significant financial resources nor is it experiencing fiscal stress that may cause an additional financial benefit to or burden on members in the future. Financial information can be obtained from the HCC, Director, at 1007 Cottonwood Drive, Loveland, Ohio 45140.

*Greater Cincinnati Insurance Consortium* – The District is a member of the Greater Cincinnati Insurance Consortium (GCIC) which is a group insurance consortium. The consortium has 14 member schools and provides a wide range of group insurance benefits to each member schools employees and dependents and designated beneficiaries. The purpose of the consortium is to establish and maintain a fund to provide and/or purchase health insurance, dental insurance, life insurance and other insurance benefits to employees, their dependents and designated beneficiaries. The consortium is governed by a Board of Directors made up from one representative of each school district/service center.

*Southwestern Ohio Educational Purchasing Council (SOEPC)* - SOEPC is a purchasing council made up of 230 school districts and boards of developmental disabilities in 18 counties. The purpose of the cooperative is to obtain prices for quality merchandise and services commonly used by schools. All member districts are obligated to pay all fees, charges, or other assessments as established by the SOEPC. Each member district has one voting representative. Title to any and all equipment and supplies purchased by the SOEPC is held in trust for the member district by the fiscal agent. Payments to SOEPC are made from the general fund. To obtain financial information, write to the Southwestern Ohio Educational Purchasing Council, 303 Corporate Center Drive, Suite 208, Vandalia, Ohio 45377.

**Note 13 - Risk Management**

---

The District is exposed to various risks of loss related to torts, theft of, damage to, and destruction of assets, errors and omissions, injuries to employees and natural disasters. During fiscal year 2019, the District contracted with Liberty Mutual for property, commercial general liability insurance, auto, umbrella, computer, and mechanical insurance.

**Madeira City School District**  
**Notes to the Basic Financial Statements**  
**For The Fiscal Year Ended June 30, 2020**

---

General liability is provided by Liberty Mutual with \$1,000,000 each occurrence \$2,000,000 aggregate limit. Commercial Umbrella Liability Insurance is provided by Liberty Mutual with \$5,000,000 each occurrence and \$5,000,000 aggregate limit. Vehicles are covered by Liberty Mutual with a \$1,000,000 liability limit. Workers Compensation and Employers' Liability is covered by Liberty Mutual with \$1,000,000 each accident and \$1,000,000 policy limit. The Treasurer is covered by a bond in the amount of \$50,000. The Superintendent and Board President are covered by bonds in the amount of \$20,000 each. The District has elected to provide employee medical, dental and life insurance through Greater Cincinnati Insurance Consortium. The employees share the cost of the monthly premium for the coverage with the Board.

For fiscal year 2020, the District participated in the Ohio School Comp Workers' Compensation Group Rating Program (GRP), an insurance purchasing pool. The intent of the GRP is to achieve the benefit of a reduced premium for the District by virtue of its grouping and representation with other participants in the GRP. The workers' compensation experience of the participating school districts is calculated as one experience and a common premium rate is applied to all school districts in the GRP. Each participant pays its workers' compensation premium to the State based on the rate for the GRP rather than its individual rate. This "equity pooling" arrangement insures that each participant shares equally in the overall performance of the GRP. Participation in the GRP is limited to school districts that can meet the GRP's selection criteria. The firm of Liberty Mutual Insurance & Co. provides administrative, cost control and actuarial services to the GRP.

There were no significant reductions in insurance coverage from the prior year. Also, there were no settlements that exceeded insurance coverage for the past three fiscal years.

**Note 14 - Insurance Purchasing Pool**

---

*Liberty Mutual Insurance Company* - The School District participates in the Ohio School Workers' Compensation Group Rating Program (GRP), an insurance purchasing pool. The GRP's business and affairs are conducted by a three member Board of directors consisting of the Superintendent, President, and Treasurer. Each year, the participating school districts pay an enrollment fee to the GRP to cover the costs of administering the program.

**Note 15 - Accountability**

---

The following individual fund had a deficit in fund balance at year end:

Fund	Deficit
Special Revenue:	
School Reading Incentive Award	\$1,809
Special Education IDEA B	36,027
Assistive Technology Grant	208

The deficit in fund balance was primarily due to accruals in GAAP. The general fund is liable for any deficit in these funds and will provide operating transfers when cash is required not when accruals occur.

**Madeira City School District**  
**Notes to the Basic Financial Statements**  
**For The Fiscal Year Ended June 30, 2020**

---

**Note 16 - Fund Balance Reserves For Set-Asides**

---

The District is required by State statute to annually set aside in the general fund an amount based on a statutory formula for the acquisition and construction of capital improvements. Amounts not spent by year-end or offset by similarly restricted resources received during the year must be held in cash at year-end and carried forward to be used for the same purposes in future years.

The following cash basis information describes the change in the year-end set-aside amounts for capital acquisition. Disclosure of this information is required by State statute.

	<u>Capital Acquisition</u>
Set Aside Reserve Balance as of June 30, 2019	\$0
Current Year Set Aside Requirements	271,312
Qualified Disbursements	<u>(276,090)</u>
Set Aside Reserve Balance as of June 30, 2020	<u><u>(\$4,778)</u></u>
Restricted Cash as of June 30, 2020	<u><u>\$0</u></u>

Although the District had offsets and qualifying disbursements during the year that reduced the set-aside amounts for capital maintenance reserve to below zero, these extra amounts may not be used to reduce the set-aside requirements of future years. Qualifying disbursements for capital maintenance reserve during the year were \$276,090, which exceeded the required set-aside and reserve balance.

**Note 17 - Interfund Transactions**

---

Interfund transactions at June 30, 2020, consisted of the following transfers in and transfers out:

	Transfers	
	<u>In</u>	<u>Out</u>
General Fund	\$0	\$3,350,000
Permanent Improvement Fund	<u>3,350,000</u>	<u>0</u>
Total All Funds	<u><u>\$3,350,000</u></u>	<u><u>\$3,350,000</u></u>

Interfund balance/transfers are used to move revenues from the fund that statute or budget requires to collect them to the fund that statute or budget requires to expend them and unrestricted revenues collected in the general fund to finance various programs accounted for in other funds in accordance with budget authorizations; to segregate and to return money to the fund from which it was originally provided once a project is completed.

**Note 18 - Fund Balances**

---

Fund balance is classified as nonspendable, restricted, committed, assigned and/or unassigned based primarily on the extent to which the District is bound to observe constraints imposed upon the use of the resources in the government funds. The constraints placed on fund balance for the major governmental funds and all other governmental funds are presented below:



**Madeira City School District**  
**Notes to the Basic Financial Statements**  
**For The Fiscal Year Ended June 30, 2020**

<u>Fund Balances</u>	<u>General</u>	<u>Debt Service</u>	<u>Permanent Improvement</u>	<u>Other Governmental Funds</u>	<u>Total</u>
<b>Nonspendable:</b>					
Prepays	\$24,241	\$0	\$0	\$1,007	\$25,248
<b>Total Nonspendable</b>	<b>24,241</b>	<b>0</b>	<b>0</b>	<b>1,007</b>	<b>25,248</b>
<b>Restricted for:</b>					
Other Local Grants	\$0	\$0	\$0	\$82,228	\$82,228
Auxiliary Services	0	0	0	1,027	1,027
Consumer Economics	0	0	0	53,560	53,560
Title I	0	0	0	1,314	1,314
Student Wellness and Success	0	0	0	143	143
Debt Service	0	2,719,331	0	0	2,719,331
Education Foundation Funding	0	0	0	37,636	37,636
<b>Total Restricted</b>	<b>0</b>	<b>2,719,331</b>	<b>0</b>	<b>175,908</b>	<b>2,895,239</b>
<b>Assigned to:</b>					
Public School Support	30,562	0	0	0	30,562
Encumbrances	158,078	0	0	0	158,078
Budgetary	387,825	0	0	0	387,825
Permanent Improvement	0	0	5,775,582	0	5,775,582
<b>Total Assigned</b>	<b>576,465</b>	<b>0</b>	<b>5,775,582</b>	<b>0</b>	<b>6,352,047</b>
<b>Unassigned (Deficit)</b>	<b>11,953,540</b>	<b>0</b>	<b>0</b>	<b>(38,752)</b>	<b>11,914,788</b>
<b>Total Fund Balance</b>	<b>\$12,554,246</b>	<b>\$2,719,331</b>	<b>\$5,775,582</b>	<b>\$138,163</b>	<b>\$21,187,322</b>

**Note 19 - Tax Abatements**

As of June 30, 2020, the District has taxes abated on its behalf by the City of Madeira for a TIF agreement.

<u>Tax Abatement Programs</u>	<u>District's Share of Taxes Abated</u>
TIF	
Kenwood Senior Star	\$271,144
Traditions of Madeira	126,875

The abatements will be terminated if the property is deemed delinquent, behind on payments, or the terms and conditions of the TIF are not adhered to and no recapture provisions noted.

**Note 20 – Implementation of New Accounting Principles**

For fiscal year 2020, the District has postponed implementation of Governmental Accounting Standards Board (GASB) Statement No. 84, Fiduciary Activities, GASB No. 88, Certain Disclosures Related to Debt, including Direct Borrowings and Direct Placements, and GASB No. 90, Majority Equity Interests – An Amendment of GASB Statements No. 14 and No. 61. The District did not implement these statements due to the GASB postponing the implementation by 12 months because of the Covid-19 pandemic.

**Madeira City School District**  
**Notes to the Basic Financial Statements**  
**For The Fiscal Year Ended June 30, 2020**

---

**Note 21 – COVID-19**

---

The United States and the State of Ohio declared a state of emergency in March 2020 due to the COVID-19 pandemic. The financial impact of COVID-19 and the ensuing emergency measures will impact subsequent periods of the District. The District's investment portfolio could incur a significant decline in fair value, in 2020, consistent with the general decline in financial markets. However, because the values of individual investments fluctuate with market conditions, and due to market volatility, the amount of losses that will be recognized in subsequent periods, if any, cannot be determined. In addition, the impact on the District's future operating costs, revenues, the impact of the investments of the pension and other employee benefit plan in which the District participates and any recovery from emergency funding, either federal or state, cannot be estimated.

# **REQUIRED SUPPLEMENTARY INFORMATION**

---

Madeira City School District  
 Required Supplementary Information  
 Schedule of the District's Proportionate Share of the Net Pension Liability  
 School Employees Retirement System of Ohio  
 Last Seven Fiscal Years (1) (2)

Year	District's Proportion of the Net Pension Liability	District's Proportionate Share of the Net Pension Liability	District's Covered Payroll	District's Proportionate Share of the Net Pension Liability as a Percentage of its Covered Payroll	Plan Fiduciary Net Position Percentage as a of the Total Pension Liability
2020	0.07848310%	\$4,695,781	\$2,686,896	174.77%	70.85%
2019	0.07710370%	4,415,872	2,510,178	175.92%	71.36%
2018	0.07570570%	4,523,248	2,317,643	195.17%	69.50%
2017	0.07966940%	5,831,065	1,912,114	304.95%	62.98%
2016	0.07747540%	4,420,821	2,341,912	188.77%	69.16%
2015	0.07221000%	3,654,507	2,075,786	176.05%	71.70%
2014	0.07221000%	4,289,329	2,510,116	170.88%	65.52%

(1) The schedule is intended to show information for the past 10 years and the additional years' information will be displayed as it becomes available. Information prior to 2014 is not available.

(2) Amounts presented as of the District's measurement date which is the prior fiscal year end.

See accompanying notes to the required supplementary information.

Madeira City School District  
 Required Supplementary Information  
 Schedule of District's Contributions for Net Pension Liability  
 School Employees Retirement System of Ohio  
 Last Ten Fiscal Years

Year	District's Contractually Required Contribution	District's Contributions in Relation to the Contractually Required Contributions	District's Contribution Deficiency (Excess)	District's Covered Payroll	District's Contributions as a Percentage of Covered Payroll
2020	\$393,849	(\$393,849)	\$0	\$2,813,207	14.00%
2019	362,731	(362,731)	0	2,686,896	13.50%
2018	338,874	(338,874)	0	2,510,178	13.50%
2017	324,470	(324,470)	0	2,317,643	14.00%
2016	267,696	(267,696)	0	1,912,114	14.00%
2015	308,664	(308,664)	0	2,341,912	13.18%
2014	287,704	(287,704)	0	2,075,786	13.86%
2013	347,400	(347,400)	0	2,510,116	13.84%
2012	332,136	(332,136)	0	2,469,413	13.45%
2011	318,960	(318,960)	0	2,537,470	12.57%

See accompanying notes to the required supplementary information.

Madeira City School District  
 Required Supplementary Information  
 Schedule of the District's Proportionate Share of the Net Pension Liability  
 State Teachers Retirement System of Ohio  
 Last Seven Fiscal Years (1) (2)

Year	District's Proportion of the Net Pension Liability	District's Proportionate Share of the Net Pension Liability	District's Covered Payroll	District's Proportionate Share of the Net Pension Liability as a Percentage of its Covered Payroll	Plan Fiduciary Net Position Percentage as a of the Total Pension Liability
2020	0.08489982%	\$18,775,085	\$10,146,514	185.04%	77.40%
2019	0.08475580%	18,635,897	9,794,400	190.27%	77.30%
2018	0.08382317%	19,912,374	10,046,014	198.21%	75.30%
2017	0.08408283%	28,145,058	9,090,000	309.63%	66.80%
2016	0.08152803%	22,531,963	8,559,943	263.23%	72.10%
2015	0.08278181%	20,135,401	9,035,815	222.84%	74.70%
2014	0.08278181%	23,911,099	9,397,662	254.44%	69.30%

(1) The schedule is intended to show information for the past 10 years and the additional years' information will be displayed as it becomes available. Information prior to 2014 is not available.

(2) Amounts presented as of the District's measurement date which is the prior fiscal year end.

See accompanying notes to the required supplementary information.

Madeira City School District  
 Required Supplementary Information  
 Schedule of District's Contributions for Net Pension Liability  
 State Teachers Retirement System of Ohio  
 Last Ten Fiscal Years

Year	District's Contractually Required Contribution	District's Contributions in Relation to the Contractually Required Contributions	District's Contribution Deficiency (Excess)	District's Covered Payroll	District's Contributions as a Percentage of Covered Payroll
2020	\$1,466,016	(\$1,466,016)	\$0	\$10,471,543	14.00%
2019	1,420,512	(1,420,512)	0	10,146,514	14.00%
2018	1,371,216	(1,371,216)	0	9,794,400	14.00%
2017	1,406,442	(1,406,442)	0	10,046,014	14.00%
2016	1,272,600	(1,272,600)	0	9,090,000	14.00%
2015	1,198,392	(1,198,392)	0	8,559,943	14.00%
2014	1,174,656	(1,174,656)	0	9,035,815	13.00%
2013	1,221,696	(1,221,696)	0	9,397,662	13.00%
2012	1,170,024	(1,170,024)	0	9,000,185	13.00%
2011	1,172,880	(1,172,880)	0	9,022,154	13.00%
2010	1,169,376	(1,169,376)	0	8,995,200	13.00%

See accompanying notes to the required supplementary information.

Madeira City School District  
 Required Supplementary Information  
 Schedule of the District's Proportionate Share of the Net OPEB Liability  
 School Employees Retirement System of Ohio  
 Last Four Fiscal Years (1) (2)

Year	District's Proportion of the Net OPEB Liability	District's Proportionate Share of the Net OPEB Liability	District's Covered Payroll	District's Proportionate Share of the Net OPEB Liability as a Percentage of its Covered Payroll	Plan Fiduciary Net Position Percentage as a of the Total OPEB Liability
2020	0.08016550%	\$2,015,994	\$2,686,896	75.03%	15.57%
2019	0.07786440%	2,160,169	2,510,178	86.06%	13.57%
2018	0.07719820%	2,071,797	2,317,643	89.39%	12.46%
2017	0.08083039%	2,303,965	1,912,114	120.49%	11.49%

(1) The schedule is intended to show information for the past 10 years and the additional years' information will be displayed as it becomes available. Information prior to 2017 is not available.

(2) Amounts presented as of the District's measurement date which is the prior fiscal year end.

See accompanying notes to the required supplementary information.



Madeira City School District  
 Required Supplementary Information  
 Schedule of District's Contributions for Net OPEB Liability  
 School Employees Retirement System of Ohio  
 Last Five Fiscal Years (1) (2)

Year	District's Contractually Required Contribution (2)	District's Contributions in Relation to the Contractually Required Contributions	District's Contribution Deficiency (Excess)	District's Covered Payroll	District's Contributions as a Percentage of Covered Payroll
2020	\$53,156	(\$53,156)	\$0	\$2,813,207	1.89%
2019	61,127	(61,127)	0	2,686,896	2.28%
2018	53,030	(53,030)	0	2,510,178	2.11%
2017	25,500	(25,500)	0	2,317,643	1.10%
2016	41,356	(41,356)	0	1,912,114	2.16%

(1) The schedule is intended to show information for the past 10 years and the additional years' information will be displayed as it becomes available. Information prior to 2016 is not available.

(2) Includes surcharge.

See accompanying notes to the required supplementary information.

Madeira City School District  
 Required Supplementary Information  
 Schedule of the District's Proportionate Share of the Net OPEB (Asset)/Liability  
 State Teachers Retirement System of Ohio  
 Last Four Fiscal Years (1) (2)

Year	District's Proportion of the Net OPEB (Asset)/Liability	District's Proportionate Share of the Net OPEB (Asset)/Liability	District's Covered Payroll	District's Proportionate Share of the Net OPEB (Asset)/Liability as a Percentage of its Covered Payroll	Plan Fiduciary Net Position Percentage as a of the Total OPEB (Asset)/Liability
2020	0.08489982%	(\$1,406,144)	\$10,146,514	(13.86%)	174.74%
2019	0.08475580%	(1,361,939)	9,794,400	(13.91%)	176.00%
2018	0.08382317%	3,270,471	10,046,014	32.55%	47.10%
2017	0.08408283%	4,496,772	9,090,000	49.47%	37.30%

(1) The schedule is intended to show information for the past 10 years and the additional years' information will be displayed as it becomes available. Information prior to 2017 is not available.

(2) Amounts presented as of the District's measurement date which is the prior fiscal year end.

See accompanying notes to the required supplementary information.

Madeira City School District  
 Required Supplementary Information  
 Schedule of District's Contributions for Net OPEB (Asset)/Liability  
 State Teachers Retirement System of Ohio  
 Last Five Fiscal Years (1)

Year	District's Contractually Required Contribution	District's Contributions in Relation to the Contractually Required Contributions	District's Contribution Deficiency (Excess)	District's Covered Payroll	District's Contributions as a Percentage of Covered Payroll
2020	\$0	\$0	\$0	\$10,471,543	0.00%
2019	0	0	0	10,146,514	0.00%
2018	0	0	0	9,794,400	0.00%
2017	0	0	0	10,046,014	0.00%
2016	0	0	0	9,090,000	0.00%

(1) The schedule is intended to show information for the past 10 years and the additional years' information will be displayed as it becomes available. Information prior to 2016 is not available.

See accompanying notes to the required supplementary information.

Madeira City School District  
Schedule of Revenues, Expenditures and Changes in Fund Balance  
Budget and Actual (Non-GAAP Budgetary Basis)  
For the Fiscal Year Ended June 30, 2020

	General Fund			
	Original Budget	Final Budget	Actual	Variance from Final Budget
<b>Revenues:</b>				
Taxes	\$16,641,737	\$16,571,623	\$16,670,389	\$98,766
Revenue in lieu of taxes	387,996	386,361	388,664	2,303
Tuition and Fees	173,062	172,333	173,360	1,027
Investment Earnings	85,843	85,482	85,991	509
Intergovernmental	4,540,050	4,520,923	4,547,867	26,944
Extracurricular Activities	67,634	67,349	67,750	401
Charges for Services	9,207	9,168	9,223	55
Other Revenues	10,732	10,686	10,750	64
<b>Total Revenues</b>	<b>21,916,261</b>	<b>21,823,925</b>	<b>21,953,994</b>	<b>130,069</b>
<b>Expenditures:</b>				
<b>Current:</b>				
<b>Instruction:</b>				
Regular	8,960,497	9,858,469	9,740,608	117,861
Special	2,458,519	2,704,899	2,672,561	32,338
Other	300,667	330,798	326,843	3,955
<b>Support Services:</b>				
Pupil	1,481,986	1,630,502	1,611,009	19,493
Instructional Staff	499,348	549,390	542,822	6,568
General Administration	54,037	59,452	58,741	711
School Administration	1,424,557	1,567,319	1,548,581	18,738
Fiscal	658,043	723,988	715,333	8,655
Business	73,774	81,167	80,197	970
Operations and Maintenance	1,316,497	1,448,429	1,431,113	17,316
Pupil Transportation	946,674	1,041,545	1,029,093	12,452
Central	13,135	14,452	14,279	173
Operation of Non-Instructional Services	3,727	4,101	4,052	49
Extracurricular Activities	399,170	439,172	433,922	5,250
Capital Outlay	15,148	16,666	16,467	199
<b>Total Expenditures</b>	<b>18,605,779</b>	<b>20,470,349</b>	<b>20,225,621</b>	<b>244,728</b>
<b>Excess of Revenues Over (Under) Expenditures</b>	<b>3,310,482</b>	<b>1,353,576</b>	<b>1,728,373</b>	<b>374,797</b>
<b>Other Financing Sources (Uses):</b>				
Advances In	10,250	10,207	10,268	61
Transfers (Out)	(3,081,703)	(3,390,535)	(3,350,000)	40,535
<b>Total Other Financing Sources (Uses)</b>	<b>(3,071,453)</b>	<b>(3,380,328)</b>	<b>(3,339,732)</b>	<b>40,596</b>
<b>Net Change in Fund Balance</b>	<b>239,029</b>	<b>(2,026,752)</b>	<b>(1,611,359)</b>	<b>415,393</b>
<b>Fund Balance - Beginning of Year (includes prior year encumbrances appropriated)</b>	<b>13,403,001</b>	<b>13,403,001</b>	<b>13,403,001</b>	<b>0</b>
<b>Fund Balance - End of Year</b>	<b>\$13,642,030</b>	<b>\$11,376,249</b>	<b>\$11,791,642</b>	<b>\$415,393</b>

See accompanying notes to the required supplementary information.

**Madeira City School District**  
**Notes to the Required Supplementary Information**  
**For The Fiscal Year Ended June 30, 2020**

---

**Note 1 – Budgetary Process**

---

All funds, except agency funds, are legally required to be budgeted and appropriated. The major documents prepared are the tax budget, the appropriations resolution and the certificate of estimated resources which are prepared on the budgetary basis of accounting. The tax budget demonstrates a need for existing or increased tax rates. The certificate of estimated resources establishes a limit on the amount that the Board of Education may appropriate. The appropriation resolution is Board's authorization to spend resources and sets annual limits on expenditures plus encumbrances at the level of control selected by Board. The legal level of control has been established by Board at the fund level. Any budgetary modifications at this level may only be made by resolution of the Board of Education.

The certificate of estimated resources may be amended during the year if projected increases or decreases in revenue are identified by the School District Treasurer. The amounts reported as the original budgeted amounts on the budgetary statements reflect the amounts on the certificate of estimated resources when the original appropriations were adopted. The amounts reported as the final budgeted amounts on the budgetary statements reflect the amounts on the final amended certificate of estimated resources issued during the fiscal year 2020.

The appropriation resolution is subject to amendment by the Board throughout the year with the restriction that appropriations cannot exceed estimated resources. The amounts reported as the original budgeted amounts reflect the first appropriation resolution for that fund that covered the entire year, including amounts automatically carried forward from prior years. The amounts reported as the final budgeted amounts represent the final appropriation amounts passed by Board during the year.

While the District is reporting financial position, results of operations and changes in fund balance on the basis of generally accepted accounting principles (GAAP), the budgetary basis as provided by law is based upon accounting for certain transactions on a basis of cash receipts, disbursements and encumbrances. The Combined Schedule of Revenues, Expenditures and Changes in Fund Balances – Budget and Actual (Non-GAAP Basis) presented on the budgetary basis to provide a meaningful comparison of actual results with the budget. The major differences between the budget basis and GAAP basis are as follows:

1. Revenues are recorded when received in cash (budget basis) as opposed to when susceptible to accrual (GAAP basis).
2. Expenditures are recorded when paid in cash (budget basis) as opposed to when the liability is incurred (GAAP basis).
3. Encumbrances are treated as expenditures for all funds (budget basis) rather than as an assignment of fund balance for governmental fund types and expendable trust funds (GAAP basis).
4. Some funds are reported as part of the general fund (GAAP basis) as opposed to the general fund being reported alone (budget basis).

The following table summarizes the adjustments necessary to reconcile the GAAP basis statements to the budgetary basis statements for the General Fund.

**Madeira City School District**  
**Notes to the Required Supplementary Information**  
**For The Fiscal Year Ended June 30, 2020**

---

Net Change in Fund Balance

	<u>General</u>
GAAP Basis	(\$6,214,787)
Revenue Accruals	3,754,310
Expenditure Accruals	1,245,442
Issuance of Debt	(235,519)
Advances In	10,268
Encumbrances	(171,072)
Funds Budgeted Elsewhere	<u>(1)</u>
Budget Basis	<u><u>(\$1,611,359)</u></u>

**Note 2 - Net Pension Liability**

---

**School Employees Retirement System (SERS)**

**Changes in Benefit Terms:**

2020: There were no changes in benefit terms from the amounts reported for this fiscal year.

2019: With the authority granted the Board under Senate Bill 8, the Board has enacted a three year COLA delay for future benefit recipients commencing benefits on or after April 1, 2018.

2018: SERS changed from a fixed 3% annual increase to a Cost of Living Adjustment (COLA) based on the change in the Consumer Price Index Index (CPI-W), with a cap of 2.5% and a floor of 0%.

2014-2017: There were no changes in benefit terms from the amounts reported for these fiscal years.

**Changes in Assumptions:**

2018-2020: There were no changes in methods and assumptions used in the calculation of actuarial determined contributions for these fiscal years.

2017: The following changes of assumptions affected the total pension liability since the prior measurement date:

- (1) The assumed rate of inflation was reduced from 3.25% to 3.00%,
- (2) Payroll growth assumption was reduced from 4.00% to 3.50%,
- (3) Assumed real wage growth was reduced from 0.75% to 0.50%,
- (4) Rates of withdrawal, retirement and disability were updated to reflect recent experience,
- (5) Mortality among active members was updated to RP-2014 Blue Collar Mortality Table with fully generational projection and a five year age set-back for both males and females,
- (6) Mortality among service retired members, and beneficiaries was updated to the following RP-2014 Blue Collar Mortality Table with fully generational projection with Scale BB, 120% of male rates, and 110% of female rates,
- (7) Mortality among disabled members was updated to RP-2000 Disabled Mortality Table, 90% for male rates and 100% for female rates, set back five years is used for the period after disability retirement, and
- (8) The discount rate was reduced from 7.75% to 7.50%.

2014-2016: There were no changes in methods and assumptions used in the calculation of actuarial determined contributions for these fiscal years.

**Madeira City School District**  
**Notes to the Required Supplementary Information**  
**For The Fiscal Year Ended June 30, 2020**

---

**State Teachers Retirement System (STRS)**

**Changes in Benefit Terms:**

2019-2020: There were no changes in benefit terms from the amounts reported for these fiscal years.

2018: STRS decreased the Cost of Living Adjustment (COLA) to zero.

2014-2017: There were no changes in benefit terms from the amounts reported for these fiscal years.

**Changes in Assumptions:**

2019-2020: There were no changes in methods and assumptions used in the calculation of actuarial determined contributions for these fiscal years.

2018: The following changes of assumptions affected the total pension liability since the prior measurement date:

- (1) The long term expected rate of return was reduced from 7.75% to 7.45%,
- (2) The inflation assumption was lowered from 2.75% to 2.50%,
- (3) The payroll growth assumption was lowered to 3.00%,
- (4) Total salary increases rate was lowered by decreasing the merit component of the individual salary increases, in addition to a decrease of 0.25% due to lower inflation,
- (5) The healthy and disabled mortality assumptions were updated to the RP-2014 mortality tables with generational improvement scale MP-2016, and
- (6) Rates of retirement, termination and disability were modified to better reflect anticipated future experience.

2014-2017: There were no changes in methods and assumptions used in the calculation of actuarial determined contributions for these fiscal years.

**Note 3 - Net OPEB (Asset)/Liability**

---

**School Employees Retirement System (SERS)**

**Changes in Benefit Terms:**

2017-2020: There were no changes in benefit terms from the amounts reported for these fiscal years.

**Changes in Assumptions:**

2020: Amounts reported for the fiscal year incorporate changes in key methods and assumptions used in calculating the total OPEB liability as presented below:

- (1) Discount Rate:

Prior Measurement Date	3.70%
Measurement Date	3.22%
- (2) Municipal Bond Index Rate:

Prior Measurement Date	3.62%
Measurement Date	3.13%
- (3) Single Equivalent Interest Rate, net of plan investment expense, including price inflation:

Prior Measurement Date	3.70%
Measurement Date	3.22%

2019: Amounts reported for the fiscal year incorporate changes in key methods and assumptions used in calculating the total OPEB liability as presented below:

**Madeira City School District**  
**Notes to the Required Supplementary Information**  
**For The Fiscal Year Ended June 30, 2020**

---

- (4) Discount Rate:
 

Prior Measurement Date	3.63%
Measurement Date	3.70%
- (5) Municipal Bond Index Rate:
 

Prior Measurement Date	3.56%
Measurement Date	3.62%
- (6) Single Equivalent Interest Rate, net of plan investment expense, including price inflation:
 

Prior Measurement Date	3.63%
Measurement Date	3.70%

2018: Amounts reported for the fiscal year incorporate changes in key methods and assumptions used in calculating the total OPEB liability as presented below:

- (1) Discount Rate:
 

Fiscal Year 2018	3.63%
Fiscal Year 2017	2.98%
- (2) Municipal Bond Index Rate:
 

Fiscal Year 2018	3.56%
Fiscal Year 2017	2.92%
- (3) Single Equivalent Interest Rate, net of plan investment expense, including price inflation:
 

Fiscal Year 2018	3.63%
Fiscal Year 2017	2.98%

2017: The following changes of assumptions affected the total OPEB liability since the prior measurement date:

- (1) The assumed rate of inflation was reduced from 3.25% to 3.00%,
- (2) Payroll growth assumption was reduced from 4.00% to 3.50%,
- (3) Assumed real wage growth was reduced from 0.75% to 0.50%,
- (4) Rates of withdrawal, retirement and disability were updated to reflect recent experience,
- (5) Mortality among active members was updated to RP-2014 Blue Collar Mortality Table with fully generational projection and a five year age set-back for both males and females,
- (6) Mortality among service retired members, and beneficiaries was updated to the following RP-2014 Blue Collar Mortality Table with fully generational projection with Scale BB, 120% of male rates, and 110% of female rates, and
- (7) Mortality among disabled members was updated to RP-2000 Disabled Mortality Table, 90% for male rates and 100% for female rates, set back five years is used for the period after disability retirement.

**State Teachers Retirement System (STRS)**

**Changes in Benefit Terms:**

2020: There was no change to the claims costs process. Claim curves were trended to the fiscal year ending June 30, 2020 to reflect the current price renewals. The non-Medicare subsidy percentage was increased effective January 1, 2020 from 1.944% to 1.984% per year of service. The non-Medicare frozen subsidy base premium was increased effective January 1, 2020. The Medicare subsidy percentages were adjusted effective January 1, 2021 to 2.1% for the Medicare plan. The Medicare Part B monthly reimbursement elimination date was postponed to January 1, 2021.



**Madeira City School District**  
**Notes to the Required Supplementary Information**  
**For The Fiscal Year Ended June 30, 2020**

---

2019: The subsidy multiplier for non-Medicare benefit recipients was increased from 1.900% to 1.944% per year of service effective January 1, 2019. The non-Medicare frozen subsidy base premium was increased effective January 1, 2019 and all remaining Medicare Part B premium reimbursements will be discontinued beginning January 1, 2020. The Board is extending the current Medicare Part B partial reimbursement program for one year. Under this program, benefit recipients currently enrolled in the STRS Ohio Health Care Program and Medicare Part B receive \$29.90 per month to reimburse a portion of the Medicare Part B premium. The reimbursement was set to be reduced to \$0 beginning January 1, 2020. This impacts about 85,000 benefit recipients.

2018: The subsidy multiplier for non-Medicare benefit recipients was reduced from 2.1 percent to 1.9 percent per year of service. Medicare Part B premium reimbursements were discontinued for certain survivors and beneficiaries and all remaining Medicare Part B premium reimbursements will be discontinued beginning January 1, 2019.

2017: There were no changes in benefit terms from the amounts reported for this fiscal year.

**Changes in Assumptions:**

2020: There were changes in assumptions during the measurement year, which increased the total OPEB liability by approximately \$0.04 billion. The assumption changes included changes in healthcare costs and trends.

2019: The discount rate was increased from the blended rate of 4.13% to the long-term expected rate of return of 7.45% based on the methodology defined under GASB Statement No. 74, Financial Reporting for Postemployment Benefit Plans Other Than Pension Plans (OPEB). Valuation year per capita health care costs were updated.

2018: The discount rate was increased from 3.26 percent to 4.13 percent based on the methodology defined under GASB Statement No. 74, Financial Reporting for Postemployment Benefit Plans Other Than Pension Plans (OPEB) and the long term expected rate of return was reduced from 7.75 percent to 7.45 percent. Valuation year per capita health care costs were updated, and the salary scale was modified. The percentage of future retirees electing each option was updated based on current data and the percentage of future disabled retirees and terminated vested participants electing health coverage were decreased. The assumed mortality, disability, retirement, withdrawal and future health care cost trend rates were modified along with the portion of rebated prescription drug costs.

2017: There were no changes in methods and assumptions used in the calculation of actuarial determined contributions for this fiscal year.

**This page intentionally left blank.**

# OHIO AUDITOR OF STATE KEITH FABER



Corporate Centre of Blue Ash  
11117 Kenwood Road  
Blue Ash, Ohio 45242-1817  
(513) 361-8550 or (800) 368-7419  
SouthwestRegion@ohioauditor.gov

## INDEPENDENT AUDITOR'S REPORT ON INTERNAL CONTROL OVER FINANCIAL REPORTING AND ON COMPLIANCE AND OTHER MATTERS REQUIRED BY *GOVERNMENT AUDITING STANDARDS*

Madeira City School District  
Hamilton County  
7465 Loannes Drive  
Cincinnati, Ohio 45243

To the Board of Education:

We have audited, in accordance with auditing standards generally accepted in the United States and the Comptroller General of the United States' *Government Auditing Standards*, the financial statements of the governmental activities, each major fund, and the aggregate remaining fund information of the Madeira City School District, Hamilton County, (the District) as of and for the year ended June 30, 2020, and the related notes to the financial statements, which collectively comprise the District's basic financial statements and have issued our report thereon dated January 7, 2021. We also noted the financial impact of COVID-19 and the continuing emergency measures which may impact subsequent periods of the District.

### ***Internal Control Over Financial Reporting***

As part of our financial statement audit, we considered the District's internal control over financial reporting (internal control) as a basis for designing audit procedures appropriate in the circumstances to the extent necessary to support our opinion on the financial statements, but not to the extent necessary to opine on the effectiveness of the District's internal control. Accordingly, we have not opined on it.

A *deficiency in internal control* exists when the design or operation of a control does not allow management or employees, when performing their assigned functions, to prevent, or detect and timely correct misstatements. A *material weakness* is a deficiency, or combination of internal control deficiencies resulting in a reasonable possibility that internal control will not prevent or detect and timely correct a material misstatement of the District's financial statements. A *significant deficiency* is a deficiency, or a combination of deficiencies, in internal control that is less severe than a material weakness, yet important enough to merit attention by those charged with governance.

Our consideration of internal control was for the limited purpose described in the first paragraph of this section and was not designed to identify all internal control deficiencies that might be material weaknesses or significant deficiencies. Given these limitations, we did not identify any deficiencies in internal control that we consider material weaknesses. However, unidentified material weaknesses may exist.

### ***Compliance and Other Matters***

As part of reasonably assuring whether the District's financial statements are free of material misstatement, we tested its compliance with certain provisions of laws, regulations, contracts, and grant agreements, noncompliance with which could directly and materially affect the determination of financial statement amounts. However, opining on compliance with those provisions was not an objective of our audit and accordingly, we do not express an opinion. The results of our tests disclosed no instances of noncompliance or other matters we must report under *Government Auditing Standards*.

***Purpose of this Report***

This report only describes the scope of our internal control and compliance testing and our testing results, and does not opine on the effectiveness of the District's internal control or on compliance. This report is an integral part of an audit performed under *Government Auditing Standards* in considering the District's internal control and compliance. Accordingly, this report is not suitable for any other purpose.



Keith Faber  
Auditor of State  
Columbus, Ohio  
January 7, 2021

# OHIO AUDITOR OF STATE KEITH FABER



**MADEIRA CITY SCHOOL DISTRICT**

**HAMILTON COUNTY**

**AUDITOR OF STATE OF OHIO CERTIFICATION**

This is a true and correct copy of the report, which is required to be filed pursuant to Section 117.26, Revised Code, and which is filed in the Office of the Ohio Auditor of State in Columbus, Ohio.



**Certified for Release 1/21/2021**

88 East Broad Street, Columbus, Ohio 43215  
Phone: 614-466-4514 or 800-282-0370

This report is a matter of public record and is available online at  
[www.ohioauditor.gov](http://www.ohioauditor.gov)