



Dave Yost • Auditor of State

CITY OF WYOMING
HAMILTON COUNTY

TABLE OF CONTENTS

TITLE	PAGE
Independent Auditor's Report	Under Separate Cover
Comprehensive Annual Financial Report	Under Separate Cover
Independent Auditor's Report on Internal Control over Financial Reporting and on Compliance and Other Matters Required by <i>Government Auditing Standards</i>	1

This page intentionally left blank.



Dave Yost • Auditor of State

INDEPENDENT AUDITOR'S REPORT ON INTERNAL CONTROL OVER FINANCIAL REPORTING AND ON COMPLIANCE AND OTHER MATTERS REQUIRED BY *GOVERNMENT AUDITING STANDARDS*

City of Wyoming
Hamilton County
800 Oak Avenue
Wyoming, OH 45215

To the City Council:

We have audited, in accordance with auditing standards generally accepted in the United States and the Comptroller General of the United States' *Government Auditing Standards*, the financial statements of the governmental activities, the business-type activities, each major fund, and the aggregate remaining fund information of the City of Wyoming, Hamilton County, (the City) as of and for the year ended December 31, 2017, and the related notes to the financial statements, which collectively comprise the City's basic financial statements and have issued our report thereon dated June 11, 2018.

Internal Control Over Financial Reporting

As part of our financial statement audit, we considered the City's internal control over financial reporting (internal control) to determine the audit procedures appropriate in the circumstances to the extent necessary to support our opinion on the financial statements, but not to the extent necessary to opine on the effectiveness of the City's internal control. Accordingly, we have not opined on it.

A *deficiency in internal control* exists when the design or operation of a control does not allow management or employees, when performing their assigned functions, to prevent, or detect and timely correct misstatements. A *material weakness* is a deficiency, or combination of internal control deficiencies resulting in a reasonable possibility that internal control will not prevent or detect and timely correct a material misstatement of the City's financial statements. A *significant deficiency* is a deficiency, or a combination of deficiencies, in internal control that is less severe than a material weakness, yet important enough to merit attention by those charged with governance.

Our consideration of internal control was for the limited purpose described in the first paragraph of this section and was not designed to identify all internal control deficiencies that might be material weaknesses or significant deficiencies. Given these limitations, we did not identify any deficiencies in internal control that we consider material weaknesses. However, unidentified material weaknesses may exist.

Compliance and Other Matters

As part of reasonably assuring whether the City's financial statements are free of material misstatement, we tested its compliance with certain provisions of laws, regulations, contracts, and grant agreements, noncompliance with which could directly and materially affect the determination of financial statement amounts. However, opining on compliance with those provisions was not an objective of our audit and accordingly, we do not express an opinion. The results of our tests disclosed no instances of noncompliance or other matters we must report under *Government Auditing Standards*.

Purpose of this Report

This report only describes the scope of our internal control and compliance testing and our testing results, and does not opine on the effectiveness of the City's internal control or on compliance. This report is an integral part of an audit performed under *Government Auditing Standards* in considering the City's internal control and compliance. Accordingly, this report is not suitable for any other purpose.

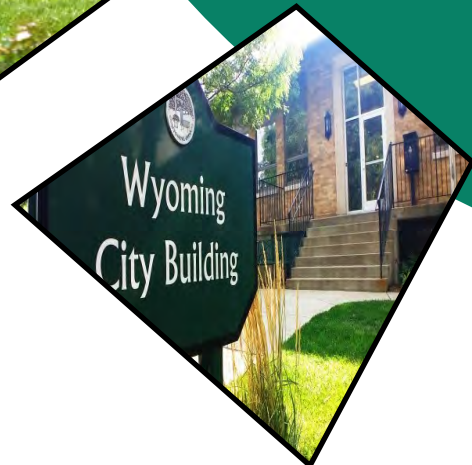
A handwritten signature in black ink that reads "Dave Yost". The signature is written in a cursive, flowing style.

Dave Yost
Auditor of State

Columbus, Ohio

June 11, 2018

Comprehensive
Annual
Financial
Report



For the Fiscal Year Ended December 31, 2017
City of Wyoming, Ohio

This page intentionally left blank.

City Of Wyoming, Ohio

Comprehensive Annual Financial Report

For The Year Ended December 31, 2017

**Prepared By:
Jeremiah Caudill,
Finance Director**

THIS PAGE INTENTIONALLY LEFT BLANK



	Page
INTRODUCTORY SECTION	
Letter of Transmittal	vii
Listing of Principal City Officials	xv
Organizational Chart	xvi
Certificate of Achievement for Excellence in Financial Reporting	xvii
 FINANCIAL SECTION	
Independent Auditor's Report	1
Management's Discussion and Analysis	4
 Basic Financial Statements:	
Government-wide Financial Statements:	
Statement of Net Position	11
Statement of Activities	12
Fund Financial Statements:	
Balance Sheet - Governmental Funds	14
Reconciliation of Total Governmental Fund Balance to Net Position of Governmental Activities	15
Statement of Revenues, Expenditures and Changes in Fund Balance - Governmental Funds	16
Reconciliation of the Statement of Revenues, Expenditures, and Changes in Fund Balance of Governmental Funds to the Statement of Activities	17
Statement of Net Position - Proprietary Fund	18
Statement of Revenues, Expenses and Changes in Fund Net Position - Proprietary Fund	19
Statement of Cash Flows - Proprietary Fund	20
Statement of Fiduciary Net Position - Fiduciary Funds	21
Notes to the Basic Financial Statements	22
 Required Supplementary Information:	
Schedule of the City's Proportionate Share of the Net Pension Liability - OPERS	58
Schedule of the City's Proportionate Share of the Net Pension Liability - OP&F	59
Schedule of City Contributions - OPERS	60
Schedule of City Contributions - OP&F	61
Schedule of Revenues, Expenditures and Changes in Fund Balance - Budget and Actual (Non-GAAP Budgetary Basis) - General Fund	62
Notes to the Required Supplementary Information	64
 Combining Statements and Individual Fund Schedules:	
Major Governmental Funds	67
Schedules of Revenues, Expenditures and Changes in Fund Balance - Budget and Actual (Non-GAAP Budgetary Basis):	
Capital Improvement Fund	68
Equipment Replacement Fund	69

City of Wyoming, Ohio
 Table of Contents
 For the Year Ended December 31, 2017

	<u>Page</u>
Nonmajor Governmental Funds	70
Combining Balance Sheet	71
Combining Statement of Revenues, Expenditures and Changes in Fund Balance	72
Nonmajor Special Revenue Funds:	
Fund Descriptions	73
Combining Balance Sheet	74
Combining Statement of Revenues, Expenditures and Changes in Fund Balance	76
Schedules of Revenues, Expenditures and Changes in Fund Balance - Budget and Actual (Non-GAAP Budgetary Basis):	
Street Construction Fund	78
State Highway Fund	79
Criminal Activity Forfeitures Fund	80
Drug Offenders Fund	81
DUI Enforcement Fund	82
Mayor's Court Computer Fund	83
FEMA Firefighter Grant Fund	84
Law Enforcement Fund	85
Nonmajor Debt Service Funds:	
Fund Descriptions	86
Combining Balance Sheet	87
Combining Statement of Revenues, Expenditures and Changes in Fund Balance	88
Schedules of Revenues, Expenditures and Changes in Fund Balance - Budget and Actual (Non-GAAP Budgetary Basis):	
Public Facility Note Retirement Fund	89
Property Acquisition Note Retirement Fund	90
Other General Funds	
Fund Descriptions	91
Schedule of Revenues, Expenditures and Changes in Fund Balance	
Budget and Actual (Non-GAAP Budgetary Basis):	
Recreation Fund	92
Retirement Reserve Fund	93
Health/Life Insurance Fund	94
Nonmajor Funds:	
Fund Descriptions	95
Agency Funds:	
Statement of Changes in Assets and Liabilities	96

City of Wyoming, Ohio
Table of Contents
For the Year Ended December 31, 2017

	<u>Schedule</u>	<u>Page</u>
STATISTICAL SECTION		
Statistical Section Description Page		97
Net Position by Component	1	99
Changes in Net Position	2	100
Fund Balances, Governmental Funds	3	103
Changes in Fund Balances, Governmental Funds	4	104
Assessed Value and Estimated Actual Value of Taxable Property	5	106
Direct and Overlapping Property Tax Rates	6	107
Principal Property Tax Payers	7	108
Property Tax Levies and Collections	8	109
Income Tax by Payer Type and Income Tax Rate	9	110
Principal Income Taxpayers	10	111
Ratios of Outstanding Debt by Type	11	112
Ratios of General Bonded Debt Outstanding	12	113
Direct and Overlapping Governmental Activities Debt	13	114
Legal Debt Margin Information	14	115
Demographic and Economic Statistics	15	116
Major Employers	16	117
Full-Time Equivalent City Government Employees by Function/Program	17	118
Operating Indicators by Function/Program	18	119
Capital Asset Statistics by Function/Program	19	120

THIS PAGE INTENTIONALLY LEFT BLANK



INTRODUCTORY SECTION



This page intentionally left blank.



CITY OF WYOMING •
800 OAK AVENUE • WYOMING, OHIO 45215 • (513) 821-7600

June 11, 2018

To the Honorable Council and the Citizens of the City of Wyoming, Ohio:

The Comprehensive Annual Financial Report (CAFR) of the City of Wyoming, Ohio, (the City) for the fiscal year ended December 31, 2017 is hereby submitted.

Ohio Law requires that cities file their annual financial reports with the Auditor of State's office. Additionally, the Ohio Administrative Code requires that those reports be prepared pursuant to generally accepted accounting principles. The preparation of this CAFR represents the commitment of Wyoming to adhere to nationally recognized standards of excellence in financial reporting.

We believe this report presents financial and operating information about the City's activities during the year which should be useful to its citizens, taxpayers, and investors. Responsibility for the accuracy of the data and the completeness and fairness of the presentation including all disclosures rests with the City. To the best of our knowledge and belief, the enclosed data is accurate in all material respects and is reported in a manner designed to present fairly the financial position and results of operations of the City. All disclosures necessary to enable the reader to gain an understanding of the City's financial activities have been included.

The Ohio Auditor of State's Office, audited the basic financial statements that are included in this report. They have issued an unmodified ("clean") opinion on the City of Wyoming's financial statements for the year ended December 31, 2017. The independent auditor's report is located at the front of the financial section of this report.

As a part of the City's independent audit, tests are made to determine the adequacy of the internal control structure, as well as to determine that the City has complied with applicable laws and regulations. The results of the City's independent audit for the year ended December 31, 2017 provided no instances of material weaknesses in the internal control structure or significant violations of applicable laws and regulations.

This transmittal letter is designed to provide historical information about the City, as well as complement the required Management's Discussion and Analysis (MD&A). Generally accepted accounting principles require that management provide a narrative introduction, overview, and analysis to accompany the basic financial statements. The City's MD&A, which focuses on the government wide statements, can be found immediately following the Independent Auditor's Report.

REPORTING ENTITY

For financial purposes, the City includes in this report all funds of the government. Two other local government jurisdictions which provide services within the City boundaries, Hamilton County and the Wyoming Board of Education, are separate legal entities which do not meet the reporting entity criteria and therefore are not included in the City's financial report.

The City also participates in the Miami Valley Risk Management Association, Inc. (MVRMA), a risk sharing insurance pool, which provides insurance coverage to the City. The pool consists of twenty municipalities who pool risk for property, crime, liability, machinery, flood, earthquake, and public official liability. This separate entity does not meet the established criteria for inclusion in the reporting entity and, accordingly, is not included in the City's financial report.

CITY OVERVIEW

The City of Wyoming is a suburban community rich in history and civic pride. Located in Southwestern Ohio in the Mill Creek Valley, north of the City of Cincinnati, Wyoming is easily accessible by State Route 4 and by Interstate 75.

The City of Wyoming is a home rule municipal corporation operating under its own charter, initially adopted on June 7, 1949 and last amended on November 8, 2011.

The City has operated under a non-partisan Council/Manager form of government since 1949. Under this system, seven council members, who are the policy-makers, are elected at large in odd-numbered years for two-year terms. The Mayor and Vice Mayor are chosen by Council from among its members. A professional City Manager, appointed by the City Council, supervises the implementation of Council policies. The City Manager appoints all Department Directors of the City.

The City provides a full range of municipal services. These services include public safety (police, fire, and emergency medical services), sanitation, parks, recreation, community enrichment, water and sewer, planning and zoning, construction and maintenance of highways, streets, and infrastructure, income tax collection, mayor's court and general administrative services.

Wyoming City government is organized into various departments to deliver services to the citizens. The following is a brief summary of the departments and the services they provide:

The **Community Development Department** is responsible for ensuring the safe and orderly development of the community through the enforcement of all applicable state and local building and zoning regulations. The Community Development Director/Building Official enforces the provisions of the City Code through annual inspections of all special uses, conducting zoning and plan reviews, and permit issuance and inspections for new construction, modifications, and repairs. The Department consists of a full time Community Development Director/Building Official and an Assistant Community Development Director. The Department relies on the support of other departmental staff members to provide clerical assistance. Outside consultants are utilized as needed to review various technical aspects of building plans.

The Community Development Department researches and recommends proposals for new or improved economic development strategies within the community. Direction for such proposals stems from the Master Plan, the Economic Development Commission, Planning Commission, and City Council. Members of the Economic Development Commission and Planning Commission are Council-appointed Wyoming residents who volunteer hours of their time and professional expertise to assist the City in a direction compatible with the values and priorities that make Wyoming a premier community.

The **Customer Service/Finance Department** is responsible for financial control (including investments and debt management), data processing, risk management, accounts payable, personnel benefits, payroll processing and collection of all City revenue. Such revenue includes the City income tax, property tax, utility billings, state and county funding, recreational program fees, and charges for various public services (e.g. emergency service runs, police security, and water removal). The Department is responsible for preparing, submitting and adhering to the City's operating and capital budget each year as well as developing the Comprehensive Annual Finance Report (CAFR) that depicts the City's financial standing based on the Generally Accepted Accounting Principles (GAAP).

The Customer Service/Finance Department also is responsible for coordinating with outside organizations to provide various services and benefits. The Customer Service/Finance Department acts as a collection agent for the Metropolitan Sewer District with regard to sewer usage in the City. In exchange for billing and collection services, the City retains a 7.0% fee based on total sewer revenue billed. The Customer Service/Finance Department also liaisons with MediCount Management, the organization contracted to collect City revenue from emergency service runs within the City.

The **Fire-EMS Department** is committed to fulfilling the public safety needs of the City. These include providing Advance Life Support emergency medical care and transportation, fire prevention, fire suppression, property protection, CPR training, fire investigation, hazardous material mitigation, rescue services including auto extrication, as well as emergency management for natural and man-made disasters. Fire safety inspections also are performed for all municipal buildings, businesses, pre-schools schools, churches, commercial buildings, apartments/multi-family dwellings and restaurants.

During the year, the Department also provided limited EMS coverage to several other communities.

Wyoming Fire/EMS is a 59 member predominately volunteer department that provides ISO Class 3 fire protection. These members include 35 volunteer firefighters, 20 part time paramedics, 2 fire cadets, 1 Medical Director (paid by contract), and 1 Fire Chief. The cadets are young residents aged 14 to 18 who provide assistance to firefighters with equipment and in support functions. The Wyoming Firefighters Association, a separate non-profit organization, offers support to the department through the annual Turkey Disposal/Raffle and other fundraising events.

The **Police Department** works with citizens, community groups and other stakeholders to improve the quality of life in the City and to make our City safe and secure. The Department achieves this through the enforcement of state and local laws, the protection of life and property, the preservation of law and order, and by sponsoring various safety and public education programs such as the Citizens Police Academy and the Junior Police Camp. The Police Department uses data driven approaches to address crime and traffic safety issues in our community by using technology to evaluate real and potential safety concerns enabling it to allocate resources more effectively. The Department responds to calls for service ranging from crimes in progress to quality of life concerns. In addition, the Department works with community groups, members and other city departments to coordinate community events. The

Department is actively involved in regional law enforcement efforts such as HCPA SWAT, CLEAR Board, and the Hamilton County Emergency Management Agency Executive Board. Engaging in these partnerships enhances the safety and security of our community, which is the Department's top priority.

The Police Department has 20 employees of which 18 are sworn police officers.

The **Public Works Department** currently has 14 full time employees which include a Director, and an Assistant Public Works Director (management responsibility for the Waterworks department). Their duties include street maintenance and resurfacing, maintenance of the City's urban forest, upkeep and repair of City facilities, parks and recreational facilities, planting and maintenance of flower boxes, leaf removal and mulch delivery, fleet and equipment maintenance and snow and ice control. The Public Works Department is responsible for the management of the City's comprehensive solid waste management program including regular garbage collection, curbside recycling, leaf composting, and a yard waste sticker program. In addition, it plays a vital role in the preparation and support of the 4th of July celebration, Fall Festival, Wyoming Fun Run and other community activities.

The **Recreation Department** provides opportunities for leisure and recreational activities for residents of all ages and interests through a diverse offering of programs and services. The Recreation Department employs 4 full time staff members and more than 100 part-time and seasonal employees.

The facilities and parks supported by the Recreation Department include the Recreation Center, Civic Center, Family Aquatic Center, eight tennis courts, gymnasium, skate park, nine parks with soccer fields, six parks with playgrounds, baseball fields, and playground equipment for pre-school to school aged children. Athletic programs and fitness opportunities are provided year round in many areas for families, adults and children. In addition to managing the recreational programs for the City, the Recreation Department also offers a wide variety of community events to the residents throughout the year, including the 4th of July celebration, Fall Festival, Halloween, and Holiday Open House. These events provide a true sense of community for the residents and emphasize the spirit of Wyoming through pride and volunteerism.

The **Water Works Department** pursues its mission to provide the highest quality drinking water utilizing state-of-the-art technology and efficient production methods. The Department employs 3 full-time plant operators, 1 part time plant operator and 2 part time meter readers. The Public Works Director and the Assistant Public Works Director allocate a portion of their time to management of the water plant.

Groundwater is the source of Wyoming's water and is a precious resource. Wyoming's six drinking water wells pump groundwater into the plant for treatment. Maintaining the wells is critical.

ECONOMIC CONDITIONS AND OUTLOOK

Primarily a residential community with a population of 8,428 living in 2.8 square miles, the City of Wyoming relies heavily upon income tax and property tax revenues for its economic well being. Combined, these tax revenues accounted for 90% of total General Fund revenues in 2017. Income tax receipts were down \$111,873 (or 1.8%) in 2017 compared to 2016. This decrease was anticipated and budgeted in 2017. Property values in the City of Wyoming remained stable in 2017 compared to 2016. In 2017, Hamilton County Auditor's office completed a 3 year revaluation of property values. This revaluation resulted in a 2% increase in property values that went into effect in 2018. Prudent planning and controlled spending have enabled the City of Wyoming to continue to provide a high level of public service. As the City continues to react and adapt to the economic climate, City Administration will search for innovative ways to streamline processes and reduce expenditures.

The City continues to maintain its AAA rating from Standard and Poor's. The City's rating was reaffirmed in March 2017. The prestigious AAA bond rating is the highest investment grade rating attainable. Factors contributing to the positive rating include the attractiveness of the community as an established high-end suburb with excellent schools and proximity to the Cincinnati labor market, strong income and wealth levels, a solid financial position characterized by strong reserve levels, and financial management practices that are well-embedded and likely sustainable. The City of Wyoming is 1 of only 8 municipalities in Ohio to receive this rating.

City Administration, while optimistic of the current economy, will continue to monitor revenue streams very closely and will be prepared to make adjustments in expenditures as needed.

MAJOR INITIATIVES

Several special projects in 2017 are noteworthy as they represented significant time commitments on the part of the Administration and either resulted in or will result in various improvements to services and/or facilities. The continuation of a number of ongoing programs/projects is designed to maintain the high quality of services that Wyoming residents have come to expect.

Public Works Department

In 2017, the City continued its street improvement plan. The planning of the reconstruction of Springfield Pike continued with zero percent interest loans from the Ohio Public Works Commission. The City replaced 3,340 lineal feet of curb on Stout Avenue and Barney Avenue. Public Works also repaired/replaced 51 storm water catch basins. Last, the City installed the second phase of the Hike/Bike Trail from North Park to Oak Park.

The Public Works department spent numerous man hours to replace/rebuild/repair several storm water catch basins, replace/repair/paint several fire hydrants. They also spent many man hours grinding damaged sections of asphalt and repaving them, filling pot holes, applying asphalt sealant patches and street cracks, street painting and street sweeping. They also planted more than 100 trees throughout the community and continue to earn the "Tree City USA" designation.

Recreation Department

Continuing expansion and upgrades to recreation facilities in 2017 brought residents many new options for enjoying leisure time in the community.

Renovations to recreation facilities included the completion of the Civic Center remodeling, with a new lobby and numerous upgrades to the main floor. The new Summer Camp facilities in the lower level of the Recreation Center were also completed. The Recreation Center upgrades were finalized, with a new fitness center, lobby, and locker rooms on the main floor.

Water Works Department

In 2017, Wyoming Water works continued concentrating on asset maintenance rather than capital improvements. Water safety was again a priority. Wyoming Water works cleaned and rehabilitated well No. 9. The Department also cleaned sludge lagoon No. 2. In addition, 95 aging water meters were installed or replaced with state of the art, digital meters. Last the Water Department repaired 20 water main breaks in 2017.

Community Development Department

Construction documents for 263 Zoning Certificates, Building Permits, Public Area Excavation Permits, and Special Use Permits authorizing approximately \$7,862,856 in work were reviewed and approved in 2017. Of these permits, 4 were for construction of new homes. The Sidewalk Replacement Program oversaw repairs to damaged or hazardous sidewalks at more than 214 blocks of sidewalk.

Several new businesses opened in 2017. Wyoming Community Coffee, at 434 Springfield Pike, opened a family-friendly coffee shop. Homewatchers at 3 Wyoming Ave opened a home care provider that specializes in elder care.

In 2017, the update of the Master Plan was initiated and included extensive research to collect feedback from residents about what they want to see in their community over the next 10 years. Through surveys and community forums, residents let their wishes be know, and a formal plan was drawn.

The Fire/EMS Department

In 2017, Wyoming is protected by a high quality Fire & EMS Department at a low cost per resident, which is due in large part to the number of dedicated volunteers who sign on every year to help with fire and emergency medical services. With 20 part-time paramedics and 35 volunteer firefighters, Wyoming saves over \$2.5 million each year versus the cost of a comparable career department. The volunteers and the Wyoming Firefighters Association, the nonprofit group that supports the Fire & EMS Department, make possible a wide range of services that go beyond basic protection to help residents prevent emergencies before they happen.

Wyoming was one of only about 60 EMS departments in Ohio to be recognized by the American Heart Association for its excellence in treating cardiac and stroke emergencies, out of more than 600 total departments and one of only 627 across the entire country. The award recognizes excellence in pre-hospital treatment that includes measures for time to first arrival on scene, 12-lead electrocardiogram

monitoring, and percentage of patients delivered within 90 minutes or less to an acute cardiac or stroke-care facility.

Police Department

As one of Cincinnati's safest communities, Wyoming is a place families like to call home. The Wyoming Police Department works proactively with residents to strengthen relationships and target education efforts to make sure crime is prevented before it can happen. A key part of this focus is the department's youth outreach. Multiple events and education programs year round allow young people in Wyoming a chance to get to know officers. This helps reduce anxiety about the role of the Police Department and builds stronger bonds between police and community. It is one of many ways the Wyoming Police Department works day-to-day to build a culture of trust and safety throughout the community. Through careful planning, the Police Department has built programming and educational opportunities that give the youth of Wyoming regular, casual contact with officers. These include annual events, such as Wheel-a-thon, May Fete, Touch-a-Truck, the Muddy Pig, and Fall Festival.

Department officers receive training to update skills in a variety of areas as mandated by the state of Ohio. However, Wyoming's officers exceed this expectation with extra hours of training in workplace issues such as diversity awareness, crisis conflict management, de-escalating a mental health crisis, mental health response team training, and professional policing. This continuing education keeps officers on top of the latest standards in high-quality policing.

FINANCIAL INFORMATION

Internal Accounting and Budgetary Controls

The City believed it's internal control structure adequately safeguarded assets and provided reasonable assurance of proper recording of financial transactions. It is further the City's intention to review these controls in depth on an ongoing basis for continued refinements and improvements.

City Council adopts an annual budget for all funds and approves subsequent amendments to the budget as needed. The annual budget serves as the foundation for the city's financial planning and control. The "legal level of control" is the level of detail as approved by Council in its appropriation ordinance.

Budgetary control is maintained at the object level by the use of encumbrances for purchase order amounts to vendors. Open encumbrances are reported as assignments of the fund balance for the governmental fund types at December 31, 2017.

Certificate of Achievement

The Government Finance Officers Association of the United States and Canada (GFOA) awarded a Certificate of Achievement for Excellence in Financial Reporting to the City of Wyoming, Ohio, for its Comprehensive Annual Financial Report for the fiscal year ended December 31, 2016. The Certificate of Achievement is the highest form of recognition for excellence in state and local government financial reporting.

In order to be awarded a Certificate of Achievement, a government unit must publish an easily readable and efficiently organized Comprehensive Annual Financial Report, with contents conforming to program standards. The report must satisfy both generally accepted accounting principles and applicable legal requirements respective to the reporting entity.

A Certificate of Achievement is valid for a period of one year. The City of Wyoming, Ohio, has received a Certificate of Achievement for the years ended December 31, 1992 through December 31, 2016. We believe our current reporting continues to conform to the Certificate of Achievement program requirements, and we are submitting it to GFOA.

Acknowledgements

The preparation of this report was made possible by the efforts of the Finance and Customer Service Department staff. We express our sincere appreciation for the contributions made in the preparation of this report.

The City would also like to thank the staff of Plattenburg and Associates, Inc. for their guidance and support in preparing this report.

A special thanks is extended to City Council and the Department Directors of the City. Their contributions to the financial condition of the City cannot be overemphasized. Their guidance and support represent invaluable factors necessary for the City to continue to manage their financial affairs and reporting requirements of municipal government within the Wyoming community.

Respectfully submitted,



Lynn Tetley
City Manager



Jeremiah Caudill
Finance Director

CITY OF WYOMING, OHIO

LISTING OF PRINCIPAL CITY OFFICIALS DECEMBER 31, 2017

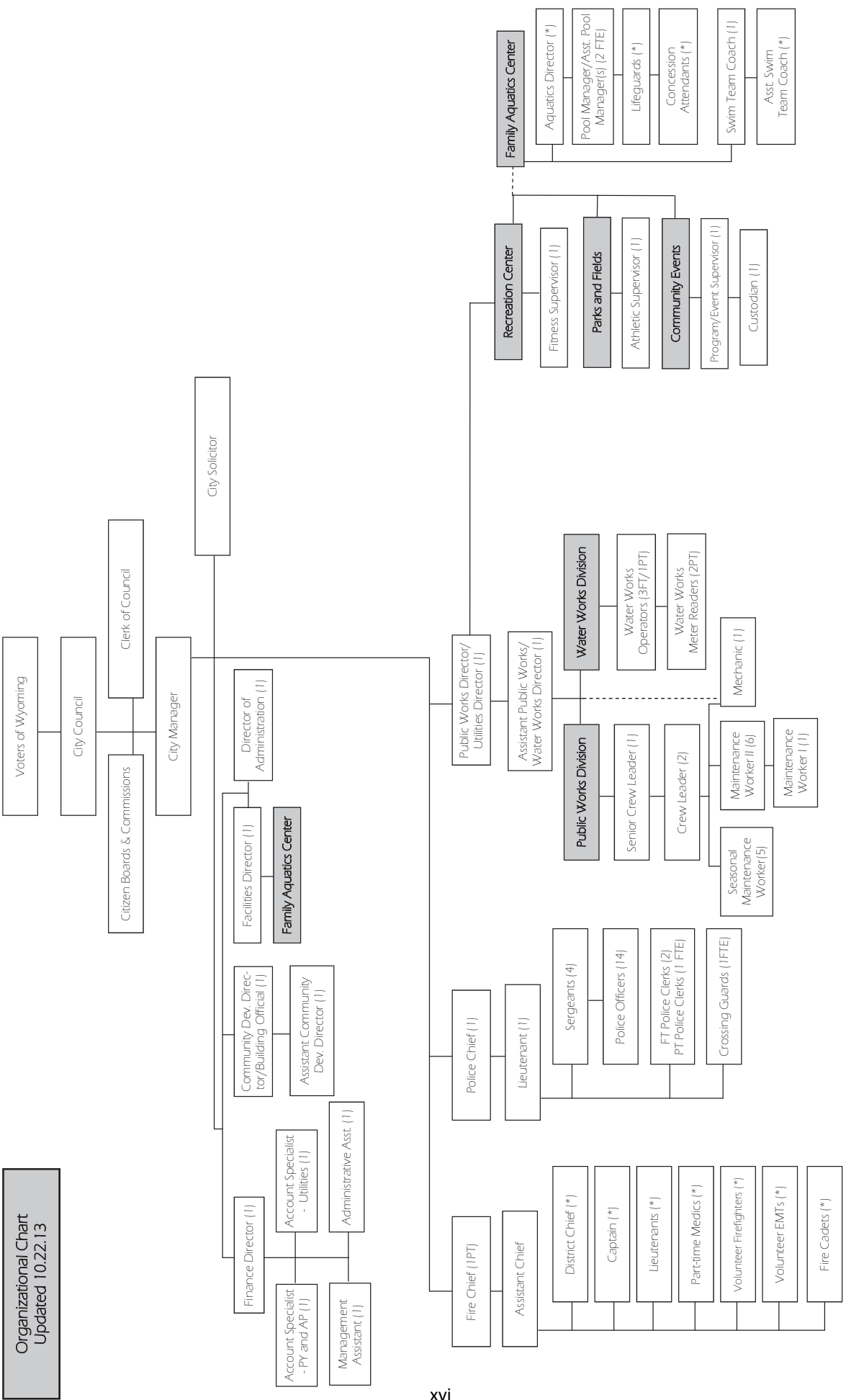
Elected Officials

Mayor	Barry S. Porter
Vice Mayor	Al Delgado
Council Member	Jim O'Reilly
Council Member	Jennifer McCauley
Council Member	Thaddeus Hoffmeister
Council Member	Jeff LeRoy
Council Member	Sarah Stankorb Taylor

Appointed Officials

City Manager	Lynn Tetley
Clerk of Council	Karen Zeilman

**Organizational Chart
Updated 10.22.13**





Government Finance Officers Association

**Certificate of
Achievement
for Excellence
in Financial
Reporting**

Presented to

**City of Wyoming
Ohio**

For its Comprehensive Annual
Financial Report
for the Fiscal Year Ended

December 31, 2016

Christopher P. Morill

Executive Director/CEO

This page intentionally left blank.

FINANCIAL SECTION



This page intentionally left blank.



Dave Yost • Auditor of State

INDEPENDENT AUDITOR'S REPORT

City of Wyoming
Hamilton County
800 Oak Avenue
Wyoming, OH 45215

To the City Council:

Report on the Financial Statements

We have audited the accompanying financial statements of the governmental activities, the business-type activities, each major fund, and the aggregate remaining fund information of the City of Wyoming, Hamilton, Ohio (the City), as of and for the year ended December 31, 2017, and the related notes to the financial statements, which collectively comprise the City's basic financial statements as listed in the table of contents.

Management's Responsibility for the Financial Statements

Management is responsible for preparing and fairly presenting these financial statements in accordance with accounting principles generally accepted in the United States of America; this includes designing, implementing, and maintaining internal control relevant to preparing and fairly presenting financial statements that are free from material misstatement, whether due to fraud or error.

Auditor's Responsibility

Our responsibility is to opine on these financial statements based on our audit. We audited in accordance with auditing standards generally accepted in the United States of America and the financial audit standards in the Comptroller General of the United States' *Government Auditing Standards*. Those standards require us to plan and perform the audit to reasonably assure the financial statements are free from material misstatement.

An audit requires obtaining evidence about financial statement amounts and disclosures. The procedures selected depend on our judgment, including assessing the risks of material financial statement misstatement, whether due to fraud or error. In assessing those risks, we consider internal control relevant to the City's preparation and fair presentation of the financial statements in order to design audit procedures that are appropriate in the circumstances, but not to the extent needed to opine on the effectiveness of the City's internal control. Accordingly, we express no such opinion. An audit also includes evaluating the appropriateness of management's accounting policies and the reasonableness of their significant accounting estimates, as well as our evaluation of the overall financial statement presentation.

We believe the audit evidence we obtained is sufficient and appropriate to support our audit opinions.

Opinion

In our opinion, the financial statements referred to above present fairly, in all material respects, the respective financial position of the governmental activities, the business-type activities, each major fund, and the aggregate remaining fund information of the City of Wyoming, Hamilton, Ohio, as of December 31, 2017, and the respective changes in financial position and, where applicable, cash flows thereof and thereof for the year then ended in accordance with the accounting principles generally accepted in the United States of America.

Other Matters

Required Supplementary Information

Accounting principles generally accepted in the United States of America require this presentation to include *management's discussion and analysis, required budgetary comparison schedule* and schedules of net pension liabilities and pension contributions listed in the table of contents, to supplement the basic financial statements. Although this information is not part of the basic financial statements, the Governmental Accounting Standards Board considers it essential for placing the basic financial statements in an appropriate operational, economic, or historical context. We applied certain limited procedures to the required supplementary information in accordance with auditing standards generally accepted in the United States of America, consisting of inquiries of management about the methods of preparing the information and comparing the information for consistency with management's responses to our inquiries, to the basic financial statements, and other knowledge we obtained during our audit of the basic financial statements. We do not opine or provide any assurance on the information because the limited procedures do not provide us with sufficient evidence to opine or provide any other assurance.

Supplementary and Other Information

Our audit was conducted to opine on the City's basic financial statements taken as a whole.

The introductory section, the financial section's combining statements, individual fund statements and schedules and the statistical section information present additional analysis and are not a required part of the basic financial statements.

The statements and schedules are management's responsibility, and derive from and relate directly to the underlying accounting and other records used to prepare the basic financial statements. We subjected this information to the auditing procedures we applied to the basic financial statements. We also applied certain additional procedures, including comparing and reconciling this information directly to the underlying accounting and other records used to prepare the basic financial statements or to the basic financial statements themselves in accordance with auditing standards generally accepted in the United States of America. In our opinion, this information is fairly stated in all material respects in relation to the basic financial statements taken as a whole.

We did not subject the introductory section and statistical section information to the auditing procedures applied in the audit of the basic financial statements and, accordingly, we express no opinion or any other assurance on them.

Other Reporting Required by Government Auditing Standards

In accordance with *Government Auditing Standards*, we have also issued our report dated June 11, 2018, on our consideration of the City's internal control over financial reporting and our tests of its compliance with certain provisions of laws, regulations, contracts and grant agreements and other matters. That report describes the scope of our internal control testing over financial reporting and compliance, and the results of that testing, and does not opine on internal control over financial reporting or on compliance. That report is an integral part of an audit performed in accordance with *Government Auditing Standards* in considering the City's internal control over financial reporting and compliance.

A handwritten signature in black ink that reads "Dave Yost". The signature is written in a cursive style with a large, looping "D" and "Y".

Dave Yost
Auditor of State

Columbus, Ohio

June 11, 2018

This page intentionally left blank.

City of Wyoming, Ohio
Management's Discussion and Analysis
For The Fiscal Year Ended December 31, 2017
(Unaudited)

The City of Wyoming's discussion and analysis of the annual financial reports provides a review of the financial performance for the fiscal year ending December 31, 2017. This is meant to be an easily readable summary of the most important financial information regarding the accompanying financial statements. Please read it in conjunction with the transmittal letter and the City's basic financial statements and the notes to the basic financial statements.

Financial Highlights

- The City's total net position increased \$1,473,356. Net position of governmental activities increased \$1,154,711, net position of business-type activities increased by \$318,645.
- The General Fund reported a fund balance of \$3,022,298.
- Business-type operations reflected operating income of \$435,969.
- The City had \$10,963,899 in expenses relating to governmental activities; program revenues offset only \$2,327,000 of these expenses. General revenues of \$9,791,610 were also used to provide for these programs.

Overview of the Financial Statements

This annual report consists of a series of financial statements. These statements are presented so that the reader can understand the City's financial situation as a whole and also give a detailed view of the City's fiscal condition.

The Statement of Net Position and the Statement of Activities provide information about the activities of the City as a whole and present a longer-term view of the City's finances. Major fund financial statements provide the next level of detail. For governmental funds, these statements tell how services were financed in the short-term as well as the amount of funds available for future spending. The fund financial statements also look at the City's most significant funds with all other nonmajor funds presented in total in one column.

Government-wide Financial Statements

The analysis of the City as a whole begins with the Government-wide Financial Statements. These reports provide information that will help the reader to determine if the City of Wyoming is financially better off or worse off as a result of the year's activities. These statements include all assets, liabilities and deferred inflows/outflows using the accrual basis of accounting similar to the accounting used by private sector companies. All current year revenues and expenses are taken into account regardless of when cash is received or paid.

These two statements report the City's net position and changes to that position. This change informs the reader whether the City's financial position, as a whole, has improved or diminished. In evaluating the overall financial health, the reader of these financial statements needs to take into account non-financial factors that also impact the City's financial well-being. Some of these factors include the City's tax base and the condition of capital assets.

City of Wyoming, Ohio
Management's Discussion and Analysis
For The Fiscal Year Ended December 31, 2017
(Unaudited)

In the Government-wide Financial Statements, the City is divided into two kinds of activities.

- **Governmental Activities** - Most of the City's program services are reported here including general government, public safety, leisure time activities, community development, basic utility service, transportation and street repair, public health and welfare, interest and fiscal charges. Income taxes, property taxes, building permits and interest finance most of these activities.
- **Business-Type Activities** - This service includes Water. Service fees for these operations are charged based upon the amount of usage or a usage fee. The intent is that the fees charged recoup operational costs.

Fund Financial Statements

The analysis of the City's major funds is presented later in the Management's Discussion and Analysis section. Fund financial statements provide detailed information about the City's major funds - not the City as a whole. Some funds are required by State law and bond covenants. Other funds may be established by the Finance Director, with approval of council, to help control, manage and report money received for a particular purpose or to show that the City is meeting legal responsibilities for use of grants. The City's major funds are General, Capital Improvement, Equipment Replacement and Waterworks Fund.

Governmental Funds - Most of the City's services are reported in governmental funds, which focus on how money flows into and out of those funds and the balances left at year-end that are available for spending. These funds are reported using an accounting method called modified accrual accounting, which measures cash and all other financial assets that can readily be converted to cash. The governmental fund statements provide a detailed short-term view of the City's general government operations and the basic services it provides. Governmental fund information helps to determine whether there are more or less financial resources that can be spent in the near future on services provided to our residents. The relationship (or differences) between governmental activities (reported in the Statement of Net Position and the Statement of Activities) and governmental funds is reconciled in the financial statements.

Proprietary Funds - When the City charges citizens for the services it provides, with the intent of recapturing operating costs, these services are generally reported in proprietary funds. Proprietary funds use the same basis of accounting as business-type activities; therefore, these statements will essentially match.

Fiduciary Funds - The City is the fiscal agent for the Metropolitan Sewer District (accounted for in the sewer fund) and for the Mayor's Court (accounted for in the Mayor's Court fund). The City's fiduciary activities are reported in separate Statement of Fiduciary Net Position and Statement of Changes in Fiduciary Net Position. We exclude these activities from the City's other financial statements because the City cannot use these assets to finance its operations. The City is responsible for ensuring that the assets reported in these funds are used for their intended purposes.

This page intentionally left blank.

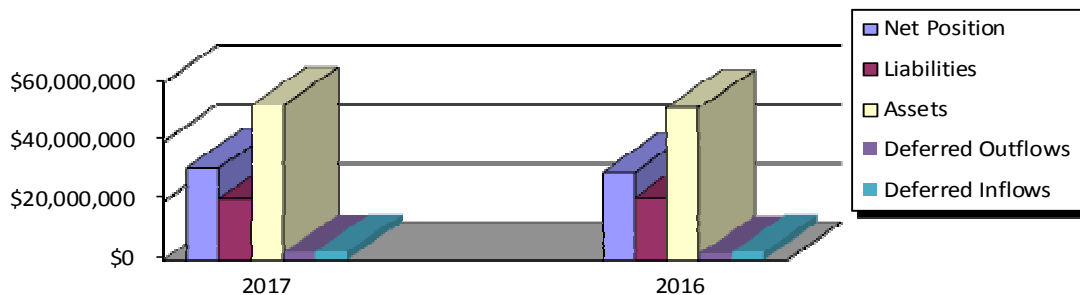
City of Wyoming, Ohio
Management's Discussion and Analysis
For The Fiscal Year Ended December 31, 2017
(Unaudited)

The City as a Whole

As stated previously, the Statement of Net Position looks at the City as a whole. Table 1 provides a summary of the City's net position for 2017 compared to 2016.

Table 1
Net Position

	Governmental Activities		Business-Type Activities		Total	
	2017	2016	2017	2016	2017	2016
Assets:						
Current and Other Assets	\$10,749,446	\$10,891,273	\$1,696,560	\$1,570,384	\$12,446,006	\$12,461,657
Capital Assets	32,418,774	31,254,937	7,531,703	7,777,050	39,950,477	39,031,987
Total Assets	43,168,220	42,146,210	9,228,263	9,347,434	52,396,483	51,493,644
Deferred Outflows:						
Deferred Charge on Refunding Pension	421,208	113,882	92,764	107,036	513,972	220,918
	1,929,622	1,879,897	171,542	134,597	2,101,164	2,014,494
Total Deferred Outflows	2,350,830	1,993,779	264,306	241,633	2,615,136	2,235,412
Liabilities:						
Long-Term Liabilities	16,826,640	16,548,646	3,721,023	4,127,245	20,547,663	20,675,891
Other Liabilities	365,305	484,389	34,700	41,806	400,005	526,195
Total Liabilities	17,191,945	17,033,035	3,755,723	4,169,051	20,947,668	21,202,086
Deferred Inflows:						
Property Taxes	2,593,596	2,579,666	0	0	2,593,596	2,579,666
Pension	152,924	101,414	4,868	6,683	157,792	108,097
Total Deferred Inflows	2,746,520	2,681,080	4,868	6,683	2,751,388	2,687,763
Net Position:						
Net Investment in Capital Assets	23,807,060	22,007,326	4,417,560	4,163,666	28,224,620	26,170,992
Restricted	1,385,826	957,802	0	0	1,385,826	957,802
Unrestricted	387,699	1,460,546	1,314,418	1,249,667	1,702,117	2,710,213
Total Net Position	\$25,580,585	\$24,425,674	\$5,731,978	\$5,413,333	\$31,312,563	\$29,839,007



Total net position of the City as a whole increased \$1,473,356. Net position of the City's governmental activities increased \$1,154,711, while the net position of the City's business-type activities increased \$318,645 from 2016. The largest portion of the City's net position reflect its investment in capital assets, less any related debt to acquire those assets that are still outstanding. The City uses these capital assets to provide services to citizens of the City. The City had an unrestricted net position balance of that may be used to meet the government's ongoing obligations to citizens and creditors.

City of Wyoming, Ohio
Management's Discussion and Analysis
For The Fiscal Year Ended December 31, 2017
(Unaudited)

Governmental Activities capital assets increased mainly due to current year depreciation expense being less than current year additions. Long-term liabilities increased due to the increase in net pension liability.

Business-Type Activities capital assets decreased mainly due to current year depreciation expense being greater than current year additions. Long-term liabilities decreased due to the City making regularly scheduled debt payments.

Table 2 shows the changes in net position at year-end.

Table 2
Changes in Net Position

	Governmental Activities		Business-Type Activities		Total	
	2017	2016	2017	2016	2017	2016
Program Revenues:						
Charges for Services	\$1,338,615	\$1,120,200	\$1,912,838	\$1,851,152	\$3,251,453	\$2,971,352
Operating Grants and Contributions	421,663	424,444	0	11,258	421,663	435,702
Capital Grants and Contributions	566,722	206,750	0	0	566,722	206,750
Total Program Revenues	2,327,000	1,751,394	1,912,838	1,862,410	4,239,838	3,613,804
General Revenues:						
Income Taxes	6,229,982	5,841,680	0	0	6,229,982	5,841,680
Property Taxes	2,668,658	2,656,859	0	0	2,668,658	2,656,859
Grants and Entitlements	483,145	487,973	0	0	483,145	487,973
Investment Earnings	(21,706)	27,033	11,116	16,272	(10,590)	43,305
Other Revenues	431,531	382,075	0	0	431,531	382,075
Total General Revenues	9,791,610	9,395,620	11,116	16,272	9,802,726	9,411,892
Total Revenues	12,118,610	11,147,014	1,923,954	1,878,682	14,042,564	13,025,696
Program Expenses:						
General Government	2,741,947	2,788,605	0	0	2,741,947	2,788,605
Public Safety	3,485,593	2,922,948	0	0	3,485,593	2,922,948
Community Development	444,133	424,046	0	0	444,133	424,046
Leisure Time	1,534,291	1,414,283	0	0	1,534,291	1,414,283
Transportation and Street Repair	1,799,822	1,950,312	0	0	1,799,822	1,950,312
Public Health and Welfare	35,706	19,133	0	0	35,706	19,133
Basic Utility Services	586,481	577,672	0	0	586,481	577,672
Interest and Fiscal Charges	335,926	378,415	0	0	335,926	378,415
Waterworks	0	0	1,605,309	1,781,596	1,605,309	1,781,596
Total Program Expenses	10,963,899	10,475,414	1,605,309	1,781,596	12,569,208	12,257,010
Change in Net Position	1,154,711	671,600	318,645	97,086	1,473,356	768,686
Net Position - Beginning of Year	24,425,874	23,754,274	5,413,333	5,316,247	29,839,207	29,070,521
Net Position - End of Year	\$25,580,585	\$24,425,874	\$5,731,978	\$5,413,333	\$31,312,563	\$29,839,207

Governmental Activities

Grants and Entitlements decreased mainly due to a decrease in grant receipts. Overall expenses increased mainly due to increases in personnel costs and general inflationary factors.

City of Wyoming, Ohio
Management's Discussion and Analysis
For The Fiscal Year Ended December 31, 2017
(Unaudited)

The Wyoming City Council continued to actively promote its Vision Statement and Master Plan Initiatives that were created in 1995 and updated in 2007 through the dedicated and professional combination of residents and city officials. Primarily a residential bedroom community with a population of 8,428 living in 2.8 square miles, Wyoming relies heavily upon income and property tax revenues to provide general services and maintain infrastructure. The 1.0% income tax (based on a resident's Adjusted Gross Income) and the 10 mill property tax represented approximately 90% of the City's total governmental activities general revenues in 2017.

General Government includes legislative and executive as well as judicial expenses. The level of services provided to City residents continues to be very high. The City seeks to improve the quality and efficiency of existing services as well as consider additional services. Leaf and brush pickup, mulch distribution, refuse collection, aggressive street reconstruction programs, street cleaning, sidewalk in-fill projects, amenities in the parks, and police and volunteer/part time Fire/EMS services all culminate into a full service city. Services in the City of Wyoming have increased and become more efficient over the years. This has been accomplished by the City Council and employees.

Business-Type Activities

The City's business-type activities included Waterworks.

The Waterworks Fund had operating revenues of \$1,912,838 and operating expenses of \$1,476,869 for 2017. Business-type activities receive no support from tax revenues. The business-type activities had operating income of \$435,969 and net position at the end of the year was \$5,731,978 which increased \$318,645 from 2016. Charges for services in the Waterworks Fund increased in 2017 compared to 2016 mainly due to an increase in consumption for water services. Water Utilities expenses decreased due to a decrease in materials and supplies purchases throughout the City.

The City's Funds

The City has three major governmental funds: the General Fund, Capital Improvement Fund and Equipment Replacement Fund. Assets of these funds comprised \$10,041,860 (93%) of the total \$10,854,227 governmental funds' assets.

General Fund: Fund balance at December 31, 2017 was \$3,022,298 a decrease in fund balance of \$46,539 from 2016. The decrease in fund balance is mainly due to an increase in expenditures.

Capital Improvement Fund: Fund balance at December 31, 2017 was \$604,321 an increase in fund balance of \$394,730 from 2016. The capital improvement fund balance increased mainly due to an increase in grant monies received.

Equipment Replacement Fund: Fund balance at December 31, 2017 was \$1,254,335 a decrease in fund balance of \$452,747 from 2016. The Equipment Replacement Fund balance decreased mainly due to an increase in capital outlay expenditures.

City of Wyoming, Ohio
Management’s Discussion and Analysis
For The Fiscal Year Ended December 31, 2017
(Unaudited)

General Fund Budgeting Highlights

The City’s General Fund budget is formally adopted at the object level. Financial reports, which compare actual performance with the budget, are prepared monthly and presented to the Council so the Council is able to review the City’s financial status and measure the effectiveness of budgetary controls.

As the City completed the year, its General Fund balance reported an actual fund balance of \$1,472,597 on a Non-GAAP Budgetary Basis. For the General Fund, the final budgeted revenue was \$9,620,101 and the original budgeted revenue was \$9,524,621.

Variations from the final amended budget amounts to the actual amounts are primarily due to the following reasons: The City underestimated the taxes and income taxes revenue amounts and overestimated the general government and public safety expenditures for 2017.

Capital Assets and Debt Administration

Capital Assets

At year end, the City had \$39,950,477 invested in land (includes permanent easements), construction in progress, buildings and improvements, equipment and infrastructure, net of accumulated depreciation.

Table 3 shows 2017 balances compared to 2016:

Table 3
Capital Assets

	Governmental Activities		Business-Type Activities		Total	
	2017	2016	2017	2016	2017	2016
Land	\$9,110,758	\$9,099,508	\$52,172	\$52,172	\$9,162,930	\$9,151,680
Construction in Progress	1,001,894	1,131,672	0	0	1,001,894	1,131,672
Easements	474,448	474,448	314,158	314,158	788,606	788,606
Buildings and Improvements	13,525,484	12,108,286	7,624,270	7,624,270	21,149,754	19,732,556
Equipment	4,919,482	5,048,939	731,270	716,582	5,650,752	5,765,521
Infrastructure	15,947,780	15,191,277	4,593,212	4,593,212	20,540,992	19,784,489
Accumulated Depreciation	(12,561,072)	(11,799,193)	(5,783,379)	(5,523,344)	(18,344,451)	(17,322,537)
Total Net Capital Assets	\$32,418,774	\$31,254,937	\$7,531,703	\$7,777,050	\$39,950,477	\$39,031,987

Increases in Governmental Activities capital assets were mainly due to the current year depreciation expense being less than current year additions. Decreases in Business-Type Activities Capital assets were mainly due to the current year depreciation expense exceeding current year additions.

See Note 6 to the notes to the basic financial statements for further details on the City’s capital assets.

City of Wyoming, Ohio
Management's Discussion and Analysis
For The Fiscal Year Ended December 31, 2017
(Unaudited)

Debt

At year-end the City had \$12,244,255 in unvoted general obligation bonds and notes.

Table 4
Outstanding Debt at Year End

		2017	2016
Governmental Activities			
<u>General Obligation Bonds and Notes</u>			
2006 Various Purpose Bonds	4.00-5.00%	0	3,030,000
2009 Various Purpose Bonds	4.02%	460,538	3,606,690
OPWC - Chisholm Improvements	0.00%	133,364	177,806
2012 Refunding Bonds - Property Acquisition	2.00-4.00%	595,000	685,000
2012 Refunding Bonds - Wyoming Business District	2.00-3.00%	70,000	140,000
2012 Refunding Bonds - Various Purpose Bonds	2.00-4.00%	757,809	852,309
OPWC - Hilltop Improvements	0.02%	215,630	245,890
OPWC - Wilmuth Avenue Rehabilitation	0.00%	114,830	118,931
OPWC - Worthington Avenue Rehabilitation	0.00%	143,548	148,675
OPWC - Springfield Pike	0.00%	370,445	266,695
2012 Refunding Bonds - Premium	n/a	74,238	89,497
2017 Refunding Bonds		5,536,173	0
2017 Refunding Bonds Premium	n/a	561,347	0
Total General Obligation Bonds and Notes		<u>9,032,922</u>	<u>9,361,493</u>
Business-Type Activities			
<u>General Obligation Bonds and Notes</u>			
OPWC - Van Roberts Place	3.00%	13,214	19,532
OPWC - Waterplant	3.00%	1,151,894	1,459,551
OPWC - Hilltop Improvements	0.02%	120,535	132,402
2009 Various Purpose Bonds	4.02%	114,462	878,310
2012 Refunding Bonds - Various Purpose	2.00-4.00%	1,042,191	1,172,691
2012 Refunding Bonds - Premium	n/a	50,210	57,934
2017 Refunding Bonds		718,827	0
Total General Obligation Bonds and Notes		<u>3,211,333</u>	<u>3,720,420</u>
Total Debt		<u>\$12,244,255</u>	<u>\$13,081,913</u>

See Note 8 to the notes to the basic financial statements for further details on the City's long-term debt.

Contacting The City's Finance Department

This financial report is designed to provide our citizens, taxpayers, customers and investors, and creditors with a general overview of the City's finances and to show the City's accountability for the money it receives. If you have any questions about this report or need additional financial information, contact Jeremiah Caudill, Finance Director, City of Wyoming, 800 Oak Avenue, Wyoming, Ohio 45215.

City of Wyoming, Ohio
Statement of Net Position
December 31, 2017

	Governmental Activities	Business-Type Activities	Total
Assets:			
Equity in Pooled Cash and Investments	\$5,233,126	\$1,358,318	\$6,591,444
Restricted Cash	17,722	0	17,722
Receivables (Net):			
Taxes	4,247,850	0	4,247,850
Accounts	133,684	398,697	532,381
Interest	9,283	746	10,029
Intergovernmental	438,415	0	438,415
Loans	509,223	0	509,223
Internal Balances	97,500	(97,500)	0
Inventory	62,643	36,299	98,942
Nondepreciable Capital Assets	10,587,100	366,330	10,953,430
Depreciable Capital Assets, Net	21,831,674	7,165,373	28,997,047
Total Assets	43,168,220	9,228,263	52,396,483
Deferred Outflows of Resources:			
Deferred Charge on Refunding Pension	421,208	92,764	513,972
	1,929,622	171,542	2,101,164
Total Deferred Outflows of Resources	2,350,830	264,306	2,615,136
Liabilities:			
Accounts Payable	179,927	15,310	195,237
Accrued Wages and Benefits	116,975	10,838	127,813
Retainage Payable	17,722	0	17,722
Accrued Interest Payable	23,148	8,552	31,700
Claims Payable	27,533	0	27,533
Long-Term Liabilities:			
Due Within One Year	851,136	524,948	1,376,084
Due In More Than One Year			
Net Pension Liability	6,951,033	443,183	7,394,216
Other Amounts	9,024,471	2,752,892	11,777,363
Total Liabilities	17,191,945	3,755,723	20,947,668
Deferred Inflows of Resources:			
Property Taxes	2,593,596	0	2,593,596
Pension	152,924	4,868	157,792
Total Deferred Inflows of Resources	2,746,520	4,868	2,751,388
Net Position:			
Net Investment in Capital Assets	23,807,060	4,417,560	28,224,620
Restricted for:			
Capital Projects	584,607	0	584,607
Street Improvements	613,935	0	613,935
State Highway	152,948	0	152,948
Other Purposes	34,336	0	34,336
Unrestricted	387,699	1,314,418	1,702,117
Total Net Position	\$25,580,585	\$5,731,978	\$31,312,563

See accompanying notes to the basic financial statements.

City of Wyoming, Ohio
Statement of Activities
For the Fiscal Year Ended December 31, 2017

	Expenses	Program Revenues		
		Charges for Services and Sales	Operating Grants and Contributions	Capital Grants and Contributions
Governmental Activities:				
General Government	\$2,741,947	\$193,009	\$1,000	\$0
Public Safety	3,485,593	136,547	0	0
Community Development	444,133	0	0	0
Leisure Time Activities	1,534,291	892,385	0	566,722
Transportation and Street Repair	1,799,822	3,300	420,663	0
Basic Utility Service	586,481	113,374	0	0
Public Health and Welfare	35,706	0	0	0
Interest and Other Charges	335,926	0	0	0
Total Governmental Activities	10,963,899	1,338,615	421,663	566,722
Business-Type Activities:				
Waterworks	1,605,309	1,912,838	0	0
Total Business-Type Activities	1,605,309	1,912,838	0	0
Totals	\$12,569,208	\$3,251,453	\$421,663	\$566,722

General Revenues:
Income Taxes
Property Taxes Levied for:
 General Purposes
Grants and Entitlements, Not Restricted
Investment Earnings
Refunds and Reimbursements
Other Revenues

Total General Revenues and Transfers

Change in Net Position

Net Position - Beginning of Year

Net Position - End of Year

See accompanying notes to the basic financial statements.

Net (Expense) Revenue and Changes in Net Position		
Governmental Activities	Business-Type Activities	Total
(\$2,547,938)	\$0	(\$2,547,938)
(3,349,046)	0	(3,349,046)
(444,133)	0	(444,133)
(75,184)	0	(75,184)
(1,375,859)	0	(1,375,859)
(473,107)	0	(473,107)
(35,706)	0	(35,706)
(335,926)	0	(335,926)
<u>(8,636,899)</u>	<u>0</u>	<u>(8,636,899)</u>
<u>0</u>	<u>307,529</u>	<u>307,529</u>
<u>0</u>	<u>307,529</u>	<u>307,529</u>
<u>(8,636,899)</u>	<u>307,529</u>	<u>(8,329,370)</u>
6,229,982	0	6,229,982
2,668,658	0	2,668,658
483,145	0	483,145
(21,706)	11,116	(10,590)
403,274	0	403,274
28,257	0	28,257
<u>9,791,610</u>	<u>11,116</u>	<u>9,802,726</u>
1,154,711	318,645	1,473,356
<u>24,425,874</u>	<u>5,413,333</u>	<u>29,839,207</u>
<u>\$25,580,585</u>	<u>\$5,731,978</u>	<u>\$31,312,563</u>

City of Wyoming, Ohio
Balance Sheet
Governmental Funds
December 31, 2017

	General	Capital Improvement	Equipment Replacement	Other Governmental Funds	Total Governmental Funds
Assets:					
Equity in Pooled Cash and Investments	\$2,718,841	\$788,755	\$1,180,218	\$545,312	\$5,233,126
Restricted Cash	0	17,722	0	0	17,722
Receivables (Net):					
Taxes	4,247,850	0	0	0	4,247,850
Accounts	133,684	0	0	0	133,684
Interest	8,540	0	0	743	9,283
Intergovernmental	234,746	0	0	203,669	438,415
Loans	509,223	0	0	0	509,223
Interfund	128,164	0	74,117	0	202,281
Inventory	0	0	0	62,643	62,643
Total Assets	7,981,048	806,477	1,254,335	812,367	10,854,227
Liabilities:					
Accounts Payable	92,900	79,653	0	7,374	179,927
Accrued Wages and Benefits	115,068	0	0	1,907	116,975
Retainage Payable	0	17,722	0	0	17,722
Interfund Payable	0	104,781	0	0	104,781
Claims Payable	27,533	0	0	0	27,533
Total Liabilities	235,501	202,156	0	9,281	446,938
Deferred Inflows of Resources:					
Property Taxes	2,652,046	0	0	0	2,652,046
Income Taxes	1,316,078	0	0	0	1,316,078
Grants and Other Taxes	227,218	0	0	173,801	401,019
Accounts and Investment Earnings	18,684	0	0	129	18,813
Loans	509,223	0	0	0	509,223
Total Deferred Inflows of Resources	4,723,249	0	0	173,930	4,897,179
Fund Balances:					
Nonspendable	0	0	0	62,643	62,643
Restricted	0	604,321	0	566,467	1,170,788
Committed	0	0	1,254,335	0	1,254,335
Assigned	1,112,009	0	0	46	1,112,055
Unassigned	1,910,289	0	0	0	1,910,289
Total Fund Balances	3,022,298	604,321	1,254,335	629,156	5,510,110
Total Liabilities, Deferred Inflows and Fund Balances	\$7,981,048	\$806,477	\$1,254,335	\$812,367	\$10,854,227

See accompanying notes to the basic financial statements.

City of Wyoming, Ohio
 Reconciliation of Total Governmental Fund Balance to
 Net Position of Governmental Activities
 December 31, 2017

Total Governmental Fund Balance \$5,510,110

Amounts reported for governmental activities in the
 statement of net position are different because:

Capital assets used in governmental activities are not financial
 resources and, therefore, are not reported in the funds.

Capital assets used in the operation of Governmental Funds 32,418,774

Other long-term assets are not available to pay for current-
 period expenditures and, therefore, are deferred in the funds.

Income Taxes	\$1,316,078	
Delinquent Property Taxes	58,450	
Interest	1,612	
Intergovernmental	401,019	
Other Receivables	526,424	
		2,303,583

In the statement of net position interest payable is accrued when
 incurred; whereas, in the governmental funds interest is
 reported as a liability only when it will require the use of
 current financial resources. (23,148)

Some liabilities reported in the statement of net position do not
 require the use of current financial resources and, therefore,
 are not reported as liabilities in governmental funds.

Compensated Absences (705,221)

Deferred outflow of resources associated with long-term liabilities
 are not reported in the funds. 421,208

Deferred outflows and inflows or resources related to pensions
 are applicable to future periods and, therefore, are not
 reported in the funds.

Deferred outflows of resources related to pensions	1,929,622	
Deferred inflows of resources related to pensions	(152,924)	
		1,776,698

Long-term liabilities are not due and payable in the current
 period and, therefore, are not reported in the funds.

Net Pension Liability	(6,951,033)	
Other Amounts	(9,170,386)	
		(16,121,419)

Net Position of Governmental Activities \$25,580,585

See accompanying notes to the basic financial statements.

City of Wyoming, Ohio
Statement of Revenues, Expenditures
and Changes in Fund Balance
Governmental Funds
For the Fiscal Year Ended December 31, 2017

	General	Capital Improvement	Equipment Replacement	Other Governmental Funds	Total Governmental Funds
Revenues:					
Property and Other Taxes	\$2,672,404	\$0	\$0	\$0	\$2,672,404
Income Taxes	6,103,977	0	0	0	6,103,977
Charges for Services	1,132,869	0	0	0	1,132,869
Investment Earnings	29,688	0	0	2,132	31,820
Intergovernmental	485,269	566,722	0	424,574	1,476,565
Fines, Licenses & Permits	184,354	0	0	21,424	205,778
Other Revenues	333,802	6,091	5,893	0	345,786
Total Revenues	10,942,363	572,813	5,893	448,130	11,969,199
Expenditures:					
Current:					
General Government	2,506,097	0	0	0	2,506,097
Public Safety	2,859,056	0	0	15,350	2,874,406
Community Development	260,997	0	0	0	260,997
Leisure Time Activities	1,266,228	0	0	0	1,266,228
Transportation and Street Repair	738,566	0	0	253,128	991,694
Basic Utility Service	586,481	0	0	0	586,481
Public Health and Welfare	35,706	0	0	0	35,706
Capital Outlay	0	1,931,424	486,896	156,765	2,575,085
Debt Service:					
Principal	5,225	731,468	0	70,000	806,693
Interest and Other Charges	6,009	287,982	0	4,200	298,191
Total Expenditures	8,264,365	2,950,874	486,896	499,443	12,201,578
Excess of Revenues Over (Under) Expenditures	2,677,998	(2,378,061)	(481,003)	(51,313)	(232,379)
Other Financing Sources (Uses):					
Proceeds from Sale of Capital Assets	0	0	28,256	0	28,256
Issuance of Long-Term Capital-Related Debt	0	103,750	0	0	103,750
Proceeds from Bond Refunding	0	5,785,211	0	0	5,785,211
Payments to Refunded Bond Escrow Agent	0	(6,330,933)	0	0	(6,330,933)
Premium on Debt Issuance	0	563,062	0	0	563,062
Transfers In	0	2,651,701	0	72,836	2,724,537
Transfers (Out)	(2,724,537)	0	0	0	(2,724,537)
Total Other Financing Sources (Uses)	(2,724,537)	2,772,791	28,256	72,836	149,346
Net Change in Fund Balance	(46,539)	394,730	(452,747)	21,523	(83,033)
Fund Balance - Beginning of Year	3,068,837	209,591	1,707,082	600,190	5,585,700
Change in Nonspendable for Inventory	0	0	0	7,443	7,443
Fund Balance - End of Year	\$3,022,298	\$604,321	\$1,254,335	\$629,156	\$5,510,110

See accompanying notes to the basic financial statements.

City of Wyoming, Ohio
 Reconciliation of the Statement of Revenues, Expenditures, and Changes
 in Fund Balance of Governmental Funds to the Statement of Activities
 For the Fiscal Year Ended December 31, 2017

Net Change in Fund Balance - Total Governmental Funds (\$83,033)

Amounts reported for governmental activities in the statement of activities are different because:

Governmental funds report capital asset additions as expenditures. However, in the statement of activities, the cost of those assets is allocated over their estimated useful lives as depreciation expense. This is the amount of the difference between capital asset additions and depreciation in the current period.

Capital assets used in governmental activities	\$2,201,557	
Depreciation Expense	<u>(1,037,720)</u>	1,163,837

Governmental funds report City pension contributions as expenditures. However in the Statement of Activities, the cost of pension benefits earned net of employee contributions is reported as pension expense.

City pension contributions	547,743	
Cost of benefits earned net of employee contributions	<u>(1,134,693)</u>	(586,950)

Revenues in the statement of activities that do not provide current financial resources are not reported as revenues in the funds.

Income Taxes	126,005	
Delinquent Property Taxes	(3,746)	
Interest	1,612	
Intergovernmental	(5,034)	
Other	<u>(45,070)</u>	73,767

In the statement of activities, certain costs and proceeds associated with long-term debt obligations issued during the year are accrued and amortized over the life of the debt obligation. In governmental funds these costs and proceeds are recognized as financing sources and uses.

Premium on Bonds Issued	(563,062)	
Deferred Amount on Refunding	368,748	
Refunding Bonds	(5,785,211)	
Bonds Refunded	<u>5,962,152</u>	(17,373)

Repayment of bond principal is an expenditure in the governmental funds, but the repayment reduces long-term liabilities in the statement of net position. 806,693

In the statement of activities interest expense is accrued when incurred; whereas, in governmental funds an interest expenditure is reported when due. 6,746

Some expenses reported in the statement of activities do not require the use of current financial resources and, therefore, are not reported as expenditures in governmental funds.

Compensated Absences	(68,221)	
Amortization of Bond Premium	16,974	
Amortization of Deferred Charge on Refunding	(61,422)	
Change in Inventory	<u>7,443</u>	(105,226)

Proceeds from debt issues are an other financing source in the funds, but a debt issue increases long-term liabilities in the statement of net position. (103,750)

Change in Net Position of Governmental Activities \$1,154,711

See accompanying notes to the basic financial statements.

City of Wyoming, Ohio
Statement of Net Position
Proprietary Funds
December 31, 2017

	<u>Waterworks</u>
Current Assets:	
Equity in Pooled Cash and Investments	\$1,358,318
Receivables (Net):	
Accounts	398,697
Interest	746
Inventory	<u>36,299</u>
Total Current Assets	<u>1,794,060</u>
Noncurrent Assets:	
Capital Assets:	
Nondepreciable Capital Assets	366,330
Depreciable Capital Assets, Net	<u>7,165,373</u>
Total Noncurrent Assets	<u>7,531,703</u>
Total Assets	<u>9,325,763</u>
Deferred Outflows of Resources:	
Deferred Charge on Refunding	92,764
Pension	<u>171,542</u>
Total Deferred Outflows of Resources	<u>264,306</u>
Liabilities:	
Current Liabilities:	
Accounts Payable	15,310
Accrued Wages and Benefits	10,838
Compensated Absences	2,852
Accrued Interest Payable	8,552
Interfund Payable	97,500
Long-Term Liabilities Due Within One Year	<u>522,096</u>
Total Current Liabilities	<u>657,148</u>
Long-Term Liabilities:	
Compensated Absences	63,655
Bonds, Notes & Loans Payable	2,689,237
Net Pension Liability	<u>443,183</u>
Total Noncurrent Liabilities	<u>3,196,075</u>
Total Liabilities	<u>3,853,223</u>
Deferred Inflows of Resources:	
Pension	<u>4,868</u>
Total Deferred Inflows of Resources	<u>4,868</u>
Net Position:	
Net Investment in Capital Assets	4,417,560
Unrestricted	<u>1,314,418</u>
Total Net Position	<u>\$5,731,978</u>

See accompanying notes to the basic financial statements.

City of Wyoming, Ohio
Statement of Revenues, Expenses
and Changes in Fund Net Position
Proprietary Funds
For the Fiscal Year Ended December 31, 2017

	<u>Waterworks</u>
Operating Revenues:	
Charges for Services	<u>\$1,912,838</u>
Total Operating Revenues	<u>1,912,838</u>
Operating Expenses:	
Personal Services	591,415
Contactual Services	356,153
Materials and Supplies	268,149
Depreciation	260,035
Other Expense	<u>1,117</u>
Total Operating Expenses	<u>1,476,869</u>
Operating Income	<u>435,969</u>
Non-Operating Revenues (Expenses):	
Investment Earnings	11,116
Interest and Fiscal Charges	<u>(128,440)</u>
Total Non-Operating Revenues (Expenses)	<u>(117,324)</u>
Change in Net Position	318,645
Net Position - Beginning of Year	<u>5,413,333</u>
Net Position - End of Year	<u>\$5,731,978</u>

See accompanying notes to the basic financial statements.

City of Wyoming, Ohio
Statement of Cash Flows
Proprietary Funds
For the Fiscal Year Ended December 31, 2017

	<u>Waterworks</u>
Cash Flows from Operating Activities:	
Cash Received from Customers	\$1,874,301
Cash Payments to Employees	(523,302)
Cash Payments to Suppliers	<u>(645,357)</u>
Net Cash Provided (Used) by Operating Activities	<u>705,642</u>
Cash Flows from Noncapital Financing Activities:	
Payments from Other Funds	648,254
Payments to Other Funds	<u>(710,754)</u>
Net Cash Provided (Used) by Noncapital Financing Activities	<u>(62,500)</u>
Cash Flows from Capital and Related Financing Activities:	
Payments for Capital Acquisitions	(14,688)
Debt Proceeds	40
Debt Principal Payments	(508,305)
Debt Interest Payments	<u>(113,405)</u>
Net Cash Provided (Used) by Capital and Related Financing Activities	<u>(636,358)</u>
Cash Flows from Investing Activities:	
Earnings on Investments	<u>11,889</u>
Net Cash Provided (Used) by Cash Flows from Investing Activities	<u>11,889</u>
Net Increase (Decrease) in Cash and Cash Equivalents	18,673
Cash and Cash Equivalents - Beginning of Year	<u>1,339,645</u>
Cash and Cash Equivalents - End of Year	<u><u>1,358,318</u></u>
Reconciliation of Operating Income (Loss) to Net Cash Provided (Used) by Operating Activities	
Operating Income (Loss)	435,969
Adjustments:	
Depreciation	260,035
Changes in Assets & Liabilities:	
(Increase) Decrease in Receivables	(38,537)
(Increase) Decrease in Inventory	(7,239)
(Increase) Decrease in Deferred Outflows of Resources	(36,945)
Increase (Decrease) in Payables	(12,699)
Increase (Decrease) in Accrued Liabilities	9,568
Increase (Decrease) in Deferred Inflows of Resources	(1,815)
Increase (Decrease) in Net Pension Liability	<u>97,305</u>
Net Cash Provided (Used) by Operating Activities	<u>\$705,642</u>

See accompanying notes to the basic financial statements.

City of Wyoming, Ohio
Statement of Fiduciary Net Position
Fiduciary Funds
December 31, 2017

	<u>Agency</u>
Assets:	
Equity in Pooled Cash and Investments	\$329,709
Receivables (Net):	
Accounts	<u>601,410</u>
Total Assets	<u><u>931,119</u></u>
Liabilities:	
Undistributed Monies	<u>931,119</u>
Total Liabilities	<u><u>\$931,119</u></u>

See accompanying notes to the basic financial statements.

City of Wyoming, Ohio
Notes to the Basic Financial Statements
For The Fiscal Year Ended December 31, 2017

Note 1 – Description of the City and Reporting Entity

The City of Wyoming (City) is a political body incorporated and established for the purpose of exercising the rights and privileges conveyed to it by the constitution and laws of the State of Ohio.

The City operates under a council-manager form of government and provides the following services as authorized by its charter: public safety, public services, recreation and development.

Reporting Entity

A reporting entity is comprised of the primary government, component units and other organizations that are included to ensure that financial statements are not misleading. The primary government of the City consists of all funds, departments, boards and agencies that are not legally separate from the City. For the City, this includes; police and fire, parks and recreation, planning, zoning, community development, street maintenance, water, sewer and waste collection. Council and the City Manager have direct responsibility for these activities.

Component units are legally separate organizations for which the City is financially accountable. The City is financially accountable for an organization if the City appoints a voting majority of the organization's governing board; and (1) the City is able to significantly influence the programs or services performed or provided by the organization; or (2) the City is legally entitled to or can otherwise access the organization's resources; the City is legally obligated or has otherwise assumed the responsibility to finance the deficits of, or provide financial support to, the organization; or the City is obligated for the debt of the organizations. Component units may also include organizations for which the City authorizes the issuance of debt or the levying of taxes, or determines the budget. There are no component units included as part of this report.

The Miami Valley Risk Management Association, Inc. (MVRMA) is a risk sharing insurance pool established for the purpose of enabling the subscribing political subdivisions to obtain liability insurance and providing a formalized, jointly administered self-insurance fund for its members. The members formed a not-for-profit corporation known as Miami Valley Risk Management Association, Inc. for the purpose of administering the pool. The subscribing members of the self-insurance pool include the Cities of Beavercreek, Bellbrook, Blue Ash, Centerville, Englewood, Kettering, Madeira, Mason, Miamisburg, Montgomery, Piqua, Sidney, Springdale, Tipp City, Troy, Vandalia, West Carrollton, Wilmington, Wyoming, and the Village of Indian Hill. The City has no explicit and measurable equity interest in MVRMA and no ongoing financial responsibility for MVRMA.

The City entered into an agreement to be the fiscal agent of the Wyoming Recreation Foundation. The City's Finance Director will serve as the Treasurer of the Foundation.

Note 2 – Summary of Significant Accounting Policies

The financial statements of the City have been prepared in conformity with generally accepted accounting principles (GAAP) as applicable to governmental and proprietary funds. The Governmental Accounting Standards Board (GASB) is the accepted standard-setting body for establishing governmental accounting and financial reporting principles. The more significant of the City's accounting policies are described below.

City of Wyoming, Ohio
Notes to the Basic Financial Statements
For The Fiscal Year Ended December 31, 2017

Measurement Focus

Government-wide Financial Statements

The government-wide financial statements are prepared using the economic resources measurement focus. All assets and all liabilities associated with the operation of the City are included on the Statement of Net Position.

Fund Financial Statements

All governmental funds are accounted for using a flow of current financial resources measurement focus. With this measurement focus, only current assets and current liabilities generally are included on the balance sheet. The statement of revenues, expenditures and changes in fund balances reports on the sources (i.e., revenues and other financing sources) and uses (i.e., expenditures and other financing uses) of current financial resources. This approach differs from the manner in which the governmental activities of the government-wide financial statements are prepared. Governmental fund financial statements therefore include a reconciliation with brief explanations to better identify the relationship between the government-wide statements and the statements for governmental funds.

Like the government-wide statements, all proprietary funds are accounted for on a flow of economic resources measurement focus. All assets, liabilities and deferred inflows/outflows associated with the operation of these funds are included on the statement of net position. The statement of changes in fund net position presents increases (i.e., revenues) and decreases (i.e., expenses) in total net position. The statement of cash flows provides information about how the City finances and meets the cash flow needs of its proprietary activities.

Basis of Presentation

The City's basic financial statements consist of government-wide statements, including a statement of net position and a statement of activities, and fund financial statements which provide a more detailed level of financial information.

Government-wide Financial Statements

The statement of net position and the statement of activities display information about the City as a whole. These statements include the financial activities of the primary government, except for fiduciary funds. The statements distinguish between those activities of the City that are governmental and those that are considered business-type activities.

The statement of net position presents the financial condition of the governmental and business-type activities of the City at year-end. The statement of activities presents a comparison between direct expenses and program revenues for each program or function of the City's governmental activities and for the business-type activities of the City. Direct expenses are those that are specifically associated with a service, program or department and therefore clearly identifiable to a particular function. Program revenues include charges paid by the recipient of the goods or services offered by the program, grants and contributions that are restricted to meeting the operational or

City of Wyoming, Ohio
Notes to the Basic Financial Statements
For The Fiscal Year Ended December 31, 2017

capital requirements of a particular program and interest earned on grants that is required to be used to support a particular program. Revenues which are not classified as program revenues are presented as general revenues of the City, with certain limited exceptions. The comparison of direct expenses with program revenues identifies the extent to which each business segment or governmental function is self-financing or draws from the general revenues of the City.

Fund Financial Statements

During the year, the City segregates transactions related to certain City functions or activities in separate funds in order to aid financial management and to demonstrate legal compliance. Fund financial statements are designed to present financial information of the City at this more detailed level. The focus of governmental and enterprise fund financial statements is on major funds. Each major fund is presented in a separate column. Non-major funds are aggregated and presented in a single column. Fiduciary funds are reported by type.

Fund Accounting

The City uses funds to maintain its financial records during the year. A fund is defined as a fiscal and accounting entity with a self-balancing set of accounts. There are three categories of funds: governmental, proprietary and fiduciary.

Governmental Funds

Governmental funds are those through which most governmental functions typically are financed. Governmental fund reporting focuses on the sources, uses and balances of current financial resources. Expendable assets are assigned to the various governmental funds according to the purposes for which they may or must be used. Current liabilities are assigned to the fund from which they will be paid. The difference between governmental fund assets and deferred outflows, and liabilities and deferred inflows are reported as fund balance. The following are the City's major governmental funds:

General Fund - The general fund accounts for all financial resources except those required to be accounted for in another fund. The general fund balance is available to the City for any purpose provided it is expended or transferred according to the charter of the City and/or the general laws of Ohio.

Capital Improvement Fund – To account for various capital projects financed by governmental funds.

Equipment Replacement Fund – Created in 1981 to fund the acquisition and replacement of equipment. Expenditures are monies expended for the purchase of major pieces of equipment.

The other governmental funds of the City account for grants and other resources that are generally restricted or committed to use for a particular purpose.

City of Wyoming, Ohio
Notes to the Basic Financial Statements
For The Fiscal Year Ended December 31, 2017

Proprietary Funds

Proprietary fund reporting focuses on changes in net position, financial position and cash flows. Proprietary funds are classified as either enterprise or internal service. The City has no internal service funds.

Enterprise Funds - Enterprise funds may be used to account for any activity for which a fee is charged to external users for goods or services. The following is the City's enterprise fund:

Waterworks – Accounts for all operations of the City's water plant. Revenues include the sale of metered water, penalties, disconnecting fees, etc. Expenses are comprised of personnel and operating costs.

Fiduciary Funds

Fiduciary fund reporting focuses on net position and changes in net position. The fiduciary fund category is split into four classifications: agency funds, pension trust funds, investment trust funds and private-purpose trust funds. The Agency Fund is custodial in nature (assets equal liabilities) and does not involve measurement of results of operations. Trust funds are used to account for assets held under a trust agreement for individuals, private organizations, or other governments and are therefore not available to support the City's own programs. The City has two Agency Funds (Sewer and Mayor's Court). The Sewer agency is to account for all revenues collected for the Metropolitan Sewer District (MSD) for provision of sewer service to the citizens of Wyoming and to record sewer service charges paid to MSD. The Mayor's Court agency is to account for funds that flow through the Mayor's Court Office.

Basis of Accounting

Basis of accounting determines when transactions are recorded in the financial records and reported on the financial statements. Government-wide financial statements are prepared using the accrual basis of accounting. Governmental funds use the modified accrual basis of accounting. Proprietary and fiduciary funds also use the accrual basis of accounting. Differences in the accrual and modified accrual basis of accounting arise in the recognition of revenue, the recording of deferred inflows and in the presentation of expenses versus expenditures.

Revenues - Exchange and Non-exchange Transactions

Revenue resulting from exchange transactions, in which each party gives and receives essentially equal value, is recorded on the accrual basis when the exchange takes place. On a modified accrual basis, revenue is recorded in the fiscal year in which the resources are measurable and become available. Available means that the resources will be collected within the current fiscal year or are expected to be collected soon enough thereafter to be used to pay liabilities of the current fiscal year. For the City, available means expected to be received within thirty days of year-end.

Nonexchange transactions, in which the City receives value without directly giving equal value in return, include income taxes, property taxes, grants, entitlements and donations. On an accrual basis, revenue from income taxes is recognized in the period in which the income is earned. Revenue from property taxes is recognized in the year for which the taxes are levied. Revenue from

City of Wyoming, Ohio
Notes to the Basic Financial Statements
For The Fiscal Year Ended December 31, 2017

grants, entitlements and donations is recognized in the year in which all eligibility requirements have been satisfied. Eligibility requirements include timing requirements, which specify the year when the resources are required to be used or the year when use is first permitted; matching requirements, in which the City must provide local resources to be used for a specified purpose; and expenditure requirements, in which the resources are provided to the City on a reimbursement basis. On a modified accrual basis, revenue from nonexchange transactions must also be available before it can be recognized.

Under the modified accrual basis, the following revenue sources are considered to be both measurable and available at year-end: income tax, state-levied locally shared taxes (including gasoline tax), fines and forfeitures, interest, grants and fees.

Deferred Outflows/Inflows of Resources

Deferred Outflows/Inflows of Resources - In addition to assets, the statements of financial position will sometimes report a separate section for deferred outflows of resources. Deferred outflows of resources, represents a consumption of net position that applies to a future period and will not be recognized as an outflow of resources (expense/expenditure) until then. For the City, deferred outflows of resources include a deferral on refunding and pension reported in the government-wide statement of net position and the proprietary statement of net position. A deferral on refunding results from the difference in the carrying value of refunded debt and its reacquisition price. This amount is deferred and amortized over the shorter of the life of the refunded or refunding debt. The deferred outflows of resources related to pension are explained in Note 10.

In addition to liabilities, the statements of financial position report a separate section for deferred inflows of resources. Deferred inflows of resources represent an acquisition of net position that applies to a future period and will not be recognized as an inflow of resources (revenue) until that time. For the City, deferred inflows of resources include property taxes, income taxes, grants and other taxes, investment earnings, accounts, loans and pension. Property taxes represent amounts for which there is an enforceable legal claim as of December 31, 2017, but which were levied to finance year 2018 operations. These amounts have been recorded as deferred inflows on both the government-wide statement of net position and the governmental fund financial statements. Income taxes, grants and other taxes, investment earnings, accounts and loans are reported only on the governmental funds balance sheet, and represents receivables which will not be collected within the available period. These amounts are deferred and recognized as inflows of resources in the period the amounts become available. Deferred inflows of resources related to pension are reported on the government-wide statement of net position. For more pension related information, see Note 10.

Expenses/Expenditures

On the accrual basis of accounting, expenses are recognized at the time they are incurred.

The measurement focus of governmental fund accounting is on decreases in net financial resources (expenditures) rather than expenses. Expenditures are generally recognized in the accounting period in which the related fund liability is incurred, if measurable. Allocations of cost, such as depreciation and amortization, are not recognized in governmental funds.

City of Wyoming, Ohio
Notes to the Basic Financial Statements
For The Fiscal Year Ended December 31, 2017

Equity in Pooled Cash and Investments

To improve cash management the City's cash and investments are pooled. Monies for all funds, except cash and investments held in segregated accounts, are maintained in this pool. Individual fund integrity is maintained through City records. Each fund's interest in the pool is presented as "Equity in Pooled Cash and Investments" on the financial statements.

Investments are reported at fair value which is based on quoted market prices, with the exception of nonparticipating repurchase agreements, which are reported at cost. For investments in open-end mutual funds, fair value is determined by the fund's share price.

During 2017, the City invested in certificates of deposit, federal agency securities, a money market fund, and STAR Ohio. Investments are reported at cost, except for the money market fund and STAR Ohio. The City's money market fund investment is recorded at the amount reported by financial institutions on December 31, 2017.

STAR Ohio (the State Treasury Asset Reserve of Ohio), is an investment pool managed by the State Treasurer's Office which allows governments within the State to pool their funds for investment purposes. STAR Ohio is not registered with the SEC as an investment company, but has adopted Governmental Accounting Standards Board (GASB), Statement No. 79, "Certain External Investment Pools and Pool Participants." The City also implemented GASB Statement No. 79 for 2016. The implementation of this GASB pronouncement had no effect on beginning net position/fund balance. The City measures their investment in STAR Ohio at the net asset value (NAV) per share provided by STAR Ohio. The NAV per share is calculated on an amortized cost basis that provides an NAV per share that approximates fair value.

For 2017, there were no limitations or restrictions on any participant withdrawals due to redemption notice periods, liquidity fees, or redemption gates. However, notice must be given 24 hours in advance of all deposits and withdrawals exceeding \$25 million. STAR Ohio reserves the right to limit the transaction to \$50 million, requiring the excess amount to be transacted the following business day(s), but only to the \$50 million limit. All accounts of the participant will be combined for these purposes.

For purposes of the statement of cash flows the enterprise fund's portion of pooled cash and investments is considered a cash equivalent because enterprise funds can access their balance of the investment pool at any time without any prior notice or penalty.

Following the Ohio Revised Code, the City has, by resolution, specified the funds to receive an allocation of interest earnings. Interest revenues during 2017 amounted to \$29,688 in the General Fund, \$2,132 in Other Governmental Funds, and \$11,116 in the Waterworks Fund.

Inventory

On government-wide financial statements, inventories are presented at cost on the fair market value basis and are expensed when used.

On fund financial statements, inventories of all funds are stated at market value. For all funds, cost is determined on a market value basis. Inventory in governmental funds consists of expendable supplies held for consumption. The cost of inventory items is recorded as an expenditure in the governmental fund types when purchased. Inventories of the proprietary funds are expensed when used.

City of Wyoming, Ohio
Notes to the Basic Financial Statements
For The Fiscal Year Ended December 31, 2017

Capital Assets

General capital assets are those assets not specifically related to activities reported in the proprietary funds. These assets generally result from expenditures in the governmental funds. These assets are reported in the governmental activities column of the government-wide statement of net position but are not reported in the fund financial statements. Capital assets utilized by the proprietary funds are reported both in the business-type activities column of the government-wide statement of net position and in the respective proprietary funds.

All capital assets are capitalized at cost (or estimated historical cost) and updated for additions and retirements during the year. The City's capitalization threshold is \$5,000. Donated capital assets, donated works of art and similar items, and capital assets received in a service concession arrangement are reported at acquisition value rather than fair value. The City's infrastructure consists of bridges, culverts, curbs, sidewalks, storm sewers, streets, and water and sewer lines. Improvements are capitalized; the costs of normal maintenance and repairs that do not add to the value of the asset or materially extend an asset's life are not.

All reported capital assets are depreciated except for land (includes permanent easements) and construction in progress. Improvements are depreciated over the remaining useful lives of the related capital assets. Useful lives for infrastructure were estimated based on the City's historical records of necessary improvements and replacement. Depreciation is computed using the straight-line method over the following useful lives:

<u>Description</u>	<u>Estimated Lives</u>
Buildings and Improvements	25-50 years
Equipment	5-20 years
Infrastructure	40-60 years

Compensated Absences

The City reports compensated absences in accordance with the provisions of GASB No. 16, "Accounting for Compensated Absences." Vacation benefits are accrued as a liability as the benefits are earned if the employees' rights to receive compensation are attributable to services already rendered and it is probable that the employer will compensate the employees for the benefits through paid time off or some other means.

Sick leave benefits are accrued as a liability using the vesting method. The entire compensated absence liability is reported on the government-wide financial statements.

For governmental funds, the current portion of unpaid compensated absences is the amount that is due and payable. These amounts are recorded in the account "compensated absences payable" in the fund from which the employees who have accumulated leave are paid. The noncurrent portion of the liability is not reported. Compensated absences are reported in governmental funds only if they have matured. In proprietary funds, the entire amount of compensated absences is reported as a fund liability.

Accrued Liabilities and Long-Term Obligations

All payables, accrued liabilities and long-term obligations are reported in the government-wide financial statements, and all payables, accrued liabilities and long-term obligations payable from proprietary funds are reported on the proprietary fund financial statements.

In general, governmental fund payables and accrued liabilities that, once incurred, are paid in a timely manner and in full from current financial resources are reported as obligations of the funds. However, claims and judgments, and compensated absences that will be paid from governmental funds are reported as a liability in the fund financial statements only to the extent that they are due for payment during the current year. Bonds, capital leases and long-term loans are recognized as a liability on the fund financial statements when due.

Pension

For purposes of measuring the net pension liability, deferred outflows of resources and deferred inflows of resources related to pensions, and pension expense, information about the fiduciary net position of the pension plans and additions to/deductions from their fiduciary net position have been determined on the same basis as they are reported by the pension systems. For this purpose, benefit payments (including refunds of employee contributions) are recognized when due and payable in accordance with the benefit terms. The pension systems report investments at fair value.

Fund Balance

In accordance with Governmental Accounting Standards Board Statement No. 54, *Fund Balance Reporting and Governmental Fund Type Definitions*, the City classifies its fund balance based on the purpose for which the resources were received and the level of constraint placed on the resources. The following categories are used:

Nonspendable – resources that are not in spendable form (inventory) or have legal or contractual requirements to maintain the balance intact.

Restricted – spendable resources that have external purpose restraints imposed on them by providers, such as creditors, grantors, or other regulators.

Committed – spendable resources that are constrained for specific purposes that are internally imposed by the government at its highest level of decision making authority, City Council. This is done by ordinance by City Council.

Assigned – resources that are intended to be used for specific purposes as approved through the City's formal purchasing procedure by the Finance Director.

Unassigned – residual fund balance within the General Fund that is not restricted, committed, or assigned. In other governmental funds, the unassigned classification is used only to report a deficit balance resulting from incurred expenditures for specific purposes exceeding amounts which had been restricted, committed or assigned for said purposes.

City of Wyoming, Ohio
Notes to the Basic Financial Statements
For The Fiscal Year Ended December 31, 2017

The City applies restricted resources first when an expenditure is incurred for purposes which both restricted and unassigned fund balances are available. The City considers committed, assigned, and unassigned fund balances, respectively, to be spent when expenditures are incurred for purposes for which any of the unassigned fund balance classifications could be used.

Net Position

Net position represents the difference between assets and deferred outflows and liabilities and deferred inflows. Net investment in capital assets consists of capital assets, net of accumulated depreciation, reduced by the outstanding balances of any borrowing used for the acquisition, construction or improvement of those assets. Net position is reported as restricted when there are limitations imposed on its use either through the enabling legislation adopted by the City or through external restrictions imposed by creditors, grantors or laws or regulations of other governments. Net position restricted for Other Purposes includes mandatory fines for various court programs.

The City applies restricted resources when an expense is incurred for purposes for which both restricted and unrestricted net position are available. Of the City's \$1,385,826 in restricted net position, none was restricted by enabling legislation.

Operating Revenues and Expenses

The City, in its proprietary fund, distinguishes operating revenues and expenses from nonoperating items. Operating revenues and expenses generally result from providing services and delivering goods in connection with a proprietary fund's principal ongoing operations. The principal operating revenues of the City's enterprise fund are charges to customers for sales and services. Operating expenses for the enterprise fund includes the cost of sales and services, administrative expenses, and depreciation on capital assets. All revenues and expenses not meeting this definition are reported as nonoperating revenues and expenses.

Interfund Activity

Transfers between governmental and business-type activities on the government-wide statements are reported in the same manner as general revenues.

Exchange transactions between funds are reported as revenues in the seller funds and as expenditures/expenses in the purchaser funds. Flows of cash or goods from one fund to another without a requirement for repayment are reported as interfund transfers. Interfund transfers are reported as other financing sources/uses in governmental funds and after nonoperating revenues/expenses in proprietary funds. Repayments from funds responsible for particular expenditures/expenses to the funds that initially paid for them are not presented on the financial statements.

As a general rule, the effect of interfund (internal) activity has been eliminated from the government-wide statement of activities. The interfund services provided and used are not eliminated through the process of consolidation.

City of Wyoming, Ohio
Notes to the Basic Financial Statements
For The Fiscal Year Ended December 31, 2017

Self-Insurance

The City provides health insurance benefits through a self-insured program. This program is accounted for in the General Fund. The liability for unpaid claims includes estimates of costs related to incurred but not reported (IBNR) claims if it is probable that an IBNR liability has been incurred at year-end and the IBNR amount can be reasonably estimated.

Estimates

The preparation of the financial statements in conformity with generally accepted accounting principles requires management to make estimates and assumptions that affect the amounts reported in the financial statements and accompanying notes. Actual results may differ from those estimates.

Gain/Loss on Refunding

On the government-wide financial statements, the difference between the reacquisition price (funds required to refund the old debt) and the net carrying amount of the old debt (the gain/loss on refunding) is being amortized as a component of interest expense. This deferred amount is amortized over the life of the old debt or the life of the new debt, whichever is shorter, using the effective interest method.

Note 3 – Equity in Pooled Cash and Investments

Cash resources of several individual funds are combined to form a pool of cash and investments. Each fund type's portion of this pool is displayed on the combined balance sheet as "Equity in Pooled Cash and Investments."

State statute requires the classification of monies held by the City into three categories:

Active Monies - Those monies required to be kept in a "cash" or "near cash" status for immediate use by the City. Such monies must by law be maintained either as cash in the City treasury, in depository accounts payable or withdrawable on demand.

Inactive Monies – Those monies not required for use within the current two year period of designated depositories. Ohio law permits inactive monies to be deposited or invested as certificates of deposit maturing not later than the end of the current period of designated depositories, or as savings or deposit accounts, including, but not limited to passbook accounts.

Interim Monies – Those monies which are not needed for immediate use but which will be needed before the end of the current period of designation of depositories. Ohio law permits interim monies to be invested or deposited in the following securities:

- (1) Bonds, notes, or other obligations of or guaranteed by the United States, or those for which the faith of the United States is pledged for the payment of principal and interest.
- (2) Bonds, notes, debentures, or other obligations or securities issued by any federal governmental agency.

City of Wyoming, Ohio
Notes to the Basic Financial Statements
For The Fiscal Year Ended December 31, 2017

- (3) No-load money market mutual funds consisting exclusively of obligations described in (1) or (2) above and repurchase agreements secured by such obligations, provided that investments in securities described in this division are made only through eligible institutions.
- (4) Interim deposits in the eligible institutions applying for interim monies to be evidenced by time certificates of deposit maturing not more than one year from date of deposit, or by savings or deposit accounts, including, but limited to, passbook accounts.
- (5) Bonds and other obligations of the State of Ohio.
- (6) The Ohio State Treasurer's investment pool (STAR Ohio).
- (7) Commercial paper and banker's acceptances which meet the requirements established by Ohio Revised Code, Sec. 135.142.
- (8) Under limited circumstances, corporate debt interests in either of the two highest rating classifications by at least two nationally recognized rating agencies.

Protection of the City's deposits is provided by the Federal Deposit Insurance Corporation, by eligible securities pledged by the financial institution as security for repayment, by surety company bonds deposited with the treasurer by the financial institution or by a single collateral pool established by the financial institution to secure the repayment of all public moneys deposited with the institution.

Investments in stripped principal or interest obligations, reverse repurchase agreements and derivatives are prohibited. The issuance of taxable notes for the purpose of arbitrage, the use of leverage and short selling are also prohibited. An investment must mature within five years from the date of purchase unless matched to a specific obligation or debt of the City, and must be purchased with the expectation that it will be held to maturity. Investments may only be made through specified dealers and institutions. Payment for investments may be made only upon delivery of the securities representing the investments to the treasurer or, if the securities are not represented by a certificate, upon receipt of confirmation of transfer from the custodian.

Deposits

Custodial credit risk is the risk that in the event of a bank failure, the City's deposits may not be returned to it. The City's policy for deposits is any balance not covered by depository insurance will be collateralized by the financial institutions with pledged securities. As of December 31, 2017, \$1,911,737 of the City's bank balance of \$2,161,737 was exposed to custodial risk because it was uninsured and collateralized with securities held by the pledging financial institution's trust department or agent, but not in the City's name.

Ohio Revised Code Chapter 135, Uniform Depository Act, authorizes pledging of pooled securities in lieu of specific securities. Specifically, a designated public depository may pledge a single pool of eligible securities to secure repayment of all public monies deposited in the financial institution, provided that

City of Wyoming, Ohio
Notes to the Basic Financial Statements
For The Fiscal Year Ended December 31, 2017

all times the total value of the securities so pledged is at least equal to 105% of the total amount of all public deposits secured by the pool, including the portion of such deposits covered by any federal deposit insurance.

Investments

As of December 31, 2017, the City had the following investments:

Investment Type	Value	Fair Value Hierarchy	Weighted Average Maturity (Years)
Certificates of Deposit	\$4,634,666	Level 2	1.73
Federal National Mortgage Association	224,633	Level 2	0.33
STAR Ohio	6,088	N/A	0.14
Money Market Funds	30,169	N/A	0.00
Total Fair Value	\$4,895,556		
Portfolio Weighted Average Maturity			1.65

The City categorizes its fair value measurements with the fair value hierarchy established by generally accepted accounting principles. The Hierarchy is based on the valuation inputs used to measure the fair value of the asset. Level 1 inputs are quoted prices in active markets for identical assets. Level 2 inputs are significant other observable inputs. Level 3 inputs are significant unobservable inputs. The above table identifies the City's recurring fair value measurements as of December 31, 2017. STAR Ohio is reported at its share price (Net Asset value per share).

Interest Rate Risk - In accordance with the investment policy, the City manages its exposure to declines in fair values by limiting the weighted average maturity of its investment portfolio to five years, unless matched to a specified obligation or debt of the City.

Credit Risk – It is the City's policy to limit its investments that are not obligations of the U.S. Government or obligations explicitly guaranteed by the U.S. Government to investments which have the highest credit quality rating issued by nationally recognized statistical rating organizations. The City's investments in Federal National Mortgage Association were rated AA+ by Standard and Poor's and Fitch ratings and Aaa by Moody's Investors Service. Investments in STAROhio were rated AAAM by Standard & Poors. Investments in Money Market Funds and Certificates of Deposit were not rated.

Concentration of Credit Risk – The City's investment policy allows investments in Federal Government Securities or Instrumentalities. The City has invested 94.7% in Certificates of Deposit, 4.6% in Federal National Mortgage Association and less than 1% in STAROhio and Money Market Funds.

Custodial Credit Risk is the risk that in the event of the failure of the counterparty, the City will not be able to recover the value of its investments or collateral securities that are in the possession of an outside party. All of the City's securities are either insured and registered in the name of the City or at least registered in the name of the City.

City of Wyoming, Ohio
Notes to the Basic Financial Statements
For The Fiscal Year Ended December 31, 2017

Note 4 – Receivables

Receivables at year end, consisted primarily of municipal income taxes, property and other taxes, intergovernmental receivables arising from entitlements, shared revenues, accrued interest on investments, interfund, loans and accounts receivable.

No allowances for doubtful accounts have been recorded because uncollectible amounts are expected to be insignificant.

Property Taxes

Property taxes include amounts levied against all real, public utility, and tangible personal property located in the City. Property tax revenue received during 2017 for real and public utility property taxes represents collections of the 2016 taxes.

2017 real property taxes are levied after October 1, 2017, on the assessed value as of January 1, 2017, the lien date. Assessed values are established by State law at 35 percent of appraised market value. 2017 real property taxes are collected in and intended to finance 2018 operations.

Public utility personal property currently is assessed at varying percentages of true value; public utility real property is assessed at 35 percent of true value. 2017 public utility property taxes became a lien December 31, 2016, are levied after October 1, 2017, and are collected in 2018 with real property taxes.

The assessed values of real and public utility personal property upon which current year property tax receipts were based are as follows:

	<u>Amount</u>
Real Property	\$308,496,840
Public Utility	<u>4,820,860</u>
Total	<u><u>\$313,317,700</u></u>

Real property taxes are payable annually or semi-annually. The first payment is due January 20 with the remainder payable by June 20.

The County Treasurer collects property taxes on behalf of all taxing districts in the county, including the City. The County Auditor periodically remits to the City its portion of the taxes collected. Accrued property taxes receivable represent real property taxes, public utility taxes and outstanding delinquencies which are measurable as of yearend for which there is an enforceable legal claim. Although total property tax collections for the next year are measurable, amounts to be received during the available period are not subject to reasonable estimation at year end, nor were they levied to finance current year operations. The receivable is therefore offset by deferred inflow.

Income Taxes

The City levies a tax of 1.0% on all salaries, wages, commissions and other compensation and on net profits earned within the City as well as on incomes of residents earned outside the City.

City of Wyoming, Ohio
Notes to the Basic Financial Statements
For The Fiscal Year Ended December 31, 2017

Employers within the City withhold income tax on employee compensation and remit at least quarterly. Corporations and other individual taxpayers pay estimated taxes quarterly and file an annual declaration.

Note 5 - Risk Management

The City is one of twenty members of a joint insurance pool, Miami Valley Risk Management Association, Inc. (MVRMA), with the cities of Englewood, Bellbrook and Centerville added in 2004. The pool has been operational since December 1, 1988, and was formed according to Section 2744.081 of the Ohio Revised Code. This joint venture covers all property, crime, liability, boiler and machinery, and public official liability up to the limits stated below. It is intended to provide broad-based coverage up to the various limits with increased emphasis on safety and loss prevention.

MVRMA is a corporation governed by a twenty member board of trustees, consisting of a representative appointed by each of the member cities. The board of trustees elects the officers of the corporation, with each trustee having a single vote. The board is responsible for its own financial matters and the corporation maintains its own book of accounts. Budget and financing of MVRMA is subject to the approval of the board.

Excess insurance coverage will cover additional claims up to the limits listed below:

Liability:

- Personal Injury Liability
- Property Damage Liability
- Public Officials Errors and Omissions
- Employment Practices Liability
- Employee Benefits Liability

Limits: \$12,000,000 per occurrence. \$12,000,000 annual aggregate per member for Employment Practices Liability; Public Officials Errors and Omissions and Employee benefits Liability combined; and Products/Completed Operations.

MVRMA self-insured \$500,000 per occurrence and obtained reinsurance from Government Entities Mutual Inc. (GEM) for \$4.5 million excess of \$500,000, and from Genesis for \$7 million excess of \$5 million.

Property:

- \$1,000,000,000/occurrence
- MVRMA Self-Insured Retention (SIR): \$250,000/occurrence

Coverage excess of SIR provided by Alliant Property Insurance Program (APIP). List of carriers underwriting the coverage provided upon request.

This Space Intentionally Left Blank

City of Wyoming, Ohio
Notes to the Basic Financial Statements
For The Fiscal Year Ended December 31, 2017

Flood – included in Property Policy

\$25 million/occurrence and annual aggregate

Sublimit: Flood zone A & V - \$5 million/occurrence and annual aggregate

MVRMA SIR: \$100,000/occurrence excluding Flood Zones A & V

MVRMA SIR: \$250,000/occurrence Flood Zones A & V

Earthquake – included in Property Policy

\$25 million/occurrence and annual aggregate

MVRMA SIR: \$100,000/occurrence

Boiler & Machinery – included in Property Policy

\$100,000,000/occurrence

MVRMA SIR: \$10,000-\$350,000/occurrence

Cyber Liability – included in Property Policy

MVRMA SIR: \$100,000/occurrence

Coverage excess of SIR provided by Lloyd’s of London – Beazley Syndicate

Third Party Liability:

\$2 million/occurrence and annual aggregate, but sublimited to:

\$1,000,000/occurrence and annual aggregate for Privacy Notification Costs

First Party Computer Liability

\$2 million/occurrence and annual aggregate subject to policy sublimits

Pollution Liability – Claims made and Reported Policy

Retroactive Date: Policy inception

Coverage excess SIR provided by Illinois Union Insurance Co.

\$1 million/pollution condition and aggregate with a \$200,000 sublimit for Fungi & Legionella

MVRMA SIR: \$75,000/pollution condition;

\$750,000 underground storage tanks specific

Member Deductible/occurrence - \$2,500

The Financial Audit for 2017 has not been completed. Figures from the audited 2016 financial Audit are as follows:

Current Assets	\$1,583,593
Total Assets	\$18,767,708
Current Liabilities	\$5,317,138
Long-Term Liabilities	\$2,369,558
Net Position	\$11,194,331

Settled claims have not exceeded this commercial coverage in any of the past three years.

City of Wyoming, Ohio
Notes to the Basic Financial Statements
For The Fiscal Year Ended December 31, 2017

Self-Insurance

The City has a self-insured group health insurance program for employees and their eligible dependents. This program is accounted for in the General Fund. The claims liability of \$27,533 reported in the fund at year end based on the requirements of GASB Statement No. 10, which requires that a liability for claims be reported if information prior to the issuance of the financial statements indicates that it is probable that a liability has been incurred at the date of the financial statements and the amount of the loss can be reasonably estimated. Changes in the fund's claims liability amounts were as follows:

<u>Fiscal Year</u>	<u>Beginning of Fiscal Year Liability</u>	<u>Current Claims & Changes in Estimates</u>	<u>Claims Payments</u>	<u>Balance at Fiscal Year End</u>
2017	\$11,429	\$540,052	(\$523,948)	\$27,533
2016	26,113	485,268	(499,952)	11,429

All claims are due and payable as of year end.

Note 6 – Capital Assets

Capital asset activity for the current year end was as follows:

	<u>Beginning Balance</u>	<u>Additions</u>	<u>Deletions</u>	<u>Ending Balance</u>
Governmental Activities				
<i>Capital Assets, not being depreciated:</i>				
Land	\$9,099,508	\$11,250	\$0	\$9,110,758
Construction in Progress	1,131,672	1,765,756	1,895,534	1,001,894
Easements	474,448	0	0	474,448
<i>Capital Assets, being depreciated:</i>				
Buildings and Improvements	12,108,286	1,417,198	0	13,525,484
Equipment	5,048,939	146,384	275,841	4,919,482
Infrastructure	<u>15,191,277</u>	<u>756,503</u>	<u>0</u>	<u>15,947,780</u>
Totals at Historical Cost	<u>43,054,130</u>	<u>4,097,091</u>	<u>2,171,375</u>	<u>44,979,846</u>
Less Accumulated Depreciation:				
Buildings and Improvements	4,680,597	387,600	0	5,068,197
Equipment	3,001,155	318,709	275,841	3,044,023
Infrastructure	<u>4,117,441</u>	<u>331,411</u>	<u>0</u>	<u>4,448,852</u>
Total Accumulated Depreciation	<u>\$11,799,193</u>	<u>\$1,037,720</u>	<u>\$275,841</u>	<u>\$12,561,072</u>
Governmental Activities Capital Assets, Net	<u>\$31,254,937</u>	<u>\$3,059,371</u>	<u>\$1,895,534</u>	<u>\$32,418,774</u>

City of Wyoming, Ohio
Notes to the Basic Financial Statements
For The Fiscal Year Ended December 31, 2017

	<u>Beginning Balance</u>	<u>Additions</u>	<u>Deletions</u>	<u>Ending Balance</u>
Business-Type Activities				
<i>Capital Assets, not being depreciated:</i>				
Land	\$52,172	\$0	\$0	\$52,172
Easements	314,158	0	0	314,158
<i>Capital Assets, being depreciated:</i>				
Buildings and Improvements	7,624,270	0	0	7,624,270
Equipment	716,582	14,688	0	731,270
Infrastructure	4,593,212	0	0	4,593,212
Totals at Historical Cost	<u>13,300,394</u>	<u>14,688</u>	<u>0</u>	<u>13,315,082</u>
Less Accumulated Depreciation:				
Buildings and Improvements	3,084,405	151,096	0	3,235,501
Equipment	382,848	36,684	0	419,532
Infrastructure	2,056,091	72,255	0	2,128,346
Total Accumulated Depreciation	<u>\$5,523,344</u>	<u>\$260,035</u>	<u>\$0</u>	<u>\$5,783,379</u>
Business-Type Activities Capital Assets, Net	<u>\$7,777,050</u>	<u>(\$245,347)</u>	<u>\$0</u>	<u>\$7,531,703</u>

Depreciation expense was charged to governmental functions as follows:

General Government	\$114,928
Public Safety	236,494
Leisure Time	205,844
Community Development	159,032
Transportation and Street Repair	321,422
Total Depreciation Expense	<u>\$1,037,720</u>

Note 7 – Compensated Absences

In accordance with GASB Statement 16, the City accrues certain portions of unpaid sick leave and vacation pay as payment becomes probable. Each full-time, permanent employee is credited with 10 hours of sick leave per calendar month of service, to a maximum of 120 hours per year. Sick leave credit may be accumulated to a maximum of 2,500 hours for police department employees and 2,225 hours for all other employees. Upon retirement, employees are paid for a maximum of two-thirds of unused accumulated sick leave, provided however, that no more than 1,072 hours may be paid regardless of the accumulated amount.

All full-time employees earn vacation at varying rates based upon length of service. An employee's vacation must be used during the period in which it is earned unless the City Manager allows the balance to be carried over to the following year. Upon separation from the City, the employee (or his/her estate) is paid for his/her accumulated unused vacation leave balance. As of December 31, 2017, the liability for unpaid compensated absences was \$705,221. \$66,507 is reported in the Enterprise fund.

City of Wyoming, Ohio
Notes to the Basic Financial Statements
For The Fiscal Year Ended December 31, 2017

Note 8 – Long-Term Debt

A schedule of changes in bonds and other long-term obligations of the City during the current year follows:

	Issue Date	Maturity Date	Interest Rate	Beginning Balance	Additions	Deletions	Ending Balance	Due Within One Year
Governmental Activities								
General Obligation Bonds								
2006 Various Purpose Bonds	12/1/06	12/1/26	4.00% - 5.00%	\$3,030,000	\$0	(\$3,030,000)	\$0	\$0
2009 Various Purpose Bonds	12/1/09	12/1/29	4.02%	3,606,690	0	(3,146,152)	460,538	227,769
OPWC Chisholm Improvements	2/13/09	1/1/21	0.00%	177,806	0	(44,442)	133,364	44,442
2012 Refunding Bonds - Property Acquisition	4/17/12	12/1/23	2.00% - 4.00%	685,000	0	(90,000)	595,000	90,000
2012 Refunding Bonds - Wyoming Business District	4/17/12	12/1/18	2.00% - 3.00%	140,000	0	(70,000)	70,000	70,000
2012 Refunding Bonds - Various Purpose Bonds	4/17/12	12/1/24	2.00% - 4.00%	852,309	0	(94,500)	757,809	96,600
OPWC Hilltop Improvements	12/1/12	7/1/33	0.02%	245,890	0	(30,260)	215,630	12,646
OPWC Wilmuth Avenue Rehabilitation	12/1/16	1/1/46	0.00%	118,931	0	(4,101)	114,830	4,101
OPWC Worthington Avenue Rehabilitation	12/1/16	1/1/46	0.00%	148,675	0	(5,127)	143,548	5,127
OPWC Springfield Pike	1/1/15	1/1/46	0.00%	266,695	103,750	0	370,445	0
2012 Refunding Bonds - Premium	n/a	n/a	n/a	89,497	0	(15,259)	74,238	0
2017 Refunding Bonds				0	5,785,211	(249,038)	5,536,173	263,996
2017 Refunding Bonds - Premium				0	563,062	(1,715)	561,347	0
Total General Obligation Bonds and Notes				9,361,493	6,452,023	(6,780,594)	9,032,922	814,681
Net Pension Liability:								
OPERS				2,537,419	749,010	0	3,286,429	0
OP&F				3,828,449	0	(163,845)	3,664,604	0
Total Net Pension Liability				6,365,868	749,010	(163,845)	6,951,033	0
Police Pension Liability	4/1/81	4/1/36	4.30%	142,689	0	(5,225)	137,464	5,449
Compensated Absences			N/A	678,596	88,737	(62,112)	705,221	31,006
Total Governmental Activities				\$16,548,646	\$7,289,770	(\$7,011,776)	\$16,826,640	\$851,136

	Issue Date	Maturity Date	Interest Rate	Beginning Balance	Additions	Deletions	Ending Balance	Due Within One Year
Business-Type Activities								
General Obligation Bonds and Notes								
OPWC Van Roberts Place	8/6/99	1/1/20	3.00%	\$19,532	\$0	(\$6,318)	\$13,214	\$6,509
OPWC - Waterplant	2/12/01	7/1/21	3.00%	1,459,551	0	(307,657)	1,151,894	316,956
OPWC Hilltop Improvements	12/1/12	7/1/33	0.02%	132,402	0	(11,867)	120,535	6,996
2009 Various Purpose Bonds	12/1/09	12/1/29	4.02%	878,310	0	(763,848)	114,462	57,231
2012 Various Purpose Bonds	4/17/12	12/1/24	2.00% - 4.00%	1,172,691	0	(130,500)	1,042,191	133,400
2012 Refunding Bonds - Premium	n/a	n/a	n/a	57,934	0	(7,724)	50,210	0
2017 Refunding Bonds				0	719,790	(963)	718,827	1,004
Total General Obligation Bonds and Notes				3,720,420	719,790	(1,228,877)	3,211,333	522,096
Net Pension Liability - OPERS:								
Waterworks				345,878	97,305	0	443,183	0
Total Net Pension Liability				345,878	97,305	0	443,183	0
Compensated Absences				60,947	8,277	(2,717)	66,507	2,852
Total Business-Type Activities				\$4,127,245	\$825,372	(\$1,231,594)	\$3,721,023	\$524,948

The City's bonds and notes will be paid from the Property Acquisition Note Retirement Fund, Capital Improvement Fund and Waterworks Fund. The Police Pension Liability will be paid from the General Fund. Compensated Absences will be paid from the fund from which the person is paid. Historically, this is the General Fund or a Special Revenue Fund.

Principal and interest requirements to retire the City's general obligation debt and notes outstanding at year end are as follows:

City of Wyoming, Ohio
Notes to the Basic Financial Statements
For The Fiscal Year Ended December 31, 2017

Year Ending December 31	Principal	Interest	Total
2018	\$1,336,777	\$503,857	\$1,840,634
2019	1,320,423	464,319	1,784,742
2020	1,348,933	274,752	1,623,685
2021	1,165,351	233,073	1,398,424
2022	1,028,671	198,128	1,226,799
2023-2027	3,983,244	499,111	4,482,355
2028-2032	1,066,000	45,525	1,111,525
2033-2037	116,035	21,514	137,549
2038-2042	112,255	0	112,255
2043-2046	80,771	0	80,771
Total	<u>\$11,558,460</u>	<u>\$2,240,279</u>	<u>\$13,798,739</u>

Principal and interest requirements to retire the City's Police Pension Liability outstanding at year end are as follows:

Year Ending December 31	Principal	Interest	Total
2018	\$5,391	\$5,785	\$11,176
2019	5,683	5,551	11,234
2020	5,927	5,307	11,234
2021	6,182	5,052	11,234
2022	6,447	4,787	11,234
2023-2027	36,634	19,534	56,168
2028-2032	45,218	10,960	56,178
2033-2035	25,926	1,655	27,581
Total	<u>\$137,408</u>	<u>\$58,631</u>	<u>\$196,039</u>

Note 9 - Prior Year Defeasance of Debt

In prior years, the City defeased certain general obligation bonds by placing the proceeds of the new bonds in an irrevocable trust to provide for all future debt service payments on the old bonds. Accordingly, the trust account assets and the liability for the defeased bonds are not included on the City's financial statements. As of December 31, 2017, none of the bonds outstanding are considered defeased.

This Space Intentionally Left Blank

Note 10 - Defined Benefit Pension Plans

Net Pension Liability

The net pension liability reported on the statement of net position represents a liability to employees for pensions. Pensions are a component of exchange transactions—between an employer and its employees—of salaries and benefits for employee services. Pensions are provided to an employee—on a deferred-payment basis—as part of the total compensation package offered by an employer for employee services each financial period. The obligation to sacrifice resources for pensions is a present obligation because it was created as a result of employment exchanges that already have occurred.

The net pension liability represents the City’s proportionate share of each pension plan’s collective actuarial present value of projected benefit payments attributable to past periods of service, net of each pension plan’s fiduciary net position. The net pension liability calculation is dependent on critical long-term variables, including estimated average life expectancies, earnings on investments, cost of living adjustments and others. While these estimates use the best information available, unknowable future events require adjusting this estimate annually.

Ohio Revised Code limits the City’s obligation for this liability to annually required payments. The City cannot control benefit terms or the manner in which pensions are financed; however, City does receive the benefit of employees’ services in exchange for compensation including pension.

GASB 68 assumes the liability is solely the obligation of the employer, because (1) they benefit from employee services; and (2) State statute requires all funding to come from these employers. All contributions to date have come solely from these employers (which also includes costs paid in the form of withholdings from employees). State statute requires the pension plans to amortize unfunded liabilities within 30 years. If the amortization period exceeds 30 years, each pension plan’s board must propose corrective action to the State legislature. Any resulting legislative change to benefits or funding could significantly affect the net pension liability. Resulting adjustments to the net pension liability would be effective when the changes are legally enforceable.

The proportionate share of each plan’s unfunded benefits is presented as a long-term *net pension liability* on the accrual basis of accounting. Any liability for the contractually-required pension contribution outstanding at the end of the year is included in *Intergovernmental Payable* on both the accrual and modified accrual bases of accounting.

Ohio Public Employees Retirement System (OPERS)

Plan Description – The City’s employees participate in the Ohio Public Employees Retirement System (OPERS). OPERS administers three separate pension plans. The traditional pension plan is a cost-sharing, multiple-employer defined benefit pension plan. The member-directed plan is a defined contribution plan and the combined plan is a cost-sharing, multiple-employer defined benefit pension plan with defined contribution features. While members (e.g. City employees) may elect the member-directed plan and the combined plan, substantially all employee members are in OPERS’ traditional plan; therefore, the following disclosure focuses on the traditional pension plan.

City of Wyoming, Ohio
Notes to the Basic Financial Statements
For The Fiscal Year Ended December 31, 2017

OPERS provides retirement, disability, survivor and death benefits, and annual cost of living adjustments to members of the traditional plan. Authority to establish and amend benefits is provided by Chapter 145 of the Ohio Revised Code. OPERS issues a stand-alone financial report that includes financial statements, required supplementary information and detailed information about OPERS' fiduciary net position that may be obtained by visiting <https://www.opers.org/financial/reports.shtml>, by writing to the Ohio Public Employees Retirement System, 277 East Town Street, Columbus, Ohio 43215-4642, or by calling 800-222-7377.

Senate Bill (SB) 343 was enacted into law with an effective date of January 7, 2013. In the legislation, members were categorized into three groups with varying provisions of the law applicable to each group. The following table provides age and service requirements for retirement and the retirement formula applied to final average salary (FAS) for the three member groups under the traditional plan as per the reduced benefits adopted by SB 343 (see OPERS CAFR referenced above for additional information, including requirements for reduced and unreduced benefits):

Group A	Group B	Group C
Eligible to retire prior to January 7, 2013 or five years after January 7, 2013	20 years of service credit prior to January 7, 2013 or eligible to retire ten years after January 7, 2013	Members not in other Groups and members hired on or after January 7, 2013
State and Local	State and Local	State and Local
Age and Service Requirements: Age 60 with 60 months of service credit or Age 55 with 25 years of service credit	Age and Service Requirements: Age 60 with 60 months of service credit or Age 55 with 25 years of service credit	Age and Service Requirements: Age 57 with 25 years of service credit or Age 62 with 5 years of service credit
Formula: 2.2% of FAS multiplied by years of service for the first 30 years and 2.5% for service years in excess of 30	Formula: 2.2% of FAS multiplied by years of service for the first 30 years and 2.5% for service years in excess of 30	Formula: 2.2% of FAS multiplied by years of service for the first 35 years and 2.5% for service years in excess of 35
Public Safety	Public Safety	Public Safety
Age and Service Requirements: Age 48 with 25 years of service credit or Age 52 with 15 years of service credit	Age and Service Requirements: Age 48 with 25 years of service credit or Age 52 with 15 years of service credit	Age and Service Requirements: Age 52 with 25 years of service credit or Age 56 with 15 years of service credit
Law Enforcement	Law Enforcement	Law Enforcement
Age and Service Requirements: Age 52 with 15 years of service credit	Age and Service Requirements: Age 48 with 25 years of service credit or Age 52 with 15 years of service credit	Age and Service Requirements: Age 48 with 25 years of service credit or Age 56 with 15 years of service credit
Public Safety and Law Enforcement	Public Safety and Law Enforcement	Public Safety and Law Enforcement
Formula: 2.5% of FAS multiplied by years of service for the first 25 years and 2.1% for service years in excess of 25	Formula: 2.5% of FAS multiplied by years of service for the first 25 years and 2.1% for service years in excess of 25	Formula: 2.5% of FAS multiplied by years of service for the first 25 years and 2.1% for service years in excess of 25

Final average Salary (FAS) represents the average of the three highest years of earnings over a member's career for Groups A and B. Group C is based on the average of the five highest years of earnings over a member's career.

City of Wyoming, Ohio
Notes to the Basic Financial Statements
For The Fiscal Year Ended December 31, 2017

Members who retire before meeting the age and years of service credit requirement for unreduced benefits receive a percentage reduction in the benefit amount.

When a benefit recipient has received benefits for 12 months, an annual cost of living adjustment (COLA) is provided. This COLA is calculated on the base retirement benefit at the date of retirement and is not compounded. For those retiring prior to January 7, 2013, the COLA will continue to be a 3 percent simple annual COLA. For those retiring subsequent to January 7, 2013, beginning in calendar year 2019, the COLA will be based on the average percentage increase in the Consumer Price Index, capped at 3 percent.

Funding Policy - The Ohio Revised Code (ORC) provides statutory authority for member and employer contributions as follows:

	<u>State and Local</u>	<u>Public Safety</u>	<u>Law Enforcement</u>
2017 Statutory Maximum Contribution Rates			
Employer	14.0 %	18.1 %	18.1 %
Employee	10.0 %	*	**
2017 Actual Contribution Rates			
Employer:			
Pension	13.0 %	17.1 %	17.1 %
Post-employment Health Care Benefits	<u>1.0</u>	<u>1.0</u>	<u>1.0</u>
Total Employer	<u>14.0 %</u>	<u>18.1 %</u>	<u>18.1 %</u>
Employee	<u>10.0 %</u>	<u>12.0 %</u>	<u>13.0 %</u>

* This rate is determined by OPERS' Board and has no maximum rate established by ORC.

** This rate is also determined by OPERS' Board, but is limited by ORC to not more than 2 percent greater than the Public Safety rate.

Employer contribution rates are actuarially determined and are expressed as a percentage of covered payroll. The City is contractually required contribution was \$280,987 for 2017. Of this amount \$27,256 is reported as accrued wages and benefits.

Ohio Police & Fire Pension Fund (OPF)

Plan Description - City full-time safety officers participate in Ohio Police and Fire Pension Fund (OPF), a cost-sharing, multiple-employer defined benefit pension plan administered by OPF. OPF provides retirement and disability pension benefits, annual cost-of-living adjustments, and death benefits to plan members and beneficiaries. Benefit provisions are established by the Ohio State Legislature and are codified in Chapter 742 of the Ohio Revised Code. OPF issues a publicly available financial report that includes financial information and required supplementary information and detailed information about OPF fiduciary net position. The report that may be obtained by visiting the OPF website at www.opf.org or by writing to the Ohio Police and Fire Pension Fund, 140 East Town Street, Columbus, Ohio 43215-5164.

City of Wyoming, Ohio
Notes to the Basic Financial Statements
For The Fiscal Year Ended December 31, 2017

Upon attaining a qualifying age with sufficient years of service, a member of OPF may retire and receive a lifetime monthly pension. OPF offers four types of service retirement: normal, service commuted, age/service commuted and actuarially reduced. Each type has different eligibility guidelines and is calculated using the member's average annual salary. The following discussion of the pension formula relates to normal service retirement.

For members hired after July 1, 2013, the minimum retirement age is 52 for normal service retirement with at least 25 years of service credit. For members hired on or before after July 1, 2013, the minimum retirement age is 48 for normal service retirement with at least 25 years of service credit.

The annual pension benefit for normal service retirement is equal to a percentage of the allowable average annual salary. The percentage equals 2.5 percent for each of the first 20 years of service credit, 2.0 percent for each of the next five years of service credit and 1.5 percent for each year of service credit in excess of 25 years. The maximum pension of 72 percent of the allowable average annual salary is paid after 33 years of service credit.

Under normal service retirement, retired members who are at least 55 years old and have been receiving OPF benefits for at least one year may be eligible for a cost-of-living allowance adjustment. The age 55 provision for receiving a COLA does not apply to those who are receiving a permanent and total disability benefit and statutory survivors.

Members retiring under normal service retirement, with less than 15 years of service credit on July 1, 2013, will receive a COLA equal to either three percent or the percent increase, if any, in the consumer price index (CPI) over the 12-month period ending on September 30 of the immediately preceding year, whichever is less. The COLA amount for members with at least 15 years of service credit as of July 1, 2013 is equal to three percent of their base pension or disability benefit.

Funding Policy - The Ohio Revised Code (ORC) provides statutory authority for member and employer contributions as follows:

	<u>Safety Officers</u>
2017 Statutory Maximum Contribution Rates	
Employer	19.50 %
Employee	12.25 %
2017 Actual Contribution Rates	
Employer:	
Pension	19.00 %
Post-employment Health Care Benefits	<u>0.50</u>
Total Employer	<u>19.50 %</u>
Employee	12.25 %

The City's contractually required contribution to OPF was \$300,145 for 2017. Of this amount \$25,933 is reported as accrued wages and benefits.

City of Wyoming, Ohio
Notes to the Basic Financial Statements
For The Fiscal Year Ended December 31, 2017

Pension Liabilities, Pension Expense, and Deferred Outflows of Resources and Deferred Inflows of Resources Related to Pensions

The net pension liability for OPERS was measured as of December 31, 2016, and the total pension liability used to calculate the net pension liability was determined by an actuarial valuation as of that date. OPF's total pension liability was measured as of December 31, 2016, and was determined by rolling forward the total pension liability as of January 1, 2016, to December 31, 2016. The City proportion of the net pension liability was based on the City share of contributions to the pension plan relative to the contributions of all participating entities. Following is information related to the proportionate share and pension expense:

	<u>OPERS</u>	<u>OPF</u>	<u>Total</u>
Proportionate Share of the Net Pension Liability	\$3,729,611	\$3,664,604	\$7,394,215
Proportion of the Net Pension Liability			
Current Measurement Date	0.01642400%	0.05785700%	
Proportion of the Net Pension Liability			
Prior Measurement Date	<u>0.01664600%</u>	<u>0.05951200%</u>	
Change in Proportionate Share	-0.0002220%	-0.0016550%	
Pension Expense	\$790,963	\$435,663	\$1,226,626

At December 31, 2017, the City reported deferred outflows of resources and deferred inflows of resources related to pensions from the following sources:

	<u>OPERS</u>	<u>OPF</u>	<u>Total</u>
Deferred Outflows of Resources:			
Differences between expected and actual experience	\$5,055	\$1,037	\$6,092
Changes in assumptions	591,562	0	591,562
Net difference between projected and actual earnings on pension plan investments	555,425	356,367	911,792
Changes in employer proportionate share of net pension liability	10,586	0	10,586
Contributions subsequent to the measurement date	<u>280,987</u>	<u>300,145</u>	<u>581,132</u>
Total Deferred Outflows of Resources	<u>\$1,443,615</u>	<u>\$657,549</u>	<u>\$2,101,164</u>
Deferred Inflows of Resources:			
Differences between expected and actual experience	\$22,197	\$8,437	\$30,634
Changes in employer proportionate share of net pension liability	<u>18,769</u>	<u>108,389</u>	<u>127,158</u>
Total Deferred Inflows of Resources	<u>\$40,966</u>	<u>\$116,826</u>	<u>\$157,792</u>

City of Wyoming, Ohio
Notes to the Basic Financial Statements
For The Fiscal Year Ended December 31, 2017

\$581,132 reported as deferred outflows of resources related to pension resulting from City contributions subsequent to the measurement date will be recognized as a reduction of the net pension liability in the year ending December 31, 2018. Other amounts reported as deferred outflows of resources and deferred inflows of resources related to pension will be recognized in pension expense as follows:

Year Ending December 31:	OPERS	OPF	Total
2018	\$466,110	\$112,551	\$578,661
2019	475,163	112,551	587,714
2020	196,671	80,257	276,928
2021	(16,281)	(46,971)	(63,252)
2022	0	(16,365)	(16,365)
Thereafter	0	(1,446)	(1,446)
Total	\$1,121,663	\$240,577	\$1,362,240

Actuarial Assumptions – OPERS

Actuarial valuations of an ongoing plan involve estimates of the value of reported amounts and assumptions about the probability of occurrence of events far into the future. Examples include assumptions about future employment, mortality, and cost trends. Actuarially determined amounts are subject to continual review or modification as actual results are compared with past expectations and new estimates are made about the future.

Projections of benefits for financial reporting purposes are based on the substantive plan (the plan as understood by the employers and plan members) and include the types of benefits provided at the time of each valuation. The total pension liability was determined by an actuarial valuation as of December 31, 2016, using the following actuarial assumptions applied to all prior periods included in the measurement in accordance with the requirements of GASB 67. In 2016, the Board’s actuarial consultants conducted an experience study for the period 2011 through 2015, comparing assumptions to actual results. The experience study incorporates both a historical review and forward-looking projections to determine the appropriate set of assumptions to keep the plan on a path toward full funding. Information from this study led to changes in both demographic and economic assumptions, with the most notable being a reduction in the actuarially assumed rate of return from 8.0% down to 7.5%, for the defined benefit investments. Key methods and assumptions used in the latest actuarial valuation, reflecting experience study results, are presented below:

This Space Intentionally Left Blank

City of Wyoming, Ohio
Notes to the Basic Financial Statements
For The Fiscal Year Ended December 31, 2017

Key Methods and Assumptions Used in Valuation of Total Pension Liability

Actuarial Information	Traditional Pension Plan
Valuation Date	December 31, 2016
Experience Study	5 year period ending December 31, 2015
Actuarial Cost Method	Individual Entry Age
Actuarial Assumptions:	
Investment Rate of Return	7.50%
Wage Inflation	3.25%
Projected Salary Increases	3.25% - 10.75% (includes wage inflation at 3.25%)
Cost-of-Living Adjustments:	
Pre 1/7/2013 Retirees	3.00% Simple,
Post 1/7/2013 Retirees	3.00% Simple,
Through 2018, then	2.15% Simple.

Mortality rates are based on the RP-2014 Healthy Annuitant mortality table. For males, Healthy Annuitant Mortality tables were used, adjusted for mortality improvement back to the observation period base of 2006 and then established the base year as 2015. For females, Healthy Annuitant Mortality tables were used, adjusted for mortality improvements back to the observation period base year of 2006 and then established the base year as 2010. The mortality rates used in evaluating disability allowances were based on the RP-2014 Disabled mortality tables, adjusted for mortality improvement back to the observation base year of 2006 and then established the base year as 2015 for males and 2010 for females. Mortality rates for a particular calendar year for both healthy and disabled retiree mortality tables are determined by applying the MP-2015 mortality improvement scale to the above described tables.

The long-term expected rate of return on defined benefit investment assets was determined using a building-block method in which best-estimate ranges of expected future real rates of return are developed for each major asset class. These ranges are combined to produce the long-term expected real rate of return by weighting the expected future real rates of return by the target asset allocation percentage, adjusted for inflation.

During 2016, OPERS managed investments in four investment portfolios: the Defined Benefit portfolio, the 401(h) Health Care Trust portfolio, the 115 Health Care Trust portfolio and the Defined Contribution portfolio. The 401(h) Health Care Trust portfolio was closed as of June 30, 2016 and the net position transferred to the 115 Health Care Trust portfolio on July 1, 2016. The Defined Benefit portfolio contains the investment assets of the Traditional Pension Plan, the defined benefit component of the Combined Plan and the annuitized accounts of the Member-Directed Plan. The Defined Benefit portfolio historically included the assets of the Member-Directed retiree medical accounts funded through the VEBA Trust. However, the VEBA Trust was closed as of June 30, 2016 and the net position transferred to the 115 Health Care Trust portfolio on July 1, 2016. Within the Defined Benefit portfolio, contributions into the plans are all recorded at the same time, and benefit payments all occur on the first of the month. Accordingly, the money-weighted rate of return is considered to be the same for all plans within the portfolio. The annual money-weighted rate of return expressing investment performance, net of investment expenses and adjusted for the changing amounts actually invested, for the Defined Benefit portfolio is 8.3% for 2016.

City of Wyoming, Ohio
Notes to the Basic Financial Statements
For The Fiscal Year Ended December 31, 2017

The allocation of investment assets within the Defined Benefit portfolio is approved by the Board as outlined in the annual investment plan. Plan assets are managed on a total return basis with a long-term objective of achieving and maintaining a fully funded status for the benefits provided through the defined benefit pension plans. The following table displays the Board-approved asset allocation policy for 2016 and the long-term expected real rates of return:

Asset Class	Target Allocation	Weighted Average Long-Term Expected Real Rate of Return (Arithmetic)
Fixed Income	23.00 %	2.75 %
Domestic Equities	20.70	6.34
Real Estate	10.00	4.75
Private Equity	10.00	8.97
International Equities	18.30	7.95
Other Investments	18.00	4.92
Total	100.00 %	5.66 %

Discount Rate - The discount rate used to measure the total pension liability was 7.5%, post-experience study results, for the Traditional Pension Plan, Combined Plan and Member-Directed Plan. The projection of cash flows used to determine the discount rate assumed that contributions from plan members and those of the contributing employers are made at the contractually required rates, as actuarially determined. Based on those assumptions, the pension plan's fiduciary net position was projected to be available to make all projected future benefit payments of current plan members. Therefore, the long-term expected rate of return on pension plan investments for the Traditional Pension Plan, Combined Plan and Member-Directed Plan was applied to all periods of projected benefit payments to determine the total pension liability.

Sensitivity of the City Proportionate Share of the Net Pension Liability to Changes in the Discount Rate - The following table presents the net pension liability or asset calculated using the discount rate of 7.5%, and the expected net pension liability or asset if it were calculated using a discount rate that is 1.0% lower or 1.0% higher than the current rate:

	1% Decrease 6.50%	Current Discount Rate 7.50%	1% Increase 8.50%
City's proportionate share of the net pension liability:			
OPERS	\$5,697,814	\$3,729,611	\$2,089,461

Changes in Benefit Terms and Assumptions - There were no recent significant changes of benefit terms, investment policies, the size or composition of the population covered by the benefit terms impacting the actuarial valuation study for the year ended December 31, 2016.

City of Wyoming, Ohio
Notes to the Basic Financial Statements
For The Fiscal Year Ended December 31, 2017

In 2016, a five-year experience study was completed on the period January 1, 2011 through December 31, 2015. The Board adopted changes to both the demographic and economic assumptions as a result of the study. The most notable change in demographic assumptions is an increased life expectancy of the members and the most notable change in economic assumptions is the reduction in the actuarially assumed rate of return from 8.00% down to 7.50% for the defined benefit investments. The new assumptions are included in the 2016 actuarial valuation.

In 2016, OPERS, in conjunction with the Board’s investment consultants, also completed an asset liability study. Periodically, the System engages in a more comprehensive study that examines the nature of the pension liabilities the plan will ultimately pay and the characteristics of the asset allocation projections and the associated level of risk. As a result of this study, OPERS modified the asset allocation slightly, but not substantively.

Actuarial Assumptions – OPF

OPF’s total pension liability as of December 31, 2016 is based on the results of an actuarial valuation date of January 1, 2016, and rolled-forward using generally accepted actuarial procedures. The total pension liability is determined by OPF’s actuaries in accordance with GASB Statement No. 67, as part of their annual valuation. Actuarial valuations of an ongoing plan involve estimates of reported amounts and assumptions about probability of occurrence of events far into the future. Examples include assumptions about future employment mortality, salary increases, disabilities, retirements and employment terminations. Actuarially determined amounts are subject to continual review and potential modifications, as actual results are compared with past expectations and new estimates are made about the future.

Key methods and assumptions used in calculating the total pension liability in the latest actuarial valuation are presented below:

Key Methods and Assumptions Used in Valuation of Total Pension Liability	
Actuarial Information	OPF Pension Plan
Valuation Date	January 1, 2016, with actuarial liabilities rolled forward to December 31, 2016
Experience Study	5 year period ending December 31, 2011
Actuarial Cost Method	Entry Age Normal (Level Percent of Payroll)
Actuarial Assumptions:	
Investment Rate of Return	8.25%
Wage Inflation	3.25%, plus productivity increase rate of 0.50%
Projected Salary Increases	4.25% - 11.00%
Cost-of-Living Adjustments	3.00% Simple; 2.60% simple for increases based on the lesser of the increase in CPI and 3.00%

City of Wyoming, Ohio
Notes to the Basic Financial Statements
For The Fiscal Year Ended December 31, 2017

Rates of death are based on the RP2000 Combined Table, age-adjusted as follows. For active members, set back six years. For disability retirements, set forward five years for police (safety officers) and three years for firefighters. For service retirements, set back zero years for police (safety officers) and two years for firefighters. For beneficiaries, set back zero years. The rates are applied on a fully generational basis, with a base year of 2009, using mortality improvement Scale AA.

The most recent experience study of five years was completed in 2017 covering the period 2012-2016.

The long-term expected rate of return on pension plan investments was determined using a building-block approach and assumes a time horizon, as defined in the OPF's Statement of Investment Policy. A forecasted rate of inflation serves as the baseline for the return expectation. Various real return premiums over the baseline inflation rate have been established for each asset class. The long-term expected nominal rate of return has been determined by calculating a weighted averaged of the expected real return premiums for each asset class, adding the projected inflation rate and adding the expected return from rebalancing uncorrelated asset classes.

Best estimates of the long-term expected real rates of return for each major asset class included in OPF's target asset allocation as of December 31, 2016 are summarized below:

Asset Class	Target Allocation	10 Year Expected Real Rate of Return**	30 Year Expected Real Rate of Return**
Cash and Cash Equivalent	0.00 %	0.00 %	0.00 %
Domestic Equity	16.00	4.46	5.21
Non-US Equity	16.00	4.66	5.40
Core Fixed Income*	20.00	1.67	2.37
Global Inflation Protected Securities*	20.00	0.49	2.33
High Yield	15.00	3.33	4.48
Real Estate	12.00	4.71	5.65
Private Markets	8.00	7.31	7.99
Timber	5.00	6.87	6.87
Master Limited Partnerships	8.00	6.92	7.36
Total	120.00 %		

Note: Assumptions are geometric

* levered 2x

** Numbers are net of expected inflation

OPF's Board of Trustees has incorporated the "risk parity" concept into OPF's asset liability valuation with the goal of reducing equity risk exposure, which reduces overall Total Portfolio risk without sacrificing return, and creating a more risk-balanced portfolio based on their relationship between asset classes and economic environments. From the notional portfolio perspective above, the Total Portfolio may be levered up to 1.20 times due to the application of leverage in certain fixed income asset classes.

Discount Rate - The discount rate used to measure the total pension liability was 8.25%. The projection of cash flows used to determine the discount rate assumed the contributions from employers and from the members would be computed based on contribution requirements as stipulated by State statute.

City of Wyoming, Ohio
Notes to the Basic Financial Statements
For The Fiscal Year Ended December 31, 2017

Projected inflows from investment earning were calculated using the longer-term assumed investment rate of return 8.25 percent. Based on those assumptions, the plan’s fiduciary net position was projected to be available to make all future benefit payments of current plan members. Therefore, a long-term expected rate of return on pension plan investments was applied to all periods of projected benefits to determine the total pension liability.

Sensitivity of the City's Proportionate Share of the Net Pension Liability to Changes in the Discount Rate - Net pension liability is sensitive to changes in the discount rate, and to illustrate the potential impact the preceding table presents the net pension liability calculated using the discount rate of 8.25% as well as what the net pension liability would be if it were calculated using a discount rate that is one percentage point lower, 7.25% or one percentage point higher, 9.25% than the current rate.

	1% Decrease <u>(7.25%)</u>	Current Discount Rate <u>(8.25%)</u>	1% Increase <u>(9.25%)</u>
City's proportionate share of the net pension liability :			
OPF	\$4,880,819	\$3,664,604	\$2,633,846

Changes Between Measurement Date and Report Date - In October 2017, the OP&F Board adopted certain assumption changes which will impact their annual actuarial valuation prepared as of January 1, 2017. The most significant change is a reduction in the discount rate from 8.25 percent to 8 percent. Although the exact amount of these changes is not known, it has the potential to impact to the City's net pension liability.

Note 11 – Post Employment Benefits

Ohio Public Employees Retirement System

Plan Description

Ohio Public Employees Retirement System (OPERS) administers three separate pension plans: The Traditional Pension Plan—a cost-sharing, multiple-employer defined benefit pension plan; the Member-Directed Plan—a defined contribution plan; and the Combined Plan—a cost-sharing, multiple-employer defined benefit pension plan that has elements of both a defined benefit and defined contribution plan. In March 2016, OPERS received two favorable rulings from the Internal Revenue Service (IRS) allowing OPERS to consolidate all health care assets into the OPERS 115 Health Care Trust. Transition to the new health care trust structure was completed July 1, 2016. As of December 31, 2016, OPERS maintains a cost-sharing, multiple-employer defined benefit post-employment health care trust, which funds multiple health care plans including medical coverage, prescription drug coverage and deposits to a Health Reimbursement Arrangement to qualifying benefit recipients of both the Traditional Pension and the Combined plans. Members of the Member-Directed Plan do not qualify for ancillary benefits, including OPERS sponsored health care coverage. OPERS funds a Retiree Medical Account (RMA) for participants in the Member-Directed Plan. At retirement or refund, participants can be reimbursed for qualified medical expenses from their vested RMA balance.

In order to qualify for health care coverage, age-and-service retirees under the Traditional Pension and Combined plans must have 20 or more years of qualifying Ohio service credit. Health care coverage for disability benefit recipients and qualified survivor benefit recipients is available. The health care

City of Wyoming, Ohio
Notes to the Basic Financial Statements
For The Fiscal Year Ended December 31, 2017

coverage provided by OPERS meets the definition of an Other Post Employment Benefit (OPEB) as described in GASB Statement 45. Please see the Plan Statement in the OPERS 2015 CAFR for details.

The Ohio Revised Code permits, but does not require, OPERS to provide health care to its eligible benefit recipients. Authority to establish and amend health care coverage is provided to the OPERS Board of Trustees (OPERS Board) in Chapter 145 of the Ohio Revised Code.

OPERS issues a stand-alone financial report. Interested parties may obtain a copy by visiting <https://www.opers.org/financial/reports.shtml#CAFR>, by writing to OPERS, 277 East Town Street, Columbus, OH 43215-4642, or by calling 614-222-5601 or 800-222-7377.

Funding Policy

The Ohio Revised Code provides the statutory authority requiring public employers to fund health care through their contributions to OPERS. A portion of each employer's contribution to OPERS is set aside to fund OPERS health care plans.

Employer contribution rates are expressed as a percentage of the earnable salary of active members. In 2016, State and Local employers contributed at a rate of 14.0% of earnable salary and Public Safety and Law Enforcement employers contributed at 18.1%. These are the maximum employer contribution rates permitted by the Ohio Revised Code. Active member contributions do not fund health care.

Each year, the OPERS Board determines the portion of the employer contribution rate that will be set aside to fund health care plans. The portion of employer contributions allocated to health care for members in the Traditional Pension Plan and Combined Plan was 2.0% during calendar year 2016. As recommended by OPERS' actuary, the portion of employer contributions allocated to health care beginning January 1, 2017 decreased to 1.0% for both plans. The OPERS Board is also authorized to establish rules for the retiree or their surviving beneficiaries to pay a portion of the health care provided. Payment amounts vary depending on the number of covered dependents and the coverage selected. The employer contribution as a percentage of covered payroll deposited into the RMA for participants in the Member-Directed Plan for 2016 was 4.0%.

Information from City's Records

The rates stated in Funding Policy, above, are the contractually required contribution rates for OPERS. The City's actual contributions for the current year, which were used to fund postemployment benefits, were \$16,281 for 2017, \$42,463 for 2016, and \$41,419 for 2015. The full amount has been contributed for 2017, 2016 and 2015.

Ohio Police and Fire Pension Fund

Plan Description

The City contributes to the Ohio Police and Fire Pension Fund (OP&F) sponsored healthcare program, a cost sharing, multiple-employer defined post-employment healthcare plan administered by OP&F. OP&F provides healthcare benefits including coverage for medical, prescription drugs, dental, vision,

City of Wyoming, Ohio
Notes to the Basic Financial Statements
For The Fiscal Year Ended December 31, 2017

Medicare Part B Premium and long term care to retirees, qualifying benefit recipients and their eligible dependents.

OP&F provides access to post-retirement healthcare coverage for any person who receives or is eligible to receive a monthly service, disability, or survivor benefit check or is a spouse or eligible dependent child of such person. The healthcare coverage provided by OP&F meets the definition of an Other Post Employment Benefit (OPEB) as described in GASB Statement 45.

The Ohio Revised Code allows, but does not mandate, OP&F to provide OPEB benefits. Authority for the OP&F Board of Trustees to provide healthcare coverage to eligible participants and to establish and amend benefits is codified in Chapter 742 of the Ohio Revised Code.

OP&F issues a publicly available financial report that includes financial information and required supplementary information for the Plan. That report may be obtained by writing to OP&F, 140 East Town Street, Columbus, Ohio 43215-5164, or by visiting the OP&F website at www.op-f.org.

Funding Policy

The Ohio Revised Code provides for contribution requirements of the participating employers and of plan members to the OP&F (defined benefit pension plan). Participating employers are required to contribute to the pension plan at rates expressed as percentages of the payroll of active pension plan members, currently, 19.5% and 24.0% of covered payroll for police and fire employers, respectively. The Ohio Revised Code states that the employer contribution may not exceed 19.5% of the covered payroll for police employer units and 24.0% of covered payroll for fire employer units. Active members do not make contributions to the OPEB Plan.

OP&F maintains funds for health care in two separate accounts. One for health care benefits under IRS Code Section 115 trust and one for Medicare Part B reimbursements administrated as an Internal Revenue Code 401(h) account, both of which are within the defined benefit pension plan, under the authority granted by the Ohio Revised Code to the OP&F Board of Trustees.

The Board of Trustees is authorized to allocate a portion of the total employer contributions made into the pension plan to the Section 115 trust and Section 401(h) account as the employer contribution for retiree healthcare benefits. The portion of employer contributions allocated to health care was .5% of covered payroll from January 1, 2016 thru December 31, 2016. The amount of employer contributions allocated to the healthcare plan each year is subject to the Trustees' primary responsibility to ensure that pension benefits are adequately funded and is limited by the provisions of Sections 115 and 401(h).

The OP&F Board of Trustees also is authorized to establish requirements for contributions to the healthcare plan by retirees and their eligible dependents, or their surviving beneficiaries. Payment amounts vary depending on the number of covered dependents and the coverage selected.

Information from City's Records

The City's contributions to OP&F for the year ending December 31, 2017 was \$8,009, December 31, 2016 was \$7,088, and December 31, 2015 was \$6,814. The actual contributions for 2017, 2016 and 2015 were 100%.

City of Wyoming, Ohio
Notes to the Basic Financial Statements
For The Fiscal Year Ended December 31, 2017

Note 12 – Interfund Balances

Individual fund interfund receivable, interfund payable, transfers in and transfers out balances at fiscal year-end are as follows:

	Interfund		Transfers	
	Receivable	Payable	In	Out
General Fund	\$128,164	\$0	\$0	\$2,724,537
Capital Improvement Fund	0	104,781	2,651,701	0
Equipment Replacement Fund	74,117	0	0	0
Waterworks Fund	0	97,500	0	0
Other Governmental Funds	0	0	72,836	0
Total All Funds	<u>\$202,281</u>	<u>\$202,281</u>	<u>\$2,724,537</u>	<u>\$2,724,537</u>

Interfund balances/transfers are used to move revenues from the fund that statute or budget requires to collect them to the fund that statute or budget requires to expend them and unrestricted revenues collected in the fund to finance various programs accounted for in other funds in accordance with budgetary authorizations; to segregate money for anticipated capital projects; to provide additional resources for current operations or debt service; and to return money to the fund from which it was originally provided once a project is completed.

Note 13 – Outstanding Commitments

The City utilizes encumbrance accounting as part of its budgetary controls. Encumbrances outstanding at year end may be reported as part of restricted, committed or assigned classifications of fund balance. At year end, the City’s commitments for encumbrances in the governmental funds were as follows:

<u>Fund</u>	<u>Amount</u>
General	\$134,427
Capital Improvements	350,529
Equipment Replacement	55,174
Waterworks	49,198
Nonmajor Funds	<u>69,767</u>
Total	<u><u>\$659,095</u></u>

Note 14 – Implementation of New Accounting Principles

For the year ended December 31, 2017, the City has implemented Governmental Accounting Standards Board (GASB) Statement No. 80, “Blending Requirements for Certain Component Units – An Amendment of GASB Statement No. 14”, GASB Statement No. 81 “Irrevocable Split Interest Agreements”, and GASB Statement No. 82, “Pension Issues – An Amendment of GASB Statements No. 67, No. 68 and No. 73”.

City of Wyoming, Ohio
Notes to the Basic Financial Statements
For The Fiscal Year Ended December 31, 2017

GASB Statement No. 80 amends the blending requirements for the financial statement presentation of component units of all state and local governments. The additional criterion requires blending of a component unit incorporated as a not-for-profit corporation in which the primary government is the sole corporate member. The additional criterion does not apply to component units included in the financial reporting entity pursuant to the provisions of the Statement No. 39, *“Determining Whether Certain Organizations Are Component Units”*. The implementation of GASB Statement No. 80 did not have an effect on the financial statements of the City.

GASB Statement No. 81 improves accounting and financial reporting for irrevocable split-interest agreements by providing recognition and measurement guidance for situations in which a government is a beneficiary of the agreement. The implementation of GASB Statement No. 81 did not have an effect on the financial statements of the City.

GASB Statement No. 82 addresses issues regarding (1) the presentation of payroll-related measures in required supplementary information, (2) the selection of assumptions and the treatment of deviations from the guidance in an Actuarial Standard of Practice for financial reporting purposes, and (3) the classification of payments made by the employers to satisfy employee (plan member) contribution requirements. The implementation of GASB Statement No. 82 did not have an effect on the financial statements of the City.

Note 15 – Fund Balances

Fund balance is classified as nonspendable, restricted, committed, assigned and/or unassigned based primarily on the extent to which the City is bound to observe constraints imposed upon the use of the resources in the government funds. The constraints placed on fund balance for the major governmental funds and all other governmental funds are presented below:

This Space Intentionally Left Blank

City of Wyoming, Ohio
Notes to the Basic Financial Statements
For The Fiscal Year Ended December 31, 2017

Fund Balances	General	Capital Improvement	Equipment Replacement	Other Governmental Funds	Total
Nonspendable:					
Inventory	\$0	\$0	\$0	\$62,643	\$62,643
Total Nonspendable	0	0	0	62,643	62,643
Restricted for:					
Capital Improvement	0	604,321	0	0	604,321
Street Construction	0	0	0	392,255	392,255
State Highway	0	0	0	139,876	139,876
Criminal Activity Forfeitures	0	0	0	115	115
Drug Offenders	0	0	0	2,998	2,998
DUI Enforcement	0	0	0	9,247	9,247
Mayor's Court Computer	0	0	0	13,836	13,836
FEMA Firefighter Grant	0	0	0	3	3
Law Enforcement	0	0	0	8,137	8,137
Total Restricted	0	604,321	0	566,467	1,170,788
Committed to:					
Equipment Replacement	0	0	1,254,335	0	1,254,335
Total Committed	0	0	1,254,335	0	1,254,335
Assigned to:					
Debt Service	0	0	0	46	46
Retirement Reserve	488,097	0	0	0	488,097
Encumbrances	65,773	0	0	0	65,773
Budgetary	558,139	0	0	0	558,139
Total Assigned	1,112,009	0	0	46	1,112,055
Unassigned	1,910,289	0	0	0	1,910,289
Total Fund Balance	<u>\$3,022,298</u>	<u>\$604,321</u>	<u>\$1,254,335</u>	<u>\$629,156</u>	<u>\$5,510,110</u>

REQUIRED SUPPLEMENTARY INFORMATION

City of Wyoming, Ohio
 Required Supplementary Information
 Schedule of the City's Proportionate Share of the Net Pension Liability
 Ohio Public Employees Retirement System - Traditional Plan
 Last Four Fiscal Years (1)

	2017	2016	2015	2014
City's Proportion of the Net Pension Liability	0.01642400%	0.01664600%	0.01639800%	0.01639800%
City's Proportionate Share of the Net Pension Liability	\$3,729,611	\$2,883,297	\$1,977,782	\$1,933,111
City's Covered-Employee Payroll	\$2,123,167	\$2,417,067	\$2,017,055	\$2,899,992
City's Proportionate Share of the Net Pension Liability as a Percentage of its Covered-Employee Payroll	175.66%	119.29%	98.05%	66.66%
Plan Fiduciary Net Position as a Percentage of the Total Pension Liability	77.25%	81.08%	86.45%	86.36%

(1) - Information prior to 2013 is not available

Note - Amounts presented as of the City's measurement date which is the prior fiscal year end.

City of Wyoming, Ohio
 Required Supplementary Information
 Schedule of the City's Proportionate Share of the Net Pension Liability
 Ohio Police and Fire Pension Fund
 Last Four Fiscal Years (1)

	2017	2016	2015	2014
City's Proportion of the Net Pension Liability	0.0578570%	0.0595120%	0.0604886%	0.0604886%
City's Proportionate Share of the Net Pension Liability	\$3,664,604	\$3,828,449	\$3,133,562	\$2,945,985
City's Covered-Employee Payroll	\$1,417,605	\$1,304,435	\$1,243,324	\$1,676,036
City's Proportionate Share of the Net Pension Liability as a Percentage of its Covered-Employee Payroll	258.51%	293.49%	252.03%	175.77%
Plan Fiduciary Net Position as a Percentage of the Total Pension Liability	68.36%	66.77%	72.20%	73.00%

(1) - Information prior to 2013 is not available

Note - Amounts presented as of the City's measurement date which is the prior fiscal year end.

City of Wyoming, Ohio
 Required Supplementary Information
 Schedule of City Contributions
 Ohio Public Employees Retirement System - Traditional Plan
 Last Four Fiscal Years (1)

	<u>2017</u>	<u>2016</u>	<u>2015</u>	<u>2014</u>
Contractually Required Contribution	\$280,987	\$254,780	\$290,048	\$242,047
Contributions in Relation to the Contractually Required Contribution	<u>(280,987)</u>	<u>(254,780)</u>	<u>(290,048)</u>	<u>(242,047)</u>
Contribution Deficiency (Excess)	<u>\$0</u>	<u>\$0</u>	<u>\$0</u>	<u>\$0</u>
City's Covered-Employee Payroll	\$2,161,438	\$2,123,167	\$2,417,067	\$2,017,058
Contributions as a Percentage of Covered-Employee Payroll	13.00%	12.00%	12.00%	12.00%

(1) - Information prior to 2014 is not available

City of Wyoming, Ohio
 Required Supplementary Information
 Schedule of City Contributions
 Ohio Police and Fire Pension Fund
 Last Four Fiscal Years (1)

	2017	2016	2015	2014
Contractually Required Contribution	\$300,145	\$269,345	\$262,061	\$253,141
Contributions in Relation to the Contractually Required Contribution	<u>(300,145)</u>	<u>(269,345)</u>	<u>(262,061)</u>	<u>(253,141)</u>
Contribution Deficiency (Excess)	<u>\$0</u>	<u>\$0</u>	<u>\$0</u>	<u>\$0</u>
City's Covered-Employee Payroll	\$1,579,711	\$1,417,605	\$1,304,435	\$1,243,325
Contributions as a Percentage of Covered-Employee Payroll	19.00%	19.00%	20.09%	20.36%

(1) - Information prior to 2014 is not available

City of Wyoming, Ohio
 Schedule of Revenues, Expenditures and Changes in Fund Balance
 Budget and Actual (Non-GAAP Budgetary Basis)
 For the Fiscal Year Ended December 31, 2017

	General Fund			
	Original Budget	Final Budget	Actual	Variance from Final Budget
Revenues:				
Property Taxes	\$2,539,102	\$2,564,555	\$2,672,404	\$107,849
Income Taxes	5,801,904	5,860,066	6,106,502	246,436
Charges for Services	274,096	276,844	288,486	11,642
Investment Earnings	54,142	54,684	56,984	2,300
Intergovernmental	470,330	475,045	495,022	19,977
Fines, Licenses & Permits	169,444	171,143	178,340	7,197
Other Revenues	215,603	217,764	226,922	9,158
Total Revenues	9,524,621	9,620,101	10,024,660	404,559
Expenditures:				
Current:				
General Government				
Personnel Services	1,177,784	1,203,226	1,148,182	55,044
Contractual Services	852,292	870,703	830,871	39,832
Supplies and Materials	15,864	16,206	15,465	741
Other Expenditures	212,876	217,475	207,526	9,949
Total General Government	2,258,816	2,307,610	2,202,044	105,566
Public Safety				
Personnel Services	2,681,733	2,739,663	2,614,331	125,332
Contractual Services	161,979	165,478	157,908	7,570
Supplies and Materials	98,165	100,286	95,698	4,588
Total Public Safety	2,941,877	3,005,427	2,867,937	137,490
Recreation				
Contractual Services	195,190	199,406	190,284	9,122
Total Leisure Time Activities	195,190	199,406	190,284	9,122
Community Environment				
Personnel Services	178,253	182,104	173,773	8,331
Contractual Services	16,681	17,042	16,262	780
Supplies and Materials	80,599	82,340	78,573	3,767
Total Community Development	275,533	281,486	268,608	12,878
Basic Utility Service				
Contractual Services	660,519	674,788	643,918	30,870
Total Basic Utility Service	660,519	674,788	643,918	30,870

Continued

City of Wyoming, Ohio
 Schedule of Revenues, Expenditures and Changes in Fund Balance
 Budget and Actual (Non-GAAP Budgetary Basis)
 For the Fiscal Year Ended December 31, 2017

	General Fund			
	Original Budget	Final Budget	Actual	Variance from Final Budget
Transportation and Street Repair				
Personnel Services	639,661	653,479	623,584	29,895
Contractual Services	48,070	49,109	46,862	2,247
Supplies and Materials	133,286	136,165	129,936	6,229
Total Transportation and Street Repair	821,017	838,753	800,382	38,371
Public Health and Welfare				
Contractual Services	20,106	20,541	19,601	940
Total Public Health and Welfare	20,106	20,541	19,601	940
Total Expenditures	7,173,058	7,328,011	6,992,774	335,237
Excess of Revenues Over (Under) Expenditures	2,351,563	2,292,090	3,031,886	739,796
Other financing sources (uses):				
Advances (Out)	(48,610)	(49,660)	(47,388)	2,272
Transfers In	171,021	172,736	180,000	7,264
Transfers (Out)	(3,657,044)	(3,736,043)	(3,565,129)	170,914
Total Other Financing Sources (Uses)	(3,534,633)	(3,612,967)	(3,432,517)	180,450
Net Change in Fund Balance	(1,183,070)	(1,320,877)	(400,631)	920,246
Fund Balance Beginning of Year, (includes prior year encumbrances appropriated)	1,879,810	1,879,810	1,879,810	0
Fund Balance End of Year	\$696,740	\$558,933	\$1,479,179	\$920,246

See accompanying notes to the required supplementary information.

City of Wyoming, Ohio
Notes to the Required Supplementary Information
For The Fiscal Year Ended December 31, 2017

Note 1 – Budgetary Process

All funds, except agency funds, are legally required to be budgeted and appropriated. The major documents prepared are the tax budget, the certificate of estimated resources, and the appropriations resolution, all of which are prepared on the budgetary basis of accounting. The tax budget demonstrates a need for existing or increased tax rates. The certificate of estimated resources establishes a limit on the amount Council may appropriate. The appropriations resolution is Council's authorization to spend resources and sets annual limits on expenditures plus encumbrances at the level of control selected by Council. The legal level of control has been established by Council at the object level for all funds.

The certificate of estimated resources may be amended during the year if projected increases or decreases in revenue are identified by the Finance Director. The amounts reported as the original budgeted amounts on the budgetary statements reflect the amounts on the certificate of estimated resources when the original appropriations were adopted. The amounts reported as the final budgeted amounts on the budgetary statements reflect the amounts on the final amended certificate of estimated resources issued during the year.

The appropriation resolution is subject to amendment throughout the year with the restriction that appropriations cannot exceed estimated resources. The amounts reported as the original budgeted amounts reflect the first appropriation resolution for that fund that covered the entire year, including amounts automatically carried forward from prior years. The amounts reported as the final budgeted amounts represent the final appropriation amounts passed by Council during the year.

While the City is reporting financial position, results of operations and changes in fund balance on the basis of generally accepted accounting principles (GAAP), the budgetary basis as provided by law is based upon accounting for certain transactions on a basis of cash receipts, disbursements and encumbrances. The Schedule of Revenues, Expenditures and Changes in Fund Balances – Budget and Actual (Non-GAAP Basis) presented for the general fund is presented on the budgetary basis to provide a meaningful comparison of actual results with the budget. The major differences between the budget basis and GAAP basis are as follows:

1. Revenues are recorded when received in cash (budget) as opposed to when susceptible to accrual (GAAP).
2. Expenditures are recorded when paid in cash (budget) as opposed to when the liability is incurred (GAAP).
3. Encumbrances are treated as expenditures (budget) rather than as an assignment of fund balance (GAAP).
4. Some funds are reported as part of the general fund (GAAP basis) as opposed to the general fund being reported alone (budget basis).

City of Wyoming, Ohio
Notes to the Required Supplementary Information
For The Fiscal Year Ended December 31, 2017

The following table summarizes the adjustments necessary to reconcile the GAAP basis statements to the budgetary basis statements for the general fund.

Net Change in Fund Balance

	General
GAAP Basis	(\$46,539)
Revenue Accruals	(917,703)
Expenditure Accruals	1,409,640
Transfers In	180,000
Transfers (Out)	(840,592)
Advances (Out)	(47,388)
Encumbrances	(134,427)
Funds Budgeted Elsewhere	(3,622)
Budget Basis	<u>(\$400,631)</u>

Note 2 – Pension Plans

Ohio Police and Fire Pension Fund Changes in Benefit Terms and Assumptions

There have been no plan amendments adopted or changes in assumptions since the latest actuarial valuation, as of January 1, 2016, with actuarial liability rolled forward to December 31, 2016. The assumed investment rate of return and the discount rate is 8.25 percent.

Ohio Public Employees Retirement System Changes in Benefit Terms and Assumptions

There were no recent significant changes of benefit terms, investment policies, the size or composition of the population covered by the benefit terms impacting the actuarial valuation study for the year ended December 31, 2016.

In 2016, a five-year experience study was completed on the period January 1, 2011 through December 31, 2015. The Board adopted changes to both the demographic and economic assumptions as a result of the study. The most notable change in demographic assumptions is an increased life expectancy of the members and the most notable change in economic assumptions is the reduction in the actuarially assumed rate of return from 8.00% down to 7.50% for the defined benefit investments. The new assumptions are included in the 2016 actuarial valuation.

In 2016, OPERS, in conjunction with the Board’s investment consultants, also completed an asset liability study. Periodically, the System engages in a more comprehensive study that examines the nature of the pension liabilities we will ultimately pay and the characteristics of the asset allocation projections and the associated level of risk. As a result of this study, OPERS modified the asset allocation slightly, but not substantively.

COMBINING STATEMENTS AND INDIVIDUAL FUND SCHEDULES



MAJOR GOVERNMENTAL FUNDS

Capital Improvement - To account for various capital projects financed by governmental funds. The Balance Sheet and Statement of Revenues, Expenditures and Changes in Fund Balance are included in the Basic Financial Statements. The Schedule of Revenues, Expenditures and Changes in Fund Balance Budget and Actual (Non-GAAP Budgetary Basis) follows this page.

Equipment Replacement - To account for the acquisition and replacement of equipment. This fund does not generate any revenue and is financed by transfers from other funds. The Balance Sheet and Statement of Revenues, Expenditures and Changes in Fund Balance are included in the Basic Financial Statements. The Schedule of Revenues, Expenditures and Changes in Fund Balance Budget and Actual (Non-GAAP Budgetary Basis) follows this page.

City of Wyoming, Ohio
Schedule of Revenues, Expenditures and Changes in Fund Balance
Budget and Actual (Non-GAAP Budgetary Basis)
For the Fiscal Year Ended December 31, 2017

	Capital Improvement Fund		
	Final Budget	Actual	Variance from Final Budget
Revenues:			
Intergovernmental	\$288,316	\$472,876	\$184,560
Other Revenues	3,714	6,091	2,377
Total Revenues	292,030	478,967	186,937
Expenditures:			
Capital Outlay	6,778,087	2,450,727	4,327,360
Debt Service:			
Principal Retirement	1,984,835	717,649	1,267,186
Interest and Fiscal Charges	1,098,991	397,358	701,633
Total Expenditures	9,861,913	3,565,734	6,296,179
Excess of Revenues Over (Under) Expenditures	(9,569,883)	(3,086,767)	6,483,116
Other Financing Sources (Uses):			
Issuance of Debt	3,953,187	6,483,747	2,530,560
Advances (Out)	(118,927)	(43,000)	75,927
Sale of Refunding Bonds	3,763,878	6,173,255	2,409,377
Transfers In	1,616,761	2,651,701	1,034,940
Total Other Financing Sources (Uses)	9,214,899	15,265,703	6,050,804
Net Change in Fund Balance	(354,984)	12,178,936	12,533,920
Fund Balance Beginning of Year (includes prior year encumbrances appropriated)	643,928	643,928	0
Fund Balance End of Year	\$288,944	\$12,822,864	\$12,533,920

City of Wyoming, Ohio
 Schedule of Revenues, Expenditures and Changes in Fund Balance
 Budget and Actual (Non-GAAP Budgetary Basis)
 For the Fiscal Year Ended December 31, 2017

	Equipment Replacement Fund		
	Final Budget	Actual	Variance from Final Budget
Revenues:			
Other Revenues	\$4,817	\$5,893	\$1,076
Total Revenues	4,817	5,893	1,076
Expenditures:			
Capital Outlay	600,565	542,070	58,495
Total Expenditures	600,565	542,070	58,495
Excess of Revenues Over (Under) Expenditures	(595,748)	(536,177)	59,571
Other Financing Sources (Uses):			
Proceeds from Sale of Capital Assets	23,097	28,256	5,159
Advances In	124,974	152,888	27,914
Total Other Financing Sources (Uses)	148,071	181,144	33,073
Net Change in Fund Balance	(447,677)	(355,033)	92,644
Fund Balance Beginning of Year (includes prior year encumbrances appropriated)	1,480,076	1,480,076	0
Fund Balance End of Year	\$1,032,399	\$1,125,043	\$92,644

NONMAJOR GOVERNMENTAL FUNDS

Special Revenue Funds

Special Revenue funds are used to account for and report the proceeds of specific revenue sources that are restricted or committed to expenditures for specified purposes other than debt service or capital projects. The term *proceeds of specific revenue sources* establishes that one or more specific restricted or committed revenues should be the foundation for a special revenue fund.

Debt Service Funds

The debt service fund is used to account for and report financial resources that are restricted, committed, or assigned to expenditure for principal and interest. Debt service funds should be used to report resources if legally mandated (i.e. debt payable from property taxes). Financial resources that are being accumulated for principal and interest maturing in future years also should be reported in debt service funds. The City has two Debt Service Funds for fiscal year 2017, the Public Facility Note Retirement Fund and the Property Acquisition Note Retirement Fund.

City of Wyoming, Ohio
Combining Balance Sheet
Nonmajor Governmental Funds
December 31, 2017

	Nonmajor Special Revenue Funds	Nonmajor Debt Service Fund	Total Nonmajor Governmental Funds
Assets:			
Equity in Pooled Cash and Investments	\$545,266	\$46	\$545,312
Receivables (Net):			
Interest	743	0	743
Intergovernmental	203,669	0	203,669
Inventory	62,643	0	62,643
Total Assets	812,321	46	812,367
Liabilities:			
Accounts Payable	7,374	0	7,374
Accrued Wages and Benefits	1,907	0	1,907
Total Liabilities	9,281	0	9,281
Deferred Inflows of Resources:			
Grants and Other Taxes	173,801	0	173,801
Accounts and Investment Earnings	129	0	129
Total Deferred Inflows of Resources	173,930	0	173,930
Fund Balances:			
Nonspendable	62,643	0	62,643
Restricted	566,467	0	566,467
Assigned	0	46	46
Total Fund Balances	629,110	46	629,156
Total Liabilities, Deferred Inflows and Fund Balances	\$812,321	\$46	\$812,367

City of Wyoming, Ohio
Combining Statement of Revenues, Expenditures
and Changes in Fund Balance
Nonmajor Governmental Funds
For the Fiscal Year Ended December 31, 2017

	Nonmajor Special Revenue Funds	Nonmajor Debt Service Fund	Total Nonmajor Governmental Funds
Revenues:			
Investment Earnings	\$2,132	\$0	\$2,132
Intergovernmental	424,574	0	424,574
Fines, Licenses & Permits	21,424	0	21,424
Total Revenues	448,130	0	448,130
Expenditures:			
Current:			
Public Safety	15,350	0	15,350
Transportation and Street Repair	253,128	0	253,128
Capital Outlay	156,765	0	156,765
Debt Service:			
Principal	0	70,000	70,000
Interest and Other Charges	0	4,200	4,200
Total Expenditures	425,243	74,200	499,443
Excess of Revenues Over (Under) Expenditures	22,887	(74,200)	(51,313)
Other Financing Sources (Uses):			
Transfers In	0	72,836	72,836
Total Other Financing Sources (Uses)	0	72,836	72,836
Net Change in Fund Balance	22,887	(1,364)	21,523
Fund Balance - Beginning of Year	598,780	1,410	600,190
Change in Nonspendable for Inventory	7,443	0	7,443
Fund Balance - End of Year	\$629,110	\$46	\$629,156

NONMAJOR SPECIAL REVENUE FUNDS

Fund Descriptions

Street Construction - Required by the Ohio Revised Code to account for that portion of the state gasoline tax and motor vehicle registration fees designated for maintenance of streets within the City.

State Highway - Required by the Ohio Revised Code to account for that portion of the state gasoline and motor vehicle registration fees designated for maintenance of state highways (Springfield Pike) within the City. 7.5 percent of state gasoline and auto license taxes are allocated to this fund.

Criminal Activity Forfeitures - Established in 1988 to enable the City to retain proceeds from the sale of contraband obtained by the Police Department through property seizure. Under State law, disbursements may be made from the fund only to pay the costs of investigations, technical training, matching funds for federal grants or other appropriate law enforcement purposes.

Drug Offenders - To account for monies acquired through mandatory fines imposed on felony drug traffic offenders and forfeited bail monies.

DUI Enforcement - Established in 1991 to receive fines imposed upon DUI offenders. Under state law, disbursements may be made from this fund for law enforcement purposes related to informing the public of laws governing the operation of a motor vehicle while under the influence of alcohol, and other information relating to the operation of a motor vehicle and the consumption of alcoholic beverages.

Mayor's Court Computer - To account for monies received from court fines. Monies generated under this fund shall be used for computer related expenses of the Court.

FEMA Firefighter Grant - To account for monies received from the proceeds of the City's FEMA Firefighter grant. Monies from this grant will be used for firefighting expenses (training, etc.).

Law Enforcement - To account for monies received from the proceeds of the City's law enforcement activities, which participate with federal agencies in the arrest, and seizure of assets.

City of Wyoming, Ohio
Combining Balance Sheet
Nonmajor Special Revenue Funds
December 31, 2017

	Street Construction	State Highway	Criminal Activity Forfeitures	Drug Offenders
Assets:				
Equity in Pooled Cash and Investments	\$372,856	\$138,013	\$115	\$2,998
Receivables (Net):				
Interest	542	201	0	0
Intergovernmental	188,669	15,000	0	0
Inventory	62,643	0	0	0
Total Assets	624,710	153,214	115	2,998
Liabilities:				
Accounts Payable	7,047	266	0	0
Accrued Wages and Benefits	1,907	0	0	0
Total Liabilities	8,954	266	0	0
Deferred Inflows of Resources:				
Grants and Other Taxes	160,764	13,037	0	0
Accounts and Investment Earnings	94	35	0	0
Total Deferred Inflows of Resources	160,858	13,072	0	0
Fund Balances:				
Nonspendable	62,643	0	0	0
Restricted	392,255	139,876	115	2,998
Total Fund Balances	454,898	139,876	115	2,998
Total Liabilities, Deferred Inflows and Fund Balances	\$624,710	\$153,214	\$115	\$2,998

DUI Enforcement	Mayor's Court Computer	FEMA Firefighter Grant	Law Enforcement	Total Nonmajor Special Revenue Funds
\$9,247	\$13,836	\$3	\$8,198	\$545,266
0	0	0	0	743
0	0	0	0	203,669
0	0	0	0	62,643
<u>9,247</u>	<u>13,836</u>	<u>3</u>	<u>8,198</u>	<u>812,321</u>
0	0	0	61	7,374
0	0	0	0	1,907
0	0	0	61	9,281
0	0	0	0	173,801
0	0	0	0	129
0	0	0	0	173,930
0	0	0	0	62,643
9,247	13,836	3	8,137	566,467
<u>9,247</u>	<u>13,836</u>	<u>3</u>	<u>8,137</u>	<u>629,110</u>
<u>\$9,247</u>	<u>\$13,836</u>	<u>\$3</u>	<u>\$8,198</u>	<u>\$812,321</u>

City of Wyoming, Ohio
Combining Statement of Revenues, Expenditures
and Changes in Fund Balance
Nonmajor Special Revenue Funds
For the Fiscal Year Ended December 31, 2017

	Street Construction	State Highway	Criminal Activity Forfeitures	Drug Offenders
Revenues:				
Investment Earnings	\$1,476	\$656	\$0	\$0
Intergovernmental	393,008	31,566	0	0
Fines, Licenses & Permits	0	0	0	0
Total Revenues	394,484	32,222	0	0
Expenditures:				
Current:				
Public Safety	0	60	0	0
Transportation and Street Repair	241,404	11,724	0	0
Capital Outlay	156,765	0	0	0
Total Expenditures	398,169	11,784	0	0
Excess of Revenues Over (Under) Expenditures	(3,685)	20,438	0	0
Total Other Financing Sources (Uses)	0	0	0	0
Net Change in Fund Balance	(3,685)	20,438	0	0
Fund Balance - Beginning of Year	451,140	119,438	115	2,998
Change in Nonspendable for Inventory	7,443	0	0	0
Fund Balance - End of Year	\$454,898	\$139,876	\$115	\$2,998

DUI Enforcement	Mayor's Court Computer	FEMA Firefighter Grant	Law Enforcement	Total Nonmajor Special Revenue Funds
\$0	\$0	\$0	\$0	\$2,132
0	0	0	0	424,574
1,332	14,701	0	5,391	21,424
1,332	14,701	0	5,391	448,130
0	15,229	0	61	15,350
0	0	0	0	253,128
0	0	0	0	156,765
0	15,229	0	61	425,243
1,332	(528)	0	5,330	22,887
0	0	0	0	0
1,332	(528)	0	5,330	22,887
7,915	14,364	3	2,807	598,780
0	0	0	0	7,443
\$9,247	\$13,836	\$3	\$8,137	\$629,110

City of Wyoming, Ohio
Schedule of Revenues, Expenditures and Changes in Fund Balance
Budget and Actual (Non-GAAP Budgetary Basis)
For the Fiscal Year Ended December 31, 2017

	Street Construction Fund		
	Final Budget	Actual	Variance from Final Budget
Revenues:			
Investment Earnings	\$3,207	\$3,269	\$62
Intergovernmental	388,293	395,742	7,449
Total Revenues	391,500	399,011	7,511
Expenditures:			
Current:			
Transportation and Street Repair			
Personnel Services	116,595	98,445	18,150
Contractual Services	113,225	95,600	17,625
Supplies and Materials	124,795	105,369	19,426
Total Transportation and Street Repair	354,615	299,414	55,201
Capital Outlay	185,667	156,765	28,902
Total Expenditures	540,282	456,179	84,103
Net Change in Fund Balance	(148,782)	(57,168)	91,614
Fund Balance Beginning of Year (includes prior year encumbrances appropriated)	378,396	378,396	0
Fund Balance End of Year	\$229,614	\$321,228	\$91,614

City of Wyoming, Ohio
 Schedule of Revenues, Expenditures and Changes in Fund Balance
 Budget and Actual (Non-GAAP Budgetary Basis)
 For the Fiscal Year Ended December 31, 2017

	State Highway Fund		
	Final Budget	Actual	Variance from Final Budget
Revenues:			
Investment Earnings	\$1,273	\$1,317	\$44
Intergovernmental	31,027	32,087	1,060
Total Revenues	32,300	33,404	1,104
Expenditures:			
Current:			
Transportation and Street Repair			
Personnel Services	12,558	6,098	6,460
Contractual Services	7,929	3,850	4,079
Supplies and Materials	14,721	7,148	7,573
Total Expenditures	35,208	17,096	18,112
Net Change in Fund Balance	(2,908)	16,308	19,216
Fund Balance Beginning of Year (includes prior year encumbrances appropriated)	116,935	116,935	0
Fund Balance End of Year	\$114,027	\$133,243	\$19,216

City of Wyoming, Ohio
 Schedule of Revenues, Expenditures and Changes in Fund Balance
 Budget and Actual (Non-GAAP Budgetary Basis)
 For the Fiscal Year Ended December 31, 2017

	Criminal Activity Forfeitures Fund		
	Final Budget	Actual	Variance from Final Budget
Revenues:			
Fines, Licenses & Permits	\$0	\$0	\$0
Total Revenues	0	0	0
Expenditures:			
Current:			
General Government			
Personnel Services	0	0	0
Total Expenditures	0	0	0
Net Change in Fund Balance	0	0	0
Fund Balance Beginning of Year (includes prior year encumbrances appropriated)	116	116	0
Fund Balance End of Year	\$116	\$116	\$0

City of Wyoming, Ohio
 Schedule of Revenues, Expenditures and Changes in Fund Balance
 Budget and Actual (Non-GAAP Budgetary Basis)
 For the Fiscal Year Ended December 31, 2017

	Drug Offenders Fund		
	Final Budget	Actual	Variance from Final Budget
Revenues:			
Fines, Licenses & Permits	\$0	\$0	\$0
Total Revenues	0	0	0
Expenditures:			
Current:			
Public Safety			
Personnel Services	0	0	0
Total Expenditures	0	0	0
Net Change in Fund Balance	0	0	0
Fund Balance Beginning of Year (includes prior year encumbrances appropriated)	2,998	2,998	0
Fund Balance End of Year	\$2,998	\$2,998	\$0

City of Wyoming, Ohio
 Schedule of Revenues, Expenditures and Changes in Fund Balance
 Budget and Actual (Non-GAAP Budgetary Basis)
 For the Fiscal Year Ended December 31, 2017

	DUI Enforcement Fund		
	Final Budget	Actual	Variance from Final Budget
Revenues:			
Fines, Licenses & Permits	\$1,332	\$1,332	\$0
Total Revenues	1,332	1,332	0
Expenditures:			
Current:			
Public Safety			
Personnel Services	0	0	0
Total Expenditures	0	0	0
Net Change in Fund Balance	1,332	1,332	0
Fund Balance Beginning of Year (includes prior year encumbrances appropriated)	7,914	7,914	0
Fund Balance End of Year	\$9,246	\$9,246	\$0

City of Wyoming, Ohio
 Schedule of Revenues, Expenditures and Changes in Fund Balance
 Budget and Actual (Non-GAAP Budgetary Basis)
 For the Fiscal Year Ended December 31, 2017

	Mayor's Court Computer Fund		
	Final Budget	Actual	Variance from Final Budget
Revenues:			
Fines, Licenses & Permits	\$5,000	\$14,408	\$9,408
Total Revenues	5,000	14,408	9,408
Expenditures:			
Current:			
Public Safety			
Contractual Services	16,622	16,470	152
Total Expenditures	16,622	16,470	152
Net Change in Fund Balance	(11,622)	(2,062)	9,560
Fund Balance Beginning of Year (includes prior year encumbrances appropriated)	13,269	13,269	0
Fund Balance End of Year	\$1,647	\$11,207	\$9,560

City of Wyoming, Ohio
 Schedule of Revenues, Expenditures and Changes in Fund Balance
 Budget and Actual (Non-GAAP Budgetary Basis)
 For the Fiscal Year Ended December 31, 2017

	FEMA Firefighter Grant Fund		
	Final Budget	Actual	Variance from Final Budget
Revenues:			
Intergovernmental	\$0	\$0	\$0
Total Revenues	0	0	0
Expenditures:			
Current:			
Public Safety			
Contractual Services	0	0	(0)
Total Expenditures	0	0	(0)
Net Change in Fund Balance	0	(0)	(0)
Fund Balance Beginning of Year (includes prior year encumbrances appropriated)	3	3	0
Fund Balance End of Year	\$3	\$3	(\$0)

City of Wyoming, Ohio
 Schedule of Revenues, Expenditures and Changes in Fund Balance
 Budget and Actual (Non-GAAP Budgetary Basis)
 For the Fiscal Year Ended December 31, 2017

	Law Enforcement Fund		
	Final Budget	Actual	Variance from Final Budget
Revenues:			
Fines, Licenses & Permits	\$5,390	\$5,391	\$1
Total Revenues	5,390	5,391	1
Expenditures:			
Current:			
General Government			
Personnel Services	0	0	0
Total Expenditures	0	0	0
Net Change in Fund Balance	5,390	5,391	1
Fund Balance Beginning of Year (includes prior year encumbrances appropriated)	2,807	2,807	0
Fund Balance End of Year	\$8,197	\$8,198	\$1

NONMAJOR DEBT SERVICE FUNDS

Fund Descriptions

Public Facility Note Retirement - To account for resources applied to the repayment of the outstanding public facility note debt obligation.

Property Acquisition Note Retirement - To account for resources applied to the repayment of the outstanding property acquisition note debt obligation.

City of Wyoming, Ohio
 Combining Balance Sheet
 Nonmajor Debt Service Funds
 December 31, 2017

	Public Facility Note Retirement	Property Acquisition Note Retirement	Total Nonmajor Debt Service Funds
Assets:			
Equity in Pooled Cash and Investments	\$28	\$18	\$46
Total Assets	<u>28</u>	<u>18</u>	<u>46</u>
Liabilities:			
Accounts Payable	0	0	0
Total Liabilities	<u>0</u>	<u>0</u>	<u>0</u>
Fund Balances:			
Assigned	28	18	46
Total Fund Balances	<u>28</u>	<u>18</u>	<u>46</u>
Total Liabilities, Deferred Inflows and Fund Balances	<u>\$28</u>	<u>\$18</u>	<u>\$46</u>

City of Wyoming, Ohio
 Combining Statement of Revenues, Expenditures
 and Changes in Fund Balance
 Nonmajor Debt Service Funds
 For the Fiscal Year Ended December 31, 2017

	Public Facility Note Retirement	Property Acquisition Note Retirement	Total Nonmajor Debt Service Funds
Revenues:			
Property and Other Taxes	\$0	\$0	\$0
Total Revenues	0	0	0
Expenditures:			
Current:			
Debt Service:			
Principal	0	70,000	70,000
Interest and Other Charges	0	4,200	4,200
Total Expenditures	0	74,200	74,200
Excess of Revenues Over (Under) Expenditures	0	(74,200)	(74,200)
Other Financing Sources (Uses):			
Transfers In	0	72,836	72,836
Total Other Financing Sources (Uses)	0	72,836	72,836
Net Change in Fund Balance	0	(1,364)	(1,364)
Fund Balance - Beginning of Year	28	1,382	1,410
Fund Balance - End of Year	\$28	\$18	\$46

City of Wyoming, Ohio
 Schedule of Revenues, Expenditures and Changes in Fund Balance
 Budget and Actual (Non-GAAP Budgetary Basis)
 For the Fiscal Year Ended December 31, 2017

	Public Facility Note Retirement Fund		
	Final Budget	Actual	Variance from Final Budget
Revenues:			
Property Taxes	\$0	\$0	\$0
Total Revenues	0	0	0
Expenditures:			
Debt Service:			
Principal Retirement	0	0	0
Total Expenditures	0	0	0
Total Other Financing Sources (Uses)	0	0	0
Net Change in Fund Balance	0	0	0
Fund Balance Beginning of Year (includes prior year encumbrances appropriated)	27	27	0
Fund Balance End of Year	\$27	\$27	\$0

City of Wyoming, Ohio
 Schedule of Revenues, Expenditures and Changes in Fund Balance
 Budget and Actual (Non-GAAP Budgetary Basis)
 For the Fiscal Year Ended December 31, 2017

	Property Acquisition Note Retirement Fund		
	Final Budget	Actual	Variance from Final Budget
Revenues:			
Property Taxes	\$0	\$0	\$0
Total Revenues	0	0	0
Expenditures:			
Debt Service:			
Principal Retirement	70,000	70,000	0
Interest and Fiscal Charges	4,200	4,200	0
Total Expenditures	74,200	74,200	0
Excess of Revenues Over (Under) Expenditures	(74,200)	(74,200)	0
Other Financing Sources (Uses):			
Transfers In	72,836	72,836	0
Total Other Financing Sources (Uses)	72,836	72,836	0
Net Change in Fund Balance	(1,364)	(1,364)	0
Fund Balance Beginning of Year (includes prior year encumbrances appropriated)	1,383	1,383	0
Fund Balance End of Year	<u>\$19</u>	<u>\$19</u>	<u>\$0</u>

OTHER GENERAL FUNDS

With the implementation of GASB Statement No. 54, certain funds that the City prepares legally adopted budgets for no longer meet the definition to be reported as Special Revenue funds and have been included with the General Fund in the governmental fund financial statements. The City has only presented the budget schedules for these funds.

Fund Descriptions

Recreation Fund – To account for the City’s operation of recreation programs. Revenues are derived from recreation fees, memberships, admissions, etc. Expenditures include personnel as well as operating expenses.

Retirement Reserve Fund – To reserve funds for the accrued liability associated with retirement benefits primarily unused accumulated sick leave.

Health/Life Insurance Fund – To account for payment of claims and premiums and the general administration of the health and life coverage provided to City employees.

City of Wyoming, Ohio
Schedule of Revenues, Expenditures and Changes in Fund Balance
Budget and Actual (Non-GAAP Budgetary Basis)
For the Fiscal Year Ended December 31, 2017

	Recreation (1) Fund		
	Final Budget	Actual	Variance from Final Budget
Revenues:			
Charges for Services	\$777,045	\$828,767	\$51,722
Other Revenues	318	339	21
Total Revenues	777,363	829,106	51,743
Expenditures:			
Current:			
Recreation			
Personnel Services	494,611	464,035	30,576
Contractual Services	526,810	494,243	32,567
Supplies and Materials	124,271	116,589	7,682
Other Expenditures	15,499	14,541	958
Total Expenditures	1,161,191	1,089,408	71,783
Other financing sources (uses):			
Transfers In	281,277	300,000	18,723
Total Other Financing Sources (Uses)	281,277	300,000	18,723
Net Change in Fund Balance	(102,551)	39,698	142,249
Fund Balance Beginning of Year (includes prior year encumbrances appropriated)	300,014	300,014	0
Fund Balance End of Year	\$197,463	\$339,712	\$142,249

(1) This fund is combined with the General fund in GAAP Statements.

City of Wyoming, Ohio
 Schedule of Revenues, Expenditures and Changes in Fund Balance
 Budget and Actual (Non-GAAP Budgetary Basis)
 For the Fiscal Year Ended December 31, 2017

	Retirement Reserve (1) Fund		
	Final Budget	Actual	Variance from Final Budget
Revenues:			
Other Revenues	\$0	\$0	\$0
Total Revenues	0	0	0
Expenditures:			
Current:			
General Government			
Personnel Services	33,000	33,000	0
Total Expenditures	33,000	33,000	0
Other financing sources (uses):			
Transfers In	90,592	90,592	0
Total Other Financing Sources (Uses)	90,592	90,592	0
Net Change in Fund Balance	57,592	57,592	0
Fund Balance Beginning of Year (includes prior year encumbrances appropriated)	419,169	419,169	0
Fund Balance End of Year	\$476,761	\$476,761	\$0

(1) This fund is combined with the General fund in GAAP Statements.

City of Wyoming, Ohio
 Schedule of Revenues, Expenditures and Changes in Fund Balance
 Budget and Actual (Non-GAAP Budgetary Basis)
 For the Fiscal Year Ended December 31, 2017

	Health/Life Insurance (1) Fund		
	Final Budget	Actual	Variance from Final Budget
Revenues:			
Other Revenues	\$102,708	\$106,541	\$3,833
Total Revenues	102,708	106,541	3,833
Expenditures:			
Current:			
General Government			
Personnel Services	641,026	523,948	117,078
Total Expenditures	641,026	523,948	117,078
Excess of Revenues Over (Under) Expenditures	(538,318)	(417,407)	120,911
Other financing sources (uses):			
Transfers In	501,292	520,000	18,708
Total Other Financing Sources (Uses)	501,292	520,000	18,708
Net Change in Fund Balance	(37,026)	102,593	139,619
Fund Balance Beginning of Year (includes prior year encumbrances appropriated)	191,916	191,916	0
Fund Balance End of Year	\$154,890	\$294,509	\$139,619

(1) This fund is combined with the General fund in GAAP Statements.

NONMAJOR FUNDS

Fiduciary Funds: Fiduciary fund types are used to account for assets held by the City in a trustee capacity or as an agent for individuals, private organizations, other governmental units and/or other funds.

Fund Descriptions

Agency Fund - Sewer - To account for all revenues collected for the Metropolitan Sewer District (MSD) for provision of sewer service to the citizens of Wyoming and to record sewer service charges paid to MSD.

Agency Fund - Mayor's Court - To account for funds that flow through the Mayor's Court Office.

City of Wyoming, Ohio
Statement of Changes In Assets and Liabilities
Agency Funds
For the Fiscal Year Ended December 31, 2017

	Sewer			Ending Balance
	Beginning Balance	Additions	Deductions	
Assets:				
Equity in Pooled Cash and Investments	\$347,349	\$2,369,875	\$2,396,244	\$320,980
Receivables (Net):				
Accounts	571,342	601,410	571,342	601,410
Total Assets	918,691	2,971,285	2,967,586	922,390
Liabilities:				
Undistributed Monies	918,691	2,971,285	2,967,586	922,390
Total Liabilities	\$918,691	\$2,971,285	\$2,967,586	\$922,390

	Mayor's Court			Ending Balance
	Beginning Balance	Additions	Deductions	
Assets:				
Equity in Pooled Cash and Investments	\$7,023	\$224,973	\$223,267	\$8,729
Total Assets	7,023	224,973	223,267	8,729
Liabilities:				
Undistributed Monies	7,023	224,973	223,267	8,729
Total Liabilities	\$7,023	\$224,973	\$223,267	\$8,729

	Total All Agency Funds			Ending Balance
	Beginning Balance	Additions	Deductions	
Assets:				
Equity in Pooled Cash and Investments	\$354,372	\$2,594,848	\$2,619,511	\$329,709
Receivables (Net):				
Accounts	571,342	601,410	571,342	601,410
Total Assets	925,714	3,196,258	3,190,853	931,119
Liabilities:				
Undistributed Monies	925,714	3,196,258	3,190,853	931,119
Total Liabilities	\$925,714	\$3,196,258	\$3,190,853	\$931,119

STATISTICAL SECTION



This page intentionally left blank.

STATISTICAL SECTION

This part of the City's comprehensive annual financial report presents detailed information as a context for understanding what the information in the financial statements, note disclosures, and required supplementary information says about the City's overall financial health.

Contents

Financial Trends - These schedules contain trend information to help the reader understand how the City's financial position has changed over time.

Revenue Capacity - These schedules contain information to help the reader understand and assess the City's most significant local revenue sources, the income tax and property tax.

Debt Capacity - These schedules present information to help the reader assess the affordability of the City's current levels of outstanding debt and the City's ability to issue additional debt in the future.

Economic and Demographic Information - These schedules offer economic and demographic indicators to help the reader understand the environment within which the City's financial activities take place and to provide information that facilitates comparisons of financial information over time and among governments.

Operating Information - These schedules contain service and infrastructure data to help the reader understand how the information in the City's financial report relates to the services the City provides and the activities it performs.

Sources - Unless otherwise noted, the information in these schedules is derived from the comprehensive annual financial reports for the relevant year.

THIS PAGE INTENTIONALLY LEFT BLANK



City of Wyoming, Ohio
 Net Position by Component
 Last Ten Calendar Years
 (accrual basis of accounting)
 Schedule 1

	Calendar Year									
	2008	2009	2010	2011	2012	2013	2014	2015	2016	2017
Governmental Activities										
Net Investment in Capital Assets	\$17,213,738	\$16,825,156	\$18,034,434	\$18,943,615	\$19,545,514	\$19,490,276	\$20,104,958	\$20,759,118	\$22,007,326	\$23,807,060
Restricted	403,221	494,819	497,040	537,430	678,097	643,252	636,916	974,963	957,802	1,385,826
Unrestricted	6,779,977	6,987,201	6,295,759	5,206,503	5,790,786	6,574,627	5,849,558	2,020,193	1,460,746	387,699
Total Governmental Activities Net Position	\$24,396,936	\$24,307,176	\$24,827,233	\$24,687,548	\$26,014,397	\$26,708,155	\$26,591,432	\$23,754,274	\$24,425,874	\$25,580,585
Business-Type Activities										
Net Investment in Capital Assets	\$526,502	\$462,426	\$1,470,391	\$2,580,270	\$3,138,806	\$3,347,370	\$3,455,469	\$3,915,440	\$4,163,666	\$4,417,560
Restricted	179,690	0	0	0	0	0	0	0	0	0
Unrestricted	759,651	717,359	716,533	508,242	1,690,179	1,667,394	1,609,198	1,400,807	1,249,667	1,314,418
Total Business-Type Activities Net Position	\$1,465,843	\$1,179,785	\$2,186,924	\$3,088,512	\$4,828,985	\$5,014,764	\$5,064,667	\$5,316,247	\$5,413,333	\$5,731,978
Total Primary Government										
Net Investment in Capital Assets	\$17,740,240	\$17,287,582	\$19,504,825	\$21,523,885	\$22,684,320	\$22,837,646	\$23,560,427	\$24,674,558	\$26,170,992	\$28,224,620
Restricted	582,911	494,819	497,040	537,430	678,097	643,252	636,916	974,963	957,802	1,385,826
Unrestricted	7,539,628	7,704,560	7,012,292	5,714,745	7,480,965	8,242,021	7,458,756	3,421,000	2,710,413	1,702,117
Total Primary Government Net Position	\$25,862,779	\$25,486,961	\$27,014,157	\$27,776,060	\$30,843,382	\$31,722,919	\$31,656,099	\$29,070,521	\$29,839,207	\$31,312,563

Source: City Records

City of Wyoming, Ohio
Changes in Net Position
Last Ten Calendar Years
(accrual basis of accounting)
Schedule 2

	Calendar Year									
	2008	2009	2010	2011	2012	2013	2014	2015	2016	2017
Expenses										
Governmental Activities:										
General Government	\$3,960,383	\$3,999,232	\$3,329,619	\$2,696,316	\$2,805,362	\$2,320,530	\$3,121,794	\$2,461,163	\$2,788,605	\$2,741,947
Public Safety	3,075,285	2,898,740	3,142,392	3,144,412	2,882,757	2,722,051	2,703,361	2,855,023	2,922,948	3,485,593
Leisure Time Activities	1,713,875	1,556,361	1,647,147	1,630,553	1,619,481	1,315,475	1,304,012	408,341	1,414,283	1,534,291
Community Development	394,290	352,675	473,420	463,301	229,910	549,843	344,907	1,364,333	424,046	444,133
Basic Utility Service	547,843	556,496	573,699	511,108	559,625	488,926	556,180	1,564,961	577,672	586,481
Transportation and Street Repair	1,733,726	1,263,033	1,226,103	1,293,436	1,481,496	1,198,416	1,321,253	571,118	1,950,312	1,799,822
Public Health and Welfare	66,179	66,801	66,983	67,258	67,294	66,913	66,911	67,414	19,133	35,706
Interest and Fiscal Charges	379,349	410,378	524,984	506,270	408,194	446,015	427,762	400,408	378,415	335,926
Total Governmental Activities Expenses	11,870,930	11,103,716	10,984,347	10,312,654	10,054,119	9,108,169	9,846,180	9,692,761	10,475,414	10,963,899
Business-Type Activities:										
Water Utility	1,609,073	1,903,423	1,470,035	1,571,141	1,639,248	1,534,134	1,609,221	1,430,532	1,781,596	1,605,309
Total Business-Type Activities Expenses	1,609,073	1,903,423	1,470,035	1,571,141	1,639,248	1,534,134	1,609,221	1,430,532	1,781,596	1,605,309
Total Primary Government Expenses	\$13,480,003	\$13,007,139	\$12,454,382	\$11,883,795	\$11,693,367	\$10,642,303	\$11,455,401	\$11,123,293	\$12,257,010	\$12,569,208
Program Revenues										
Governmental Activities:										
Charges for Services and Sales:										
General Government	\$187,311	\$178,957	\$40,579	\$192,804	\$104,429	\$101,722	\$108,346	\$74,451	\$74,551	\$193,009
Public Safety	131,359	124,778	126,369	114,541	96,751	173,297	134,091	131,147	97,295	136,547
Leisure Time Activities	786,529	742,538	729,015	764,325	733,707	717,039	810,132	820,599	827,392	892,385
Community Development	74,163	67,507	71,375	64,623	67,755	40,080	0	0	0	0
Basic Utility Service	98,267	102,005	157,429	112,418	114,827	114,827	120,843	131,365	117,993	113,374
Transportation and Street Repair	6,708	2,819	3,521	5,837	6,148	36,001	7,060	4,022	2,969	3,300
Operating Grants and Contributions	523,622	585,358	481,773	614,638	578,823	498,930	615,190	457,790	424,444	421,663
Capital Grants and Contributions	670,800	842,236	1,383,796	452,925	1,134,999	20,330	2,303	138,229	206,750	566,722
Total Governmental Activities Program Revenues	2,478,759	2,646,198	2,993,857	2,264,037	2,835,030	1,702,226	1,797,965	1,757,603	1,751,394	2,327,000
Business-Type Activities:										
Charges for Services and Sales:										
Water Utility	1,791,952	1,695,733	2,018,093	1,784,774	1,909,736	1,748,702	1,727,512	1,775,429	1,851,152	1,912,838
Operating Grants and Contributions	0	0	0	0	0	0	36,000	65,322	11,258	0
Capital Grants and Contributions	0	0	141,107	681,428	1,055,592	0	0	0	0	0
Total Business-Type Activities Program Revenues	1,791,952	1,695,733	2,159,200	2,466,202	2,965,328	1,748,702	1,763,512	1,840,751	1,862,410	1,912,838
Total Primary Government Program Revenues	\$4,270,711	\$4,341,931	\$5,153,057	\$4,730,239	\$5,800,358	\$3,450,928	\$3,561,477	\$3,598,354	\$3,613,804	\$4,239,838

City of Wyoming, Ohio
Changes in Net Position
Last Ten Calendar Years
(accrual basis of accounting)
Schedule 2 (Continued)

	Calendar Year									
	2008	2009	2010	2011	2012	2013	2014	2015	2016	2017
Net (Expense)/Revenue										
Governmental Activities	(\$9,392,171)	(\$8,457,518)	(\$7,990,490)	(\$8,048,617)	(\$7,219,089)	(\$7,405,943)	(\$8,048,215)	(\$7,935,158)	(\$8,724,020)	(\$8,636,899)
Business-Type Activities	182,879	(207,690)	689,165	895,061	1,326,080	214,568	154,291	410,219	80,814	307,529
Total Primary Government Net Expenses	(\$9,209,292)	(\$8,665,208)	(\$7,301,325)	(\$7,153,556)	(\$5,893,009)	(\$7,191,375)	(\$7,893,924)	(\$7,524,939)	(\$8,643,206)	(\$8,329,370)
General Revenues and Other Changes in Net Position										
Governmental Activities:										
Income Taxes	\$4,301,728	\$3,597,362	\$4,167,336	\$3,798,316	\$4,488,906	\$4,540,860	\$4,565,067	\$5,802,691	\$5,841,680	\$6,229,982
Property Taxes Levied for:										
General Purposes	2,611,321	2,707,196	2,722,396	2,755,848	2,511,722	2,395,889	2,403,441	2,651,572	2,656,859	2,668,658
Grants and Entitlements not Restricted	1,112,200	1,845,230	1,101,306	1,157,415	1,753,213	914,292	552,153	532,215	487,973	483,145
Investment Earnings	281,125	72,750	36,419	36,126	25,977	8,813	34,569	(14,397)	27,033	(21,706)
Other Revenues	120,456	56,784	8,642	161,227	174,360	289,596	223,791	340,148	382,075	431,531
Transfers-Internal Activities	106,136	88,436	0	0	(408,240)	0	0	0	0	0
Total Governmental Activities	8,532,966	8,367,758	8,036,099	7,908,932	8,545,938	8,149,450	7,779,021	9,312,229	9,395,620	9,791,610
Business-Type Activities:										
Investment Earnings	46,422	10,068	2,669	6,527	6,153	1,334	7,328	8,215	16,272	11,116
Transfers-Internal Activities	(106,136)	(88,436)	1,147	0	408,240	0	40,755	2,825	0	0
Total Business-Type Activities	(59,714)	(78,368)	3,816	6,527	414,393	1,334	48,083	11,040	16,272	11,116
Total Primary Government	\$8,473,252	\$8,289,390	\$8,039,915	\$7,915,459	\$8,960,331	\$8,150,784	\$7,827,104	\$9,323,269	\$9,411,892	\$9,802,726
Change in Net Position										
Governmental Activities	(\$859,205)	(\$89,760)	\$45,609	(\$139,685)	\$1,326,849	\$743,507	(\$269,194)	\$1,377,071	\$671,600	\$1,154,711
Business-Type Activities	123,165	(286,058)	692,981	901,588	1,740,473	215,902	202,374	421,259	97,086	318,645
Total Primary Government	(\$736,040)	(\$375,818)	\$738,590	\$761,903	\$3,067,322	\$959,409	(\$66,820)	\$1,798,330	\$768,686	\$1,473,356

Source: City Records

THIS PAGE INTENTIONALLY LEFT BLANK



City of Wyoming, Ohio
Fund Balances, Governmental Funds
Last Ten Calendar Years
(modified accrual basis of accounting)
Schedule 3

	Calendar Year									
	2008	2009	2010	2011 (1)	2012	2013	2014	2015	2016	2017
General Fund										
Reserved	\$245,722	\$345,592	\$318,675	\$0	\$0	\$0	\$0	\$0	\$0	\$0
Unreserved	3,098,766	2,854,509	1,902,542	0	0	0	0	0	0	0
Assigned				711,471	1,234,012	1,607,505	1,415,144	1,007,634	1,602,064	1,112,009
Unassigned				1,704,278	724,424	1,515,465	920,286	1,398,478	1,466,773	1,910,289
Total General Fund	\$3,344,488	\$3,200,101	\$2,221,217	\$2,415,749	\$1,958,436	\$3,122,970	\$2,335,430	\$2,406,112	\$3,068,837	\$3,022,298
All Other Governmental Funds										
Reserved	\$681,662	\$758,579	\$584,262	\$0	\$0	\$0	\$0	\$0	\$0	\$0
Unreserved, Reported in:										
Special Revenue Funds	320,926	416,956	445,074	0	0	0	0	0	0	0
Debt Service Funds	46	47	47	0	0	0	0	0	0	0
Capital Project Funds	734,122	4,603,703	3,617,366	0	0	0	0	0	0	0
Nonspendable				41,328	61,992	9,682	52,433	58,117	55,200	62,643
Restricted				939,876	444,970	478,046	411,103	769,283	753,171	1,170,788
Committed				2,187,414	2,586,931	2,565,822	2,534,834	2,279,541	1,707,082	1,254,335
Assigned				47	1,410	1,410	1,410	1,410	1,410	46
Unassigned				0	(90,320)	0	(68,914)	0	0	0
Total All Other Governmental Funds	\$1,736,756	\$5,779,285	\$4,646,749	\$3,168,665	\$3,004,983	\$3,054,960	\$2,930,866	\$3,108,351	\$2,516,863	\$2,487,812

Source: City Records

(1) - Prior year amounts have not been restated for the implementation of GASB Statement 54. The change in the classification of fund balance amounts in 2011 are discussed in the Notes to the Financial Statements

City of Wyoming, Ohio
Changes in Fund Balances, Governmental Funds
Last Ten Calendar Years
(modified accrual basis of accounting)
Schedule 4

	Calendar Year									
	2008	2009	2010	2011	2012	2013	2014	2015	2016	2017
Revenues										
Taxes	\$7,190,591	\$6,725,592	\$6,512,868	\$6,765,678	\$6,650,808	\$7,372,548	\$6,890,105	\$8,266,276	\$8,681,477	\$8,776,381
Fines, Licenses and Permits	136,378	132,307	103,869	118,712	93,950	112,136	112,644	96,118	101,252	205,778
Charges for Services	922,815	876,069	961,939	1,138,102	1,026,697	1,017,176	1,077,778	1,093,662	1,024,985	1,132,869
Investment Earnings	290,173	75,151	42,712	35,191	26,348	8,407	32,878	(10,085)	85,895	31,820
Intergovernmental	2,200,663	3,079,907	2,930,288	2,218,007	3,468,717	1,550,205	1,168,896	1,118,060	1,128,237	1,476,565
Special Assessments	184	709	0	0	0	0	0	0	0	0
Other Revenues	313,082	268,663	11,134	145,454	166,696	289,649	242,792	345,330	301,701	345,786
Total Revenues	\$11,053,886	\$11,158,398	\$10,562,810	\$10,421,144	\$11,433,216	\$10,350,121	\$9,525,093	\$10,909,361	\$11,323,547	\$11,969,199
Expenditures										
Current:										
General Government	\$3,806,276	\$3,054,323	\$2,629,106	\$2,545,477	\$2,712,071	\$2,203,807	\$2,983,964	\$2,815,641	\$2,546,934	\$2,506,097
Public Safety	2,777,577	2,540,028	2,735,712	2,853,292	2,642,384	2,543,340	2,506,400	2,612,898	2,571,385	2,874,406
Leisure Time Activities	1,287,370	1,346,448	1,379,819	1,394,919	1,397,640	1,148,381	1,141,457	1,209,375	1,142,765	1,266,228
Community Development	222,513	229,943	335,900	287,043	376,313	295,137	267,803	270,903	247,495	260,997
Basic Utility Service	547,843	556,496	573,699	511,108	559,625	488,926	556,180	571,118	577,672	586,481
Transportation and Street Repair	968,897	941,812	920,798	924,291	1,064,468	1,042,043	957,096	1,151,814	1,105,503	991,694
Public Health and Welfare	66,179	66,801	66,983	67,258	67,294	66,913	66,911	67,414	19,133	35,706
Capital Outlay	3,416,802	3,160,388	3,013,099	2,010,693	2,579,813	175,513	721,422	1,246,049	2,111,175	2,575,085
Debt Service										
Principal Retirement	365,908	376,061	564,788	631,501	701,923	688,689	871,546	731,560	757,690	806,693
Interest and Fiscal Charges	380,944	399,422	522,744	507,878	423,804	430,551	409,699	386,491	363,580	298,191
Bond Issuance Costs	0	0	0	0	52,250	0	0	0	0	0
Total Expenditures	\$13,840,309	\$12,671,722	\$12,742,648	\$11,733,460	\$12,577,585	\$9,083,300	\$10,482,478	\$11,063,263	\$11,443,332	\$12,201,578

City of Wyoming, Ohio
 Changes in Fund Balances, Governmental Funds
 Last Ten Calendar Years
 (modified accrual basis of accounting)
 Schedule 4 (continued)

	Calendar Year									
	2008	2009	2010	2011	2012	2013	2014	2015	2016	2017
Excess of revenues over (under) expenditures	(\$2,786,423)	(\$1,513,324)	(\$2,179,838)	(\$1,312,316)	(\$1,144,369)	\$1,266,821	(\$957,385)	(\$153,902)	(\$119,785)	(\$232,379)
Other Financing Sources (Uses)										
Proceeds from Sale of Capital Assets	\$0	\$0	\$0	\$18,466	\$10,025	\$0	\$3,000	\$19,056	\$27,739	\$28,256
Issuance of Long-Term Capital-Related Debt	0	5,324,080	67,338	0	435,633	0	0	377,329	166,200	103,750
Sale of Refunding Bonds	0	0	0	0	2,330,725	0	0	0	0	5,785,211
Payments to Refunded Bond Escrow Agent	0	0	0	0	(2,431,835)	0	0	0	0	(6,330,933)
Premium on Sale of Refunded Bonds	0	0	0	0	158,162	0	0	0	0	563,062
Transfers In	1,682,782	2,650,944	1,847,436	1,167,325	1,686,333	1,207,708	1,409,418	1,640,854	2,139,442	2,724,537
Transfers (Out)	(1,576,646)	(2,562,508)	(1,847,436)	(1,167,325)	(1,686,333)	(1,207,708)	(1,409,418)	(1,640,854)	(2,139,442)	(2,724,537)
Total Other Financing Sources (Uses)	106,136	5,412,516	67,338	18,466	502,710	0	3,000	396,385	193,939	149,346
Net Change in Fund Balances	(\$2,680,287)	\$3,899,192	(\$2,112,500)	(\$1,293,850)	(\$641,659)	\$1,266,821	(\$954,385)	\$242,483	\$74,154	(\$83,033)
Debt service as a percentage of noncapital expenditures (1)	6.6%	7.8%	10.4%	11.3%	10.0%	12.9%	13.1%	11.2%	11.5%	11.0%

Source: City Records

(1) - Noncapital expenditures is total expenditures minus capital outlay

City of Wyoming, Ohio
 Assessed Value and Estimated Actual Value of Taxable Property
 Last Ten Calendar Years
 Schedule 5

Calendar Year	Real Property Assessed Value	Tangible Personal Property Assessed Value	Public Utilities Personal Assessed Value	Total Assessed Value	Total Estimated Actual Value	Total Direct Rate
2008 (1)	\$301,350,170	\$1,040,710	\$3,027,740	\$305,418,620	\$872,624,629	10.00
2009 (1)	308,159,320	206,440	3,403,560	311,769,320	890,769,486	10.00
2010 (1)	307,081,700	111,900	3,313,740	310,507,340	887,163,829	10.00
2011 (1)	274,291,220	0	3,605,980	277,897,200	793,992,000	10.00
2012 (1)	273,698,300	0	3,736,410	277,434,710	792,670,600	10.00
2013 (1)	273,670,970	0	4,016,360	277,687,330	793,392,371	10.00
2014 (1)	300,596,430	0	4,315,360	304,911,790	871,176,543	10.00
2015 (1)	301,278,350	0	4,466,990	305,745,340	873,558,114	10.00
2016 (1)	302,297,210	0	4,511,410	306,808,620	876,596,057	10.00
2017 (1)	308,496,840	0	4,820,860	313,317,700	895,193,429	10.00

Source: County Auditor

(1) - Both Tangible Personal Property and Public Utility Personal Property are expected to further decrease over the next three years due to a change made by the State of Ohio in its tax structure. Currently the State is reimbursing the City for these lost revenues and plans to reimburse 100% of these losses through 2010 at which time the reimbursement is expected to be reduced until 2017.

Note: The assessed value of real property (including public utility real property) is 35 percent of estimated true value. Personal property tax is assessed on all tangible personal property used in business in Ohio. The assessed value of public utility personal property ranges from 25 percent of true value for railroad property to 88 percent for electric transmission and distribution property. General business tangible personal property is assessed at 25 percent for everything except inventories, which are assessed at 23 percent. Property is assessed annually.

The tangible personal property values associated with each year are the values that, when multiplied by the applicable rates, generated the property tax revenue to be received in that year. For real property, the amounts generated by multiplying the assessed values by the applicable rates would be reduced by the 10 percent, 2 1/2 percent and homestead exemptions before being billed.

City of Wyoming, Ohio
 Direct and Overlapping Property Tax Rates
 Last Ten Calendar Years
 Schedule 6

Calendar Year	Direct Rate		Overlapping Rates									
	General Fund (1)	Total Direct Rate	Wyoming City School District	Finneytown Local School District	Park District	Library District	Cincinnati City School District	Winton Woods City School District	Joint Vocational	Hamilton County		
2008	10.00	10.00	87.87	86.67	1.03	1.00	59.67	78.03	2.70	20.56		
2009	10.00	10.00	87.87	86.92	1.03	1.00	67.95	78.03	2.70	20.63		
2010	10.00	10.00	87.84	86.96	1.03	1.00	67.87	85.93	2.70	20.48		
2011	10.00	10.00	87.84	94.90	1.03	1.00	68.54	86.03	2.70	19.45		
2012	10.00	10.00	88.58	94.90	1.03	1.00	70.76	87.32	2.70	19.03		
2013	10.00	10.00	93.37	96.88	1.03	1.00	71.34	87.41	2.70	19.03		
2014	10.00	10.00	93.37	96.88	1.03	1.00	71.49	87.41	2.70	19.03		
2015	10.00	10.00	93.37	96.88	1.03	1.00	70.65	87.41	2.70	18.85		
2016	10.00	10.00	93.28	96.93	1.03	1.00	70.15	87.81	2.70	18.85		
2017	10.00	10.00	102.73	97.78	1.03	1.00	77.23	94.76	2.70	19.16		

2017 Tax Rates

City of Wyoming	2017 Tax Rates		Total
	Inside 10 Mill	Outside 10 Mill	
City	10.00	0.00	10.00
Wyoming School District	3.85	98.88	102.73
Library District	0.00	1.00	1.00
Hamilton County	2.26	16.90	19.16
JVS District	0.00	2.70	2.70
Park District	0.03	1.00	1.03
Total	16.14	120.48	136.62

Source: County Auditor

(1) - The General Fund is the only component of the direct rate.

Note: Rates may only be raised by obtaining the approval of a majority of the voters at a public election.

City of Wyoming, Ohio
Principal Property Tax Payers
Current Year and Nine Years ago
Schedule 7

Taxpayer	2017	
	Assessed Value	Percentage of Total Assessed Value
Duke Energy Ohio Inc	\$4,786,940	1.53%
Heritage Apartments Co.	954,680	0.30%
Landers, Thomas & B. Kay	493,450	0.16%
Limekiln LLC	440,130	0.14%
Pepper, John E. Jr. & Frances	429,040	0.14%
Hammersmith, Rob & Alicia	414,400	0.13%
Rutter, Michael & Meilan	413,000	0.13%
Geller, James & Pam	409,580	0.13%
The Wyoming Golf Club	407,850	0.13%
Cohen Dan W TR & Judith F TR	395,550	0.13%
Total Principal Property Tax Payers	\$9,144,620	2.92%
Total Assessed Value	\$313,317,700	

Taxpayer	2008	
	Assessed Value	Percentage of Total Assessed Value
Duke Energy	\$3,010,150	0.99%
Heritage Apartments Company	936,040	0.31%
Coral Wyoming LLC	756,470	0.25%
Wilson, Kathleen Y.	491,540	0.16%
Landers, Thomas & B. Kay	455,010	0.15%
Pepper, John E Jr	438,030	0.14%
Wyoming Golf Club	425,350	0.14%
Warm, William H.	413,010	0.14%
Jackson, Phyllis A.	400,650	0.13%
Loper, David K	393,760	0.13%
Total Principal Property Tax Payers	\$7,720,010	2.54%
Total Assessed Value	\$305,418,620	

Source: County Auditor

City of Wyoming, Ohio
Property Tax Levies and Collections
Last Ten Calendar Years
Schedule 8

Calendar Year	Taxes Levied for the Calendar Year (1)	Collected within the Calendar Year of the Levy		Unpaid Collections	Total Collections (3)	
		Net Collections (2)	Percentage of Levy		Amount	Percentage of Levy
2008	\$3,148,311	\$3,050,083	96.88%	\$98,062	\$3,148,145	99.99%
2009	3,210,616	3,117,825	97.11%	87,488	3,205,313	99.83%
2010	3,212,331	3,106,994	96.72%	86,007	3,193,001	99.40%
2011	3,194,230	3,122,707	97.76%	70,519	3,193,226	99.97%
2012	2,842,039	2,767,864	97.39%	61,786	2,829,650	99.56%
2013	2,831,226	2,771,026	97.87%	50,696	2,821,722	99.66%
2014	2,828,986	2,775,037	98.09%	47,168	2,822,205	99.76%
2015	3,102,964	3,041,207	98.01%	57,595	3,098,802	99.87%
2016	3,117,731	3,052,983	97.92%	59,943	3,112,926	99.85%
2017	3,131,623	3,070,945	98.06%	56,864	3,127,809	99.88%

Real Estate and Public Utility

Calendar Year	Current Taxes Billed for the Calendar Year	Collected within the Calendar Year of the Levy		Delinquent Taxes Billed for the Calendar Year	Delinquent Tax Collections	Percentage Collected
		Current Tax Collections	Percentage Collected			
2013	\$2,774,420	\$2,734,693	98.57%	\$56,805	\$44,508	78.35%
2014	2,777,265	2,740,821	98.69%	51,721	41,474	80.19%
2015	3,051,751	3,001,267	98.35%	51,211	44,820	87.52%
2016	3,058,200	3,012,854	98.52%	59,530	44,933	75.48%
2017	3,068,762	3,025,215	98.58%	61,557	48,907	79.45%

Special Assessments

Calendar Year	Current Assessments Billed for the Calendar Year	Collected within the Calendar Year of the Levy		Delinquent Assessments Billed for the Calendar Year	Delinquent Collections	Percentage Collected
		Current Collections	Percentage Collected			
2013	\$5,244	\$3,419	65.20%	\$1,196	\$162	13.55%
2014	4,043	3,703	91.59%	2,890	1,822	63.04%
2015	3,875	3,822	98.63%	1,293	0	0.00%
2016	2,806	0	0.00%	1,510	472	31.26%
2017	636	636	100.00%	667	0	0.00%

Source: County Auditor

(1) - Includes delinquent levy

(2) - Includes current and delinquent collections minus refunds

(3) - Includes net collections plus unpaid collections

City of Wyoming, Ohio
Income Tax by Payer Type and Income Tax Rate
Last Ten Calendar Years
(cash basis of accounting)
Schedule 9

Calendar Year	Individual		Total Individual	Business	Total	Income Tax Rate
	Withholding	Non-Withholding				
2008	\$744,051	\$3,742,891	\$4,486,942	\$60,733	\$4,547,675	0.80%
2009	744,349	3,218,838	3,963,187	26,211	3,989,398	0.80%
2010	783,249	3,008,629	3,791,878	19,740	3,811,618	0.80%
2011	857,841	3,100,611	3,958,452	39,416	3,997,868	0.80%
2012	851,150	3,241,982	4,093,132	34,506	4,127,638	0.80%
2013	894,440	4,054,458	4,948,898	48,440	4,997,338	0.80%
2014	968,060	3,474,617	4,442,677	39,969	4,482,647	0.80%
2015	1,203,331	4,331,853	5,535,184	36,402	5,571,586	1.00%
2016	1,452,289	4,696,847	6,149,136	69,239	6,218,375	1.00%
2017	1,414,443	4,625,388	6,039,831	66,671	6,106,502	1.00%

Source: City Records

Note: Increases in the income tax rate above 1% requires voter approval.

City of Wyoming, Ohio
Principal Income Taxpayers
Current Year
(cash basis of accounting)
Schedule 10

Note: Due to legal restrictions and confidentiality requirements, the City cannot disclose the amount of withholdings by taxpayer.

Source: City Records

City of Wyoming, Ohio
Ratios of Outstanding Debt by Type
Last Ten Calendar Years
Schedule 11

Fiscal Year	Governmental Activities		Business-Type Activities		Total Primary Government	Percentage of Personal Income	Per Capita
	General Obligation Bonds and Notes	Notes Payable	General Obligation Bonds and Notes	Notes Payable			
2008	\$8,052,570	\$1,132,000	\$5,820,337	\$368,000	\$15,372,907	0.04%	\$1,861
2009	13,004,321	0	6,659,127	0	19,663,448	0.06%	2,380
2010	12,510,764	0	6,236,006	0	18,746,770	0.05%	2,224
2011	11,883,323	0	5,802,284	0	17,685,607	0.05%	2,098
2012	12,071,174	0	5,526,410	0	17,027,974	0.04%	2,020
2013	11,367,226	0	5,054,798	0	16,422,024	0.04%	1,949
2014	10,480,421	0	4,708,621	0	15,189,042	0.04%	1,802
2015	9,963,232	0	4,218,297	0	14,181,529	0.03%	1,683
2016	9,361,493	0	3,720,420	0	13,081,913	0.03%	1,552
2017	9,032,922	0	3,211,333	0	12,244,255	N/A	1,453

Source: City Records

N/A - Information not available

Notes: Details regarding the city's outstanding debt can be found in the notes to the basic financial statements

City of Wyoming, Ohio
Ratios of General Bonded Debt Outstanding
Last Ten Calendar Years
Schedule 12

Fiscal Year	General Bonded Debt Outstanding General Obligation Bonds	Percentage of Actual Taxable Value of Property	Per Capita
2008	\$13,872,907	1.68%	\$1,679
2009	19,663,448	1.59%	2,380
2010	18,746,770	2.21%	2,224
2011	17,685,607	2.11%	2,098
2012	17,027,974	2.23%	2,020
2013	16,422,024	2.15%	1,949
2014	15,189,042	1.74%	1,802
2015	14,181,529	1.62%	1,683
2016	13,081,913	1.49%	1,552
2017	12,244,255	1.37%	1,453

Source: City Records

Notes: Details regarding the city's outstanding debt can be found in the notes to the basic financial statements

City of Wyoming, Ohio
 Direct and Overlapping Governmental Activities Debt
 As of December 31, 2017
 Schedule 13

Governmental Unit	Net Debt Outstanding	Estimated Percentage Applicable (1)	Amount Applicable to City of Wyoming
Hamilton County	\$133,845,000	1.66%	\$2,221,827
Springfield Township	7,210,000	0.08%	5,768
Cincinnati City School District	306,808,569	0.00%	0
Winton Woods City School District	59,400,000	1.27%	754,380
Wyoming City School District	35,072,000	100.00%	35,072,000
Finneytown Local School District	4,385,000	0.13%	5,701
Great Oaks Career Center Joint Vocational School District	6,070,000	1.63%	98,941
Subtotal Overlapping Debt	552,790,569		38,158,617
City of Wyoming - Direct Debt	9,032,922	100.00%	9,032,922
Total Direct and Overlapping Debt	\$561,823,491		\$47,191,539

Source: Ohio Municipal Advisory Council

(1) - Percentages were determined by dividing the assessed valuation of the overlapping government located within the boundaries of the City by the total assessed valuation of the government.

City of Wyoming, Ohio
 Legal Debt Margin Information
 Last Ten Calendar Years
 Schedule 14

Legal Debt Margin Calculation for Calendar Year 2017

Assessed Value	\$313,317,700	\$313,317,700
Statutory Legal Debt Limitation (1)	10.5%	5.5%
Total Debt Limitation	32,898,359	17,232,474
Debt Applicable to Limit:		
Gross Indebtedness	9,032,922	9,032,922
Less: Debt Outside Limitations	9,032,922	9,032,922
Less: Bond Retirement Fund Balance	0	0
Total Net Debt Applicable to Limit	0	0
Legal Debt Margin	\$32,898,359	\$17,232,474

	Calendar Year									
	2008	2009	2010	2011	2012	2013	2014	2015	2016	2017
Total Debt Limit (1)										
Debt Limit (10.5%)	\$32,068,955	\$32,735,779	\$32,603,271	\$29,179,206	\$29,130,645	\$29,157,170	\$32,015,738	\$32,103,261	\$32,214,905	\$32,898,359
Total Net Debt Applicable to Limit	0	0	0	0	0	0	0	0	0	0
Legal Debt Margin	\$32,068,955	\$32,735,779	\$32,603,271	\$29,179,206	\$29,130,645	\$29,157,170	\$32,015,738	\$32,103,261	\$32,214,905	\$32,898,359
Total Net Debt Applicable to the Limit as a Percentage of Debt Limit	0.0%	0.0%	0.0%	0.0%	0.0%	0.0%	0.0%	0.0%	0.0%	0.0%

	Calendar Year									
	2008	2009	2010	2011	2012	2013	2014	2015	2016	2016
Total Unvoted Debt Limit (1)										
Debt Limit (5.5%)	\$16,798,024	\$17,147,313	\$17,077,904	\$15,284,346	\$15,258,909	\$15,272,803	\$16,770,148	\$16,815,994	\$16,874,474	\$17,232,474
Total Net Debt Applicable to Limit	0	0	0	0	0	0	0	0	0	0
Legal Debt Margin	\$16,798,024	\$17,147,313	\$17,077,904	\$15,284,346	\$15,258,909	\$15,272,803	\$16,770,148	\$16,815,994	\$16,874,474	\$17,232,474
Total Net Debt Applicable to the Limit as a Percentage of Debt Limit	0.0%	0.0%	0.0%	0.0%	0.0%	0.0%	0.0%	0.0%	0.0%	0.0%

Source: City Records

(1) - Direct debt limitation based upon Section 133, the Uniform Bond Act of the Ohio Revised Code. Total debt limit should not exceed 10.5% of net assessed property value.
 Total unvoted debt limit should not exceed 5.5% of net assessed property value.

City of Wyoming, Ohio
Demographic and Economic Statistics
Last Ten Calendar Years
Schedule 15

Calendar Year	Population (1)	Personal Income (Thousands of Dollars) (2)	Per Capita Personal Income (3)	Unemployment Rate (4)
2008	8,261	\$37,244,363	\$43,637	5.60%
2009	8,261	35,228,404	43,918	8.90%
2010	8,428	35,888,024	44,751	8.50%
2011	8,428	37,522,065	46,881	7.70%
2012	8,428	39,631,501	49,413	6.30%
2013	8,428	40,415,100	50,235	6.10%
2014	8,428	41,322,507	51,229	4.00%
2015	8,428	42,060,595	52,081	4.50%
2016	8,428	43,251,503	53,456	4.70%
2017	8,428	N/A	N/A	4.40%

- Sources:
- (1) - Population estimates provided by U.S. Census Bureau (2000 Census for years 2003 - 2009 and 2010 Census for years 2010 - 2012)
 - (2) - Personal Income information provided by Bureau of Economic Analysis: Regional Economic Accounts
 - (3) - Per Capita Personal Income information provided by Bureau of Economic Analysis: Regional Economic Accounts
 - (4) - Ohio Bureau of Employment Services

N/A - Information not available

City of Wyoming, Ohio
Major Employers (1)
Current Fiscal Year and Fiscal Period Seven Years Ago (2)
Schedule 16

2017				
Major Employers (3)	Type	Number of Employees	Employer's Percentage of Total Employment	
American Financial Group Inc	Ins	(4)	(5)	
Cincinnati Children's Hospital	Serv	(4)	(5)	
Fifth Third Bancorp	Fin	(4)	(5)	
Ford Motor Co	Mfg	(4)	(5)	
General Electric Co	Mfg	(4)	(5)	
Johnson & Johnson/Ethicon	Mfg	(4)	(5)	
Kroger Co	Trade	(4)	(5)	
Macy's Inc	Trade	(4)	(5)	
Mercy Health Partners	Serv	(4)	(5)	
Procter & Gamble Co	Mfg	(4)	(5)	
TriHealth Inc	Serv	(4)	(5)	
University of Cincinnati	Govt	(4)	(5)	

2010				
Major Employers (3)	Type	Number of Employees	Employer's Percentage of Total Population	
American Financial Group Inc	Ins	(4)	(5)	
Chiquita Brands International Inc	Trade	(4)	(5)	
Convergys Corp	Serv	(4)	(5)	
Duke Energy Corp	Utility	(4)	(5)	
Fifth Third Bancorp	Fin	(4)	(5)	
Ford Motor Co	Mfg	(4)	(5)	
General Electric Co	Mfg	(4)	(5)	
Health Alliance of Greater Cincinnati	Serv	(4)	(5)	
Johnson & Johnson/Ethicon	Mfg	(4)	(5)	
Kroger Co	Trade	(4)	(5)	
Macy's Inc	Trade	(4)	(5)	
Mercy Health Partners	Serv	(4)	(5)	
Procter & Gamble Co	Mfg	(4)	(5)	
TriHealth Inc	Serv	(4)	(5)	
University of Cincinnati	Govt	(4)	(5)	

Source: Ohio Department of Development

(1) - For all of Hamilton County

(2) - Only current fiscal year and fiscal period seven years ago information available. Information for fiscal period nine years ago not available.

(3) - Includes at minimum the ten largest employers for the county. In alphabetical order only.

(4) - The number of employees of each listed major employer was not available.

(5) - The employer's percentage of total employment for each major employer was not available.

City of Wyoming, Ohio
 Full-Time Equivalent City Government Employees by Function/Program
 Last Ten Calendar Years
 Schedule 17

Function/Program	Full-Time Equivalent Employees as of December 31									
	2008	2009	2010	2011	2012	2013	2014	2015	2016	2017
General Government										
City Administration	4	5	3	2	3	3	3	3	2	2
City Council	4	4	4	4	4	4	4	4	4	4
Finance	3	3	3	5	4	4	4	4	4	4
Public Safety										
Police										
Officers	18	19	19	18	17	17	17	17	48	18
Non-Sworn	6	3	3	3	3	2	2	2	2	2
Fire/EMS	36	36	36	36	36	36	36	36	30	30
Leisure Time Activities										
Parks and recreation	20	21	21	21	20	20	20	20	20	20
Community Development										
Planning and Zoning/Building Inspection	2	2	1	2	2	2	2	2	2	2
Basic Utility Service										
Water	6	6	6	6	6	5	5	5	5	5
Transportation and Street Repair	13	12	12	12	12	12	12	12	12	13
Total	112	111	108	109	107	105	105	105	129	100

Source: Various City Departments

City of Wyoming, Ohio
 Operating Indicators by Function/Program
 Last Ten Calendar Years
 Schedule 18

Function/Program	Calendar Year									
	2008	2009	2010	2011	2012	2013	2014	2015	2016	2017
General government										
Building permits issued	286	258	264	238	250	220	259	219	226	262
Police										
Physical arrests	171	147	85	98	70	71	57	42	40	117
Parking violations	97	56	40	34	25	80	62	25	38	31
Traffic violations	1,824	1,638	1,136	1,338	711	953	539	491	686	1,727
Fire										
Emergency responses	1,413	1,207	1,186	1,157	1,174	1,128	1,108	612	531	600
Fire responses	587	394	347	421	412	407	382	306	246	324
Other public works										
Street resurfacing and/or reconstruction (Mile)	2.20	2.17	0.66	0.35	0.52	0.30	0.30	0.89	0.00	0.70
Parks and recreation										
Recreation Center Memberships	656	556	550	600	546	679	604	2,181	2,094	3,042
Aquatic Center Memberships	480	440	395	375	388	400	451	1,472	1,667	1,812
Classes/Activities Offered	136	296	351	70	84	148	192	9,093	1,197	1,697
Water										
New connections	5	3	5	0	4	10	0	8	1	3
Water main breaks	27	28	27	19	7	12	26	25	34	20
Average daily consumption (millions of gallons)	0.9	0.7	0.7	0.7	0.9	0.8	0.7	0.7	0.7	0.7
Peak daily consumption (millions of gallons)	1.824	1.210	1.390	1.210	1.970	1.270	1.080	1.025	1.349	1.164

Source: Various City Departments

City of Wyoming, Ohio
 Capital Asset Statistics by Function/Program
 Last Ten Calendar Years
 Schedule 19

Function/Program	Calendar Year									
	2008	2009	2010	2011	2012	2013	2014	2015	2016	2017
General Government										
Number of Facilities	3	3	3	3	3	3	3	3	3	3
Square Footage of Buildings	22,753	22,753	22,753	22,753	22,753	22,753	22,753	22,753	22,753	22,753
Police										
Stations	1	1	1	1	1	1	1	1	1	1
Square Footage of Buildings	11,252	11,252	11,252	11,252	11,252	11,252	11,252	11,252	11,252	11,252
Fire										
Stations	1	1	1	1	1	1	1	1	1	1
Square Footage of Buildings	11,252	11,252	11,252	11,252	11,252	11,252	11,252	11,252	11,252	11,252
Public Works										
Area of City (square miles)	2.8	2.8	2.8	2.8	2.8	2.8	2.8	2.8	2.8	2.8
Streets (miles)	36	36	36	36	36	36	36	36	36	36
Parks and Recreation										
Number of Parks	10	10	10	10	10	10	10	10	10	10
Acreage	46.46	46.46	46.46	4.46	4.46	4.46	4.46	4.46	4	4
Playgrounds	7	7	7	7	7	7	7	7	7	7
Number of Facilities	2	2	2	2	2	2	2	2	2	2
Square Footage of Buildings	27,140	27,140	27,140	27,140	27,140	27,140	27,140	27,140	27,140	27,140
Municipal Water Department										
Storage Capacity (millions of gallons)	1.4	1.4	1.4	1.4	1.4	1.4	1.4	1.4	1	1
Water Mains (miles)	42	42	42	42	42	42	42	42	42	42
Storm Sewers (miles)	16	16	16	16	16	16	16	16	16	16
Fire hydrants	368	369	370	370	370	370	370	370	370	370

Source: Various City Departments



Dave Yost • Auditor of State

CITY OF WYOMING

HAMILTON COUNTY

CLERK'S CERTIFICATION

This is a true and correct copy of the report which is required to be filed in the Office of the Auditor of State pursuant to Section 117.26, Revised Code, and which is filed in Columbus, Ohio.

Susan Babbitt

CLERK OF THE BUREAU

**CERTIFIED
JULY 3, 2018**